

EXMOOR NEWS

Bringing community news across southern Exmoor since 1985

FREE

Mar/Apr 2018



Bampton
Bridgetown
Brompton Regis
Brushford
Bury
Cutcombe

Dulverton
East Anstey
Exebridge
Exford
Exton
Hawkridge
Luxborough

Molland
Morebath
Oakford
Simonsbath
Skilgate
Upton
West Anstey

Wheddon Cross
Winsford
Withel Florey
Withypool
Wiveliscombe





TONGDAM
Thai Restaurant

Not just an evening venue, lunch offers an East West fusion menu in addition to our full A la Carte

26 High Street | Dulverton | Somerset | TA22 9DJ
01398 323397 for reservations
www.tongdam.com



RENOVATION
RESTORATION
PRESERVATION

Maintaining
the Building
Heritage
of Exmoor

All types
of work
undertaken



EXMOOR **BUILDERS**

T 01398 324 669 M 07831 252 276

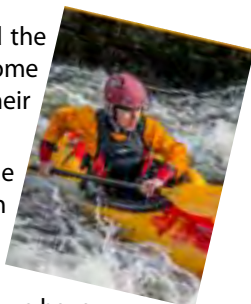
e info@exmoorbuilders.co.uk w www.exmoorbuilders.co.uk

EXMOOR NEWS

COVERING SOUTHERN EXMOOR

With spring springing, we start to think of getting out and about and the cover photo speaks a thousand words. In this issue Alan Jones has come up trumps again for our cover image. Thank you to all who send in their photos for our consideration.

Getting out and about? Check out the article on page 26 about the Exmoor Run, look online for more information, search for "Exmoor Run 2018". Talking of out and about, don't forget to send us information about your events and things to do.



WIN!! The Anchor Inn at Exebridge has kindly donated a voucher which we have put inside one of the copies of the Exmoor News. If you are the lucky winner do let us know!!

At Exmoor News, we appreciate the very kind people who deliver our magazine or take copies in their shops etc., we are extremely grateful and send our thanks to you all. And please do let our advertisers know you found them in our magazine as it means we can keep providing it free to you.

Best wishes, Ceri Keene and Claire Savill

E: exmoornews@gmail.com T: 07497 914441 W: www.exmoornews.co.uk

Post: The Old Stores, Brushford, Dulverton, Somerset, TA22 9AH

We take our responsibility to maintain high editorial standards seriously. Should an error occur please do not hesitate to contact us.

The deadline for the May/June issue of the Exmoor News is

Thursday 5th April 2018

Printed by Brightsea, Exeter



Cover image: © Alan Jones alan@alanjonesimages.com

If you would like to see your photo on the cover, send us a low resolution copy for our library. If used we will ask for a high resolution version and you too could be in print.



EXMOOR NEWS MAGAZINE ADVERT SIZES – Prices may be subject to change

A5 whole page (123w x 188h mm)	Mono @ £68 per issue	Colour @ £91 per issue
A5 half-page (123w x 92h mm)	Mono @ £34 per issue	Colour @ £46 per issue
A5 portrait quarter page (60w x 92h mm)	Mono @ £17 per issue	Colour @ £23 per issue
A5 landscape quarter page (123w x 43h mm)	Mono @ £17 per issue	Colour @ £23 per issue

Whilst every effort is made to ensure the accuracy of the information in this magazine, no liability can be accepted by the editors and publishers for any loss, damage or injury caused by errors in, or omissions from, the information given. Please also note that in the publication of trade adverts, the editors do not guarantee the quality of services provided by any of these advertisers. The editors reserve the right to decline to publish any item and to amend or shorten material.



Plastering
Stonework
Extensions
Groundworks

Renovations
New Builds
Lime Plastering
Restoration

All building works undertaken

t: 01398 323 745 m: 07833 376 737 www.lcbuildingcontractors.co.uk

Insurance policies that deliver peace of mind.

Providing fantastic insurance cover for your home, motor and business.

Local personal service with qualified and highly experienced advisers. Competitive premiums, with a wide range of insurers, schemes, facilities and claims support.

Contact us for a friendly, no-obligation chat

01884 256412

tiverton@bhsinsurance.co.uk

BH AND S Insurance Services Ltd
Gotham Chambers, Phoenix Lane,
Tiverton EX16 6LR

BH&S Insurance Services Ltd is authorised & regulated by the Financial Conduct Authority reference number 301273.



John W Morgan Garden Services

**Wooden Gates for Driveway,
Farm, Garden and Garage.
Fencing ■ Decking
Pergolas ■ Arches
Trees and Hedges
cut and pruned**

**West Anstey 01398 341972
Mobile: 07768 325432
www.johnmorgan.co.uk**



THE UTILITY WAREHOUSE



Contact your personal representative

01398 322000 and ask for Bill Wilson re Utilities

We are all being advised to switch our supplier for Energy and Telephony

What if you could reduce your outgoings by joining a discount club

Get Better service - rated No 1 in Which

Get free LED light bulbs guaranteed for life saving around 15% per year on Electricity

One bill for simplicity

Cashback on your regular spending

**MOOR
MOVIES
In Winsford
2018**

**Tuesday 6th March
THE PARTY (15)**

A group of close friends celebrate a political promotion, but once the guests arrive not everything goes down as smoothly as the red wine! A dark comedy starring Kristen Scott Thomas and Timothy Spall.

**Tuesday 27th March
BREATHE (12A)**

Inspiring true life love story of a couple who refuse to give up when he suffers from Polio. A heart warming old fashioned tale of triumph over adversity.

**Tuesday 17th April
MURDER ON THE ORIENT EXPRESS
(2017) (12A)**

Stylish and suspenseful Agatha Christie mystery set on a snow stranded train with Hercule Poirot on board to help solve the puzzle. An all star cast!

Winsford Village Hall 7.30 p.m.

Fun Quiz and Carvery
at The Sportsmans Inn
Sandyway, South Molton EX36 3LU

Friday 16th March 2018
7pm for 7.30pm

£11 per ticket includes carvery
Bumper Raffle

Teams of six or just come along to make up a team on the night!
Booking Essential!

In aid of
The Exmoor Pony Centre
Registered charity no. 1174731

A fun quiz, fabulous atmosphere, great food—all for a local charity!

Call us to book your place:
Contact the Exmoor Pony Centre on 01398 323093 or Sheila on 01598740281

**Jeff
Pegrum**

**Stockham Farm
Dulverton**

07976 951860
pegrum.jeff@gmail.com

- 35 years' experience in all agricultural, equestrian and domestic landscaping
- Steel frame buildings
- Groundworks, drainage and concreting
- Internal and external stabling
- Sand schools
- Cross country jumps/fences built
- All types of fencing
- Patios and garden projects

For a friendly, free quotation, contact Jeff.

Joshua Waygood Historic Building Conservation

Providing traditional lime restoration and repairs to historic buildings throughout Somerset & Devon

Lime plastering, lime rendering & lime pointing, lime washing, traditional stonework, stone repairs cob wall repairs

07795 967292

josh_waygood@hotmail.co.uk

WEST ANSTEY VILLAGE HALL ENTERTAINMENT

Tuesday, 13th March 7.30 pm Film: 'The Big Sick' (15)

An American romantic comedy film set in Chicago starring Zoe Kazan, Kumail Nanjiani & Holly Hunter. Loosely based on Kumail's real life story, and written by him and his wife, we meet Pakistan-born comedian Kumail the day his love affair with Emily begins. Their cultures clash, she falls ill and Kumail must navigate the crisis with her parents.

"Sparkling & heartfelt". "Easily the best Rom-Com of the Decade"

Tickets: £3.50 on the door Light Refreshments available in interval

20th May: Live Theatre: Jamie Wood in "I am a Tree"

Above events sponsored by Anstey Arts and Beaford Arts

Enquiries to 01398 341 615



WOODCOTT

Building Services & Property Maintenance

All house and garden work undertaken

Tel: 01398 322981 Mobile: 07960 944964

Email: woodcottbuildingservices@gmail.com

Contact Martin for a quotation Smaller jobs always welcome



The Wildlife Trusts' blueprint for new nature-friendly homes highlights the myriad of social, environmental and economic benefits of this approach:

- Benefits for wildlife – better protection for wildlife sites, more space for wildlife, improved connectivity and buildings that are more wildlife-friendly
- Benefits for residents – daily contact with nature, improved health, protection against climate extremes, safer transport routes, good sense of community
- Benefits for the economy and wider society – cost-effective environmental protection, employment, space to grow local food, healthier and happier communities putting less pressure on health and social services
- Benefits for developers – satisfied customers, market value, enhanced

brand, improved recruitment, improved environmental ranking

Every year Wildlife Trusts work to influence local authority planners and respond to thousands of planning applications to benefit wildlife and people alike. We also work in partnership with developers to influence the landscape design in and around new developments such as at Cambourne in Cambridgeshire and Woodberry Wetlands in London. For more information about Somerset Wildlife Trusts Taunton Garden town work (funded by players of the People's Postcode Lottery) please visit this web page for more information: http://www.somersetwildlife.org/Garden_town



44 High Street
Dulverton
Somerset
TA22 9DW


Phil and Seonee Brown
brownsjewellery@gmail.com
01398 322933

BROWNS

of Dulverton

Tuesday - Saturday
9:30 - 5:00

www.brownsjewellery.co.uk

 Browns Jewellery

- Jewellery
- Scarves
- Watches
- Home Accessories
- Garden Stoneware
- Plants and Herbs
- Cards and Gifts
- Watch Battery and Strap Replacement



Dulverton Heritage Centre

Monday 26th March Dulverton Heritage Centre and Model Railway opens for the season.

A brand new and exciting exhibition on some of Exmoor's most special butterflies, focusing on Heath Fritillary and High Brown Fritillary, two of our rarest butterflies. Please see <http://www.dulvertonheritagecentre.org.uk/> for latest opening times.

Monday March 26th – Saturday 31st - Dulverton Art Group - Exhibition by 'stand-alone' artists to show and sell their work. Work includes paintings across all mediums, crafts including knits, soft furnishings, cushions, throws and pottery.

Easter Book Fair Weekend Friday 30th March – Monday 2nd April Various days/times – keep an eye out for posters nearer the day! A traditional book sale at Dulverton Heritage Centre (weather permitting). Why not bring along your unwanted books for recycling?

Sunday April 1st – Saturday April 7th – Exhibition - Paintings by Sarah Easter Collins and Owen Ward

Wednesday 4th April 3pm Town Tour Why not join us on a guided walk exploring the history of Dulverton. Discover some secret places and hear tales of old from local guides. No need to book. £3.00 per person. Meet at Dulverton Heritage Centre.

Tuesday 17th April 3 pm Town Tour Why not join us on a guided walk exploring the history of Dulverton. Discover some secret places and hear tales of old from local guides. No need to book. £3.00 per person. Meet at Dulverton Heritage Centre.

<http://www.dulvertonheritagecentre.org.uk/>

YOGA
BREATHWORK
MEDITATION



with VANESSA

WINSFORD VILLAGE HALL
Fridays 6-7.30pm - Restorative Yoga
Saturdays 10-11.30am - Morning Yoga
All welcome £9 per class.
Drop-in or contact Vanessa
m. 07525 725183
Email: vanessa@thehodgecentre.com
Check the website for dates and more information about Vanessa
WWW.THEHODGECENTRE.COM



MOORWINE
'Your Local Wine Wholesaler'

01398 400432
info@moorwine.co.uk



www.moorwine.co.uk

~~~~~

**FREE LOCAL DELIVERY**





# Dulverton Town Hall

Friday March 9th

**GOODBYE CHRISTOPHER ROBIN** (Cert PG)  
 Director: Simon Curtis 107 mins

After leaving London for the English countryside, writer A.A. Milne starts to spin fanciful yarns about his son's growing collection of stuffed animals. These stories form the basis for 'Winnie-the-Pooh' and 'The House at Pooh Corner, published in 1926 and 1928. Milne and his family soon become swept up in the instant success of the books, while the enchanting tales bring hope and comfort to the rest of postwar England. But sadness and anger prevail in this story reminding us of current concerns on the caustic effect of celebrity.

Friday March 23rd

**PADDINGTON 2** (Cert PG)

Director: Paul King 104 mins

A delightful and superior sequel that will charm audiences of all ages with its wit and originality. Settled in with the Brown family, Paddington is a popular member of the community who spreads joy and marmalade wherever he goes. He spots a pop-up book in an antique shop, the perfect present for his beloved aunt's 100th birthday. When a thief steals the prized book, Paddington embarks

on an epic quest to unmask the culprit before Aunt Lucy's big celebration. Hugh Grant steals the show.

Friday April 13th

**BREATHE** (Cert 12A)

Director: Andy Serkis 118 mins

After contracting polio at the age of 28, Robin Cavendish is confined to a bed and given only months to live. With help from his wife Diana and her twin brothers, and the groundbreaking ideas of inventor Teddy Hall, Cavendish emerges from the hospital ward and devotes the rest of his life to helping fellow patients and the disabled. A heartwarming approach to an inspiring true love story.

Friday April 27th

**FILM STARS DON'T DIE IN LIVERPOOL**

(Cert 15)

Director: Paul McGuigan 105 mins

Hollywood actress Gloria Grahame( Annette Bening) finds romance and happiness with a younger man, but her life changes forever when she is diagnosed with breast cancer in the 1970s. A film of touching intensity, with pathos and humour.

Tickets –Dulverton Films members £3, non-members £4.50, students, accompanied by an adult, £2.50. (Tickets may be available on the door - £4). Book in advance at Dulverton Post Office (Tel: 01398 323474) or email janaross2003@yahoo.co.uk. Bar open from 7pm.

|                                                                                                                                                                                  |                                   |  |
|----------------------------------------------------------------------------------------------------------------------------------------------------------------------------------|-----------------------------------|--|
| <b>MOREBATH VILLAGE HALL</b>                                                                                                                                                     |                                   |  |
| Registered Charity No. 207013 <b>Events 2018</b>                                                                                                                                 |                                   |  |
| Fun Quiz Night - come and enjoy the fun ! Entrance £4 includes table snacks. BYO Bottle. Contact 331666 for info.                                                                | Friday<br>9 March 7.30pm          |  |
| Breakfast Morning and some of your favourite Stalls. Contact Pauline on 01398 331666 for more info. if required.                                                                 | Saturday 12 May<br>10am – 12 noon |  |
| *****                                                                                                                                                                            |                                   |  |
| <b>Morebath Yoga. Monday 10.20-12 noon.</b> Forward session dates:<br>5 & 19 March - 9 & 23 April - 14 & 21 May<br>For info: 01398 332334 or e.mail: rafton.mail@rockspray.co.uk |                                   |  |

## BRUSHFORD PARISH HALL



*Sponsored by Western Power Distribution*

To celebrate our 25th anniversary, we are offering help to local groups and clubs who can bring new activities and new people to Brushford Parish Hall.

We have funding available for a range of activities.

Please see our website for more information.  
[brushfordparishhall.org.uk](http://brushfordparishhall.org.uk)

*For more information contact:*

*07941 139846 or*

*enquiries@brushfordparishhall.org.uk*

*or to see regular classes, please go to  
[brushfordparishhall.org.uk](http://brushfordparishhall.org.uk)*



Instrument Sales &  
Repairs, Books, Sheet  
Music, Gifts and much  
more.....

Rock House, 1 Jury Road, Dulverton

Telephone 01398 324164

[www.oggiesmusic.com](http://www.oggiesmusic.com)

# Roy Hart Computers

## 01884 257288

[chris@rhcomp.co.uk](mailto:chris@rhcomp.co.uk)

 *computing without tears!*

We can offer the **right** solution for the  
**first time & experienced** user

**Is your computer running slowly?**

Contact **Chris** for a MOT & service to keep it in tip top condition

**New Systems ● Upgrades ● Virus & Problem Solving**

*Wifi, Broadband and Smart TV connections*

**FAMILY FIRM SUPPORTING COMPUTERS IN YOUR HOME SINCE 1981**

**SATURDAY 23<sup>RD</sup> JUNE**

# **BARN DANCE**

**DULVERTON TOWN HALL AT 7.00PM  
WITH THE LUCY LASTIC BAND**

**3 COURSE SUPPER, BAR & RAFFLE**

**TICKETS £12.50 ON SALE FROM 1<sup>ST</sup> MAY  
FROM DULVERTON POST OFFICE, THE TANTIVY,  
PHONE 01998 650442**

**OR BOOK ON LINE WWW.DULVERTONRECREATION.CO.UK**

**PROCEEDS IN AID OF ALL SAINTS CHURCH DULVERTON**

**PHILIP MARTIN**

*'Once More With Feeling . . . .'*

A recital at All Saints Church, Dulverton  
on Thursday, 12th April at 8.00pm

Following his workshop  
with children at  
Dulverton Junior  
School earlier in the  
day, Philip will play a  
selection of beautiful  
pieces by Debussy,  
Grieg, Gershwin, Billy  
Mayerl and himself.



Free Admission

A retiring collection in aid of music at Dulverton Schools

# **NIMBLE FINGERS**



Trading since 1994

**23 Fore Street, Dulverton Tel: 01398 323688**

Tapestry Kits & Loose Canvases - Elizabeth Bradley Kits

Cross Stitch Kits & Charts - Free Style Embroidery Kits

Anchor and DMC, Needle Craft Yarns, Knitting Yarns

Selection of dress fabrics including Liberty cotton prints

Accessories for most embroidery needs

Wide range of Haberdashery for Home Sewing and Clothes Repair

Ribbons, Tapes, Elastics, Bindings, etc - all sold by the metre

Buttons - sold singly

Silk Flowers, Floral Art Accessories

**OPEN - Monday to Saturday 10.30am - 5pm - closed Thursdays**



# EXMOOR FOREST INN

**Ideally located in the middle of Exmoor for:**  
 Delicious freshly prepared meals and snacks  
 Local and guest cask ales  
 A warm welcome • Family & dog friendly  
 Beverages and cream teas • Party bookings invited  
 Bed & Breakfast accommodation available  
 New Chef • New Menus

Our large entrance hall is an ideal place to leave walking gear,  
 muddy boots and coats. Towels provided for damp dogs.



Simonsbath, Minehead, Somerset, TA24 7SH  
 telephone: 01643 831341 • [info@exmoorforestinn.co.uk](mailto:info@exmoorforestinn.co.uk)



[@exmoorforest](https://twitter.com/exmoorforest)

[www.exmoorforestinn.co.uk](http://www.exmoorforestinn.co.uk)

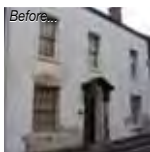
Find us on 

**Craftsmen you can rely on, *Quality* you can trust...**



**01984 629131**  
**07788 810576**

*"Recognised Specialists  
 In Lime Rendering,  
 Lime Plastering &  
 Building Restoration"*



**WOODLOUSE  
 CONSERVATION**  
 LIMITED



**Lime Plastering • Lime Rendering  
 Traditional Damp Management  
 Solutions • Cob Work • Stonework  
 Lime Pointing • Fireplace Restoration**



*"Restoring properties throughout Somerset & Devon"*

**[www.woodlouseconservation.co.uk](http://www.woodlouseconservation.co.uk)**

**STEVE BISHOP**  
**PEST CONTROL**  
**SERVICES**

*Covering West Somerset,  
North and Mid Devon*

*Control of rural,  
residential & commercial pest species*

*Qualified Pest Control  
Technician*

**01643 851267**

**07870 815400**

*For Fast, Friendly, Reliable Service*

**Rats, Mice, Moles,  
Crawling and Flying Insects  
Inc. Wasps, Fleas, Bedbugs,  
Cockroaches, Flies,  
Bird control and proofing  
Electric Fly Killing Units Supplied**

**Save the date**

**COFFEE BREAK**

**Yeo Mill Coffee Break,**

11 am until 12.30pm. March 27th and  
April 24th.

**FLOWER FESTIVAL**

**St. Nicholas Church, Brushford**

26th, 27th and 28th May  
Further details to follow

**EXMOOR**



Meets on the last Wednesday of the  
month at Fishers Mead Community Centre,  
Dulverton (adjacent to Exmoor Medical  
Centre) 10.15 for 10.30 am.

Wednesday 28th March – Earlier start  
time of 10.15 for the AGM Followed  
by a talk 'Clutterbug or Hoarder' by  
Jasmine Sleigh

Wednesday 25th April - Mr M Buckley  
A talk 'The Magistracy, Our British Legal  
System'

**VINTAGE FILM CLUB**

**Wed 14th March**

**BLACK NARCISSUS**

starring Deborah Kerr & Flora Robson –  
1947

**Wed 11th April**

**LAWRENCE OF ARABIA**

starring Peter O'Toole – 1962

2.30 pm at

Fishers Mead Community Centre

**DULVERTON ACTION  
GROUP -**

Litter-picking (3rd Sunday):

Sun 18th March – 10.30 meet by the  
Heritage Centre - Everyone welcome  
and all kit supplied

Sun 15th April – 10.30 as usual

Dulverton Dance presents:

*Gentle Movement to Music*

**All disabilities welcome.**

**For mobility, strength, balance and  
well-being.**

Tuesdays

Dulverton Town Hall

11-12 noon.

£5 drop in or £40 for 10  
consecutive weeks

01398 341 850



**Bampton Home Fuels**  
*Keeping you cosy*

**Find us at**

Lord's Meadow Yard,  
Lord's Meadow Lane,  
(Off West Street)  
Bampton  
EX16 9NJ

**Or call**

01398 332951  
or 07722 003966



Bampton Home Fuels  
are your local **FLO Gas** stockist.  
**Flogas is back in Bampton!**

To meet all your Winter fuel needs  
we also supply high quality logs and  
kindling, coal and firelighters.

All grades of coal and solid fuel  
can be supplied.

Bampton Home Fuels offers you  
First-class prices and service.  
Local deliveries are free.

Bampton Home Fuels,  
Keeping you cosy  
In Mid Devon and Exmoor

01398 332951 | 07722 003966  
[enquiries@bamptonhomefuels.com](mailto:enquiries@bamptonhomefuels.com)

**Wellhayes**  
Traditionally Produced Quality Sparkling Wine from Devon

Vineyard Tours  
Cream Teas  
Wine Tasting

[www.wellhayesvineyard.co.uk](http://www.wellhayesvineyard.co.uk)  
01398 361612

Thursday 8th March

7:30 p.m. Congregational Church Hall,  
Chapel Street, Dulverton.

### **Dulverton's Weir and Leat (History and development)**

Dulverton's 150 metre long weir stretches diagonally across the river and diverts water to the mill leat that flows through the town. It is considered to be "one of the best preserved urban watermill landscapes of medieval origin in England"



DGES members free: Non-members £3 please to help with expenses. Refreshments follow talk.

*This talk by Peter Romaln is preceded at 7:00 p.m. by the group's A.G.M.*



**DULVERTON GROUP  
EXMOOR SOCIETY**

Thursday 12th April

7:30 p.m. Congregational Church Hall,  
Chapel Street, Dulverton

### **WILDLIFE of DEVON from shore to moor**

Exploring the amazing wildlife found in Devon from shore to moor including cuckoos being fed by meadow pipit foster parents, dancing adders, rutting roe deer and the world's largest slug. Talk includes photos, field sketches and video clips



DGES members free: Non-members £3 please to help with expenses. Refreshments follow talk.



**DULVERTON GROUP  
EXMOOR SOCIETY**

## **Paul Priest**

### **LIME PLASTERING & STONEMWORK**

- \* Internal & External Plastering
- \* Traditional & Modern Plastering
  - \* Repairs & Complete Work
  - \* Bespoke Stone Fireplaces
- \* Stone Walls, both Dry & Mortared
- \* Chimneys \* Pointing \* Stone/Tiled Floors
- \* Repairs or New Build \* Solid Fuel Stove Fitting

***ALL GENERAL BUILDING, PLASTERING &  
LANDSCAPING WORK UNDERTAKEN  
COMPETITIVE RATES***

**Contact Paul: 07870 454003**

**[www.priestplasteringstonework.co.uk](http://www.priestplasteringstonework.co.uk)**

## EXMOOR CROQUET CLUB

From April to October the Exmoor Croquet Club will be playing on the QE 2 Playing Field behind the church at Exford every Tuesday at 2pm.

We are a friendly club who play for fun and companionship. You don't need to be 'sporty' or 'athletic', so why not come and enjoy a game?

We'd love to see you. For details contact: Diana 01643 831439 ; Ines 01643 831016; Connie 01398 341566



## CHOOSE YOUR ADVENTURE

[www.westcars-tiverton.com](http://www.westcars-tiverton.com)



CROSSLAND X



ALL NEW GRANDLAND X



MOKKA X

Available with **UP TO 5 YEARS**

**0% APR**

**FLEXIBLE FINANCE**



**VAUXHALL**

Official Government: Test Environmental Data. Fuel consumption figures mpg (litres/100km) and CO2 emissions (g/km). For Crossland X, Mokka X and Grandland X Ranges: Urban: 32.8 (8.6) - 68.9 (4.1), Extra-urban: 49.6 (5.7) - 85.6 (3.3), Combined: 42.2 (6.7) - 78.5 (3.6). CO2 emissions: 155 - 93g/km.

J.C.Sharpe Limited trading as Westcars of Tiverton are acting as a credit broker and not a lender. We will introduce you to a limited number of lenders. Commission may be received. Models shown are Crossland X SE, Grandland X Sports Nav and Mokka X Active. Offer subject to availability on selected models at participating Retailers only. Conditional Sale. Finance subject to status. Ts&Cs apply. Applicants must be 18+ 24 - 60 months term. Offer applies to private individuals, Vauxhall Partners and small businesses 1-24 vehicles (purchase only excluding B2B supported vehicles). All other customers are excluded. Offer available on orders or registrations between 19 December 2017 and 2 April 2018.





for  
Dulverton by Starlight

**Friday 16th March**




**Dulverton Town Hall**

**Eyes down at 7pm**

Light refreshments available



**BOURNEMOUTH SYMPHONY ORCHESTRA BRASS ENSEMBLE**

**SATURDAY MARCH 24th, 7.30pm**

**ALL SAINTS CHURCH, DULVERTON**  
An evening of musical delights with exquisite classical music by Bach and Byrd, to jazz classics such as Oh When The Saints and Just a Closer Walk. Stunning majesty and groove.



**Coffee Morning**

at Abbeyfield House,  
Dulverton

on Thurs 15th March  
from 10.30 – 12 noon



**TOMBOLA**  
**BRING & BUY STALL**  
**HOMEMADE CAKES**  
**GOODY BAGS**

*All welcome*

In partnership with Take Art, we are delighted to present the Bournemouth Symphony Orchestra's Brass Ensemble for an evening of uplifting works for brass quintet. Experience the rare opportunity to hear this ensemble in an intimate concert, exploring works from across the ages, and showcasing professional brass excellence and versatility.

*Tickets £12, students in full-time education £8, from Dulverton Post Office or contact Jan Ross 01398 323818 janaross2003@yahoo.co.uk*

**EBB 'N' FLO DRAINAGE**

**24Hr Emergency Drain Clearance**  
CCTV Surveys - Excavation and Repair  
'No dig' Drain Re-lining - Installations  
Pitch Fibre Repairs - High Pressure Water Jetting

**0800 838 425 / 07875 977 930**

Office: 01398 323695 Email: info@ebbnflo.net Website: ebbnflo-drainage.co.uk



**NatWest Nations**

**Live Games in March**  
 \*\*\*\*\* Free Entry \*\*\*\*\*  
 Licensed Bar open from 30 mins before kick off

- Saturday 10th March 2018**  
 Ireland v Scotland KO 2.15pm  
 France v England KO 4.45pm
- Saturday 17th March 2018**  
 Italy v Scotland KO 12.30pm  
 England v Ireland KO 2.45pm  
 Wales v France KO 5.00pm

**Dulverton Farmers Market**



10.00 - 14.30  
 Last Saturday of  
 the month  
 April - September



Lion Car Park  
 Dulverton  
 TA22 9HB



[www.dulvertonfarmersmarket.co.uk](http://www.dulvertonfarmersmarket.co.uk)

Tel: 01398 323474



**BRUSHFORD PARISH HALLEVENTS**

**RBS NATIONS**

**Live televised 6 Nations Rugby**  
 England match kick off times -  
 Sat 10<sup>th</sup> March 5.45pm  
 Sat 17<sup>th</sup> March 2.45pm  
 Bar open 30 mins before kick off  
 Catch the Match and Cheer with beer!

**The Big Brushford Breakfast  
 & plant sale**  
 Saturday 21st April  
 10am - midday  
 Contact Ann - 01398 323468

**Drop in Café with books**  
 2:30 pm to 4:30 pm, first Thursday every month  
 Books & DVDs 50p Tea and cake available

**POP UP BAR**  
 Sat 17<sup>th</sup> March  
 Bar-Food-Raffle  
 from 7pm

For more information contact: 07941 139846 or [enquiries@brushfordparishhall.org.uk](mailto:enquiries@brushfordparishhall.org.uk)



**Nikki Routledge**  
**Cert CBS**  
**Human Bowen**  
**Practitioner**

Gentle and light therapy suitable for musculoskeletal pain, asthma and allergies, migraines, MS and other chronic conditions in adults, infant colic and bed-wetting or growing pains in children.

**Tel: 07890 968 115**  
**www.mimi.me.uk**



**Rupert White**  
**INTERIORS**



- Full Design Service
- Project management
- Comprehensive range of fabrics
- Curtain making
- Upholstery
- Lighting
- Accessories
- Sourcing
- Floor coverings

**Rupert White Interiors**  
 The Stables, Bampton, Devon, EX16 9LA  
 Tel: 01398 332444  
 enquiries@rupertwhiteinteriors.co.uk  
 Please ring to make an appointment



**HINOH-JIS™**

International Shamanic /Holistic  
 Animal, Earth & Human. Therapist,, Counselling-Practice & Tutoring Business

**Meditation / Visualization Evening**

on the First & Third Tuesday of the month Starting 6 March 2018 7.00pm to 9.00 pm

**The Rainbow Discussion Evening**

On the Second & Fourth Tuesday of the month Starting 13 March 2018 7.00pm to 9.00 pm

At The LARCS Centre, Station Road, Bampton £9.00 per evening

**Please Contact**

**Mrs J Cantillon** B.A.S.Y.B.A.C.H / A.M.A.N.F/M.M.A.N.F/ MASC( Ad.C.S) /B.A.S.Y( animal heal). B.A.Y (Pet Psy) .F.M.A.N.F  
 Practitioner Membership Held with A.H.C.P.

**07858428329** at E-Mail address [hinojhjis@yahoo.com](mailto:hinojhjis@yahoo.com) ,Web Site [hinojhjis.weebly.com](http://hinojhjis.weebly.com),



**HINOH-JIS™**

International Shamanic /Holistic  
 Animal, Earth & Human. Therapist,, Counselling-Practice & Tutoring Business

**ANIMAL BEHAVIOURIST**

Do you have troubles with your animal and wish to understand why your animal is behaving like they are and wish to sort that problem out. I have worked for over 30 years with animals both as a Pet/ Animal Physiologist, Animal Communicator/ Whisperer & Animal Holistic Therapies if you wish I will help you all you have to do is phone me now.

**For the Human Therapy/Counselling Service Offered**

**Please Contact for details**

**Please Contact**

**Mrs J Cantillon** B.A.S.Y.B.A.C.H / A.M.A.N.F/M.M.A.N.F/ MASC( Ad.C.S) /B.A.S.Y( animal heal). B.A.Y (Pet Psy) .F.M.A.N.F  
 Practitioner Membership Held with A.H.C.P.

**07858428329** at E-Mail address [hinojhjis@yahoo.com](mailto:hinojhjis@yahoo.com) ,



**PLEASE NOTE I DO NOT WORK WITH SNAKES ,SPIDERS , REPTILES**

**BECAUSE THEY HAVE A DIFFERENT CONSCIOUSNESS**

**I WORK WITH ALL ASPECTS OF ILL HEALTH**

Physical, Psychological, Emotional & Spiritual.



FRIENDS-OF-  
DULVERTON-  
LIBRARY

## DULVERTON LIBRARY MATTERS

MARCH/APRIL 2018

The **FRIENDS OF DULVERTON LIBRARY** will meet on Thursday March 1st 2018 and April 5th 2018 at 2pm

The **LIBRARY BOOK GROUP** will be meeting on the first Friday of the month (2/3/18) at 2pm. The book we will be discussing is A WEEK IN DECEMBER by Sebastian Faulkes. The book we will be reading in March will be ALL QUIET ON THE WESTERN FRONT by Erich Maria Remarque, to be discussed on 5/4/18. April's book will be REDEMPTION by Richard Burke.

The **CRAFTEERNOONERS** will meet as usual on the 2nd Friday of the month (9/3/18 and 13/4/18) at 2pm. The craft project for March is BEADED BRACELETS and for April will be COLOURING . A charge of £1 applies plus a small charge for materials.

**SCRABBLE CLUB** will relaunch in the new year. We will be meeting on the 3rd Thursday of the month (15/3/18 and 19/4/2018) at 2pm.

**LEGO CLUB** will meet on the 3rd Saturdays of March (17/3/18) and April (21/4/2018) at 10.30am. Booking is essential and a charge of £1 applies.

The **KNIT AND NATTER GROUP** meet on the last Friday of the month (30/3/18 and 27/4/2018) at 2pm. Please bring your own knitting with you.

Dulverton Library now has a **JIGSAW SWAP**. Please drop in and borrow a Jigsaw. A 50p charge applies.

**Just a reminder that you have until midnight on April 22nd 2018 to show your support for your library by completing a Library Consultation questionnaire, available online or in the library.**

WE WILL BE HOSTING A COFFEE MORNING ON TUESDAY MARCH 27th 2018 FROM 10.30am - 12noon

## Bampton Library And Resource Centre

Station Road, Bampton  
Wednesday, March 14 th . 7pm

### Meet the Authors

(Joint with Exeter Authors Association)

Michelle Werrett will talk about the changing natural history of Devon hedgerows. Mark Norman will explore the folklore around 'Black Dog' sightings. Refreshments available

Everyone welcome, Free Entry  
(Donations welcome)

## Somerset Library Services Consultation 2018

Have your say...



From 29 January to 22 April

Proposals are now available to view on potential changes to how future Somerset library services could be delivered

Ask library staff or go online  
for more information

[www.somerset.gov.uk/librariesconsultation](http://www.somerset.gov.uk/librariesconsultation)



# Acorn Antiques



Bespoke Upholstery – Decorative Antiques – Fine Art

Acorn Antiques, 39 High Street, Dulverton, TA229DW,  
01398 323286, [www.exmoorantiques.co.uk](http://www.exmoorantiques.co.uk)

Certificate of Excellence  
2015, 2016 & 2017 winner!



## Hinam Farm Tearoom

Dulverton, Somerset TA22 9QQ  
[www.hinamfarmexmoor.co.uk](http://www.hinamfarmexmoor.co.uk)  
Tel: 01398 323405



*Cream Teas and Light Lunches*

*Stunning location on a real working  
farm in the Barle Valley*

*Tearoom Seasonal*

Sunday Roast - Booking only

All parties for all occasions

Directions: From Dulverton head south out of Dulverton past Bridge Pub with the play area on your left, turn right signposted for Hawkridge, at top of hill turn right signposted for Hawkridge, follow for 2 miles, at next junction turn left after 100 yds you will see our signs.



## WORLD WAR 1 CENTENARY COMMEMORATIONS

### Fred Milton

Born in 1886 at Stonehouse Staplegrave to Edwin 'Chas' and Eliza with brothers Charles, Isaac, Tom, Frank and Willie and sisters Daisy and Edith. In 1901 his family were at Wynne Cottage, Brompton Regis whilst Fred was employed by Mr and Mrs Stevens at Lyncombe Farm Brompton Regis.

By 1911 Mr and Mrs Milton and the younger children, Annie, Tom, Alice and William, had moved to The Castle, Dulverton whilst Fred was working for Mr and Mrs Gardiner on the farm at Clayford, Dulverton.

He joined the Somerset Light Infantry in 1916 and went to France in July 1917 and died of wounds on 26th April 1918. He is remembered at the Loos Memorial.

The Loos Memorial commemorates over 20,000 officers and men who have no known grave, who fell in the area from the first day of the Battle of Loos to the end of the war.

*Tony Sloley*

*Dulverton Heritage Centre*



## Monthly Coffee Morning for Service Veterans and Dependants....

On the first Tuesday in each month since August, the Branch has held a monthly coffee morning for Service Veterans and their Dependants in the Dulverton Library.

There has been a good turnout on each occasion including regular attendance by the County Advice and Information Office, Julie Welch.

*Next Coffee Mornings: 6th March, 3rd April*

**Can you  
spare a  
few hours  
a week?**



**WE ARE LOOKING FOR VOLUNTEERS...**  
TO WORK IN THE CENTRE WHEN WE  
RE-OPEN IN THE SPRING OF 2018.  
WE NEED VOLUNTEERS TO HELP IN OUR  
SHOP AND EXHIBITION AREAS.

- \* VARIED AND INTERESTING WORK
- \* FRIENDLY AND FUN TEAM
- \* NO AGE BARRIER
- \* TRAINING GIVEN, NO EXPERIENCE
- \* HOURS ARRANGED TO SUIT YOU

PLEASE CONTACT THE CENTRE MANAGER  
SUE COTTRELL TO LEARN MORE ABOUT  
WHAT WE DO AND HOW YOU COULD HELP  
US.

TEL: 07969 243887

EMAIL: SMCOTTRELL20@YAHOO.CO.UK

**DULVERTON  
HERITAGE  
CENTRE**

[www.dulvertonheritagecentre.org.uk](http://www.dulvertonheritagecentre.org.uk)

# Exmoor Travel Transfers

*Your holiday starts here*  
*Friendly Service covering Exmoor and*  
*surrounding area*

- Airport, seaport, bus and train station transfers covering Exmoor and surrounding areas
- Same great price 24/7, night or day
- Any genuine quote beaten
- Single and multi pick up/drop off points available
- Holiday, sports and business trips catered for
- Discounts available

**Mob: 07809 155 172**

Email: [exmoortraveltransfers@gmail.com](mailto:exmoortraveltransfers@gmail.com)

Web: [www.exmoortraveltransfers.co.uk](http://www.exmoortraveltransfers.co.uk)



# The Anchor Inn



Historic riverside pub with rooms

Delicious fresh food

Ideal for functions

*The Anchor Inn*  
*The Friendly Country Riverside Inn*

Exebridge, Dulverton, Exmoor TA22 9AZ

Tel: 01398 323 433 [www.anchorinnexebridge.co.uk](http://www.anchorinnexebridge.co.uk)



If you run, or know of, a community group or charity that would get a boost from promoting itself or an event, please get in touch with us. Inclusion for such events is free.



# N. H. Hopkins

## General Builder

### All Building Work Undertaken

No Job Too Small

(01398) 323687





**exmoor trees**

Native trees and shrubs for  
hedge and woodland  
Call us now: 07971 580057  
[www.exmoortrees.co.uk](http://www.exmoortrees.co.uk)

**GERALD DALE**  
General building work  
undertaken

Landscape Gardening  
Stone Walling  
Patis



For friendly reliable service  
ring Gerald on  
01398 323 983  
07971 395 689  
E: [lindadale0508@gmail.com](mailto:lindadale0508@gmail.com)



**KEITH  
FARMER**

BUILDING SERVICES LTD



## KEITH FARMER BUILDING SERVICES LTD

- ARCHITECTURAL DESIGN • PLANNING & DEVELOPMENT •
- BUILDING REGULATIONS • BUILDING CONTRACTORS • PROJECT MANAGEMENT •
- New Builds/ Conversions/ Extensions/ Commercial/ Industrial/ Listed Buildings •

**FREE INITIAL ADVICE AND ESTIMATE**

**01823 666223**



[www.keithfarmer.co.uk](http://www.keithfarmer.co.uk)



Helen Thackwray

h♥me

holistic healing for personal living spaces

following:

accidents, bereavement  
change in residence  
general upheaval  
geopathic stress, illness  
feeling unable to settle  
property damage  
or to 'birth' a new home

- \*survey to identify key energy blocks
- \*plan for healing problem areas
- \*help with clutter clearing
- \*enhancement of energy flow
- \*house blessing ceremonies

helping you to transform  
the energy of your h♥me

☎ Helen on 01398 323401



landscape  
services

[www.tjlandscape.co.uk](http://www.tjlandscape.co.uk)

Garden Design  
& Landscape Construction

• Fencing • Patios • Paths • Ponds  
• Decking • Stone Walls • Turfing

Tim Jackson  
31 Lower Meadow Road,  
Minehead, Somerset,  
TA24 6AW

mob. 07748644376  
email. [tim@tjlandscape.co.uk](mailto:tim@tjlandscape.co.uk)

## WOODCOTT LANDSCAPING

Turn your outside space into that  
special place ready for summer

- 
- Patios and Decking
- Stone and brick walls
- Steps, arches and pergolas
- Turfing and Lawn drainage
- Raised beds and borders
- 

Call Martin on 01398 322981  
or 07960944964

## Alder Cottage



**Self-catering cottage on edge of Exmoor, sleeps 6 - 16**

**Fully accessible, pet friendly**

**Onsite parking, woodland walks**

**Quiet residential site, edge of East Anstey, 5 miles from Dulverton**

**01398 400101**

**[www.alder-cottage.co.uk](http://www.alder-cottage.co.uk)**

**[info@alder-cottage.co.uk](mailto:info@alder-cottage.co.uk)**

## SEW 'N' SEW

*Curtains & Soft  
Furnishings*



Quality hand sewn made to measure curtains, blinds, pelmets, cushions, bedspreads & bed valances

Curtains adapted and altered to fit  
Clothing alterations

Curtain poles, tracks, venetian and roller blinds

Range of Fabrics available

**Belinda Hopkins** 01398

10 Barnsclose,  
Dulverton, Somerset,  
TA22 9DZ

324 053

[sew\\_n\\_sew@hotmail.co.uk](mailto:sew_n_sew@hotmail.co.uk)

## *Upton Coaches* Day Excursions, Theatre trips, Short Breaks & Holidays 2018



Contact us for a 2018 brochure!

- **Clarks Village Street** - Tuesday  
6th March - £14.00pp
- **Bath** - Saturday 10th March -  
£14.00pp
- **Barnstaple for Market Day and Atlantic Village designer outlet** -  
Tuesday 20th March - £14.00pp
- **Weston Super Mare** - Sunday  
25th March - Only £11.00pp
- **Dartmoor Tour with lunch** -  
Friday 13th April - £24.00pp inc
- **A Tour at Cardiff Castle & Cardiff**  
Tuesday 17th April - Ad £31.50  
Sen £29.50
- **Newton Abbot Market Day** -  
Wednesday 18th April - £14.00pp
- **Beautiful – Carol King Musical**  
Saturday 7th April 2018  
£74.50pp inc.
- **The Band Take That's New Musical** - Saturday 28th April  
2018 - £64.50pp inc
- **Miss Saigon** - Saturday 2nd  
June 2018 – £76.00pp inc
- **Flashdance** - Saturday 30th  
June 2018 – £59.50pp inc
- **Thriller Live** - Saturday 14th  
July 2018 - £42.50pp
- **Shrek the Musical** - Thursday  
9th August 2018 - £54.50pp
- **An Officer and a Gentleman Plymouth Theatre Royal** -  
Saturday 25th August 2018 -  
£51.00pp

@ Bristol Hippodrome

Tel: 01398 371 271 | Email: [info@uptoncoaches.co.uk](mailto:info@uptoncoaches.co.uk) | [www.uptoncoaches.co.uk](http://www.uptoncoaches.co.uk)

# Exmoor is on the move!

Exploit the fantastic paths network of Exmoor National Park to your advantage and escape the pounding of pavements. With over 1000 km of footpaths and bridleways, trail running on Exmoor is the perfect place to enjoy more than just a stunning backdrop. We have a varied terrain of open moorland, steep woodland combs, and miles of coast path to enjoy, allowing you to revel in the beautiful scenery and test your mettle at the same time.

There are paths and routes for all abilities. Whether you are looking to ease your joints with a soft springy track, or sharpen your reactions with a rocky incline. The OS Explorer map for Exmoor is a useful start to discovering paths to run. The terrain and weather on Exmoor can be unpredictable, make sensible decisions and be aware of other path users.

If you would like to find other people to run with, as well as accessing some great trails, there are many keen running groups on Exmoor. Our landscape all lends itself to testing your endurance, and plays hosts to a number of running events too.

Check online for more information, look for "Exmoor Run 2018".

© Photographs Peter Hendrie





## Exmoor Rotary Club

We are delighted to report that our annual 'Santa Sleigh' donations and sponsorship totalled just over £2100, all of which will be used for local good causes and projects; we are very grateful for your generosity. Our annual Community Sunday Lunch in aid of Shelterbox also raised a good sum, adding to over £50,000 raised in the years since the tsunami. We have also run a public-speaking competition for our three local schools, hosted by Dulverton – winners were a Bampton team speaking on "Why more girls should love maths", and the runners-up came from Bolham School.

For your diary, the next Rotary inter-pub Quiz Night will be on 22nd March at 7 different pubs in the area. We are also in the final planning of our two Exmoor Challenge walks for adults (April) and young people (May). In the latter, nearly 500 children walk 16 miles on a circular route – quite a challenge! Sponsorship goes to Children's Hospice SW.

For much more information, try [www.exmoor-rotary.org.uk](http://www.exmoor-rotary.org.uk) which has now had a substantial make-over to make it also work well on tablet computers and smart phones.

---

## NEW YOUNG COORDINATOR for EXMOOR YOUNG VOICES

Jade Evans appointed to the role of Exmoor Young Coordinator for the Exmoor Young Voices.

Jade is 23 years old, and has been living and working on Exmoor for 5 years. She started out working with Race Horses and Hunt Horses, and moved into Marketing for a company in South Molton. Throughout her time on Exmoor, it became clear that for the young adults living around here, it is important to have a voice. Jade wants to be that voice and listen to what the young adults of Exmoor have to say, and help make a difference.

She says that Exmoor is the most beautiful part of our country, and believes that the more we can help the young people of Exmoor, especially to keep living and working here, the more the area will benefit economically, socially and physically in years to come. Her email: [exmooryoungvoices@hotmail.com](mailto:exmooryoungvoices@hotmail.com) mob: 07807 363085



**The Exclusive Cake Company** is moving from Dulverton High Street back to the bakery in Northmoor Road – a short walk from the Post Office. The shop closes Friday 23rd March, re-opens Monday 26th March.

\*Dedicated customer parking. \*High quality handmade pies, cakes and bread. \*Freezer meals to include new recipes/desserts. \* Wonderful celebration cakes. Tel: 324131

Would you like to advertise cheaply? Text only advert space, £10 per issue (minimum 4 issues, ie £40. If 6 booked - £50). Contact us 07497 914441 or exmoornews@gmail.com



### Fishing Season open

For the Dulverton Angling Association the fishing seasons are now open so it's a time of eager anticipation.

Some members will have dressed their own flies over the winter and will have high hopes that they will catch fish better than any other fly.

Then there is the curiosity to see how the river itself has changed over the winter, trees get blown down, boulders moved, gravel beds shift and a whole host of other things may happen which can completely eradicate your favourite 'hot spot' or create something even better. We would have started the year in February with the AGM, courtesy of the Lion Hotel, then 4 or 5 days with working parties out on the river aiming to improve the general river environment; what is good for the river is good for fish, insects, birds, bats and the stability of the river bank itself. It's hard work and there is always a lot to do. However its also rewarding and our volunteers do a great job.

Then there is the reward; a nice calm, warm spring day with trout starting to feed and you just know you are going to have a nice day.

For further details see <http://www.dulvertonanglingassociation.org.uk>

## BOBCAT HIRE

*Skid Steer Loaders  
44" & 48" Wide  
Mini Diggers - 1.5, 4 & 5 Ton  
Available with Post Hole Auger  
& Rock Breaker/Post Banger*

**SELF DRIVE**  
*Competitive Rates*

**Tel: 01598 740406**  
**Mobile: 07970 914070**

Richard Smith  
Agricultural Engineer  
North Molton, Devon

## Lance Nicholson Country Pursuits



9 High Street, Dulverton  
01398 323409

Shotguns, rifles,  
ammunition, clays etc.  
All your game fishing needs  
plus details of the  
Dulverton Angling Association.  
Large range of Barbour clothing.

[www.lance-nicholson.co.uk](http://www.lance-nicholson.co.uk)



# Tarr Farm Inn

Tarr Steps, Dulverton, Exmoor, TA22 9PY

Tel: +44 (0)1643 851507

Email: enquiries@tarrfarm.co.uk

## OPENING HOURS:

Monday to Friday 11am to 11pm

Saturday & Sunday 11am to Midnight



Great Food :: Great Location :: Great Welcome



[www.tarrfarm.co.uk](http://www.tarrfarm.co.uk)

Midweek  
Specials  
Sunday - Thursday  
Book 2 nights  
get one FREE!  
T&C apply



  
**marsdens**  
 Devon Cottages

*Trust the local experts*

- Competitive commission rates
- Friendly, expert advice and support
- High booking levels and competitive commission rates to deliver the best income for you
- Over 96% of our owners would recommend us
- Bespoke services to suit your needs – we can take care of as much or as little as you need
- Strong online presence across multiple websites.

Arrange a no-obligation visit today, by visiting  
[www.marsdens.co.uk](http://www.marsdens.co.uk) or calling **01271 813777**

## **DULVERTON PET SUPPLIES**

Pet Foods and accessories. Wormers

Flea and tick treatments

Wild bird food, feeders and nest boxes

Private orders taken. **LOYALTY SCHEME**

Members' monthly **PRIZE DRAW**

**41 High Street Dulverton**

**01398 323063**

[dulvertonpetsupplies@gmail.com](mailto:dulvertonpetsupplies@gmail.com)

[www.dulvertonpetsupplies.co.uk](http://www.dulvertonpetsupplies.co.uk)



**All Breeds are welcome for:**

**Clipping, Stripping, Scissoring, Bathing & Drying**

**Bath and Brush outs (B & B's) – To keep your dog squeaky clean and matt free inbetween grooms**

**All Grooms include bath, trim, styling, nail clipping and ear cleaning if needed.**

**Puppies are welcome for puppy baths and grooming to get them prepared for their grooming life.**

**Gentle, Caring & Patient**

**Please call Denise on  
 01398 324370 or 07584085668**

**9am – 5pm Monday to Friday  
 Brushford, Dulverton, Somerset**



## A DOG'S DAY OUT

### Learning a New Trade : Understanding Your Owner



Being a dog and asked to write an essay is not an easy combination. The dog has been given a command it does not understand. So here is a tip your pet may find useful. Look your owner straight in the eyes and cock your head to one side. This movement translates to a clearer explanation is required please. Correctly applied (timing is essential) it normally gets you the extra attention you deserve. I tried it just the other day. It works.

Of course we all know the usual stuff, our names, Sit, No, Get down, Come here. But when she said "Solvent", what was I to do? Unbelievably early in the morning I wake up when she switches on the light on the bedside table. I follow her downstairs and watch her make a "Cup of Tea". I know that one. Might even take a little refreshment myself before we go back upstairs and under the bed covers. She picks up lots of little bits of paper and spreads them about. I try to get comfy without stepping on them (or Honey who gets incredibly cross if disturbed before half past seven).

She apologises. She's always polite. "I need to see if we are still Solvent!" I gave her the aforesaid look and this time she responded with "I'm checking to see if we can afford yum yum for your tum tum", pointing at me. Got it! roll over! Rewarded with a pat. And there's more.

She's looking at ways she can make us a Tax Allowable Expense? (I need time to work this one out). "I wonder" she says "if we can put in a claim for 50% of the electricity we use at home". I vacuum up all the dog hair in the house once a week". That often? I know when she has finished the sofa she does the carpets, inside the oven, in the powder tray of the

washing machine, between the pages of the book she is reading, and behind the wallpaper. I think she's forgotten the Benefits though. I can do those.

Did you know dogs expose you to bacteria you may not have otherwise encountered, keeping your microbiome refreshingly varied? (Did I just write that!!) It's true. It's one of the perks of owning us dogs. We reduce your cholesterol by eating your food and take you for a walk in the great outdoors at least twice a day saving you an expensive gym membership. Feeling better? "Yep, it's time to get up".

*Buddy Brown (pure Jack Russell) Roving Reporter*

*References: 'How it works' The Dog. A Ladybird Book. Published by Penguin £6.99*

*Dr. Phil Hammond – TV presenter and author of Staying Alive: How to get the best from the NHS.*

*Published by Quercus, £14.99*

**The Winsford Dog School**  
**Winsford Village Hall**

*Training for that perfect companion!*

**Classes on Monday evenings:**  
**Reserve your place on**  
**the January course now**  
Puppies - 5:30pm  
Improver/Adults - 6:30pm  
Adults - 7:30pm

**Courses run for 6 weeks.**

**All welcome from pups to geriatrics.**

To book a place please contact  
Suzy on 01643 851281  
[www.suzyandcanines.co.uk](http://www.suzyandcanines.co.uk)  
[dilly7a@yahoo.com](mailto:dilly7a@yahoo.com)

1:1 is always available for behavioural issues  
or training to get ahead!



**New Build  
Extensions  
Renovations  
Loft Conversions**

**Tel: 01398 323789**  
**Mobile: 07837 729484**

**Email: [mikecottrell20@gmail.com](mailto:mikecottrell20@gmail.com)**

**BLACKERTON CROSS  
GARAGE**



**CARS, VANS & 4X4 SALES  
SERVICE, REPAIRS, WELDING,  
TYRES & EXHAUSTS  
MOT Preparation  
01398 341405**

View our current vehicles for sale at:  
[www.blackertoncrossgarage.co.uk](http://www.blackertoncrossgarage.co.uk)  
[enquiries@blackertoncrossgarage.co.uk](mailto:enquiries@blackertoncrossgarage.co.uk)

East Anstey EX16 9JT  
On the B3227 between  
South Molton & Bampton



**JOHN FRENCH**

**(Plumbing and Home  
Improvements)**

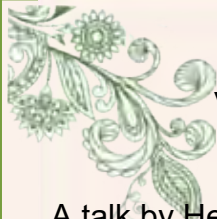
***Karslake House, Winsford,  
Minehead, TA24 7JE.***

All aspects of plumbing carried  
out at affordable rates.

Full Bathroom and Kitchen  
installation service.

*(Call for a free estimate)*

***No job too small.***  
**Tel: 01643 851215**



### *Tuesday 6th March*

Visit to Wood Barton, Kentisbeare.



### *Thursday 15th March*

A talk by Henry Cruwys, Growing vegetables for showing.

### *Thursday 5th April*

Visit to Higher Burnhaies, Butterleigh.

### *Thursday 19th April*

A talk by Claire Hart, Growing up!, Vertical gardening.

Talks take place in the Dulverton Town Hall. Doors open at 6.45pm.

Talks to start promptly at 7.30pm. Refreshments available.

Times and arrangements for trips to be confirmed once numbers are known.

Please contact Jenny Boyce to confirm if you would like to go on any trips, 01398 323463.



## **Exmoor Landscaping**



Local and reliable

Clearance and ground works

Stonewalling and steps

Patios and ponds

Fencing and treework

Turf supplied and laid



**Tel: 01984 640530**

**or Mobile: 07974 141790**

**or visit [www.exmoorlandscaping.co.uk](http://www.exmoorlandscaping.co.uk)**

## **Exmoor's Hedgelaying Competition Runs Again!**

Exmoor National Park Authority is pleased to announce the launch of the 2017/18 Exmoor Hedge Competition.

The competition is aimed at the landowners, managers and contractors who actually carry out the high quality hedgelaying work for the benefit of Exmoor's farming, wildlife and landscape.

To be eligible to apply, all or part of the farm must be within Exmoor National Park and the hedge laid during the winter of 2017/18. There will be two classes, 'Open' and 'Novice' and the winner of each class will receive £200, 2nd place £100 and £50 will go to the 3rd place. The judges include members of the Devon and Somerset Hedge Groups, who are experienced West Country hedge layers

themselves. The previous year's Open Class winners are also invited to join the judging panel.

Work carried out during the autumn and winter months has resulted in a considerable transformation along many lanes and field edges, as once-shady, outgrown hedges are cut and laid. This traditional management is crucial in order to rejuvenate the hedgerows which are iconic features of the Exmoor landscape, reflecting our cultural heritage and supporting an incredible range of wildlife. The work is very skilled and provides employment for numerous people on Exmoor during the winter months.

Susan May, Chairman of the Exmoor Trust said: "The Exmoor Trust is delighted to sponsor this competition again this year and encourages all hedge layers to enter."

Heather Harley, Conservation Officer (Farming & Land Management) for Exmoor National Park said: "If you would like to enter the competition you have until 4th May 2018 to submit your entry form together with at least one photo of the completed *(Continued on page 35)*

## **BRIDGE COTTAGE TEAROOM**

**WINSFORD, TA24 7JE**

**Tel: 01643 851362**

[www.bridgecottageexmoor.co.uk](http://www.bridgecottageexmoor.co.uk)



**Open from Wednesday 28<sup>th</sup> March 2018**

Opening Hours:

10:30 to 5:00pm Wednesday to Sunday

(Closed Mondays & Tuesdays except for Bank Holidays)

**Offering**

homemade cakes, cream teas, light lunches & daily specials.

**Sunday Roasts – bookings only**

**Fully Licenced**

Available for private parties

Well behaved dogs welcome

Ample seating inside & out

(Continued from page 34)

hedge and if possible a photo of the hedge before work took place.

For further information or an entry form please ring us on 01398 323665 or email [hjharley@exmoor-nationalpark.gov.uk](mailto:hjharley@exmoor-nationalpark.gov.uk)."

The Exmoor Hedge Competition is being run by Exmoor National Park Authority and again has been possible through the generous sponsorship of the Exmoor Trust. [www.exmoortrust.org.uk](http://www.exmoortrust.org.uk)



## TONY BROOKE CARPETS & FLOORING

CARPET ■ VINYL ■ FLOTEX  
NATURALS ■ SAFETY FLOORING  
CAMARO ■ RUGS ■ RUNNERS ■  
MATS & MORE!

- Free estimating and planning
- Expert advice and fitting
- Over 25 years experience
- Home-choose service
- Re-stretches, re-adaptions and repairs
- Great deals on roll stock and remnants
- Already bought a carpet? We'll fit it!
- Price Promise - we won't be beaten



Tel: 01984 632206

Visit our showroom

Units 2 & 3, Roughmoor Industrial Estate,  
Williton, Somerset TA4 4RF

[www.tonybrookecarpetsandflooring.co.uk](http://www.tonybrookecarpetsandflooring.co.uk)

## CanDo4U



No job is too small.  
If you need it done,  
call to get your work  
done at a fair price.

Estimates are free, so  
don't wait, call Mike.

07866 429896  
01398 323968

- \* Painting & decorating
- \* Small maintenance work
- \* Lawn mowing & gardening
- \* General help around the home

Leave a message if I'm busy,  
I'll get back to you soon.

Fully insured, local and reliable service.



## Diamond Shine

# Mobile Vehicle Valeting

## Professional Affordable Reliable

### Your local vehicle cleaning company

# 07896 154 176

[phil46yam@hotmail.com](mailto:phil46yam@hotmail.com)

## Dulverton Netball Club News

It has been said recently that netball is the fastest growing sport at the moment and we are definitely enjoying the big netball boom in Dulverton! 2017 brought

lots of new and returning faces to Dulverton Netball Club and 2018 is looking set to be an exciting year!

We have just entered a team in the Spring social league held in Taunton which gets underway in March. This league is perfect for players to gain experience and progress after maybe taking a break from playing and generally enjoy some exercise and have fun.

Our team currently playing in the Exeter & District league is doing very well! We are just over half way through having played 11 out of 18 games with 1 draw, 2 losses and 8 wins, total of 501 goals scored and 357 against us making for a record goal

difference of 144! We are currently in 2nd position in our division. Just one point behind Upplowman in 1st and one point ahead of the West Exe Jaguars in 3rd who we are due to play at the end of February. It really is all to play for!

If you want to see what we get up to and think you may be interested in finding out a bit more about Dulverton Netball club either as a novice or wanting to get back playing after a break, please come along to any training session. Netball is a great way to get a bit of exercise and have fun too! As well as training and the leagues, we often have friendlies with local teams and have a fantastic social calendar! We love socialising as much as netball! We train every Thursday at Dulverton Junior School courts 6.30 – 8.00pm and you can often find us in The Bridge Inn afterwards for 'team talks'! For any further information please find us on Facebook-Dulverton Netball Club or contact Lindsay on 07973146571



**Vehicle Adaptations for Drivers and Passengers  
New and Used Wheelchair Accessible Vehicles  
Scooters - Wheelchairs - Walking Aids  
Bathroom Aids - Incontinence Products  
Furniture - Home Accessories**



Pathfields Business Park, South Molton, Devon, EX363LH  
01769 572785 www.adaptacar.uk sales@adaptacar.uk



**Jamie Williams**  
*(Painters & Decorators)*

*All aspects of  
Professional Painting & Decorating  
Exterior & Interior  
Paper Hanging Specialist  
Floor & Wall Tiling  
Sanding, Rewaxing & Oiling  
Wooden Floors*

**01984 640181**

**07766 917137**

*For a FREE estimate call Jamie  
Email: [jamiethedecorator@yahoo.com](mailto:jamiethedecorator@yahoo.com)*

# PHILLIP LEWIS

for all your  
**FENCING - GATES**  
**HEDGE LAYING**  
**& BANKING**  
**CHAINSAW WORK**  
**LOGS**

**Phone 01398 331716**  
**Mobile 07854 434757**



*Heard's Housekeeping*

General Housework  
Deep clean / End of Tenancy clean  
Move in - out clean  
All aspects of cleaning  
Business or Home

Tel: 01884 257808

Tel: 01398 332844

Mob: 07633 980331

Mob: 07535 140719

Email: [heardshousekeeping@yahoo.com](mailto:heardshousekeeping@yahoo.com)

Fully Insured & Reliable



## Exmoor BookBinding

01643 841116

[sarah@the-burns.com](mailto:sarah@the-burns.com)

**Repairs & Restoration to  
all your favourite books.**



Albums, Folios  
Scrapbooks &  
Journals  
made to order.



## Haddeo Firewood

Dumpy bag  
kiln dried oak  
firewood **£50**

Dumpy bag  
seasoned oak  
firewood **£40**

Bickham, Timberscombe, TA24 7UA

*Delivery by arrangement.*

**BERNARD DRU 07920 516225**

*e-mail: [bernard.dru@oakfloor.co.uk](mailto:bernard.dru@oakfloor.co.uk)*

# Chris Flay

## Plumbing & Heating Engineer



For Quality Workmanship  
and Guaranteed Success

RAYBURN

Boiler Servicing & Maintenance

Rayburn Sales & Service

Gas, Oil and Solid Fuel Installations

Oil Tank Replacement - 24 Hour Service

Domestic or New Housing Enquiries Welcome

STANLEY

AGA

25 YEARS  
EXPERIENCE



OIL BURNER CONVERSION

**NETHER STOWEY (01278) 732 732**

The Arches, South Lane, Nether Stowey, Bridgwater

# EXE PEST

All types of pest control services & supplies

**01398 331195 home Wonham Lodge**

**07812 037716 Graham Bampton**

**07484 632595 Andy EX16 9JZ**



**Rats, Mice, Fleas, Ants, Wasps,  
Bees, Cockroaches, Flies, Moths.**

**info@exepest.com**





The first dates of the new CareMoor for Exmoor Dining Club have been released. Top chefs are supporting the National Park by holding special lunchtime and evening events celebrating their use of local produce and raising funds to help keep Exmoor special.

During the meal, diners will enjoy hearing from the chefs, as well as some of their suppliers, about their passion and love for Exmoor produce. Events will take place throughout the year at different locations from award-winning restaurants to unique pop up events across Greater Exmoor. Each event will have its own unique menu created specifically to celebrate locally sourced produce. Whilst highlighting their passion for local food, the chefs are also supporting the National Park as the fixed price meal for each event includes a contribution to CareMoor for Exmoor, which raises funds for nature, heritage and access projects across the National Park.

The first dates for 2018 include:

- \* Saturday 3 March a four course evening meal presented by Head Chef Barrie Tucker Chef at Psalters Restaurant, at the Luttrell Arms, Dunster.
  - \* Thursday 29 March with Chef John Bradley at the Coleridge Restaurant, Dunkery Beacon Country House Hotel with a 'Taste of the Moor' tasting menu
- Dan James, Sustainable Economy Manager for Exmoor National Park said,

"The Dining Club is part of our joint Eat Exmoor project which aims to spread the message about

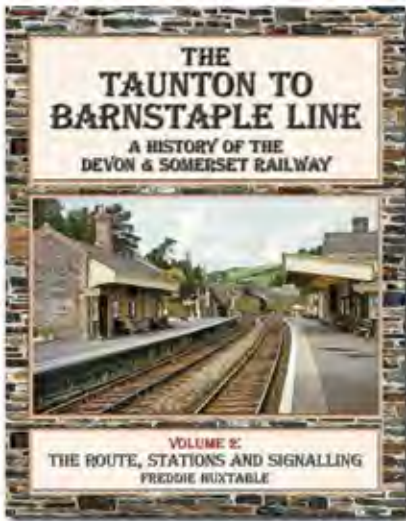
the quality of our local food and its link with the landscape we all love and want to conserve. CareMoor for Exmoor is our donations scheme, which helps to keep Exmoor special. We are very grateful to the chefs and venues who are supporting us by hosting a Dining Club event and hope that this will give people a unique opportunity to experience the true taste of Exmoor."

As part of the Eat Exmoor project Visit Exmoor (the official tourism association) is also publishing a new, free Eat Exmoor food and drink guide early next year and local food lovers can sign up for a foodie E-Newsletter making sure they hear about all the latest food events including those under the banner of CareMoor for Exmoor Dining Club.

For full details, prices and booking information visit [www.exmoor-nationalpark.gov.uk/caremoor](http://www.exmoor-nationalpark.gov.uk/caremoor). Further Dining Club dates will be added throughout the year.



John Bradley and Claire Lynch



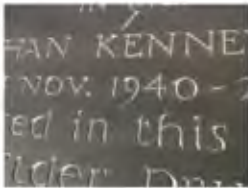
**THE TAUNTON TO BARNSTAPLE LINE**  
 A HISTORY OF THE DEVON & SOMERSET RAILWAY  
**VOLUME 2: THE ROUTE, STATIONS AND SIGNALLING**  
 FREDDIE HUXTABLE

Volume 1, published in 2016, covered the history of the railway from construction, to take over by the GWR and its ultimate demise in 1966. The second volume brings the line back to life, with a detailed descriptive journey from Taunton to Barnstaple, illustrated with many photographs, a number of which have not been published before. There are also detailed track plans for each station and a focus on some of the key structures on the line. The final chapter covers signalling.

236 pages, 215 x 275mm, printed full colour throughout on gloss art paper, laminated card covers. ISBN 9781911038 31 3  
**Price £25.00**

**BLACK DWARF LIGHTMOOR PUBLICATIONS LTD**  
 Unit 144B, Harbour Road Industrial Estate, Lydney, Gloucestershire GL15 4EJ  
 Tel: 01594 840641 / 01993 773927. Email: info@lightmoor.co.uk  
 Website: www.lightmoor.co.uk  
 Please enquire for trade terms. Orders over £60 post free

# LAURENCE J. W. BECKFORD MONUMENTAL MASON & CARVER



SLATE MEMORIAL



TRADITIONAL HAND CUT LETTERING



MEMORIAL BENCH

## HEADSTONES and MEMORIALS

Individually designed and hand carved in Dulverton  
 Refurbishment of existing headstones and memorials including re-fixing, painting and gilding

0772 4452 961

[www.beckfordsartworks.co.uk](http://www.beckfordsartworks.co.uk) [laurence.beckford@sky.com](mailto:laurence.beckford@sky.com)

Full member of the Master Carvers Association (M.C.A)

# Dulverton Abbeyfield

Residential Home

*Providing Care and Companionship for the Elderly*

- Relaxed, friendly atmosphere, social activities.
- Quiet, convenient location, attractive garden.
- Excellent locally sourced food and local staff.
- Guest room, ideal for convalescence or short-term respite.

Please contact: House Manager, Frances Chanter 01398 324136



**Providing Quality  
Farm Assured  
Meat from the  
Heart of Exmoor**

We have a delicious range of fresh meat boxes, Boer goat, lamb and Angus Beef.

Boer goat meat is known for having lower levels calories, total fat, saturated fat and cholesterol than traditional meats but has higher levels of iron.

Meat comes in either 10 or 20kg boxes freshly prepared to order, to ensure you get a top quality product.

We offer free delivery across England and Wales.

West Twitchen Ball Farm, Twitchen,  
South Molton, Devon. EX363LX

Tel: 01598740311 – Mob: 07990 590613



[www.Exmoormeataboxes.co.uk](http://www.Exmoormeataboxes.co.uk)  
[sales@exmoormeataboxes.co.uk](mailto:sales@exmoormeataboxes.co.uk)



## CHIMNEY SWEEP

NACS REGISTERED  
CLEAN AND EFFICIENT  
FULLY INSURED/ CERT ISSUED  
COWLS AND BIRDCARDS FITTED  
WOODBURNERS REFURBISHED  
POWER SWEEPING  
CCTV CAMERA SURVEYING

PHONE IAN

TEL : 01984 640893

MOBILE : 07502099323

## Claire Benton

5 Silver Street, Bampton, Devon EX16 9NR

### Accountancy Services offering

■ Payroll ■ Auto Enrolment from 1 to 99 employees

Any area covered

Email: [cjbenton123@gmail.com](mailto:cjbenton123@gmail.com) Tele: 01398 332048 Mobile 07754 577691

# REGIS ROOFING & BUILDING

- Damp & Condensation Problems Solved!
- Loft Conversions
- Painting & Decorating
- Timber Frame Structures
- Kitchens & Bathrooms
- Roof & Chimney Repairs

Phone Jason on  
01643 705540  
jfmullett@aol.com

## Valued Volunteers Needed!

Could you help and support people in your community of Dulverton towards work?



If the answer's yes! you could be just the volunteer we value to help with a new Community Employment Hub in Dulverton. It will be held once a month on a Thursday morning at the Dulverton library.

The Community Employment Hub will focus on offering:

- CV writing, searching and applying for work
- Support with IT
- Interview preparation
- Raising confidence and self esteem
- Social interaction in a positive and relaxing environment

If you think you would like to be a valued volunteer please contact Colleen Blake at West Somerset Council on 07932316158

# Larchwood Cattery

East Anstey EX16 9JL



Purpose built

Individually heated chalets

Spacious outdoor runs

Tel: 01398 341100/07598813621

Email: [Info@larchwoodcattery.co.uk](mailto:Info@larchwoodcattery.co.uk)

[www.larchwoodcattery.co.uk](http://www.larchwoodcattery.co.uk)

## ENJOY A HEALTHIER LIFESTYLE

Discover the Benefits of  
**ALOE VERA** with  
**Forever Living Products**

The World Leader in  
the production of Aloe Vera

Our products contain 100%  
stabilised Aloe Vera gel

**Take a look at our exclusive  
range of Aloe Vera health and  
skincare products**



**Sandra Wilson**

Phone 01398 324687

E: [sandra.wilson@ylem.com](mailto:sandra.wilson@ylem.com)

Independent Distributor of  
Forever Living Products

Forever Living Products is a member of  
the Direct Selling Association Approval  
Code: Hoap0116



**Julie Price**  
**07740 865600**

**Save £2 on every  
rug wash during  
March and April 2018**

FREE collection for 5 or more rugs.  
10% discount for 10 or more rugs.

**Drop off and collect at Dulverton,  
Oldways End and The Farmers Den.**

50p per rug donation to the Exmoor Pony Centre

[www.prismequinelaundry.co.uk](http://www.prismequinelaundry.co.uk)

## LINDA LONDON FITNESS



From September 2017  
All Classes £4.00



|                 |                          |                                   |
|-----------------|--------------------------|-----------------------------------|
| Mon<br>7.00pm   | Dulverton<br>Town Hall   | Over 50's - Use it or Lose it     |
| Wed<br>10.00am  | Brushford<br>Parish Hall | Move, Tone, Chat & Go             |
| Thurs<br>6.00pm | Dulverton<br>Town Hall   | Over 50's - Tone, Stretch & Groan |
| Thurs<br>7.15pm | Dulverton<br>Town Hall   | Step, Tone, Sweat & Stretch       |

T: 01398 323393

E: [linda@lindalondon.plus.com](mailto:linda@lindalondon.plus.com)

## Somerset Community Connect

# Talking Cafe

*Multi agency information cafe  
providing free advice and support.*

- Providing a place for the community to access several agencies in one location, in an informal, relaxed environment.
- Come along for advice and support with professionals and volunteers you can trust - from health to finance - support is here for you.
- Pop in for a cuppa and a chat - open to any Adult 18+

**10am - 12pm Free Advice**  
First Tuesday of EVERY month Starting 6<sup>th</sup> February  
Porlock Library

Call 01823 331222 or email [info@somersetcc.org.uk](mailto:info@somersetcc.org.uk)  
[www.somersetcc.org.uk/talkingcafe](http://www.somersetcc.org.uk/talkingcafe)



**THE SHIFTERS**  
**Spirebourne Limited**

Liquid Waste Disposal and Drainage Co.

**FREEPHONE 08000 855185**

[spirebourne@hotmail.co.uk](mailto:spirebourne@hotmail.co.uk)  
[www.spirebourne.co.uk](http://www.spirebourne.co.uk)

### EMERGENCY CALL OUTS

Septic Tank/ Cess Pool Emptying – Any Size  
Grease Traps  
Drain Blockage Clearance  
Various Commercial Liquid Waste Disposal  
Servicing  
CCTV Drainage Surveys  
Pump Repairs & Renewals  
Installation of Septic Tanks & Sewage Treatment Works  
Mantair Units

# Roger L Hammond Architectural Design Services

Free initial consultation  
Feasibility studies and design advice  
Measured survey, detail drawings  
Planning and building regulations applications  
Extensions, barn conversions and new build  
Listed buildings and conservation work  
Specifications prepared  
Tendering, procurement and supervision  
Residential and commercial  
35 years experience

Reasonable rates

Tawny, 8 Great Meadow, Dulverton,  
Somerset, TA22 9DT  
Tel/Fax: 01398 324644, mobile 0777 906 0969  
e mail; rl.hammond@btinternet.com  
website;www.rlhammond-architecturaldesign.co.uk



# HOBBS Electrical Contractors Ltd



\* Commercial \* Domestic \* Industrial \*

Electrical Installation  
Rewires, new builds & renovations  
Maintenance & Repairs  
Inspection & Testing, Portable Appliance Testing

**Dulverton: 01398 323518    Tiverton: 01884 253563**

Unit 4, Exebridge industrial Estate, Exebridge, Dulverton, Somerset, TA22 9BL

# G.S. GARDEN MACHINERY

## Sales and Repairs of all Garden Equipment

Agents for:

Makita

**Makita**



Castel and  
Lawn King  
Ride Ons and  
Mowers



**CASTELGARDEN**

**LAWN-KING**



Tanaka Brush  
Cutters and  
Hedge Cutters

**Tanaka**

**New and Secondhand  
Friendly Service**

Units 1 & 2A, Carnarvon Arms Garage,  
Brushford, Dulverton, Somerset TA22 9AG.

Tel: 01398 32 44 55 Email: [gsgardenmachinery@gmail.com](mailto:gsgardenmachinery@gmail.com)



PHOENIX CHIMNEYS

*Need your Chimney swept or thinking  
of having a Log Burner fitted?*

It could be damaged or blocked with birds nests. If so it could be a fire risk and may lead to deadly Carbon Monoxide fumes leaking into your home. Now is the time to get it checked.

**We cover North Devon, West Somerset, Exmoor, North Cornwall. We have full Public Liability Insurance and certificates are issued to confirm work.**

**The services we provide are:**

- Full sweeping service to all chimneys
- including Rayburns, Agas and Stanleys
- H.E.T.A.S. registered installer of Wood and Multifuel burners.
- Service and repairs
- Gas and smoke detectors supplied and fitted
- Chimney stack repairs
- Supply and Fit all types of Cows, Bird guards and chimney pots
- Landlord & holiday home owner solid fuel appliance safety checks issued.



Follow us on our  
Twitter and  
Facebook pages  
for more information  
and offers.

*Call to arrange a no obligation site visit*

[www.phoenix-chimneys.co.uk](http://www.phoenix-chimneys.co.uk)

01271 855543 / 07956 866593



**OIL BURNER SERVICE  
MAINTENANCE & REPAIRS**

**PAUL JONES  
EXFORD**



*with over 15 years experience*  
OFFERING YOU THE BEST QUALITY  
OIL BURNER SERVICING AROUND

**COMPETITIVE RATES  
BEST QUALITY SERVICE  
ALL REPAIRS UNDERTAKEN**

*Call now on 01643 831384  
or 07811 600694*

## ***Narrow Gauge Railway - spread the word***

Please support the L&BR in 2018! Join today:

<https://www.facebook.com/groups/lyntonandbarnstaple/>

and please share!

"The Last Narrow-Gauge Railway Adventure"

<https://www.lynton-rail.co.uk/>



# Forever Animal Care

**Care For Your  
Animals  
Holistically**



\*Information, training and advice

\*Aloe Vera healthcare for your animals and family

[www.taranet.co.uk](http://www.taranet.co.uk) [info@taranet.co.uk](mailto:info@taranet.co.uk) 07796 882396 FB: @HolisticAnimal



# THE COPPER KETTLE Tea Rooms & Gardens



In the Heart of Dulverton you will find the wonderful quintessential Copper Kettle Tea Rooms. Make use of our fantastic gardens in which dogs on leads are made most welcome

Please pop in for a welcome break. We open at 0930 till 5pm daily, Sundays we will be open seasonally from 1030 for when you deserve a rest and a cup of tea or a full cream tea served with lashings of fresh clotted cream.



21 Fore Street  
Dulverton  
TA22 9EX  
01398 323 697



## Edworthys Carpet & Window Cleaning

- Gutters ■ Facias
- Roof Cleaning
- Upholstery

Please contact Tom for a free quotation.

**Friendly, reliable and very professional**

**01398 323696 - 07984 057527**



## EDWORTHYS OVEN CLEANING

The Flat, Abbeyfield House, Dulverton,  
Somerset TA22 9BY

**01398 323 696**



**Professional, Reliable, Friendly  
and Competitive Pricing.**

**For a free quotation, please call  
us on 01398 323 696 and we will  
happily arrange a date and time to  
suit you.**

## Come Fly Away

Come fly away in April to Neverland with the Dulverton Players. The popular Exmoor theatre company is staging a pantomime version of "Peter Pan" in the first week of the month.

Tamsin Blackmore plays Peter, the "boy who never grew up", who leads a family of London children off through the night skies to a magical world. There are excitements and dangers too as Peter, aided by the fairy Tinkerbell played by Steph Wade, take on the dastardly Captain Hook. Nick Thompson appears as the mono-manual pirate with a crocodile phobia. Enthusiastic young actors from Dulverton schools will make up half of director Olga Owen's cast of thirty.



"Peter Pan" will be staged at Dulverton Town Hall from Wednesday, April 4th to Saturday, April 7th. Tickets are available from Dulverton Post Office telephone 01398 323474.

# Exmoor web design

## Web Design by Malcolm Godfrey

- Affordable Websites from £99
- Hosting from £25
- Email - included
- Search Engine Optimisation (SEO)
- Secure Websites (<https://> SSL)
- Specialist in Wordpress
- Personal service

Based in Exmoor – serving the Southwest

Email: [malcolm.godfrey@exmoorwebdesign.com](mailto:malcolm.godfrey@exmoorwebdesign.com)

Web: <https://exmoorwebdesign.com>

Phone: 07725810907

# *The* FRIENDSHIP & SONS FUNERAL DIRECTORS

Independent Funeral Directors offering a caring and compassionate service to families across Exmoor

- Chapel of rest
- Home Visits
- Pre paid funeral plans

For professional advice and guidance please contact



**TEL: 01398 324590 (24 Hours)**



Office and Chapel of Rest at Unit 7 Barle Enterprise Centre, Dulverton, TA22 9BF



## Exmoor Plumbing

Reliable Plumber no job too small

**Radiators, cylinders, tanks, bathroom suites, taps, ballvalves, washers, showers, soilpipes, wastepipes, gutters.**

**All plumbing work covered**



**01984 639629 / 07970 632 114**



Exmoor News is published every two months, 2,800 copies printed (covering southern Exmoor) and also published online at [www.exmoornews.co.uk](http://www.exmoornews.co.uk)  
For more information E: [exmoornews@gmail.com](mailto:exmoornews@gmail.com) T: 07497 914441

### THE LOCAL DIRECTORY

#### PARISH AND TOWN COUNCILS

|                                                      |                                                                                                      |              |
|------------------------------------------------------|------------------------------------------------------------------------------------------------------|--------------|
| Bampton T.C.: Clerk: Penny Clapham                   | <a href="mailto:clerk@bamptontowncouncil.gov.uk">clerk@bamptontowncouncil.gov.uk</a>                 | 01647 253066 |
| Brompton Regis P.C.: S Buchanan                      | <a href="mailto:brpcclerk@gmail.com">brpcclerk@gmail.com</a>                                         | 01984 641706 |
| Brushford P.C.: Clerk: Clive Knight                  | <a href="mailto:cliveknight@me.com">cliveknight@me.com</a>                                           | 01398 331917 |
| Cutcombe P.C.: Clerk: Marlene P Allinson             | <a href="mailto:cutcombeclerk@btinternet.com">cutcombeclerk@btinternet.com</a>                       | 01643 708810 |
| Dulverton T.C.: Sec: Miss A. Rose                    | <a href="mailto:clerk@dulvertontowncouncil.co.uk">clerk@dulvertontowncouncil.co.uk</a>               | 01398 324561 |
| East Anstey P.C.: Clerk: Mrs Jill Larcombe           | <a href="mailto:eastansteypc@yahoo.co.uk">eastansteypc@yahoo.co.uk</a>                               | 01884 252647 |
| Exford P.C: Clerk: Jane Laycock                      | <a href="mailto:parishclerk@exford.org">parishclerk@exford.org</a>                                   | 07388 500912 |
| Exmoor P..C.: Clerk: Verity Vigars                   | <a href="mailto:exmoorparishcouncil@gmail.com">exmoorparishcouncil@gmail.com</a>                     | 01643 831511 |
| Exton P.C.: Clerk: Andrew Moore                      | <a href="mailto:clerk@extonparishcouncil.co.uk">clerk@extonparishcouncil.co.uk</a>                   | 01643 851694 |
| Upton P.C.: Clerk: Mrs P Purvis                      | <a href="mailto:uptonparishclerk@hotmail.co.uk">uptonparishclerk@hotmail.co.uk</a>                   | 01398 371548 |
| Winsford P.C.: Clerk: Caroline Moore                 | <a href="mailto:winsfordparishcouncil@gmail.com">winsfordparishcouncil@gmail.com</a>                 | 01643 851694 |
| Withypool & Hawkridge P.C.: Clerk: Charlotte Hornsby | <a href="mailto:withypoolhawkridgeparishclerk@gmail.com">withypoolhawkridgeparishclerk@gmail.com</a> | 01643 831535 |
| Wiveliscombe T.C.: Clerk: Bryan Howe                 | <a href="mailto:townclerk@wiveliscombe.com">townclerk@wiveliscombe.com</a>                           | 01643 704963 |

#### LOCAL CHURCHES AND CHAPEL CONTACT NUMBERS

|                                                                                |              |
|--------------------------------------------------------------------------------|--------------|
| All Saints Church, Dulverton: The Rev. Andrew Thomas                           | 01398 323018 |
| Brompton Regis with Withiel Florey, Upton and Skilgate: The Rev. Andrew Thomas | 01398 323018 |
| Brushford: The Rev. Andrew Thomas                                              | 01398 323018 |
| Exmoor Benefice: The Rev. David Weir, The Rectory, Exford, TA24 7LX            | 01643 831330 |
| Catholic Church: Priest: Father Michael                                        | 01643 702201 |
| Dulverton Congregational Church, Chapel St: Minister:                          | 01398 323744 |
| The Traditional Anglican Church: Loxbear, Priest Reverend Aird                 | 01769 581042 |
| Exmoor Benefice Choir: Mrs B. Staples                                          | 01643 851396 |

**ARTS**

|                                                                                 |              |
|---------------------------------------------------------------------------------|--------------|
| Dulverton Art Group: Sec: Mrs G Rose, 2 Stable Mews, The Square, Witheridge     | 01884 860495 |
| Dulverton Camera Club: Sec: Peter Main, 4 Valley View, Morebath, Tiverton, EX16 | 01398 331556 |
| Dulverton Players: Chair: Les Silverlock                                        | 01398 341850 |

**SPORTS CLUBS**

|                                                                                                                           |              |
|---------------------------------------------------------------------------------------------------------------------------|--------------|
| Anstey Short Mat Bowls: Chris Dale                                                                                        | 01398 341615 |
| Bridgetown Cricket: Sec: Mr. D. Sherring, Mid-Wicket, Bridgetown, Dulverton. TA22 9JN<br>administrator@bridgetowncc.co.uk |              |
| Brushford Short Mat Bowling: Sec: Sam Takle                                                                               | 01398 324147 |
| Cutcombe Cricket: Sec: Mrs Maria Adams, 1 The Beeches, Wheddon Cross                                                      | 01643 841036 |
| Dulverton Angling Assn: c/o Pat Veale, 9 High St., Dulverton, TA22 9HB                                                    | 01398 323409 |
| Dulverton Badminton Club: sec Judy Smith                                                                                  | 01398 324353 |
| Dulverton Cricket Club: Robert Dubery                                                                                     | 01398 323474 |
| Dulverton Cricket Club, Colts: Mrs Christine Dubery                                                                       | 01398 323474 |
| Dulverton & District Tennis Club: Sarah Collins                                                                           | 01398 332856 |
| Dulverton & Exmoor Squash Club: Membership Sec: Chris Winter. chriscwin@aol.com                                           | 07710 046107 |
| Dulverton Jnr. F.C: Sec: Mrs Christine Dubery                                                                             | 01398 323474 |
| Dulverton Netball Club: Sec Lindsay Smith, 25, Nicholas Close, Brushford                                                  | 01398 323834 |
| Dulverton Snooker: Sec: Mr. D. Bodger, 39 Fishers Mead, Dulverton, TA22 9EN                                               | 01398 323899 |
| Dulverton Sports and Social: Chair: Carl Hooper                                                                           | 01398 324494 |
| Dulverton Sportsfield Management: Adrian Smith                                                                            | 01398 323834 |
| Dulverton Senior Table Tennis: Richard Archer                                                                             | 01398 324160 |
| Dulverton Town F.C: Sec: Mr. J. Atkins, 1 Exebridge, Dulverton. TA22 9AY                                                  | 01398 323787 |
| Exford Croquet Club: Chair: Connie Heywood                                                                                | 01398 341556 |
| Moorland Hall Sports: info@wheddoncross.org.uk                                                                            |              |
| Tai Chi: Instr. Andrew Blabey RITCUGB andrewbee@tiscali.co.uk                                                             | 01398 332104 |
| Wimbledon Fly Fishers: enquiries@fishingthewest.co.uk                                                                     |              |

**PRE-SCHOOL GROUPS**

|                                                            |                             |
|------------------------------------------------------------|-----------------------------|
| All Saints School & Nursery:                               | 01398 323231 & 01398 323223 |
| Anstey Parent and Toddlers Group: Jodie Thomas             | 01398 341845                |
| Little Owls Nursery at All Saints C of E School, Dulverton | 01398 324360                |

**SCHOOLS**

|                                                                                   |              |
|-----------------------------------------------------------------------------------|--------------|
| All Saints C of E School: Fishers Mead TA22 9EN                                   | 01398 323231 |
| Brompton Regis Toddlers: Mrs.S. Julian, Court Place Farm, Skilgate                | 01398 331031 |
| Cutcombe C of E First School: Wheddon Cross, TA24 7DZ                             | 01643 841462 |
| Dulverton Junior School: Barns Close West, TA22 9EE                               | 01398 323223 |
| Dulverton Children's Centre: All Saints School, Fishers Mead TA22 9EN             | 01398 324360 |
| Dulverton Family and Toddlers Group:                                              | 01398 324329 |
| Dunkery PreSchool: Supervisor: Mrs. S. Matravers, Shute Close, Cutcombe, Minehead | 01643 841008 |
| East Anstey Primary School: East Anstey, Tiverton, Devon, EX16 9JP                | 01398 341369 |
| Little Owls Nursery: All Saints School, Fishers Mead TA22 9EN                     | 01398 324360 |

**WOMEN'S ORGANISATIONS**

|                                                                                |              |
|--------------------------------------------------------------------------------|--------------|
| Anstey W.I.: President: Mrs. C Wood                                            | 01398 341472 |
| Brompton Regis W.I.: Sec: Mrs. P. Beecham, Rose Cottage, Brompton Regis        | 01398 371407 |
| Cutcombe & District M.U.: President, Pam Anson                                 | 01643 851616 |
| Cutcombe & District W.I.: Mrs. Pam Anson                                       | 01643 851616 |
| Dulverton & Brushford M. U.: Mrs A. Gregory, 22 Jury Road, Dulverton, TA22 9DU | 01398 323587 |
| Exford Moorhens: Chairman: Mrs. I. Collett                                     | 01643 831016 |

**YOUTH ORGANISATIONS AND ACTIVITIES**

|                                                                                 |              |
|---------------------------------------------------------------------------------|--------------|
| Bampton Scouts/Cubs/Beaver748s: Tony Weiss                                      | 01398 331901 |
| Dulverton & District Young People's Project: Coordinator: Judy Ernest           | 01398 323313 |
| Dulverton Ballet: Mrs Wightmore, Flat 3, Easter House, St. Andrews St. Tiverton | 01884 253999 |
| Exmoor Community Youth Club: Organiser Laura Tasker, Fridays 6 – 8 pm           | 01643 831125 |

## OTHERS

|                                                                                                                                 |               |
|---------------------------------------------------------------------------------------------------------------------------------|---------------|
| Abbeyfield House                                                                                                                | 01398 324136  |
| Brushford Luncheon Club: Treasurer: Margaret Albery                                                                             | 01398 324587  |
| Care Direct for help and advice: <a href="http://www.somerset.gov.uk">www.somerset.gov.uk</a>                                   | 0300 1232224  |
| Cutcombe Flower & Produce Show: Sue White                                                                                       | 01643 841142  |
| Dulverton Action Group: Magdalena Harding                                                                                       | 01398 323 785 |
| Dulverton & Bampton Luncheon Club (Ex-Probus): Organiser: Terence Dapp <a href="mailto:terrydapp@aol.com">terrydapp@aol.com</a> | 01398 332252  |
| Dulverton & District Civic Soc: Kathy Currie, Bramble Bank, Ellersdown Lane, Brushford, Dulverton TA22 9BH                      | 07493 518350  |
| Dulverton & Southern. Exmoor Twinning: Chair: Steve Ford, Dulverton                                                             | 01398 323016  |
| Dulverton Bridge Club: Sec. Brian Hughes, <a href="http://www.Bridgewebs.com/dulverton">www.Bridgewebs.com/dulverton</a>        | 01398 331219  |
| Dulverton Dance:                                                                                                                | 01398 341850  |
| Dulverton Ballroom Dance: Sec: Mrs Christine Dubery                                                                             | 01398 323474  |
| Dulverton Development Forum: Sec: Mrs J. Ross                                                                                   | 01398 323818  |
| Dulverton Films: Jan Ross                                                                                                       | 01398 323818  |
| Dulverton Fellowship for Mental Health: Marion Silverlock                                                                       | 01398 341850  |
| Dulverton Gardening Club: Roger Hammond                                                                                         | 01398 323954  |
| Dulverton Group Exmoor Society: Sec: Dr Ken Mills                                                                               | 01398 331482  |
| Dulverton Vets                                                                                                                  | 01398 323285  |
| Dulverton Vintage Films: Magdalena Harding                                                                                      | 01398 323785  |
| Dulverton Voluntary Drivers: Mike Beale                                                                                         | 07743 885115  |
| Exmoor Patient Group: Chair: Sandra Wilson, W Nightcott, Dulverton TA22 9RT                                                     | 01398 324687  |
| Exmoor Beekeepers Association: Sec: Caroline Ralph                                                                              | 01643 851622  |
| Exmoor Community Bus Assn: Sec: Mr. G Knock, 6 Pounds Close, Brushford TA22 9AL                                                 | 01398 324555  |
| Exmoor Pony Centre: Ashwick, Dulverton, Somerset, TA22 9QE                                                                      | 01398 323093  |
| Exmoor Pony Society: Sec: Sue McGeever, Woodmans, Britthem Bottom Cullompton, Devon EX15 1NB                                    | 01884 839930  |
| Exmoor Rotary Club: Humphrey Berridge (PRO), Station Hse, Luke St, Bampton                                                      | 01398 332324  |
| Royal British Legion Dulverton: Peter Donnelly                                                                                  | 01398 323030  |
| TA22 Voluntary Lift Scheme (formerly Brushford Voluntary Lifts): Chair: T. Wilson                                               | 07528 326880  |
| Tiverton Model Aero Club: Sec: Mr. P Veale, 9 High St., Dulverton TA22 9HB                                                      | 01398 323409  |
| U3A Exmoor: Yvonne Moorfoot, 3 Lamb Back, Dulverton                                                                             | 01398 323529  |
| West Somerset Advice Bureau:                                                                                                    | 01643 704624  |

# TIVERTON & TAUNTON FLOORING LTD

39 Bampton Street & William Street Warehouse  
Tiverton, Devon, EX16 6AH

## HAL WHITE

Mobile: 07770 637 368

# 01884 257 144



**Home Reared Free Range  
Pork, Lamb & Beef**

Small Beef Box           7-8 kgs  
Half Pig incl Sausages   22 kgs  
Half Lamb Box           9-10 kgs

Or try a mixed box packaged  
ready for your freezer

Local delivery/collection



**A family run shop with a  
big Exmoor welcome!**

Local produce, fine foods, organic  
fruit & veg, organic bread, cakes  
& pies

Exmoor breakfast and breakfast  
baguette, freshly prepared food to  
take away. Christmas Hampers.

Fresh meat, bacon, sausages &  
ham supplied by Kendle Farm.

*Open from 8.30 am for coffee  
and breakfast*

T: 01643 851298  
E: sales@kendlefarm.co.uk  
Kendle Farm, Exton,  
Dulverton TA22 9LA

T: 01398 323878  
5a Bridge Street,  
Dulverton TA22 9HJ

**Find us opposite the Bridge Inn**

Folding Chairs/Table Hire  
Licensed Waste Carrier  
House Clearance  
Seasoned Logs  
Bric a Brac  
Valuations  
Antiques

Brushford  
**Bizarre**

**Tony Skilton**  
Carnarvon Arms Garage  
Brushford TA22 9AG  
Tel: 01398 324 150  
Mob: 07802 357 962  
Email: taskilton@aol.com



**Tel: 01884 257808**

- **NEW BUILDS**
- **EXTENSIONS**
- **RENOVATIONS**
- **LOFT CONVERSIONS**

Jimsam View, Canal Hill, Tiverton, Devon EX16 4JE

**Tel: 01884 257808**

**Mobile: 07977 993526**

**Email: [nick6692@sky.com](mailto:nick6692@sky.com)**

