

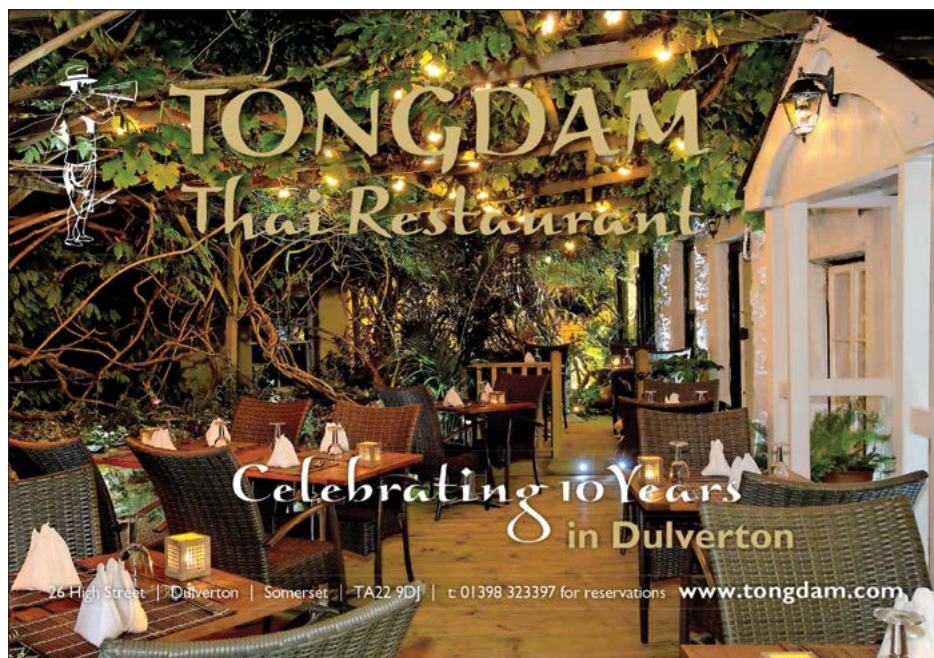
# EXMOOR NEWS

MAY/ JUNE 2016

Bridgetown  
Brompton Regis  
Brushford  
Bury  
Cutcombe  
Dulverton  
East Anstey  
Exebridge  
Exford  
Exton  
Hawkridge  
Luxborough  
Skilgate  
Simonsbath  
Upton  
Wheddon Cross  
Winsford  
Withypool



Bringing community news across southern Exmoor



# EXE VALLEY PEST CONTROL

*All Types of Pest Control Services & Supplies*



National Pest Technicians Association

We are a local family business  
based in the Exe Valley.

Our services cover  
**RATS, MICE, MOLES, FLEAS,**  
**FLIES, WASPS, HORNETS,**  
**ANTS, BED BUGS**



in fact all types of crawling and flying insects.

We do not charge for collecting Honey Bees.  
We can supply all types of pest control products at  
amazing prices, contact us for a free quote

**01398 331195 07812 037716**

**Seven days a week**

**BAMPTON EX16 9JZ**





# EXMOOR NEWS

## DULVERTON & SOUTHERN EXMOOR

Thank you for the positive feedback to our first edition - we are listening. As you can imagine, our main challenge is dovetailing such a wealth of info into the Exmoor News - there is a lot going on here! To that end, we really like your stories that expand who you are and what you do, so don't hesitate to send a paragraph about yourself, your business or your group - you never know, it may pull in new members or customers. Finally, as a favour to us, if you successfully find goods or services in Exmoor News, please tell the advertisers where you got their details from - that way we can keep providing our magazine free to you.

*Best wishes*

*Ceri Keene and Claire Savill*

Contact Details E: [exmoornews@gmail.com](mailto:exmoornews@gmail.com) T: 07497 914441 W: [www.exmoornews.co.uk](http://www.exmoornews.co.uk)

Post: The Old Stores, Brushford, Dulverton, Somerset, TA22 9AH

The deadline for the July/August issue of the Exmoor News is

**Thursday 2nd June 2016**

Printed by Maslands, Exeter

Cover photo: © Alan Jones, Exmoor Photographers



FEBRUARY		
	DULVERTON	WINSFORD
Rainfall total	174.9mm	192.3 mm
Wettest Day		37.6mm, 6 <sup>th</sup>
Coldest temp	-0.5	
Warmest temp	3	
MARCH		
Rainfall total	130.6mm	122 mm
Wettest Day		29.5mm, 8 <sup>th</sup>
Coldest temp	1	
Warmest temp	17	
Thanks to John Gregory and Ann Le Bas		

Whilst every effort is made to ensure the accuracy of the information in this booklet, no liability can be accepted by the editors and publishers for any loss, damage or injury caused by errors in, or omissions from, the information given. Please also note that in the publication of trade adverts, the editors do not guarantee the quality of services provided by any of these advertisers. The editors reserve the right to decline to publish any item and to amend or shorten material.



## May & June Events

1st June,  
Eden Project.

A trip to the Eden Project. This will include a 1 hour garden tour by a member of staff.

If weather is bad the tour will be inside the Mediterranean Dome.

4th June, Annual Plant Sale.

2.00pm – 4.00pm To be held in the garden at Budds House, Rosemary Lane, Dulverton. Both vegetable and flower plants for sale. Refreshments available.

4th May, Visit to Otter Nurseries,  
Nursery visit and steak evening.

A large nursery with plenty to see. Walk around at your leisure then visit the restaurant for your steak supper. £9.95 single or £17.00 for two, leaving Dulverton at 3.30pm.

19th May, Hostas and Ferns.

Bowdens hold the national collection of Hostas, they have received a gold medal at Chelsea and hold a Royal Warrant as suppliers to HRH The Prince of Wales.

Their talk will be informative and humorous, questions and answers as usual plus plants for sale.

Cutcombe First School, Timberscombe First School, Dunkery  
Preschool and Timberscombe Preschool  
Present an...

## AUCTION OF PROMISES



On Friday the 6<sup>th</sup> of May at the  
Moorland Hall,  
Wheddon Cross

Doors open at 7pm for a  
7.30pm start.

*Just some of the lots...*

Meals out at 'The Rest and Be Thankful', 'Locks Tea Rooms' and 'The George at Brompton Regis'. Food and drink from Exmoor Ales, Budgens, and Pork & Pigs. Gifts from Mole Valley Farmers, West Somerset Railway, and East Luccombe Feeds. Not to mention- A chauffeur driven Jaguar, homemade cakes, hampers, babysitting, and a load of logs!

Bar provided by The Rest and Be Thankful.

Contact Sally Parish on 01643 841891

# Masons Kings

# Country STORE

Come and visit our Country Store for all of your  
household, garden, pet & agricultural needs

- Clothing, safety & footwear
- Equine products & accessories
- Toys & gifts
- Haylage, shavings & straw
- Garden machinery
- Lawn care products
- Stihl chainsaws & trimmers
- Wide range of animal feed & accessories
- And so much more...



**SUTTONS**  
SEEDS  
Est. 1866

**CRAGHOPPERS**  
World Travel Clothing

**HARPERS FEEDS**  
FOCUSSED ON NUTRITION



JOHN DEERE



**STIHL**

**Togqi**

01398 322140 / melissa.n@masonskings.co.uk  
Exebridge Ind Estate, Nr Dulverton, TA22 9BL

**Pip Utton Theatre Company  
PRESENTS**

**PLAYING MAGGIE  
DULVERTON TOWN HALL  
SATURDAY, APRIL 30th,  
7.30pm**



Not merely a reflection on how to portray this lady, but a live audience with Margaret Thatcher. Love her or hate her? Not for Pip to decide, only to portray. She divided the nation like no other politician, she changed the face of British, perhaps world, politics forever and the effects of her influence and policies are still felt

today. Listen to her philosophies, her inspiration and her logic and then . . . . .ask her a question!

Pip Utton is known throughout the world for his spellbinding portrayals of Hitler, Churchill, Dickens, Casanova, Chaplin, Hancock and many others. Maggie is probably Pip's greatest challenge yet. He not only becomes Margaret Thatcher but risks taking audience questions, and answering them as Maggie! Pip scooped major awards for Maggie at Edinburgh Fringe Festival 2015 and also won the prestigious Stage Special Award for Acting Excellence and Contribution to the Fringe.

*Tickets £8.50, students in full time education £6  
from Dulverton Post Office  
or phone Jan Ross, 01398 323818  
or email [janaross2003@yahoo.co.uk](mailto:janaross2003@yahoo.co.uk)*

*Organised by Dulverton Development Forum  
in partnership with Take Art, supported by  
Dulverton's Community Budgeting Fund.*



The  
**Tantivy**  
SINCE 1939  
Celebrating 75 years

**Traditional Shop  
Café & Deli**

**Delicious Local Food and Drink.  
Confectionery, Gifts and Cards.  
Wines, Spirits, Ales and Ciders -  
Exmoor Gin.  
And Much More!**

**Open 7 days a week  
Fore Street, Dulverton T: 01398 323465  
[www.tantivyexmoor.co.uk](http://www.tantivyexmoor.co.uk)**



**Multiple Sclerosis Society**

**Friday 13th May 2pm – 4.30pm**

Please join me at my cake break to support this fundraising event in the communal lounge, Hanover Court, Dulverton.

There will be a variety of cakes on sale with teas/coffees sold too and lots of fun, finished off with a raffle.

*Please help stop this dreadful disease.  
Look forward to seeing you.*

*Linda hammond tel:- 323954*

## **DULVERTON CARERS SUPPORT**

Do you give up your time to care for a family member, a friend or a neighbour and are completely unpaid? You could be a parent carer, a young carer, or care for an older person or other adult with care needs.

Dulverton has a carers group that meet the 1st Tuesday of each month.

Come and visit us at Dulverton's Carer Support Group  
Exmoor Medical Centre, Dulverton  
May 3rd Oakhouse Foods Demo  
June 7th Coffee and chat (let's go over the new Care handbook)

2:30pm—4pm

Professional advice and visiting speakers, a listening ear, opportunities for training and meeting other carers in a relaxed, social environment

*For more information contact Maria Knight at Compass Carers on 01823 255911*

*Email [maria@compassdisability.org.uk](mailto:maria@compassdisability.org.uk)  
[www.compasscarers.org.uk](http://www.compasscarers.org.uk)*



## **The Wine Lady** 'Delivering Wine To Your Door'



## **WINE FOR EVERYONE**

**Parties / Weddings / Local &  
Business Events/ Clubs / Gifts**

*Sale or Return – Glasses*

**[www.moorwine.co.uk](http://www.moorwine.co.uk)**

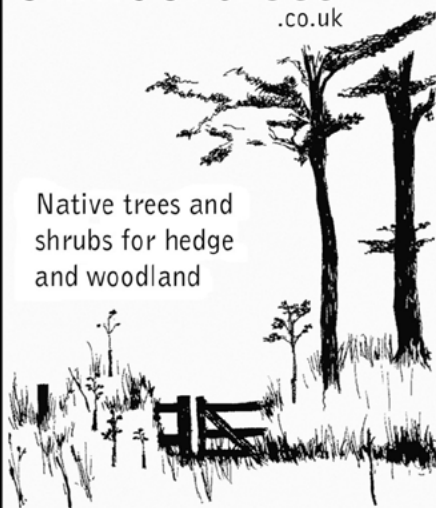
**01398 341406 / 07970 567628**

**[info@moorwine.co.uk](mailto:info@moorwine.co.uk)**

www.

# **exmoortrees** .co.uk

Native trees and  
shrubs for hedge  
and woodland



**Call us on: 07971 580057**



## GUILDHALL HERITAGE AND ARTS CENTRE, DULVERTON

Open from March 21st to end of October  
Mondays - Fridays, 10.30- 4.30, Saturdays, 10.30- 1, Sundays 2-4.30  
[www.dulvertonheritagecentre.org.uk](http://www.dulvertonheritagecentre.org.uk)

### PRIVILEGE AND POVERTY IN DULVERTON

Unravelling stories of Exmoor House Workhouse and our fine houses -  
NEW ASPECTS ADDED THIS YEAR, INCLUDING NORTHMOOR



### Events

#### **DULVERTON TOWN TOURS** with Tony Sloley

Why not join us on a guided walk exploring the history of Dulverton? Discover some secret places and hear tales of old from local guide. Meet at Heritage Centre.

Tuesday 3rd May 4pm

Thursday 2nd June 4pm

Thursday 26th May 4pm

Wednesday 22nd June 4pm

#### **WALK, WONDERS AND VIEWS**

Thursday 5th May at 2pm

As part of the North Devon and Exmoor Walking Festival, an organised walk around Dulverton. Meet at Dulverton Heritage Centre at 2pm for a walk through Burrigge Woods, up Looseall Lane and back via School Lane. Stunning views with a great opportunity to see wildlife in its natural habitat - with some local history added to the mix. £2.50 per person. 3.5 miles long, medium difficulty.

#### **Kids guided tour to explore Dulverton's Past**

Tuesday 31st May at 2pm

Tour with Quiz, suitable for children aged 9 - 12 must be accompanied by an adult. Duration 1 hour. £2.50 each. Email [smcottrell20@yahoo.co.uk](mailto:smcottrell20@yahoo.co.uk) to book your place.

#### **GRAND BOOK SALES** at Heritage Centre, weather permitting

Friday 27th May 10am - 4pm

Friday 24th June 10am - 4pm

#### **TALKS**

Thursday 12th May at 4pm Talk and presentation by Vicki Nuttall (past owner of Town Mills) as part of the **National Mills Weekend**

#### **EXHIBITIONS IN THE GALLERY**

8th May - 14th May

#### **Maisie Parker**

Paintings, drawings and prints all based on the human figure

15th May - 21st May

#### **Dulverton Art Group**

Art and craft by local members

29th May - 4th June

#### **Jane Andreoli and Sue Baker**

'Out of this World' - Visions of Iceland in photography and textile art

26th June - 2nd July

#### **Richard Blackmore**

Landscape paintings, mostly of Exmoor



**EXFORD GARDEN CLUB  
PLANT SALE & COFFEE MORNING  
May 11<sup>th</sup> Wednesday**

10.30 – 12pm

*In aid of Somerset & Dorset Air Ambulance  
& Garden Club  
In Exford Memorial Hall  
Raffle & White Elephant*

**BRUSHFORD PARISH HALL POP UP BAR**

**Saturday 28<sup>th</sup> May & 25<sup>th</sup> June**

*Bar - Food - Raffle from 7pm  
Everyone welcome!*

**FERRET RACING  
LUXBOROUGH VILLAGE FIELD**

**SUNDAY 5<sup>TH</sup> JUNE 4PM**

Adults £5 Under 16 £2.50

Includes Beef Burger or Hot Dog extra  
food available at £2.50

Licensed Bar Tote

*Trainers wanted in advance cost £5*

*Winning Trainer wins a Bottle*

*Ownership auctioned on the day*

*Contact Dave Powell 01984 641647*

**SAVE THE CHILDREN**

**Coffee Morning**

**Monday 20<sup>th</sup> June 2016**

10.30 - 12.30

**At FORDHOLLOW, Withiel Florey**

**TA24 7DD, 01398 371208**

*Bring and Buy, Raffle*

*Coffee, tea, Cakes, etc.*

*All welcome, Donations*

Margaret Winzer and family wish to express thanks to everyone who has been in touch or sent cards or messages following the death of John – your many acts of kindness and sympathy have all been much appreciated, and £592.18 was raised for the Dorset and Somerset Air Ambulance.

**DULVERTON TENNIS CLUB  
is pleased to announce  
A**

**'ROD STEWART EXPERIENCE'  
EVENT**

*in the grounds of Knackershole, West Knowle,  
Dulverton*

*on Sunday, 24<sup>th</sup> July. Gates open at 5 pm.*

*Tickets £15 - Bar - Food - Free Parking*

*Further details nearer the event.*

**MANY HOME GROWN PLANTS FOR SALE**

At the gate from early to late,

NICE PLANTS FROM 50p

A percentage of gate sales will be donated to  
HELP FOR HEROES this summer.

SCATTERBROOK FARM,

HINAM CROSS, DULVERTON. TA22 9QQ

**EXFORD CROQUET CLUB**

The Exford Croquet Club meet at 2pm every  
Tuesday till the end of October, at the QE 2  
Playing Field behind the church at Exford.

We are a friendly club who play for fun and  
companionship. You don't need to be 'sporty' or  
'athletic, so why not come and enjoy a game?

We'd love to see you.

*For more details contact:*

*Jackie Edwards 01643 831004*

*or Ines Collett 01643 831016*



FRIENDS OF  
DULVERTON  
LIBRARY

*The Friends of Dulverton Library  
meet in the library at 2.30pm on the  
first Thursday of each month.*

**Dulverton Action Group**

**Litter-picking 3rd Sunday every month:**

Sun 15<sup>th</sup> May – 10.30 & Sun 19<sup>th</sup> June – 10.30

Meet by the Heritage Centre

Everyone welcome!



From April till September, traders will be offering local produce and products at the new Dulverton Farmers Market which takes place every last Saturday of the month at the Lion Stables Car Park.

Visitors will be able to stock up on local meat, cakes, chocolates and much more as well as find lovingly homemade gifts, accessories and treats.

The market starts at 10am and runs till 4pm. There are a few spaces left for local traders who can contact [exmoor4all@gmail.com](mailto:exmoor4all@gmail.com) for a registration form or go to [www.dulvertonfarmersmarket.co.uk](http://www.dulvertonfarmersmarket.co.uk) and sign up online.

The dates for this year's Dulverton Farmers Market are:

30 April  
28 May  
25 June  
30 July  
27 August  
24 September

DULVERTON FARMERS MARKET

## Dulverton Farmers Market

10.00 - 16.00  
Last Saturday in  
April - Sept

Lion Car Park  
Dulverton  
TA22 9HB

[www.dulvertonfarmersmarket.co.uk](http://www.dulvertonfarmersmarket.co.uk)

Tel: 01398 323474

Find us on  
Facebook



**NHS** **MAX DAVISON OPTICIANS**  
**Somerset** **AT**  
**EXMOOR MEDICAL CENTRE**



Your Local, Independent Quality Optician

Why travel to Taunton, Minehead or Tiverton when we are on your doorstep?

Sight Test and Eye Examinations

NHS and Private Patients

Spectacles

Fashion, Classic and Budget Frames

Soft Contact Lenses

Children's Eyecare

Acute Community Eyecare Service

Glaucoma Screening

To book an appointment or if you have a query:

Phone: 01984 634140

email: [max.davison.ltd@googlemail.com](mailto:max.davison.ltd@googlemail.com)

website: [maxdavisonoptometry-watchet.co.uk](http://maxdavisonoptometry-watchet.co.uk)

BRISTOL OLD VIC THEATRE SCHOOL  
presents  
**A MIDSUMMER NIGHT'S  
DREAM**

By William Shakespeare  
Directed by Christopher Scott  
Designed by Mike Bearwish

Saturday June 4th, 7.30pm  
DULVERTON TOWN HALL



*'Love looks not with the eyes, but with the mind,  
And therefore is winged cupid painted blind,'*

Hermia loves Lysander and Helena loves Demetrius – but Demetrius is supposed to be marrying Hermia... When the Establishment tries to intervene, the lovers take refuge in the woods and wander into the midst of a dispute between the king and queen of the fairies.

Shakespeare put some of his most dazzling dramatic poetry at the service of this teasing, glittering, hilarious and amazingly inventive play, whose seriousness is only fleetingly glimpsed beneath its dreamlike surface.

A Midsummer Night's Dream is an ageless celebration of love consummated and fertile imaginings.

*Bristol Old Vic Theatre School, one of the most successful and well-respected drama schools in the UK, attracts the very best in young acting talent, guaranteeing you an experience of the highest quality.*

*Tickets available from Dulverton Post Office or contact Jan Ross - 01398 323818, janaross2003@yahoo.co.uk Adults £10, students in full time education £7. Organised by Dulverton Development Forum, supported by Dulverton's Community Budgeting Fund.*

## **HOBBS Electrical Contractors Ltd**



**\* Commercial \* Domestic \* Industrial \***

**Electrical Installation  
Rewires, new builds & renovations  
Maintenance & Repairs  
Inspection & Testing, Portable Appliance Testing**

**Dulverton: 01398 323518      Tiverton: 01884 253563**

Office: Unit 4, Exebridge Industrial Estate, Exebridge, Dulverton, Somerset, TA22 9BL

*Celebrating 25 years 1988 - 2013*



# Dulverton Town Hall

**Friday May 13 7.30pm**

**Dir: Richard Laxton**

**EFFIE GRAY (Cert 12A)**

**UK 2014**

**104 mins**

Based on the real-life scandal that shocked Victorian-era England, the film tells the story of Euphemia 'Effie' Gray. At 19, she married the prominent art historian and critic John Ruskin, but Ruskin refused to consummate their marriage. Lonely and frustrated, Effie is drawn to pre-Raphaelite painter John Everett Millais, and finds a friend and champion in Lady Elizabeth Eastlake. Within the lush environs of a world brimming with culture and high society and feverishly bucolic scenes of the Scottish countryside, Effie will defy the rules of Victorian society.

**Friday May 27 7.30pm**

**Dir: John Crowley**

**BROOKLYN (Cert 12A)**

**UK 2015**

**111 mins**

The profoundly moving story of Eilis Lacey (Saoirse Ronan), a young Irish immigrant navigating her way through 1950s Brooklyn. Lured by the promise of America, Eilis departs Ireland and the comfort of her mother's home for the shores of New York City. The initial shackles of homesickness quickly diminish as a fresh romance sweeps Eilis into the intoxicating charm of love, but her past catches up with her and she must choose between two countries and the lives that exist within. With a great cast, understated but powerful, a genuinely affecting, atmospheric, often funny and very accessible film, with three Oscar nominations.

**Friday June 10 7.30pm**

**Dir: Gustavo Ron**

**WAYS TO LIVE FOREVER (Cert PG13)**

**SPAIN / UK 2010**

**90mins**

Like most inquisitive boys, 12-year old Sam wants to know about UFOs, horror movies, ghosts and girls. Sam also has leukemia and, although the adults in his life don't want him to dwell on it, he wants to know everything about his disease and death, a possibility he might face. Together with his best friend, Felix, he embarks on a 'scientific investigation' with questions, observations, evidence, reflections and lists of all the things he wants to do someday, like breaking a world record, flying in a blimp, kissing a girl for the first time, and experiencing what it's like to be a teenager. In this poignant yet ultimately uplifting tale, Sam and his family face the immensity of an uncertain future with love, humour and a touch of the unexpected.

**Friday June 24 7.30pm**

**Dir: Sarah Gavron**

**SUFFRAGETTE (Cert 12A)**

**UK 2015**

**106 mins**

A drama that tracks the story of the foot soldiers of the early feminist movement, women who were forced underground to pursue a dangerous game of cat and mouse with an increasingly brutal State. These women were not primarily from the genteel educated classes, but working women who had seen peaceful protest achieve nothing. Radicalized and turning to violence as the only route to change, they were willing to lose everything in their fight for equality - their jobs, their homes, their children and their lives. Maud was one such foot soldier. The story of her fight for dignity is as gripping and visceral as any thriller, it is also heart-breaking and inspirational. Oscar nominees Carey Mulligan and Helena Bonham Carter and three-time Award winner Meryl Streep lead the cast.

*Tickets – Dulverton Films members £3, non-members £4.50, students, accompanied by an adult, £2.50. (Tickets may be available on the door – £4). Book in advance at Dulverton Post Office (Tel: 01398 323474) or email janaross2003@yahoo.co.uk. Bar open from 7pm.*

# NIMBLE FINGERS



**23 Fore Street, Dulverton Tel: 01398 323688**

Tapestry Kits & Loose Canvases - Elizabeth Bradley Kits  
Trammed Canvases

Cross Stitch Kits & Charts - Free Style Embroidery Kits

Anchor and DMC, Tapestry Wool & Stranded Cotton

Knitting Yarns - Fabrics

Accessories for Most Embroidery Needs

Wide Range of Haberdashery for Home Sewing and Clothes Repair

Ribbons, Tapes, Elastics, Bindings, etc - all sold by the metre

Buttons - sold singly

Silk Flowers, Floral Art Accessories

**OPEN - Monday to Saturday 10.15am - 5pm - closed Thursdays**



## John W Morgan Garden Services

Wooden Gates for Driveway,  
Farm, Garden and Garage.

**Fencing • Decking • Turf  
Pergolas • Arches**

Trees and Hedges cut  
and pruned

West Anstey 01398 341972  
Mobile: 07768 325432

[www.johnwmorgan.co.uk](http://www.johnwmorgan.co.uk)



## Diamond Shine

### Mobile Vehicle Valeting

**Professional  
Affordable Reliable**

**Your local vehicle  
cleaning company**

## 07896 154 176

**phil46yam@hotmail.com**



## LOOSEMORE ORGAN - EXETER CATHEDRAL



In January 2013 Harrison and Harrison dismantled the organ at Exeter Cathedral for major reconstruction of the internal layout, the purpose of which was to give better distribution of sound and to improve access for tuning and maintenance.

The Willis soundboards of 1891 were replaced, while the existing tonal scheme will be retained. To

help acoustics the solid and blank side panels to the right of the organ were removed by Hugh Harrison Conservation and new foliated panels were hand carved by Laurence Beckford of Dulverton and introduced at the end of reconstruction in 2015.



### LAURENCE J.W. BECKFORD MONUMENTAL MASON & CARVER



SLATE MEMORIAL



TRADITIONAL HAND  
CUT LETTERING



MEMORIAL BENCH

### HEADSTONES and MEMORIALS

Individually designed and hand carved in Dulverton

Refurbishment of existing headstones and memorials  
including re-fixing, painting and gilding

0772 4452 961

[www.beckfordsartworks.co.uk](http://www.beckfordsartworks.co.uk)

[laurence.beckford@sky.com](mailto:laurence.beckford@sky.com)

Full member of the Master Carvers Association (M.C.A)

## GONE FISHING



The weather in March was typical as the river opened for trout, cold easterly winds and no rain. However a few brave souls have been out on the DAA water and managed a couple of beautiful Brown trout. What we want now is mild south westerly winds and a dollop of rain to keep the rivers topped up.

Wimbleball Lake seems to have started the season well, catch rates look very good and the biggest fish I have heard of is 3.9lb. If anyone wants regular updates from Wimbleball contact Danny Ford [[ExmoorCW@swlakestrust.org.uk](mailto:ExmoorCW@swlakestrust.org.uk)] who will add you to his mailing list.

South West Fishing for Life, a charity based at Wimbleball for people who have or have had breast cancer, had a good day at Exe Valley Fisheries on the 13th March where 14 ladies caught 13 fish, then retired to the Anchor Inn for an excellent carvery and a few drinks.

The Dulverton Angling Association spent several days in the spring maintaining the banks and rivers on their beats at Pixton and Hollam. Most of the angling clubs that I know of spend most of their energy, and cash, looking after the water they use. Most rivers in the south west have been horribly neglected since WW2 and it is only the anglers who have done their best to bring them back to their former glory. Their work does improve the fishing but it also improves the environment as a whole for Voles, Kingfishers, Bats, Mayflies, Dippers and a whole host of other fauna that depend on clean rivers for their daily bread.

*Patrick Veale*

## Lance Nicholson Country Pursuits



9 High Street, Dulverton  
01398 323409

Shotguns, rifles,  
ammunition, clays etc.  
All your game fishing needs  
plus details of the  
Dulverton Angling Association.  
Large range of Barbour clothing.

[www.lance-nicholson.co.uk](http://www.lance-nicholson.co.uk)

## MALUMBY'S



37, High Street,  
Dulverton TA22 9DW

01398 323110



**Nikki Routledge**  
*Cert CBS*

**Human Bowen  
Practitioner**

Gentle and light therapy suitable for musculoskeletal pain, asthma and allergies, migraines, MS and other chronic conditions in adults, infant colic and bed-wetting or growing pains in children.

**Tel: 07890 968 115**  
**[www.mimi.me.uk](http://www.mimi.me.uk)**

# BRUSHFORD OPEN GARDENS

**St Nicholas Church** Sat & Sun  
**Flower Festival** 25/26<sup>th</sup>  
June

**Open Gardens Sunday 26<sup>th</sup>**

*Children's Art Trail*  
*Light Refreshments in Brushford*  
*Parish Hall*  
*Community Bus between Dulverton*  
*& Brushford*

Tickets available from 1st June  
Dulverton Post Office & The Tantivy.  
£4 in advance, £5 on the day.  
Children under 16 free

**In aid of St Nicholas Church**



**Mary Wilkinson**  
**McTIMONEY**

**Qualified Practitioner  
providing**

**GENTLE, WHOLE BODY TREATMENT  
for SPINAL RELATED PROBLEMS**

**Back pain, Sciatica  
Neck/Shoulder, Whiplash  
& Headaches**

**& ANIMALS**

**Horses, Dogs, Farm Animals, Cats**

**HIGHER PUTHAM  
WHEDDON CROSS  
TA24 7AS**

**Tel: 01643 841660**

## **ENJOY A HEALTHIER LIFESTYLE**

**Discover the Benefits of  
ALOE VERA with  
Forever Living Products**

The World Leader in  
the production of Aloe Vera

Our products contain 100%  
stabilised Aloe Vera gel

**Take a look at our exclusive  
range of Aloe Vera health and  
skincare products**



**Sandra Wilson**

Phone 01398 324687

E: [sandra.wilson@ylem.com](mailto:sandra.wilson@ylem.com)

Independent Distributor of  
Forever Living Products

Forever Living Products is a member of  
the Direct Selling Association Approval  
Code: Hoap0116



## MOREBATH VILLAGE HALL Forthcoming Events 2016



**Fun Quiz Night** - entrance £5 includes cold buffet. Children half price. BYO Bottle. Draw. For further details telephone Pauline on 01398 331666. Look forward to seeing you.

**Friday**  
**6<sup>th</sup> May**  
**7.30pm**

**Morebath Fete** - remember to put the date in your diary for this great event. All your favourite stalls and attractions. To book a table for Table Sales 'phone Pauline 01398 331666.

**Sunday**  
**3<sup>rd</sup> July**  
**2.00pm**

**Morebath Yoga - Monday 10.20-12 noon**

All abilities welcome. Session dates listed below.

Details: 01398 332334 or E.mail: rafton.mail@rockspray.co.uk

9 & 23 May 13 & 27 June 11 & 25 July 8 & 22 August

**Registered Charity No. 207013**

## WIMBLEBALL LAKE

## PLANNED EVENTS 2016



Date	Name of event	Type of event
4 <sup>th</sup> June	WRC regatta	Rowing Race ( <a href="http://www.wimbleballrc.co.uk">www.wimbleballrc.co.uk</a> )
5 <sup>th</sup> June	Sprint Triathlon	Freak Events standard distance triathlon: (1500m swim, 40km bike, 10km run) <a href="http://www.freakevents.co.uk">http://www.freakevents.co.uk</a>
26/6/15	IronMan	One of the worlds' toughest 70.3 triathlons
3 <sup>rd</sup> July	Wimbleball Open Day	Have a go on our high-ropes course, archery, canoeing & kayaking - £4 / session (£2 parking all day)
31st July	Full distance triathlon	X Man Events present this full distance triathlon (2.4 mile swim, 112 mile bike, 26 mile run) <a href="http://www.xmanevents.com">www.xmanevents.com</a>

Please call 01398 371460 to confirm the above planned events are going ahead / to book / for further details.

## Dulverton Abbeyfield Residential Home

***Providing Care and Companionship for the Elderly***

- Relaxed, friendly atmosphere, social activities.
- Quiet, convenient location, attractive garden.
- Excellent locally sourced food and local staff.
- Guest room, ideal for convalescence or short-term respite.

Please contact: House Manager, Frances Chanter 01398 324136



# RICHARD'S AQUATICS



Pond Building, Cleaning and  
Maintenance

Contact us for a free site visit  
and quote.

Phone: 07525 255741

[ponds@richardsaquatics.co.uk](mailto:ponds@richardsaquatics.co.uk)



Photo gallery and client feedback on  
[www.richardsaquatics.co.uk](http://www.richardsaquatics.co.uk)



All types  
of work  
undertaken

RENOVATION  
RESTORATION  
PRESERVATION

## Maintaining the Building Heritage of Exmoor



EXMOOR **BUILDERS**

T 01398 324 669 M 07831 252 276

e [info@exmoorbuilders.co.uk](mailto:info@exmoorbuilders.co.uk) w [www.exmoorbuilders.co.uk](http://www.exmoorbuilders.co.uk)

## FREE COURSES BRUSHFORD VILLAGE HALL

### Getting the most from your iPad/Android

Do you have an iPad/Android tablet and would like to get the most from it? Never used a tablet but would like to give it a go? If so, this course is for you. Suitable for the total beginner through to those with some experience of using a tablet. Bring along your own device or we can lend you one.

*Fridays 2 x sessions 10:00 – 1:00pm Starting 20/05/16*

*Course code AL115FRE23*

### Digital cameras – Don't just point and shoot

Do you have a camera and would love to learn how to get those perfect pictures? This two week course will show you how to take beautifully composed picture, how to download and then edit and print it. At the end of the course there will be an exhibition of your photos in the village hall. A must course for those budding photographers out there. If you don't own a camera we can supply one for you.

*Mondays 2 x sessions 10:00 – 1:00pm Starting 16/05/16*

*Course code AL115FRA23*

To book your place please telephone 0330 3327997 quoting the course code  
T: 0330 332 7997 E: [enquiries@sslcic.co.uk](mailto:enquiries@sslcic.co.uk)

# Carole King

LIFESTYLE & LIVING

STOCKISTS OF SHOES, FASHION

HOMEWARE & GIFTS

*"Whoever said money can't buy you  
happiness, doesn't know where to shop"*

[www.carole-king.co.uk](http://www.carole-king.co.uk)



**27 High Street  
Dulverton  
Somerset  
TA22 9DJ**

**Tel: 01398 324692**



PHOENIX CHIMNEYS



## Need your Chimney swept or thinking of having a Log Burner fitted?

It could be damaged or blocked with birds nests. If so it could be a fire risk and may lead to deadly Carbon Monoxide fumes leaking into your home. Now is the time to get it checked.

We cover North Devon, West Somerset, Exmoor, North Cornwall. We have full Public Liability Insurance and certificates are issued to confirm work.

### The services we provide are:

- Full sweeping service to all chimneys
- including Rayburns, Agas and Stanleys
- H.E.T.A.S. registered installer of Wood and Multifuel burners.
- Service and repairs
- Gas and smoke detectors supplied and fitted
- Chimney stack repairs
- Supply and Fit all types of Cows, Bird guards and chimney pots



Follow us on our Twitter and Facebook pages for more information and offers

[www.phoenix-chimneys.co.uk](http://www.phoenix-chimneys.co.uk)

01271 855543 / 07956 866593

## VINTAGE FILM CLUB

3 pm at Fishers Mead Community Centre  
2nd Wednesday every month:

**Wed 11th May**  
**Saturday Night &  
Sunday Morning**  
(1960)

*starring Albert Finney &  
Shirley Anne Field*

**Wed 8th June**  
**The Remains of  
the Day**  
(1993)

*starring Anthony Hopkins &  
Emma Thompson*

## WEDNESDAY 18th MAY



A guided tour of Cotleigh Brewery.  
£12 to include ploughman's lunch  
and some sampling of the amber nectar.

Cotleigh have been brewing in the West Country  
for over 35 years and have an extensive line up  
based around core brands, Tawny Owl,  
Commando Hoofing, Golden Seahawk, Buzzard  
and Barn Owl, all of which are available  
in cask and 500ml bottles.



**Advance booking essential.**  
**Contact Linda Hammond**  
**01398 323954**

Event organised by  
Dulverton Group Exmoor Society

## Judith Hayes Planning Town and Country Planning Consultancy

Specialising in planning  
applications and general  
advice relating to  
householder, equestrian, small  
renewables, agricultural,  
agricultural appraisals and  
enforcement issues

Contact: Judith Hayes BA (Hons) Mplan  
**JCH Planning Limited**  
Headgate Twitchen South Molton EX36 3LR  
T: 01598 740 440 or 07973 569 715  
E: [judith@jchplanning.co.uk](mailto:judith@jchplanning.co.uk)



## Exmoor BookBinding

01643 841116  
[sarah@the-burns.com](mailto:sarah@the-burns.com)

**Repairs & Restoration to  
all your favourite books.**



Albums, Folios  
Scrapbooks &  
Journals  
made to order.



## EDWORTHYS OVEN CLEANING

The Flat, Abbeyfield House, Dulverton,  
Somerset, TA22 9BY  
01398 323 696



Professional, Reliable, Friendly and  
Competitive Pricing.

For a free quotation, please call us on  
01398 323 696 and we will happily  
arrange a date and time to suit you.

## BOBCAT HIRE

*Skid Steer Loaders*  
*44" & 48" Wide*  
*Mini Diggers - 1.5, 4 & 5 Ton*  
*Available with Post Hole Auger*  
*& Rock Breaker/Post Banger*

### SELF DRIVE

*Competitive Rates*

**Tel: 01598 740406**  
**Mobile: 07970 914070**

Richard Smith  
Agricultural Engineer  
North Molton, Devon

## Colin's Property Improvements

*Est. 27years*

Painting, Carpentry, Building, Powerwashing, Drains,  
Chimney Sweeping, Plumbing, Mini Digger

Mobile: 07779 475324  
Home: 01398 324569

## *F* FRIENDSHIP & SONS FUNERAL DIRECTORS

*For the personal touches that matter*

Your Local Independent Funeral Directors offering personalised planning and  
compassionate care day and night

For professional advice and  
guidance please contact

**TELEPHONE: 01398 324590**

Golden Charter  
Later Life Planning

Office and Chapel of Rest at:

Unit 7, Barle Enterprise Centre, Dulverton, TA22 9BF - [www.friendshipandsons.co.uk](http://www.friendshipandsons.co.uk)



- Chapel of Rest
- Prepaid Plans
- Home Visits



Larchwood Cattery  
East Anstey EX16 9JL



Fully Licensed  
Purpose built  
Individual heated chalets  
Spacious outdoor runs

Tel: 01398 341 100

Email: hmetivier1@btinternet.com

[www.larchwoodcattery.co.uk](http://www.larchwoodcattery.co.uk)

## **STEVE BISHOP** **PEST CONTROL** **SERVICES**

*Covering West Somerset,  
North and Mid Devon*

*Control of rural,  
residential & commercial pest species*

*Qualified Pest Control  
Technician*

**01643 851267**

**07870 815400**

*For Fast, Friendly, Reliable Service*

Rats, Mice, Moles,  
Crawling and Flying Insects  
Inc. Wasps, Fleas, Bedbugs,  
Cockroaches, Flies,  
Bird control and proofing  
Electric Fly Killing Units Supplied

Certificate of Excellence  
2015 WINNER



## **Hinam Farm Tearoom**

Dulverton, Somerset TA22 9QQ

[www.hinamfarmexmoor.co.uk](http://www.hinamfarmexmoor.co.uk)

Tel: 01398 323405



### ***Cream Teas and Light Lunches***

***Stunning location on a real working  
farm in the Barle Valley***

***Tearoom open (till mid October)  
11am-5pm Wednesday to Sunday***

**Sunday Roast - Booking only  
All parties for all occasions**

Directions: From Dulverton head south out of Dulverton past Bridge Pub with the play area on your left, turn right signposted for Hawkridge, at top of hill turn right signposted for Hawkridge, follow for 2 miles, at next junction turn left after 100 yds you will see our signs.



## The Rotary Club of Exmoor welcomes prospective new members

We meet regularly at various locations in the Dulverton, Brushford and Bampton areas and speakers from a wide range of backgrounds talk to us to increase our understanding of the many charitable projects that may benefit from our support.

No doubt you will have seen us collecting with Santa's Sleigh at Christmas or organising the Exmoor Junior Challenge raising money for local and international charities. Maybe you have taken part in one of our quiz nights, or been to one of the Film and Meal nights at Dulverton Town Hall or remember the Canine Partners talk. All of them arranged by the Club and its supporters and we would love to be able to do more!

By far the largest support we give is to the Children's Hospice South West, and over the last 10 years we have raised over £90,000 for them. We have also

# Rotary

Club of Exmoor



raised over £30,000 to provide over 60 Shelterboxes for International Disaster Relief.

Being part of Rotary is more than just giving back to the community by volunteering. It is also about you bringing your skills, experience and enthusiasm to help it thrive, whilst making some great friends along the way and most of all having fun!

Want to know more? Want to come to a meeting as our guest?

Contact the Secretary of the Rotary Club of Exmoor, Peter Gibson at - [secretary@exmoor-rotary.org.uk](mailto:secretary@exmoor-rotary.org.uk)

Check out our web site at [www.exmoor-rotary.org.uk](http://www.exmoor-rotary.org.uk) to find out more about what we do.

## ***GRANT KELLY CARPENTRY & JOINERY***

*FULLY QUALIFIED CITY & GUILDS ADVANCED CRAFT  
OVER 20 YEARS EXPERIENCE*

*ALL ASPECTS OF CARPENTRY/JOINERY & BUILDING  
WORKS UNDERTAKEN*

*PURPOSE MADE HARDWOOD AND SOFTWOOD  
WINDOWS & DOORS*

*BESPOKE FURNITURE, KITCHENS, BEDROOMS, FITTED &  
FREESTANDING*

*LOFT CONVERSIONS, EXTENSIONS & ALTERATIONS  
STAIRCASES NEW & REFURBISHED*

*WOOD & LAMINATE FLOORING  
CUT ROOFS*

*FREE ESTIMATES*

*LOCAL, RELIABLE AND PROFESSIONAL SERVICE*

***[www.exmoorcarpenter.co.uk](http://www.exmoorcarpenter.co.uk)***

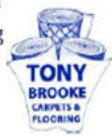
***Tel: 01643 851606    Mobile: 07730 525713***

***Townsend Cottages, Winsford, TA24 7JE***

## TONY BROOKE CARPETS & FLOORING

**CARPET ■ VINYL ■ FLOTEX  
NATURALS ■ SAFETY FLOORING  
CAMARO ■ RUGS ■ RUNNERS ■  
MATS & MORE!**

- Free estimating and planning
- Expert advice and fitting
- Over 25 years experience
- Home-choose service
- Re-stretches, re-adaptions and repairs
- Great deals on roll stock and remnants
- Already bought a carpet? We'll fit it!
- Price Promise - we won't be beaten



**Tel: 01984 632206**

Visit our showroom

Units 2 & 3, Roughmoor Industrial Estate,  
Williton, Somerset TA4 4RF  
[www.tonybrookecarpetsandflooring.co.uk](http://www.tonybrookecarpetsandflooring.co.uk)

## *The* **ALEXANDER TECHNIQUE**

Enjoy some gentle Alexander lessons to improve how you move, perform, look and feel.

Learn how you can alleviate pain, improve posture and cope with stress.

**Jenny Sampson MSTAT**

Teacher of the Alexander Technique

Holland House, Bridge Street  
Dulverton

**Tel: 01398 324 247**

[www.alexandertechnique.co.uk](http://www.alexandertechnique.co.uk)

## **Roger L Hammond Architectural Design Services**

Free initial consultation  
Feasibility studies and design advice  
Measured survey, detail drawings  
Planning and building regulations applications  
Extensions, barn conversions and new build  
Listed buildings and conservation work  
Specifications prepared  
Tendering, procurement and supervision  
Residential and commercial  
35 years experience

**Reasonable rates**

Tawny, 8 Great Meadow, Dulverton,  
Somerset, TA22 9DT

Tel/Fax: 01398 324644, mobile 0777 906 0969

e mail; [rl.hammond@btconnect.com](mailto:rl.hammond@btconnect.com)

website; [www.rlhammond-architecturaldesign.co.uk](http://www.rlhammond-architecturaldesign.co.uk)





## WORLD WAR 1 CENTENARY COMMEMORATIONS

### Charles Cording

This month we are remembering Charles Cording.

Charles was born in 1880 shortly after his father Thomas Cording, who was a Tailor in Back Street, had died.

His mother Sarah was considerably younger than her late husband and in 1881 she was working as a dressmaker and looking after her other children, Robert, Rodney, Susan, Rose Ann and Lucy.

In 1891 Sarah and her family were living with Charles Follett, a head saddler, whom she subsequently married.

By 1901 Charles Follett had died and Sarah was working at the Ironmongers in Fore Street with her son Charles being a Coachman.

In 1903 Charles married Beatrice Mary Callen and in 1911 they were living in Chapel Street with their daughter Ethel.

He joined the South Wales Borderers in 1915, went to Mesopotamia in 1916 and died of dysentery on 10th April 1916. He is buried in the Basra War Cemetery.

*Tony Sloley, Dulverton Heritage Centre*

### DULVERTON HERITAGE RAILWAY

The dreadnaught is now sitting in pride and place in the courtyard although we are trying to source a canvas sheet. Apparently, this was used exclusively at Dulverton Station due to the high rainfall and was fixed on a frame to the dreadnaught to help keep the goods dry on the platform. We would love to be able to complete the exhibit by adding this unique feature. Please do get in touch if you have a sheet of canvas or an old canvas tent that you no longer want! SC



### A. S. CLOCKS

Antique & Modern  
Clocks & Barometers

Repaired, Restored & Serviced  
Specialist in Longcase,  
(Grandfather), Bracket, Vienna  
& Carriage Clocks

Longcase clocks bought & sold  
Clocks set up after house move.

Free collection & delivery service

For helpful, no obligation advice  
& A FREE ESTIMATE

call

01643 705290

[asclocks@btinternet.com](mailto:asclocks@btinternet.com)

### WOODLOUSE LIMITED CONSERVATION

*"Recognised Specialists In Lime Rendering,  
Lime Plastering & Building Restoration"*

- Lime Plastering •
- Lime Rendering •
- Cob Work •
- Lime Pointing •
- Lime Washing •
- Stonework •

- Fireplace Restoration •
- Conservation Projects •

**01984 629131**  
**07788 810576**

*"Restoring properties throughout Somerset & Devon"*  
[www.woodlouseconservation.co.uk](http://www.woodlouseconservation.co.uk)



Come and join us for a magical evening at our Something for Everyone mid-summer concert on Saturday June 25th at Minehead Methodist Church, The Avenue. Starting at 7.30pm, the concert will feature the highly acclaimed Minehead Male Voice Choir and talented professional soprano Eloise Routledge. All proceeds will be donated to the West Somerset Advice Bureau, a local charity which provides a free independent advice service to residents across the whole of West Somerset - see website ([www.westsomersetadvice.org.uk](http://www.westsomersetadvice.org.uk)).

The Choir has a loyal following of supporters and always provides excellent entertainment with many of your favourite songs and more, ranging from shows, musicals and films to traditional, folk, spiritual and operetta. Founded in 2000, the Choir has 35 singing members and is very capably led by Jacqueline Butterworth, an experienced and highly accomplished Musical Director.

Eloise is an experienced opera singer and concert soloist, having performed in the UK and abroad with companies such as Garsington Opera, Holland Opera and Welsh National Opera, and in venues from Birmingham Symphony Hall, Nottingham Albert Hall and Queen Elizabeth Hall,

to Sydney Opera House and major concert halls across Australia as guest soloist on tour with Treorchy Male Voice Choir. Now based in Somerset, Eloise has been singing more locally at Bristol's Colston Hall and Wells Cathedral, and enjoys bringing a range of repertoire from opera to show greats and well known favourites to her audience.

It promises to be a Magical Evening of Song and an opportunity not to be missed!

Tickets are £7.50 and will be available from 1st May 2016 at the NatWest Bank, The Parade, Minehead and from reception at the West Somerset Advice Bureau, Market House Lane, Minehead. Other ticket outlets are being pursued and a limited number of tickets will be available at the door. Please telephone 01398 371248 for more information.

*The Minehead Male Voice Choir practises at the Alcombe Methodist Church on Monday evenings from 7.30pm to 9.30pm and a warm welcome is extended to new members. For details contact the secretary, Nick Webber on 01643 841725 or visit the Choir's website ([www.mineheadmalevoicechoir.org.uk](http://www.mineheadmalevoicechoir.org.uk)).*

## WEDNESDAY 15th JUNE

**A trip to Forde Abbey  
House and Gardens.  
£8.50 per person to visit both.**



Once described as "...the most perfect monastery in England", Forde Abbey is a beacon of elegant antiquity, set within the exquisite countryside of Dorset. Built almost 900 years ago by Cistercian monks, the Abbey still embodies the serenity and philosophy of the order who lived, prayed and farmed there.

Walk in the actual footsteps of the monks as they carried out their daily chores in these medieval surroundings. Experience the wonderful English Gothic setting created by the Prideaux family when they transformed the austere Abbey into a post-Renaissance palace. Forde Abbey is a stunning example of history preserved but not petrified, where the Kennard family continues to live and work and where visitors always receive a warm welcome.

**Advance booking essential.**

**Contact Linda Hammond**

**01398 323954**

**Event organised by  
Dulverton Group Exmoor Society**



Anstey WI is part of The Somerset Federation of 132 Institutes with 3,800 members. Meeting are normally held on the first Thursday of the month at 7.00pm in either West Anstey V H, Yeo Mill or East Anstey V H, Oldways End. New Members and Guests are welcome to join us.

## ANSTEY WI EVENTS

**June 2<sup>nd</sup> Talk by Mac McLaren  
'My Memories of Penlee Lifeboat  
Disaster' with Strawberry tea.**

*For more details: Cos Wood 01398 341472  
Anstey WI President*

# REIKI at HEADGATE HOLISTICS

**Promoting wholeness of mind,  
body and spirit**

**WHAT CAN REIKI DO FOR YOU,  
YOUR HORSE OR YOUR PET**

Reiki is a gentle and effective system of energy work which activates the body's own natural ability to heal itself, reducing stress, inducing a state of relaxation and a total feeling of wellbeing.

**Contact:**

Judy Advanced Usui Reiki Practitioner  
Headgate, Twicken, South Molton,  
Devon EX36 3LR  
Tel: 01598 740 481 or 07973 569 715  
[judith.hayes@virgin.net](mailto:judith.hayes@virgin.net)

**EXMOOR** **U3A**  
THE UNIVERSITY OF THE THIRD AGE

Meets on the last Wednesday of the month  
at Fishers Mead Community Centre  
(adjacent to Exmoor Medical Centre)  
10.15 for 10.30 am

**Meeting Wednesday 25th May  
'In the Service of Rogues & Royals'**

A talk by Roger Hurst

**Meeting Wednesday 30th June  
'History of Hestercombe House & Garden'**  
A talk by Dave Usher, former Head Gardener

Non-members welcome £2.00  
Further details : Yvonne Moorfoot  
01398 323529

## NORTH COAST SCAFFOLDING

**Friendly reliable service  
Competitive pricing  
Free quotes 7 days a week**

**07773 738315  
[northcoastscaff@outlook.com](mailto:northcoastscaff@outlook.com)**



## EXMOOR NATIONAL PARK NEWS

### ONE OF THE UK'S MOST SCENIC WALKING FESTIVALS IS NOW TAKING BOOKINGS

Walkers looking for an organized stroll in picturesque surroundings can now book guided walks on the website of the North Devon and Exmoor Walking Festival:

[www.exmoorwalkingfestival.co.uk](http://www.exmoorwalkingfestival.co.uk)

This year is the 20th walking festival, which has a wonderful history of organising nearly 800 guided walks enjoyed by over 4,500 walkers. This year's festival runs from Saturday 30 April to Saturday 7 May 2016 inclusive, and includes 32 guided walks from Croyde in North Devon to Watchet in West Somerset and down to Dulverton. The walks are led by enthusiastic locals, Exmoor rangers and wardens from the North Devon Area of Outstanding Natural Beauty.

Guided walks include a Wildlife walk around Braunton Burrows, Heritage walks around Dulverton; Walks around Lorna Doone Country, and an open moorland walk with a ranger from the Exmoor National Park Authority, and a walk on Lundy Island. Those looking to learn the art of orienteering can join a 'learn to map read' walk in the Webbers Post and Horner area.

## NEW PLAN FOR PARK

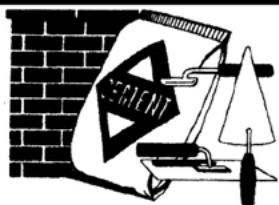
Every schoolchild in England will have the chance to visit our inspiring National Parks at each stage of their education under plans announced today by Environment Secretary Elizabeth Truss – as new figures reveal only 10% of schoolchildren currently have access to outdoor learning.

The new Plan for National Parks kickstarts a programme of activity to safeguard the future of these iconic landscapes, including by engaging young people throughout their education:

- from primary school, bringing more than 80,000 young people to visit National Parks and putting National Parks in the curriculum
- at secondary school, doubling the number of youth volunteers in National Parks as part of the National Citizen Service
- in their first steps to employment, developing a new apprenticeship standard and doubling apprenticeships in National Parks by 2020

With over half of the population in England living within an hour of a National Park, the plan aims to increase the diversity of visitors from the UK – as well as promoting these world-class cultural attractions to a global audience

*(continued on page 27)*



# N. H. Hopkins

## General Builder

### All Building Work Undertaken

### No Job Too Small

### (01398) 323687



(continued from page 26) through the GREAT campaign to drive international tourism. The Environment Secretary aims to build annual visitor numbers to 100 million, bringing around £440 million more to local businesses, adding to the £4 billion already generated by National Parks.

### EXMOOR TOURISM

Hundreds of people attended the recent Exmoor Tourism Conference at The Beach Hotel in Minehead, organised by Exmoor Tourism. More than 25 stalls showcased their tourism attractions while industry leaders talked about challenges and strategies at the day-long conference. Elke Winzer, the new Development Manager for Exmoor Tourism, said: "We are delighted that so many locals attended this event. With dwindling government funding the promotion of Exmoor as a tourist destination depends on all of us working together."

"Every local business, including plumbers, electricians and accountants, depend increasingly on the success of our tourism industry. The more people support Exmoor Tourism as members, the more we can do to promote our region. The overall economic success of the area is down to every single one of us - we can no longer rely on local authorities and government funded bodies to do it all."

Membership has been simplified, with special discounts being offered to those who join Exmoor Tourism at events.

Members are encouraged to join the Marketing Group to help shape the future of Exmoor.

For further information about upcoming events and how to get involved, contact Elke Winzer by email [development@exmoor.com](mailto:development@exmoor.com) or by calling 07881504863 or visit: [www.visit-exmoor.co.uk](http://www.visit-exmoor.co.uk)

### EXMOOR WILD WATCH 2016

2016 sees the launch of the third year of the Exmoor Wild Watch Survey. Exmoor Wild Watch is an opportunity to be part of a 'citizen science' project to find out more about some wild species particularly characteristic of Exmoor. Exmoor National Park Authority would love to hear from you if you see any of the 2016 Exmoor Wild Watch species. This year's list of wildlife stars include new species and old favourites. The full list is: barn owl, Daubenton's bat, glow worm, toad, string of sausages lichen, waxcap fungi, harbour porpoise, hedgehog, common blue butterfly, cuckoo, red kite and kestrel.

Submitting records is easy. Simply go online to [exmoor-nationalpark.gov.uk/wild-watch](http://exmoor-nationalpark.gov.uk/wild-watch) and click on the species you have seen, and let us know where and when you spotted it. There you will find more information on each species.

*(continued on page 28)*

# TIVERTON & TAUNTON FLOORING LTD

39 Bampton Street & William Street Warehouse  
Tiverton, Devon, EX16 6AH

## HAL WHITE

**Mobile: 07770 637 368**

# 01884 257 144

(continued from page 27)

Alternatively please call the National Park Centre at Lynmouth on 01598 752509 to let them have your Wild Watch records. All the National Park Centres have a handy spotter guide. To find more Exmoor Wild Watch events and training in 2016 please visit the Exmoor National Park website.

### **COPPICING**

Coppicing work is being undertaken by Barle Forestry in Culbone wood on the north coast of Exmoor National Park. Based on a detailed study by the Debois Landscape Survey Group, Exmoor National Park Authority, which owns and manages Culbone wood, has commissioned the work which is part of a scheme to reveal some of the historic views from the woodland.

Visitors to Culbone Wood today delight in the spectacular beauty of the natural woodlands cascading down the rocky shore and will no doubt marvel at the setting of England's smallest parish church hidden in a deep woodedcombe.

National Park Woodland officer Graeme McVittie said: "Some of the historic views are being opened up, the groups and lines of yews, strawberry trees and other conifers which carefully framed or revealed views will be reinstated and further work to restore the original path routes will be investigated.

### **HEADWATERS OF THE EXE LAUNCH**

Eighty-five people gathered to celebrate the launch of the Headwaters of the Exe project at Hawkridge Village Hall recently and the project team was delighted to welcome Stanley Johnson – former MEP, author, journalist, environmentalist and local landowner – to formally launch the project.

The Headwaters of the Exe project is working with farmers and land managers to ensure good water quality in the catchment of the River Exe. It is part of South West Water's Upstream Thinking programme. The project will run until 2020 and is funded by South West Water and Exmoor National Park Authority, with support from the Exmoor Hill Farming Network.

The Headwaters of the Exe project covers an area of 27,559 hectares and includes the upper Exe, the Rivers Barle, Quarme, Pulham, Haddeo and smaller tributaries, as well as Wimbleball Reservoir.

If you would like to get involved with the project please do not hesitate to get in touch with Bea Davis on 01398 322278 or [bdavis@exmoor-nationalpark.gov.uk](mailto:bdavis@exmoor-nationalpark.gov.uk) or Katherine Williams on 01643 841455 or [KWilliams@northdevonplus.co.uk](mailto:KWilliams@northdevonplus.co.uk).

## **EBB 'N' FLO DRAINAGE**

- 24Hr Emergency Drain Clearance
- CCTV Surveys
- Excavation and Repair
- 'No dig' Drain Re-lining
- Installations
- Pitch Fibre Repairs
- High Pressure Water Jetting

**0800 838 425 / 07875 977 930**

Office: 01398 323695 Email: [info@ebbnflo.net](mailto:info@ebbnflo.net) Website: [ebbnflo-drainage.co.uk](http://ebbnflo-drainage.co.uk)



# KFBS LTD

**ARCHITECTS & SURVEYORS**  
**PROJECT MANAGEMENT**  
**BUILDING REGULATIONS**  
**PLANNING & DEVELOPMENT**  
**BUILDING CONTRACTORS**



• RESIDENTIAL & DOMESTIC PROPERTIES • LISTED & AT RISK BUILDINGS  
• HOSPITALITY & LICENCED PREMISES • COUNTRY HOUSES & HOTELS  
• AGRICULTURAL/EQUESTRIAN • INDUSTRIAL & COMMERCIAL

**FROM INITIAL CONCEPT THROUGH TO FINAL COMPLETION**  
**FREE INITIAL ADVICE AND ESTIMATE**

## 01823 666 223

RIBA   RICS

[www.keithfarmer.co.uk](http://www.keithfarmer.co.uk)

## Acorn Antiques



Bespoke Upholstery – Decorative Antiques – Fine Art

Acorn Antiques, 39 High Street, Dulverton, TA229DW,  
01398 323286, [www.exmoorantiques.co.uk](http://www.exmoorantiques.co.uk)

The countdown to Simonsbath Festival 2016 has begun. May Day celebrations open the festival on Bank Holiday Monday May 2 at 2pm on Exford Village Green, with a fun-packed afternoon of maypole dancing and country dancing by children from Exford School with live music from the Exmoor Doodah Band!

This year the village will be joining in with and a host of other activities to celebrate the arrival of spring, with competitions between local pubs and clubs, a local produce stall, cream teas with home-made cakes and lots more.

May Day heralds a festival packed with a variety of events in Simonsbath, including classical, jazz, opera and world music concerts, walks, talks and an art exhibition.

Concerts include the male voices of Wells Cathedral Choir; the Kosmos Ensemble that does it all from classical, jazz and Jewish Klesma to Tango; a Zulu Choir; a cabaret evening of popular music from the 1920s and 40s and the knock-out Pop-up Opera with the Barber of Seville.

This year too there's a concert by new generation artists to encourage young talent, with the Jubilee Wind Ensemble who studied together at the prestigious Purcell School of Music.

Mid-week events include talks by popular local writer and author Simon Dawson and falconry expert Nigel Penfold, a new sampling and tasting event featuring local Exmoor producers Porlock Bay Oysters and Knighton Farm, Withypool. Wren Music will also be giving a concert of traditional songs selected to accompany a presentation of photographs by James Ravilious.

This year, depending on demand, the Exmoor community bus may be available from Dulverton to Simonsbath - and points in between - for the following concerts: the Vicars Choral of Wells Cathedral Choir on Friday May 6, Wren Music's A Random Melody featuring images by North Devon photographer James Ravilious on Wednesday May 25 and Music Deco's celebration of popular music from the 1920s to 40s on Saturday June 4.

You can find details of all the festival events on the website [www.simonsbathfestival.org.uk](http://www.simonsbathfestival.org.uk) and to receive a full colour printed programme please telephone 01643 831343.

*You can follow the festival on Facebook and Twitter and to become a Friend of Simonsbath Festival, and enjoy ticket discounts and priority booking while also supporting the festival, email [friends@simonsbathfestival.org.uk](mailto:friends@simonsbathfestival.org.uk) or just call 01643 831343.*

#### **Exmoor Community Bus**

*This year, depending on demand, the Exmoor community bus may be available to carry passengers from Dulverton to Simonsbath - and points in between - for the following concerts: the Vicars Choral of Wells Cathedral Choir on Friday May 6, Wren Music's A Random Melody featuring images by North Devon photographer James Ravilious on Wednesday May 25 and Music Deco's celebration of popular music from the 1920s to 40s on Saturday June 4.*

*If you would like to use the community bus for a return trip to these events, please telephone Sarah Buchanan on 01984 641706 at least THREE DAYS before the event you would like to go to. The cost of the return journey will be based on the numbers travelling, starting at £2.*



**Vehicle Graphics  
Shop Fascia Signage  
Banners  
Pavement Signs  
Stickers/Labels  
Interior Wall Art  
Horse Box/Equestrian  
Farm Signs**

**01398 322959**  
**[sales@kalesigns.co.uk](mailto:sales@kalesigns.co.uk)**



Monday 2 May – Friday 17 June

The fifth annual Simonsbath Festival Art Exhibition will take place at Boevey's Tea Rooms, the converted linyah of Simonsbath House on the turning into the hotel.

The work on show has been selected to reflect something of the quality of moorland life, the physical beauty of the landscape and the diversity of the culture, flora and fauna. The participating artists are all from the south west region and exhibit work in a variety of media, including oil, acrylic and watercolour paintings, photographs and prints.

This year's exhibition features framed and unframed work, all of which is for sale, as well as work by artists new to Simonsbath Festival, including drawings by Peter Randall-Page. There will be an additional annexe to the art exhibition, showing work by the successful photographer Steve Gunter, who won the

Countryfile winter landscape photo competition in 2015. His work is on show in Simonsbath House Hotel, so it is easy to take in both sites in one visit.

Admission to the exhibition at Boevey's and Simonsbath House Hotel is free during summer opening hours, from 10.30 am to 5pm daily.

*For more information*

*telephone Sandy Schott on 01643 831844 or*

*email [artexhibition@simonsbathfestival.org.uk](mailto:artexhibition@simonsbathfestival.org.uk)*



## Exmoor Plumbing

**Reliable Plumber no job too small**

**Radiators, cylinders, tanks, bathroom suites, taps, ballvalves, washers, showers, soilpipes, wastepipes, gutters.**

**All plumbing work covered**



**01984 639629 / 07970 632 114**

**SPECIAL OFFER!**  
**3 FOR 2**  
**ON CARPET**  
**CLEANING\***

**Chem-Dry**  
**Devon & Somerset.**

*Your local carpet and  
upholstery cleaners*

**Call us for a FREE no obligation quote**

**\* 01643 804544 \* 01398 341938 \***

[info@chemdrydands.co.uk](mailto:info@chemdrydands.co.uk)



\*Have three carpets cleaned and get the smallest one cleaned for free to the same specification. Terms and Conditions apply



# CHIMNEY SWEEP

NACS REGISTERED  
CLEAN AND EFFICIENT  
FULLY INSURED/ CERT ISSUED  
COWLS AND BIRDCARDS FITTED  
WOODBURNERS REFURBISHED  
POWER SWEEPING  
CCTV CAMERA SURVEYING

PHONE IAN

TEL : 01984 640893

MOBILE : 07502099323

## GERALD DALE

**General building work  
undertaken**

Landscape Gardening  
Stone Walling  
Patos



For friendly reliable service  
ring Gerald on  
01398 323 089  
07971 395 689  
E: lindadale0508@gmail.com

## WCI Ltd

Sewage Treatment Solutions

Septic tanks & Soakaways  
Sewage treatment plants  
Reed beds & EA Permits  
Rectification & servicing  
Home Buyer surveys

RING TODAY FOR YOUR FREE  
SITE VISIT AND QUOTATION

01984 623404

[www.reedbeds.com](http://www.reedbeds.com)

Family run with 27yrs experience

## Jamie Williams Painters & Decorators



*All aspects of  
Professional Painting & Decorating  
Exterior, Interior, Paper Hanging  
Coving and Wall Tiling*

**Tel: 01984 640181**

**Mob: 07766 917137**

*For a FREE estimate call Jamie*

*Email: [jamiethedecorator@yahoo.com](mailto:jamiethedecorator@yahoo.com)*



## **JOHN FRENCH**

(Plumbing and Home Improvements)

**Karslake House, Winsford,  
Minehead, TA24 7JE.**

All aspects of plumbing carried out at affordable rates.

Full Bathroom and Kitchen installation service.

*(Call for a free estimate)*

**No job too small.**

**Tel: 01643 851215**

## **BARLE HEATING**

**OIL FIRED CENTRAL HEATING  
SERVICING & REPAIRS**

**ALL MAKES OF BOILER  
AGAS & RAYBURNS**



REGISTERED & INSURED

**Hot Water Cylinders - Radiators - Valves  
Programmers - Cisterns**

**FRIENDLY, LOCAL SERVICE**

*Call for a chat to discuss your needs*

**DULVERTON 01398 323019**

# **Brett Wright Joinery**

**Personalised Hand-made Kitchens,  
designed and made in Dulverton**

**Bespoke Hardwood Joinery –  
staircases, furniture, doors**

**Conservation and Restoration for  
listed buildings**

**[www.brettwrightjoinery.com](http://www.brettwrightjoinery.com)**

**41a Northmoor Rd, Dulverton, TA22 9DH**

**01398 323211 / 07977 786342**

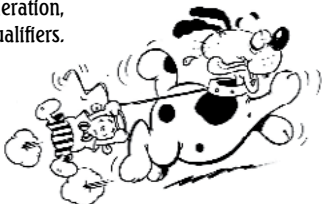


Exmoor Foxhounds Supporters Club

## Terrier, Lurcher and Kennel Club Companion & Family Dog Show Sunday 28th August 2016

Melcombe, Exford TA24 7LU

By kind permission of Mr & Mrs C Kirby  
Countryman's Weekly,  
National Working Terrier Federation,  
Stonelands Championship Qualifiers.  
Champion Terrier £50 prize  
Champion Lurcher £30 prize  
Terrier/Lurcher Racing  
Gun Dog Scurry/Dog Agility  
Miles Tea & Homemade  
Cakes Tent BBQ



Classes in all rings begin at 2.00pm. Gates open at 12.30pm. Parking Free!  
Entry fee £1 per entry in the ring. Gate cap - donation

Slee Blackwell  
Solicitors

Proudly supported by

Masons Kings



Schedule t: 01643 831 500 e: stay@stockleighexford.co.uk

[www.exford.org/events](http://www.exford.org/events)

**Don't forget!**

**The Exford Flower &  
Produce Show & Fete**

**Saturday  
27th August 2016**

**Live music on the  
village green with  
The Tone Valley Jazz  
Band from 1p.m.**

Show Marquee,  
Teas, Raffle, Stalls  
Bouncy Castle,  
Children's Sports  
Presentation of cups  
Auction of Produce  
Play and Picnic Area  
Contact for further  
information

**Anna Connell on  
01643 831634**

# Roy Hart Computers

## 01884 257288

[chris@rhcomp.co.uk](mailto:chris@rhcomp.co.uk)

computing without tears!

We can offer the **right** solution for the  
**first time & experienced** user

**Is your computer running slowly?**

Contact **Chris** for a MOT & service to keep it in tip top condition

**New Systems ● Upgrades ● Virus & Problem Solving**

*Wifi, Broadband and Smart TV connections*

**FAMILY FIRM SUPPORTING COMPUTERS IN YOUR HOME SINCE 1981**



# ANSTEY VILLAGE FETE SATURDAY 18TH JUNE

\*BAR  
\*DOG SHOW  
\*PONY RIDES  
\*TUG OF WAR  
\*HOG ROAST  
\*TEA AND CAKE  
\*BOUNCY CASTLE  
\*AND MANY  
MORE THINGS TO  
ENJOY

FROUDE RUN  
FOR KIDS AND  
ADULTS

NEW THIS YEAR  
EVENING REVEL  
MUSIC FOR  
EVERYONE TO ENJOY  
STARTS AFTER THE  
RUN

Imagine a company that analyses your IT requirements, then delivers cost effective, reliable and complete business solutions on time and to budget...

Ylem turns imagination into reality. We have over 30 years experience in delivering Intelligent IT solutions to the local business community.

**YLEM**  
Intelligent IT

- SOFTWARE
- HARDWARE
- CONSULTANCY
- INSTALL
- TRAINING
- SUPPORT

Tel: 01398 322000, Email: [info@ylem.com](mailto:info@ylem.com), Web: [www.ylem.com](http://www.ylem.com)



# autofinesse

The automotive cosmetic repair specialists

## **... OOPS ! Have you scuffed, scratched, dented or scraped your car lately ?**

Typically 50% cheaper than  
traditional body shop repairs

No VAT to pay

10 + Years main dealer experience

High quality, cost effective,  
convenient service

Free estimates

Same day turn around in most cases

Insurance work welcome

**Barnsclose Industrial Estate  
Dulverton, Somerset TA22 9EA**

**Tel: 07497 889118**

**Email: [auto.finesse@outlook.com](mailto:auto.finesse@outlook.com)**



**autofinesse**  
The automotive cosmetic  
repair specialists



**AUTOMOTIVE  
TECHNICIAN  
ACCREDITATION**





## Edworthys Carpet & Window Cleaning

- Gutters ■ Facias
- Roof Cleaning
- Upholstery

Please contact Tom for a free quotation.

**Friendly, reliable and very professional**

**01398 323696 - 07984 057527**



## OIL BURNER SERVICE MAINTENANCE & REPAIRS

### PAUL JONES EXFORD



*with over 15 years experience*  
OFFERING YOU THE BEST QUALITY  
OIL BURNER SERVICING AROUND

**COMPETITIVE RATES  
BEST QUALITY SERVICE  
ALL REPAIRS UNDERTAKEN**

**Call now on 01643 831384  
or 07811 600694**

## REGIS ROOFING & BUILDING

- Extensions
- Loft Conversions
- Painting & Decorating
- Timber Frame Structures
- Kitchens & Bathrooms
- Roof & Chimney Repairs

**Phone Jason on  
01643 705540**



## THREE LITTLE PIGS

Some of you may remember a fire which destroyed a house in Dulverton way back in 1992. No one was hurt, fortunately, and the house was re-built by the owners the following year.

Justin and Linda Tyers, went on to build a 15 ton sailing boat, as amateurs, starting with the trees. For seven years they sailed to Celtic places between Brittany, Ireland and Scotland, eventually settling on a Hebridean Island.

Well - now they're back, and if anything they're even more unconventional that when they left us. As beneficiaries of the Emoor Park (and others) local-housing enabling strategies, From March they will be self-building an attractive Straw Bale/Timber Frame house at Exton. They invite anyone interested in doing the same to get in touch for help information or encouragement, and issue by issue we'll be following they're progress!



Justin is supported by ALBA | CHRUTHACHAIL

[justintyers.co.uk](http://justintyers.co.uk)

## Paul Priest LIME PLASTERING & STONework

- \* Internal & External Plastering
- \* Traditional & Modern Plastering
- \* Repairs & Complete Work
- \* Bespoke Stone Fireplaces
- \* Stone Walls, both Dry & Mortared
- \* Chimneys \* Pointing \* Stone/Tiled Floors
- \* Repairs or New Build \* Solid Fuel Stove Fitting

***ALL GENERAL BUILDING, PLASTERING &  
LANDSCAPING WORK UNDERTAKEN  
COMPETITIVE RATES***

**Contact Paul: 07870 454003  
[www.priestplasteringstonework.co.uk](http://www.priestplasteringstonework.co.uk)**





# Voices of Exmoor

## Summer Concert



# Songs from the Shows



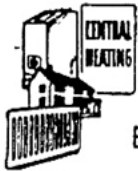
**Friday 1st July 2016**

**Saturday 2nd July 2016**

**at 7.30 p.m. in Dulverton Town Hall**

**Tickets £5.00 from The Tantivy, Dulverton**

**IN SUPPORT OF ST MARGARET'S HOSPICE**



## Chris Flay Plumbing & Heating Engineer

**For Quality Workmanship  
and Guaranteed Success**

**RAYBURN**

**Boiler Servicing & Maintenance**

**Rayburn Sales & Service**

**STANLEY**

**Gas, Oil and Solid Fuel Installations**

**Oil Tank Replacement - 24 Hour Service**

**Domestic or New Housing Enquiries Welcome**

**AGA**

**25 YEARS  
EXPERIENCE**



**OIL BURNER CONVERSION**

**NETHER STOWEY (01278) 732 732**

**The Arches, South Lane, Nether Stowey, Bridgwater**



**New Build  
Extensions  
Renovations  
Loft Conversions**

**Tel: 01398 323789**

**Mobile: 07837 729484**

**Email: [mikecottrell20@gmail.com](mailto:mikecottrell20@gmail.com)**

## **Exmoor Landscaping**



Local and reliable

Clearance and ground  
works

Stonewalling and steps

Patios and ponds

Fencing and treework

Turf supplied and laid



**Tel: 01984 640530**

**or Mobile: 07974 141790**

**or visit [www.exmoorlandscaping.co.uk](http://www.exmoorlandscaping.co.uk)**



## Exmoor StarGazers

Observe with us in Europe's first dark sky reserve

Exmoor StarGazers are a group of astronomy enthusiasts based on and around Exmoor. We're a bit different to many astronomy societies in that whilst some of our members do have advanced telescopes, many others simply enjoy the beauty of the dark starry skies of our region. In a sense, we're the Exmoor Sky Appreciation Society/Social-Club and we hold friendly meetings at a variety of pubs around the Park. The best way to catch us is via our Facebook and Twitter pages below.

The highlight of the night sky at the moment is the planet Jupiter. If you head outside just after it's properly dark (around 9.30) and look to the south about 45° up, you'll see it. It's by far the brightest object in that part of the sky. If you have any kind of telescope you'll be able to see Jupiter's biggest four moons in a line around the planet. Even a decent pair of binoculars should show them. Try putting your binoculars on your camera tripod or on a gatepost to steady your hands so that you can get a better view.

If you do manage to spot Jupiter's little moons you're

following in the footsteps of the famous Renaissance astronomer Galileo Galilei who first discovered them around 1610. It was the first time in history that we realised that planets other than the Earth had moons and it fundamentally changed the way we see the universe.

Facebook: [www.facebook.com/ExmoorStargazers](http://www.facebook.com/ExmoorStargazers)

Website: <http://www.exmoorstargazers.co.uk/>

Twitter: <https://twitter.com/ExmoorSGazers>

Phone: 01398 324167



*Jupiter and its moons sketched by one of our members in Minehead through a moderately large amateur telescope.*

### KEITH JONES

#### AGS Home Improvements



Local consultant for over 30 years  
giving specialist advice for  
people like you



Supplying  
**UPVC WINDOWS, DOORS, PATIO DOORS,  
CONSERVATORIES, PORCHES AND EXTERNALS**

Most products available in  
**WHITE, MAHOGANY OR GOLDEN OAK**  
**ALSO OTHER TRADITIONAL COLOURS AVAILABLE**

1000's of installations locally  
Contact Keith for friendly advice on all your requirements.

**01643 831568**

**or e-mail [lindamjones@mypostoffice.co.uk](mailto:lindamjones@mypostoffice.co.uk)**

Daytime or Evening.

# Coutts

Event Hire Services

Wedding & Event Hire

Chairs

Tables

Catering Equipment

Hog Roast Machine

Vintage Props

Tel: 07847 51 58 59



*A bespoke hairdressing salon,  
creating naturally beautiful  
hair.*

Contact Ruth and Lucy:  
01398 323784

## SEW 'N' SEW

*Curtains & Soft  
Furnishings*



Quality hand sewn made to  
measure curtains, blinds, pelmets,  
cushions, bedspreads & bed  
valances

Curtains adapted and altered to fit  
Clothing alterations

Curtain poles, tracks, venetian and  
roller blinds

Range of Fabrics available

**Belinda Hopkins**

01398

10 Barnsclose,  
Dulverton, Somerset,  
TA22 9DZ

324 053

sew\_n\_sew@hotmail.co.uk

## Woodwise Joinery

Specialist in  
Timber Craftsmanship

- Purpose made Windows ▪
- Double & Single Glazing Doors ▪
- Staircases ▪
- Listed Building Work ▪
- All types of Hardwood & Softwood ▪

Tel: (01398) 331231  
Station Rd, Bampton, EX16 9NG  
Email: [info@woodwisejoinerydevon.co.uk](mailto:info@woodwisejoinerydevon.co.uk)  
[www.woodwisejoinerydevon.co.uk](http://www.woodwisejoinerydevon.co.uk)

**PARISH AND TOWN COUNCILS**

Brompton Regis P.C: Ms J Scott	brpcclerk@gmail.com	01398 371464
Brushford P.C: Clerk: Clive Knight,	cliveknight@me.com	01398 331917
Cutcombe P.C: Clerk: Marlene P Allinson	cutcombeclerk@btinternet.com	01643 708810
Dulverton T.C: Sec: Miss A. Rose	clerk@dulvertontowncouncil.co.uk	01398 324561
East Anstey PC: Clerk: Mrs Jill Larcombe	eastansteypc@yahoo.co.uk	01884 252647
Exford P.C: Clerk: Jane Laycock	parishclerk@exford.org	01643 831067
Exmoor P.C: Clerk: Verity Vigars	exmoorparishcouncil@gmail.com	01643 831511
Exton P.C: Clerk: Andrew Moore	clerk@extonparishcouncil.co.uk	01643 851694
Upton P.C: Clerk: Mrs P Purvis	uptonparishclerk@hotmail.co.uk	01398 371548
Winsford P.C: Clerk: Verity Vigars	winsfordparishcouncil@gmail.com	01643 831511
Withypool & Hawkridge P.C: Clerk: Verity Vigars	withypoolhawkridgeparishclerk@gmail.com	01643 831511

**LOCAL CHURCHES AND CHAPEL CONTACT NUMBERS**

All Saints Church, Dulverton: Rector Andrew Thomas	01398 323018
Brompton Regis with Withiel Florey, Upton and Skilgate: Rector Andrew Thomas	01398 323018
Brushford: Rector Andrew Thomas	01398 323018
Exmoor Benefice: The Reverend David Weir, The Rectory, Exford, TA24 7LX	01643 831330
Catholic Church: Priest: Father Michael	01643 702201
Dulverton Congregational Church, Chapel St: Minister:	01398 323744
The Traditional Anglican Church: Loxbear, Priest Reverend Aird	01769 581042
Exmoor Benefice Choir: Mrs B. Staples	01643 851396

**ARTS**

Dulverton Art Group: Sec: Mrs G Rose, 2 Stable Mews, The Square, Witheridge	01884 860495
Dulverton Camera Club: Sec: Peter Main, 4 Valley View, Morebath, Tiverton, EX16	01398 331556
Dulverton Players: Chair: Les Silverlock	01398 341850

**SPORTS CLUBS**

Anstey Short Mat Bowls: Chris Dale	01398 341615
Bridgetown Cricket: Sec: Mr. D. Sherring, Mid-Wicket, Bridgetown, Dulverton. TA22 9JN administrator@bridgetowncc.co.uk	
Brushford Short Mat Bowling: Sec: Mr M I Browring, Brushford, Dulverton	01398 324162
Cutcombe Cricket: Sec: Mrs Maria Adams, 1 The Beeches, Wheddon Cross	01643 841036
Dulverton Angling Assn: c/o Pat Veale, 9 High St., Dulverton, TA22 9HB	01398 323409
Dulverton Badminton Club: sec Rachel Gliddon	01398 323831
Dulverton Cricket Club: Robert Dubery	01398 323474
Dulverton Cricket Club, Colts: Mrs Christine Dubery	01398 323474
Dulverton & District Tennis Club: Yvonne Moorfoot, 3 Lamb Back, Dulverton	01398 323529
Dulverton & Exmoor Squash Club: Membership Sec: Chris Winter. chriscwin@aol.com	07710 046107
Dulverton Jnr. F.C: Sec: Mrs Christine Dubery	01398 323474
Dulverton Netball Club: Sec Lindsay Smith, 25, Nicholas Close, Brushford	01398 323834
Dulverton Snooker: Sec: Mr. D. Bodger, 39 Fishers Mead, Dulverton, TA22 9EN	01398 323899
Dulverton Sports and Social: Chair: Carl Hooper	01398 324494
Dulverton Sportsfield Management: Adrian Smith	01398 323834
Dulverton Senior Table Tennis: Richard Archer	01398 324160
Dulverton Town F.C: Sec: Mr. J. Atkins, 1 Exebridge, Dulverton. TA22 9AY	01398 323787
Moorland Hall Sports: info@wheddoncross.org.uk	
Tai Chi: Instr. Andrew Blabey RITCUGB andrewbee@tiscali.co.uk	01398 332104
Wimbleball Fly Fishers: enquiries@fishingthewest.co.uk	

**PRE-SCHOOL GROUPS**

All Saints School & Nursery: Head: Mr J Weedon	01398 323231 & 01398 323223
Anstey Parent and Toddlers Group: Jodie Thomas	01398 341845



**SCHOOLS**

All Saints C of E School - Fishers Mead TA22 9EN	01398 323231
Cutcombe C of E First School - Wheddon Cross, TA24 7DZ	01643 841462
Dulverton Middle School - Barns Close West, TA22 9EE	01398 323223
Brompton Regis Toddlers: Mrs. S. Julian, Court Place Farm, Skilgate	01398 331031
Dulverton Children's Centre - All Saints School, Fishers Mead TA22 9EN	01643 700030
Dulverton Family and Toddlers Group: Wendy Gunn	01398 324395
East Anstey Primary School: - East Anstey, Tiverton, Devon, EX16 9JP	01398 341369
Little Owls Nursery - All Saints School, Fishers Mead TA22 9EN	01398 324360
Wheddon Cross Under 5's: Supervisor: Mrs. S. Matravets, Shute Cl., Cutcombe	01643 841008

**WOMEN'S ORGANISATIONS**

Anstey W.I. President: Mrs. C Wood	01398 341472
Brompton Regis W.I. Sec: Mrs. P. Beecham, Rose Cottage, Brompton Regis	01398 371407
Brushford Ladies' Group: Sec: Mrs J Weaver, 1 Valentines, Dulverton, TA22 9ED	01398 323392
Cutcombe & District M.U: President, Pam Anson	01643 851616
Cutcombe & District W.I. Mrs. Pam Anson	01643 851616
Dulverton & Brushford M. U.: Mrs A. Gregory, 22 Jury Road, Dulverton, TA22 9DU	01398 323587
Exford Moorhens: Chairman: Mrs. I. Collett	01643 831016

**YOUTH ORGANISATIONS AND ACTIVITIES**

Bampton Scouts/Cubs/Beaver748s: Tony Weiss	01398 331901
Dulverton & District Young People's Project: Coordinator: Ms Jude Atkins	01398 324169
Dulverton Ballet: Mrs Wightmore, Flat 3, Easter House, St. Andrews St. Tiverton	01884 253999
Exmoor Community Youth Club: Organiser Laura Tasker, Fridays 6 - 8 pm	01643 831125

**OTHERS**

Abbeyfield House	01398 324136
Brushford Voluntary Lift Scheme: Chair: W. Gillison	07528 326880
Brushford Luncheon Club: Treasurer: Michael Willison	01398 324509
Care Direct for help and advice. <a href="http://www.somerset.gov.uk">www.somerset.gov.uk</a>	0300 1232224
Cutcombe Flower & Produce Show: Sue White	01643 841142
Dulverton Action Group: Magdalena Harding	01398 323 785
Dulverton & Bampton Luncheon Club (Ex-Probus): Organiser: Terence Dapp <a href="mailto:terrydapp@aol.com">terrydapp@aol.com</a>	01398 332252
Dulverton & District Civic Soc: Sec: Mrs. J. Ross, Parklands, Jury Rd., Dulverton	01398 323818
Dulverton & Southern. Exmoor Twinning: Chair: Steve Ford, Dulverton	01398 323016
Dulverton Bridge Club: Sec. Brian Hughes, <a href="http://www.Bridgewebs.com/dulverton">www.Bridgewebs.com/dulverton</a>	01398 331219
Dulverton Dance:	01398 341850
Dulverton Ballroom Dance: Sec: Mrs Christine Dubery	01398 323474
Dulverton Development Forum: Sec: Mrs J. Ross	01398 323818
Dulverton Films: Jan Ross	01398 323818
Dulverton Fellowship for Mental Health: Marion Silverlock	01398 341850
Dulverton Gardening Club: Roger Hammond	01398 323954
Dulverton Group Exmoor Society: Sec: Dr Ken Mills	01398 331482
Dulverton Vintage Films: Magdalena Harding	01398 323785
Exford Croquet Club: Chair: Connie Heywood	01398 341556
Exmoor Patient Group: Chair: Sandra Wilson, W Nightcott, Dulverton TA22 9RT	01398 324687
Exmoor BeeKeepers Association: Sec: Caroline Ralph	01643 851622
Exmoor Community Bus Assn: Sec: Mr. D. Perry, 4 Bath Meadow Drive, Dulverton	01398 324059
Exmoor Pony Centre: Ashwick, Dulverton, Somerset, TA22 9QE	01398 323093
Exmoor Pony Society: Sec: Sue McGeever, Woodmans, Brithem Bottom Cullompton, Devon EX15 1NB	01884 839930
Exmoor Rotary Club: Humphrey Berridge (PRO), Station Hse, Luke St, Bampton	01398 332324
Royal British Legion Dulverton: Peter Donnelly	01398 323030
Tiverton Model Aero Club: Sec: Mr. P Veale, 9 High St., Dulverton TA22 9HB	01398 323409
USA Exmoor: Yvonne Moorfoot, 3 Lamb Back, Dulverton	01398 323529
West Somerset Advice Bureau: Dulverton Medical Centre, Tues 10-12	01643 704624



**Home Reared  
Free Range  
Pork, Lamb & Beef**

Small beef box 7-8kgs

1/2 pig including sausages 22kgs

1/2 lamb box 9-10kgs

or try a mixed box  
packaged ready for  
your freezer

Local delivery or collection

Give us a ring on:  
01643 851298



**A family run  
shop with a  
big Exmoor  
welcome!**



Local produce, fine foods,  
organic fruit & veg, organic bread,  
cakes & pies. Tea room.

Delicious freshly prepared food to  
take away. Have you tried our ever  
popular breakfast baguette?

Open from 8.30am for coffee.

Fresh meat, bacon, sausages &  
ham supplied by Kendle Farm

5a Bridge Street,  
Dulverton TA22 9HJ  
01398 323878

Email [sales@kendlefarm.co.uk](mailto:sales@kendlefarm.co.uk)  
Kendle Farm, Exton, Dulverton TA22 9LA

Find us opposite the Bridge Inn

Folding Chairs/Table Hire

Licensed Waste Carrier

House Clearance

Seasoned Logs

Bric a Brac

Valuations

Antiques

*Brushford*  
**Bizarre**

**Tony Skilton**

Carnarvon Arms Garage

Brushford TA22 9AG

Tel: 01398 324 150

Mob: 07802 357 962

Email: [taskilton@aol.com](mailto:taskilton@aol.com)

# MARKS DOMESTIC REPAIRS

## For all Washing Machine and Tumble Dryer Repairs

AEG

BEKO

BOSCH

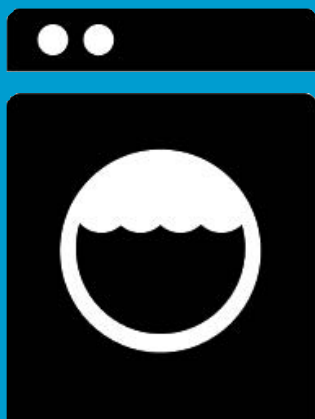
CREDA

HOOVER

INDESIT

SIEMANS

WHIRLPOOL



ARISTON

BENDIX

CANDY

ELECTROLUX

HOTPOINT

SERVIS

WHITEKNIGHT

ZANUSSI

New washing machine installations and  
disposal of old washing machines

We offer a selection of  
**QUALITY RECONDITIONED MACHINES**

Delivery available

All work guaranteed

[info.mdr@btinternet.com](mailto:info.mdr@btinternet.com)

[www.marksdomesticrepairs.co.uk](http://www.marksdomesticrepairs.co.uk)

FOR FREE ADVICE

01984 629333 or 01823 283338

01278 495044 or 01643 475005