

# EXMOOR NEWS

JULY/AUGUST 2016

FREE

Bridgetown  
Brompton Regis  
Brushford  
Bury  
Cutcombe  
Dulverton  
East Anstey  
Exebridge  
Exford  
Exton  
Hawkrige  
Luxborough  
Skilgate  
Simonsbath  
Upton  
Wheddon Cross  
Winsford  
Withypool

Bringing community news across southern Exmoor





The  
**Tantivy**  
SINCE 1939  
Celebrating 75 years

**Traditional Shop  
Café & Deli**

Delicious Local Food and Drink.  
Confectionery, Gifts and Cards.  
Wines, Spirits, Ales and Ciders -  
Exmoor Gin.  
And Much More!

Open 7 days a week  
Fore Street, Dulverton T: 01398 323465  
[www.tantivyexmoor.co.uk](http://www.tantivyexmoor.co.uk)

# EXMOOR NEWS

## DULVERTON & SOUTHERN EXMOOR

Our July and August issue has come around so quickly, and, with the spring having sprung and summer upon us we look forward to spending time in and around our wonderful area of Exmoor. We are so fortunate to have the moor, coastline and easy to reach towns - we have it all.

If you have any stories you would like to share please email us. We have had some feedback from our advertisers who acknowledge you have let them know you found their business via our magazine. Thank you. This is so important as it means we can keep providing our magazine free to you. We wish all our readers an enjoyable summer.

*Best wishes*

*Ceri Keene and Claire Savill*

Contact Details E: [exmoornews@gmail.com](mailto:exmoornews@gmail.com) T: 07497 914441 W: [www.exmoornews.co.uk](http://www.exmoornews.co.uk)

Post: The Old Stores, Brushford, Dulverton, Somerset, TA22 9AH

The deadline for the September/October issue of the Exmoor News is

**Thursday 4th August 2016**

Printed by Maslands, Exeter

Cover photo: © Alan Jones, Exmoor Photographers



APRIL		
	DULVERTON	WINSFORD
Rainfall total	36.1mm	35.6 mm
Wettest Day		5.6mm, 22 <sup>nd</sup>
MAY		
Rainfall total	51.6mm	55.5mm
Wettest Day		11.8mm, 20 <sup>th</sup>
Thanks to John Gregory and Ann Le Bas		

Whilst every effort is made to ensure the accuracy of the information in this booklet, no liability can be accepted by the editors and publishers for any loss, damage or injury caused by errors in, or omissions from, the information given. Please also note that in the publication of trade adverts, the editors do not guarantee the quality of services provided by any of these advertisers. The editors reserve the right to decline to publish any item and to amend or shorten material.

## TONY BROOKE CARPETS & FLOORING

**CARPET ■ VINYL ■ FLOTEX  
NATURALS ■ SAFETY FLOORING  
CAMARO ■ RUGS ■ RUNNERS ■  
MATS & MORE!**

- Free estimating and planning
- Expert advice and fitting
- Over 25 years experience
- Home-choose service
- Re-stretches, re-adaptions and repairs
- Great deals on roll stock and remnants
- Already bought a carpet? We'll fit it!
- Price Promise - we won't be beaten



**Tel: 01984 632206**

Visit our showroom

Units 2 & 3, Roughmoor Industrial Estate,  
Williton, Somerset TA4 4RF  
[www.tonybrookecarpetsandflooring.co.uk](http://www.tonybrookecarpetsandflooring.co.uk)

## *The* **ALEXANDER TECHNIQUE**

Enjoy some gentle Alexander lessons to improve how you move, perform, look and feel.

Learn how you can alleviate pain, improve posture and cope with stress.

**Jenny Sampson MSTAT**

Teacher of the Alexander Technique

Holland House, Bridge Street  
Dulverton

**Tel: 01398 324 247**

[www.alexandertechnique.co.uk](http://www.alexandertechnique.co.uk)

## **Roger L Hammond Architectural Design Services**

Free initial consultation  
Feasibility studies and design advice  
Measured survey, detail drawings  
Planning and building regulations applications  
Extensions, barn conversions and new build  
Listed buildings and conservation work  
Specifications prepared  
Tendering, procurement and supervision  
Residential and commercial  
35 years experience

**Reasonable rates**

Tawny, 8 Great Meadow, Dulverton,  
Somerset, TA22 9DT  
Tel/Fax: 01398 324644, mobile 0777 906 0969  
e mail; [rl.hammond@btconnect.com](mailto:rl.hammond@btconnect.com)  
website; [www.rlhammond-architecturaldesign.co.uk](http://www.rlhammond-architecturaldesign.co.uk)



## International Horse Show

We have 15 seats left for a group rate booking for a day trip to the London International Horse Show Olympia matinee performance on Monday 19th December 2016.

The Olympia seat price is £40.90.

Plus Ridlers 49-seat executive coach transport Exmoor return price £25.

If you are interested please register as soon as possible.

Carole Woods 01643 831151 or Claire Woods 07880 439089 or

Gwenda Bassett 07900 837183 for further information.

## BRUSHFORD PARISH HALL

### Get to know your neighbours

Whether you've been in the Brushford area 5 weeks or 5 years, the way to feel you really belong is to join in.

**Brushford Parish Hall** is the place where the action is: it hosts all the classes and clubs you enjoy.

Right now we need some more people to help with:  
Fundraising – a few hours at the Bar or in the kitchen –  
selling tickets for events – sharing your brilliant ideas  
Running the show – handy person – committee member  
with business experience – secretary to the Trustees

[www.brushfordparishhall.org.uk](http://www.brushfordparishhall.org.uk)

Call Caroline or Ceri on 07941 139846

## JAZZ ON THE MOOR 2016

**Friday 2nd September**

**All Saints Church, Dulverton**

**7.30pm**

## LE JAZZ

Andrew Daldorph

Chris Gradwell

Mike Thorn

Andrew Barrett

**Tickets £12**

**Advance Bookings: 01398 323462**

**On sale from 25 August: Dulverton Post Office and The Tantivy**



**webbers W**

In aid of All Saints Church funds

## WINSFORD FETE AND SHOW WITH FAMILY DOG SHOW

**Saturday 13th August 2016, 1.00pm**

Sheep Racing (1st race 2.00pm)

Children's Fancy Dress (1.20p.) and Races (2.45pm)

Show Auction of Produce starts at 4.00pm

Maypole Dancing, Plant Stall, Traditional Fete Stalls, Tombola,

Grand Draw, Produce, Cakes, Clothes, Bric-a-Brac and Books

Delicious Teas, BBQ and Ice Creams!

**So Come And Enjoy The Fun!!**

Things we need for the fete are prizes for the raffle and tombola, old chipped china for the china throwing stall, clothes, shoes, hats and jewellery for the clothes tent, teddy bears, soft toys, household items for the "white elephant", toys and puzzles, produce and preserves, books, cakes. Also old quilts to be made into dog bed. Please bring any of these to Sue Hayes at The Close, Winsford or call me on 01643 851372 to pick them up.

### WANTED!

Winsford church invites you to enter your home grown produce, home cooking, crafts, photographs etc into the

### WINSFORD FETE SHOW TENT

Produce and home cooking to be auctioned in aid of the church.

Entry with all details available from The Oak Shop, Winsford.  
(Winsford residents will receive an entry form with Across Exmoor)

## MINEHEAD AND EXMOOR MUSIC FESTIVAL

**TUESDAY, 26th JULY, 7.30pm**

**ALL SAINTS CHURCH, DULVERTON**

Artistic Director – Richard Dickins

Elgar	Serenade
Rodrigo	Guitar Fantasia para un Gentilhombre
	Gary Ryan – guitar
Barber	Adagio
Tchaikovsky	Serenade

*'The Minehead and Exmoor Festival is an extraordinary achievement of wonderful music making. Long may it continue to flourish.'*

*'Music performed at a level of excellence always amazing to those who hear it, especially for the first time.'*

*'A most exciting and stimulating experience'*

Tickets - £15, students £3, available from Dulverton Post Office or Regal Theatre, Minehead, 01643 706430

Full details of all concerts on [www.mineheadmusicfestival.org/](http://www.mineheadmusicfestival.org/)

**BRUSHFORD PARISH HALL**

presents live televised BBC

# LAST NIGHT OF THE PROMS

Saturday 10th September 2016

2 course Dinner, Bar and Raffle



Tickets available 1st August from The Tantivy & Dulverton Post Office. £12.50 per person, booking essential, tables of up to 6



## Voices of Exmoor Summer Concert

Broadway Bernstein Theatre Gershwin Movies  
**Songs**  
from the  
**Shows**  
and much more and much more

Friday 1st July 2016

Saturday 2nd July 2016

at 7.30 p.m. in Dulverton Town Hall

Tickets £5.00 from The Tantivy, Dulverton

IN SUPPORT OF  
ST MARGARET'S HOSPICE

## The Wine Lady 'Delivering Wine To Your Door'



### WINE FOR EVERYONE

Parties / Weddings / Local & Business Events / Clubs / Gifts

*Sale or Return – Glasses*

[www.moorwine.co.uk](http://www.moorwine.co.uk)

01398 341406 / 07970 567628

[info@moorwine.co.uk](mailto:info@moorwine.co.uk)

www.

**exmoortrees**  
.co.uk

Native trees and  
shrubs for hedge  
and woodland



Call us on: 07971 580057



## GUILDHALL HERITAGE AND ARTS CENTRE, DULVERTON

Open from March 21st to end of October

Mondays - Fridays, 10.30- 4.30,

Saturdays, 10.30– 1, Sundays 2-4.30

[www.dulvertonheritagecentre.org.uk](http://www.dulvertonheritagecentre.org.uk)

**Tuesday 5th July 4pm Town Tour** - A guide through Dulverton's historic past; listen to stories and learn of some secrets of Dulverton from days gone by. £2.50pp

**Sunday, July 10th - Saturday, July 16th** - Art Exhibition in the Gallery –Dawn Mangan, Jos Harral and Peter Moss – an exhibition in a mixture of media, to include paintings in watercolour, acrylic, oil and mixed media, covering a variety of subjects

**Sunday 17th July 3pm** - Town Tour - A guide through Dulverton's historic past; listen to stories and learn of some secrets of Dulverton from days gone by. £2.50pp

**Sunday 17th July – Saturday 23rd July** - Dulverton Art Classes Summer Exhibition Pauline Pearce's students exhibit their drawings, paintings, and collage work across a range of subjects

**Sunday July 24 to Saturday August 6** - An Art Exhibition by Artists 303 Formed 50 years ago by Artists working along the A303 road, painters, print makers and mixed media are dedicated to their particular means of expression and their artistic development

**Thursday 28th July 4pm** - Town Tour A guide through Dulverton's historic past; listen to stories and learn of some secrets of Dulverton from days gone by. £2.50pp

**Friday 29th July 10.30am – 4pm** Book Sale for Railway and Heritage Centre Funds at Dulverton Heritage Centre (weather permitting)

**Tuesday 9th August 4pm** - Town Tour - A guide through Dulverton's historic past; listen to stories and learn of some secrets of Dulverton from days gone by. £2.50pp

**Sunday 21st August 3pm** - Town Tour - A guide through Dulverton's historic past; listen to stories and learn of some secrets of Dulverton from days gone by. £2.50pp

**Friday 26th August 10.30am – 4pm** Book Sale for Railway and Heritage Centre Funds at Dulverton Heritage Centre (weather permitting)

Thank you...to those that supported our recent quiz at the Town Hall and to the many helpers behind the scenes. It was a great success and we plan to make it an annual event - look out for details next spring.

## Dulverton Pharmacy Advice

Hay fever is a common condition caused by an allergic reaction, most commonly to pollen. In the spring it's tree pollen that causes hayfever with grass pollen being the main culprit in late spring and summer. Some of the most common symptoms are people experience are, sneezing, watery eyes, itchy throat, itchy nose, blocked/runny nose.

We stock various remedies in our pharmacy, depending on your symptoms. Antihistamine tablets work by stopping the release of the chemical histamine in your body. They usually effectively relieve symptoms of runny nose, itching and sneezing. Eye drops are used to reduce itching and swelling in the eyes. Some people prefer to use nasal sprays instead of tablets.

Here are a few helpful tips to reduce the effects of the pollen if you are a hayfever sufferer. Pollen

counts tend to be higher during the early evening, keep windows and doors shut when pollen is high. Avoid mowing the lawn altogether during your susceptible months.

Choose low pollen days for gardening. Keep away from grassy areas when pollen counts are high. Regularly splash your eyes with cool water. It will soothe them and clear them of pollen. Remember that wrap-around glasses protect your eyes from pollen getting through.

When driving on a high count day or time of day keep windows closed. Smear Vaseline around the inside edges of your nostrils - it helps stop pollen from getting through. We look forward to seeing you in Dulverton Pharmacy and helping you with your hayfever.



Small charges apply for some activities  
Some age and height restrictions apply • Online booking available for some activities  
Visit [www.outdoorandactive.co.uk/events](http://www.outdoorandactive.co.uk/events) for details  
or call 01566 771930

**Vintage Film Club** - 3 pm at Fishers Mead Community Centre –  
2nd Wednesday every month:

Wed 13th July – Flying Down to Rio – the first ever pairing of Fred Astaire & Ginger Rogers – 1933

Wed 10th August – The Great Gatsby – starring Robert Redford & Mia Farrow – 1974

**Dulverton Action Group** - Litter-picking – 3rd Sunday every month:

Sun 17th July – 10.30 meet by the Heritage Centre – Everyone welcome!

Sun 21st August – Ditto

**Withypool Flower Show and Fete** on Wednesday 17th August at 2.30 pm

Traditional stalls and sideshows  
Raffle, Teas and Childrens Races

Come and join us for a family afternoon out by the beautiful river Barle.

**D&SSH Bagley Hunter Trials, Family Dog Show, Lurcher and Terrier Racing**

Sunday 21st August 2016, starts 11a.m at Cloutsham, nr Porlock TA24 8JU

For schedules E mail [sarahwoollacott@yahoo.co.uk](mailto:sarahwoollacott@yahoo.co.uk) or ring 07816225974

**71st Hawkridge Revel & Gymkhana**

Bank Holiday Monday August 29th 2016

Commencing at 10.30am with Showing Classes, including Hunter Class.

Mountain & Moorland and Exmoor Pony classes – ridden & in-hand

Show Jumping commencing at 11 am. – including Nursery Stakes, Novice Class & Open Classes.

Gymkhana & Family Dog Show at 2pm.

Other attractions – Children's Mounted Fancy Dress, Foot Races, Side Shows, Stalls, Beefburgers, Ice cream & Refreshments.

Fun day out for all the family.

Enquiries Tel: 01398 341520/ 01643 831320

Website: [hawkridgeexmoor.co.uk](http://hawkridgeexmoor.co.uk) Schedules  
SAE: Mrs V Lock, Old School House, Hawkridge, Dulverton TA22 9QN

## MOREBATH FETE SUNDAY 3rd JULY at 2.00pm

*You'll be glad you came!*

Car Boot

Dog Agility



For Car Boot, Marquee Table Top Sales and other Pitch Bookings please contact  
Pauline Newton on 01398 331666

© Morebath Village Hall

Donations to Local Causes - Registered Charity No. 207013



The Friends of Dulverton Library meet in the library at 2.30pm on the first Thursday of the month.

## FROM HERE TO ABSURDITY SATURDAY AUGUST 20th 8pm DULVERTON TOWN HALL

Direct from the Edinburgh Fringe, the quick-fire satirical sketch show is sure to provide a great night out.

Written and performed by Private Eye contributor Richard Kelly, From Here to Absurdity comprises 30 original comedy sketches that recall the hey-day of Peter Cook and Beyond the Fringe. It has already been performed at innumerable venues across the country and has headlined at both the Edinburgh Fringe and Chicago Sketch Festivals. A series with Radio 4 is currently being negotiated.

Kelly will be joined on stage by Ashley Hern, formerly of the Oxford University Revue, and Lucy Simons, a stand-up comedienne already well known to the comedy clubs of Manchester, Liverpool and the North-West. In the course of their set, the Absurdity trio will skewer numerous features of everyday life, including (to quote the cast) "death, divorce, dysentery, dementia and devolution". Those with a hatred of political correctness and senior managers are also likely to find something amusing.

So if you fancy live comedy that's a bit different to stand-up, Dulverton is the place to be on Saturday 20 August - Tickets are £8 and are available at Dulverton Post Office or 01398 323818 or janaross2003@yahoo.co.uk Further details of the show can be found at [www.2absurdity.co.uk](http://www.2absurdity.co.uk).



**WEDNESDAY 20th JULY**

**A trip to Barrington Court  
Tudor Manor House  
and Getrude Jekyll Gardens.  
£9 per person (National Trust members free).**



Discover the haunting echoes of the past at Barrington Court, a Tudor manor house free from collections and furniture. Explore, using your imagination and your senses, to discover a house full of memories, where light fills the rooms and you feel you can almost touch the past.

The property was saved from ruin and restored by the Lyle family in 1920s, when the court house resembled a barn rather than a proud manor house. Stroll through the Getrude Jekyll inspired gardens. Be spurred on in your own garden or by the stone-walled kitchen garden. Don't take our word for it, visit Strode House Restaurant to taste the home-grown delights.

**Advance booking essential.**

**Contact Linda Hammond**

**01398 323954**



Community Bus Available

Event organised by  
Dulverton Group Exmoor Society



**Nikki Routledge  
Cert CBS**

**Human Bowen  
Practitioner**

Gentle and light therapy suitable for musculoskeletal pain, asthma and allergies, migraines, MS and other chronic conditions in adults, infant colic and bed-wetting or growing pains in children.

**Tel: 07890 968 115  
[www.mimi.me.uk](http://www.mimi.me.uk)**



## Casino Night

**7.30 Saturday 17 September**

**Luxborough Village Hall**

**£12.50 to include gaming chips**



**and hot supper**

**Licensed Bar**



**EXMOOR U3A**  
THE UNIVERSITY OF THE THIRD AGE

**Wednesday 27th July**

**Hearing Dogs for Deaf People', by Bryan Hollingsworth**

All other details as normal - ie meet between 10 - 10.30 for coffee, with talk following on.

Note : There is no meeting in August.



4th July [ Monday ] MAPPERTON GARDENS A guided tour to this romantic Italianate garden deep in a lost Dorsetcombe, complete with grotto's and orangery. A guided tour has been arranged.

20th August [ Saturday ] ANNUAL DULVERTON & DISTRICT FLOWER & PRODUCE SHOW.

If you are entering this year then schedules will be available from the end of January at the Post Office and M&H Fruit & Veg. If not then come and see and enjoy the exhibits from 2pm onwards. It is intended as a fun day and should not be taken too seriously so why not pick up a schedule and see what you can enter.

## HOBBS Electrical Contractors Ltd



**\* Commercial \* Domestic \* Industrial \***

**Electrical Installation  
Rewires, new builds & renovations  
Maintenance & Repairs  
Inspection & Testing, Portable Appliance Testing**

**Dulverton: 01398 323518**

**Tiverton: 01884 253563**

Office: Unit 4, Exebridge Industrial Estate, Exebridge, Dulverton, Somerset, TA22 9BL

*Celebrating 25 years 1988 - 2013*



**Dulverton Town Hall**

**Friday July 8 7.30pm**

**IDA (Cert 12A)**

**Dir: Pawel Pawlikowski**

**POLAND 2013**

**123 mins**

Anna, a young novice nun in 1960s Poland, is on the verge of taking her vows when she discovers a dark family secret dating back to the years of the Nazi occupation. She has to see Wanda, the only living relative, before she takes her vows. Wanda tells Anna about her Jewish roots. Both women start a journey not only to find their family's tragic story, but to see who they really are and where they belong.

Subtitled

**Friday July 29 7.30pm**

**BEING AP (Cert 12A)**

**Dir: Anthony Wonke**

**UK 2015**

**103 mins**

The incredible inside story of one of Northern Ireland's greatest ever sportsmen A.P. McCoy. His final season shows the fascinating mix of sacrifice, doubt, decisions, triumphs and failures, injury and finding a way to leave the stage. The characteristics that have driven him to dominate the most dangerous of sports remain as strong as ever. With unprecedented access to A.P. and those closest to him, the billionaire owner JP McManus, the trainers and fellow jockeys and above all his wife, this insightful documentary celebrates an incredible man, and also the universal themes of relationships, decisions and sacrifices.

**Friday August 12 7.30pm WATER DIVINER (Cert 15)**

**Dir: Russell Crowe**

**AUSTRALIA/TURKEY/ USA 2014**

**111 mins**

After the Battle of Gallipoli in 1915, an Australian farmer, Connor (Russell Crowe), travels to Turkey to find his three missing sons. While staying at a hotel in Istanbul, he is thrust into a vastly different world, where he encounters others who have suffered their own losses in the conflict: Ayshe, a strikingly beautiful but guarded hotelier raising a child alone; her young, spirited son, Orhan, who finds a friend in Connor; and Major Hasan, a Turkish officer who fought against Connor's boys and who may be this father's only hope. With seemingly insurmountable obstacles in his path, Connor must travel across the battle-scarred Turkish landscape to find the truth and his own peace. Beautifully photographed and thematically rich.

**Friday August 26 7.30pm DAD'S ARMY (Cert PG)**

**Dir: Oliver Parker**

**UK 2016**

**100 mins**

1944 and World War II is reaching its climax. The Allies are poised to invade France and finally defeat the German army. But in Walmington-on-Sea morale amongst the Home Guard is low. Their new mission to patrol the Dover army base is a great chance to revive spirits and reputation, until glamorous journalist Rose Winters arrives to write about their exploits, setting the pulses racing and putting the local women on red alert. MI5 then discover a radio signal sent direct to Berlin from Walmington. There's a spy on the loose! The outcome of the war is suddenly at stake, and it falls to our unlikely heroes to stand up and be counted. Perfect imitations of TV's beloved predecessors from Bill Nighy, Toby Jones, Michael Gambon and Tom Courtenay.

*Tickets –Dulverton Films members £3, non-members £4.50, students, accompanied by an adult, £2.50. (Tickets may be available on the door - £4). Book in advance at Dulverton Post Office (Tel: 01398 323474) or email janaross2003@yahoo.co.uk. Bar open from 7pm.*

# NIMBLE FINGERS



**23 Fore Street, Dulverton Tel: 01398 323688**

Tapestry Kits & Loose Canvases - Elizabeth Bradley Kits  
Trammed Canvases

Cross Stitch Kits & Charts - Free Style Embroidery Kits

Anchor and DMC, Tapestry Wool & Stranded Cotton

Knitting Yarns - Fabrics

Accessories for Most Embroidery Needs

Wide Range of Haberdashery for Home Sewing and Clothes Repair

Ribbons, Tapes, Elastics, Bindings, etc - all sold by the metre

Buttons - sold singly

Silk Flowers, Floral Art Accessories

**OPEN - Monday to Saturday 10.15am - 5pm - closed Thursdays**



**New Build  
Extensions  
Renovations  
Loft Conversions**

**Tel: 01398 323789**

**Mobile: 07837 729484**

**Email: [mikecottrell20@gmail.com](mailto:mikecottrell20@gmail.com)**

## CONGREGATIONAL NEWS

The roof work still desperately needs doing but we are waiting to hear about the Listed Places of Worship Grant. This was due to be announced at the end of June. We wait with baited breath!

Our hall is well used by several groups in the town. If you are looking for a comfortable venue for up to 40 people to meet, do get in touch. Our contact is 01398 323030.

Family and toddlers meet every Tuesday morning in term time - numbers have shot up lately but there is room for more. If you want to come along contact Wendy on 01398 324395.

We meet for worship every Sunday at 11AM. The services are informal and last about an hour, followed by coffee and chat. All are welcome.

### Dulverton Abbeyfield Residential Home

*Providing Care and Companionship for the Elderly*

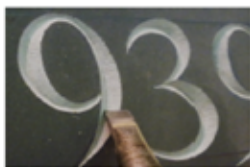
- Relaxed, friendly atmosphere, social activities.
- Quiet, convenient location, attractive garden.
- Excellent locally sourced food and local staff.
- Guest room, ideal for convalescence or short-term respite.

Please contact: House Manager, Frances Chanter 01398 324136

## LAURENCE J.W. BECKFORD MONUMENTAL MASON & CARVER



SLATE MEMORIAL



TRADITIONAL HAND  
CUT LETTERING



MEMORIAL BENCH

## HEADSTONES and MEMORIALS

Individually designed and hand carved in Dulverton

Refurbishment of existing headstones and memorials  
including re-fixing, painting and gilding

0772 4452 961

[www.beckfordsartworks.co.uk](http://www.beckfordsartworks.co.uk)

[laurence.beckford@sky.com](mailto:laurence.beckford@sky.com)

Full member of the Master Carvers Association (M.C.A)



## Called to the Bar

Dulverton has three pubs, or should that be three-and-a-half given that the Lion also has the Tap? It was four until recently, but the Rock at the top of town has now shut its doors (perhaps for good, but who knows, it was shut for some time in the late 1990s I'm told).

Even with three (or three-and-a-half), Dulverton is remarkably well endowed with pubs, given that many towns its size are down to one. For that let us give thanks, but if you wander around town you will see that Dulverton was once home to many more hostelryes: the thatch-topped Boot, now a holiday home, but once owned by Wiveliscombe brewers Arnold & Hancock. The New Inn is on the High Street, where the surgery used to be until its move in 2009; continue strolling and you will see a plaque for the White Hart, once a milk bar and now a hairdressers, while down on the High Street, another sign recalls the White Horse.

The Lamb Hotel (once christened with the fiercer name of the Ram) is now a block of flats ('that was the posh place,' I'm told by one local, 'though the spirits were always cheaper there'). History records even more: The Barnstaple (now Webbers and before that a butchers); the Country House Inn was supposedly at Wreneaton, next to the site of Stanbury's car showroom, which itself was once an orchard (apples for cider perhaps?). There were others and one local once told me that there was once 49, which I find it hard to believe.

On the other hand, who knows? Many of these pubs would have been beer and cider houses, where locals sold their home made beverages — possibly a lot more cider than ale, though Porlock Vale was a notable growing area for barley. Times and tastes change, but wander around Dulverton and let your mind imagine the plethora of public houses. The English pub is part of the warp and waft of our society and long may it be so.

Adrian Tierney-Jones

## Lance Nicholson Country Pursuits



9 High Street, Dulverton  
01398 323409

Shotguns, rifles,  
ammunition, clays etc.  
All your game fishing needs  
plus details of the  
Dulverton Angling Association.  
Large range of Barbour clothing.

[www.lance-nicholson.co.uk](http://www.lance-nicholson.co.uk)

## MALUMBY'S



37, High Street,  
Dulverton TA22 9DW

01398 323110



OxleyCare provides 24 hour live-in care to clients across the south of England. We aim to assist clients to live safely, happily and independently in the comfort of their own homes.

Our carefully selected carers are available for short or long term positions providing companionship, respite, post-operative and dementia care.

They can assist with medication and personal care, cook nourishing meals, drive, do light housework and help clients to entertain family and friends. Carers with a background in nursing will help where a greater need of care is required.

OxleyCare is a member of the UKHCA and is regulated by the Care Quality Commission

*"The last of our carers has gone and I cannot thank you and your team enough for the brilliant care we have received".*

*"I am very impressed with how you match my parents' requirements with kind, thoughtful people. Thanks".*

*Oxley*  *Care*



#### Live-in Care

- Enriching quality of life • Companionship
- Cooking • Driving • Activities and outings
  - Helping entertain family and friends
- Visiting relatives • Assisting with computers
- Medication and personal care • Care for more complex needs
- Accompanying on flights and holidays • Caring for pets
  - Shopping • Laundry

Telephone Siobán Stoner on

**01980 846690**

**[www.oxleycare.co.uk](http://www.oxleycare.co.uk)**

**NHS**  
**Somerset**

**MAX DAVISON OPTICIANS**  
**AT**  
**EXMOOR MEDICAL CENTRE**



**Your Local, Independent Quality Optician**

**Why travel to Taunton, Minehead or Tiverton when we are on your doorstep?**

**Sight Test and Eye Examinations**

**NHS and Private Patients**

**Spectacles**

**Fashion, Classic and Budget Frames**

**Soft Contact Lenses**

**Children's Eyecare**

**Acute Community Eyecare Service**

**Glaucoma Screening**

**To book an appointment or if you have a query:**

**Phone: 01984 634140**

**email: [max.davison.ltd@googlegmail.com](mailto:max.davison.ltd@googlegmail.com)**

**website: [maxdavisonoptometry-watchet.co.uk](http://maxdavisonoptometry-watchet.co.uk)**

## MOREBATH VILLAGE HALL Forthcoming Events 2016



**Morebath Fete** - remember to put the date in your diary for this great event. All your favourite stalls and attractions. To book a table for Table Sales 'phone Pauline 01398 331666.

**Sunday  
3<sup>rd</sup> July  
2.00pm**

**Morebath Yoga - Monday 10.20-12 noon**

All abilities welcome. Session dates listed below.

Details: 01398 332334 or E.mail: rafton.mail@rockspray.co.uk

11 & 25 July 8 & 22 August

**Registered Charity No. 207013**

## WIMBLEBALL LAKE



## PLANNED EVENTS 2016

Date	Name of event	Type of event
3 <sup>rd</sup> July	Wimbleball Open Day	Have a go on our high-ropes course, archery, canoeing & kayaking - £4 / session (£2 parking all day)
31st July	Full distance triathlon	X Man Events present this full distance triathlon (2.4 mile swim, 112 mile bike, 26 mile run) www.xmaneevents.com

Please call 01398 371460 to confirm the above planned events are going ahead / to book / for further details.



Exmoor News is published every two months, 2,300 copies printed (covering southern Exmoor) and also published online at [www.exmoornews.co.uk](http://www.exmoornews.co.uk). We encourage articles for our publication, just email us at [exmoornews@gmail.com](mailto:exmoornews@gmail.com).

Imagine a company that analyses your IT requirements, then delivers cost effective, reliable and complete business solutions on time and to budget...

Ylem turns imagination into reality. We have over 30 years experience in delivering Intelligent IT solutions to the local business community.

**YLEM**  
Intelligent IT

- SOFTWARE
- HARDWARE
- CONSULTANCY
- INSTALL
- TRAINING
- SUPPORT

Tel: 01398 322000, Email: [info@ylem.com](mailto:info@ylem.com), Web: [www.ylem.com](http://www.ylem.com)



# G.S. GARDEN MACHINERY

## Sales and Repairs of all Garden Equipment

Agents for:

Makita

**Makita**

Castel and  
Lawn King  
Ride Ons and  
Mowers



CASTELGARDEN

LAWN-KING®



Tanaka Brush  
Cutters and  
Hedge Cutters

**Tanaka**

**New and Secondhand  
Friendly Service**

Units 1 & 2A, Carnarvon Arms Garage,  
Brushford, Dulverton, Somerset TA22 9AG.

Tel: 01398 32 44 55 Email: [gsgardenmachinery@gmail.com](mailto:gsgardenmachinery@gmail.com)

Larchwood Cattery  
East Anstey EX16 9JL



Fully Licensed  
Purpose built

Individual heated chalets

Spacious outdoor runs

Tel: 01398 341 100

Email: [hmetivier1@btinternet.com](mailto:hmetivier1@btinternet.com)

[www.larchwoodcattery.co.uk](http://www.larchwoodcattery.co.uk)

## **STEVE BISHOP** **PEST CONTROL** **SERVICES**

*Covering West Somerset,  
North and Mid Devon*

*Control of rural,  
residential & commercial pest species*

*Qualified Pest Control  
Technician*

**01643 851267**

**07870 815400**

*For Fast, Friendly, Reliable Service*

**Rats, Mice, Moles,  
Crawling and Flying Insects  
Inc. Wasps, Fleas, Bedbugs,  
Cockroaches, Flies,**

**Bird control and proofing  
Electric Fly Killing Units Supplied**



## The Exmoor Pony Centre

Ashwick, Dulverton,  
Somerset TA22 9QE

### Upcoming Events for 2016

#### **Sunday 24th July Birthday Bash Activity Day 11am 3pm**

Join us at the Pony Centre to celebrate our 10th birthday. Enjoy fun and games and lots of birthday cake. Get close to the ponies with pony rides and pony grooming and enjoy refreshments in our Green Room building.

#### **Wednesday 27th July Barney's Birthday Party at Dunster Country Fair**

Join our volunteers and fundraisers at the Dunster Country Fair. See the Exmoor ponies in the show ring and celebrate the Centre's and Exmoor Pony Barney's 10th birthday

with some birthday cake. There will be cakes suitable for both people and ponies!

#### **Every Thursday in August Activity Afternoons 12pm 3pm**

Cream teas, plus pony grooming and pony rides at the Pony Centre.

No booking necessary, just turn up – and don't worry about the weather. All activities at the Centre take place under cover if necessary. Admission to the Pony Centre is free with small charges for the activities. Please note the minimum age for riding is 4 years old.

For more information:  
Tel: 01398 323093

Email: [info@exmoorponycentre.org.uk](mailto:info@exmoorponycentre.org.uk)  
Web: [www.moorlandmousetrust.org.uk](http://www.moorlandmousetrust.org.uk)

The Centre is open Mondays, Wednesdays, Thursdays, Fridays and Sundays from 10am until 4pm. We are closed on Tuesdays and Saturdays.

# Carole King

LIFESTYLE & LIVING

STOCKISTS OF SHOES, FASHION  
HOMEWARE & GIFTS

*"Whoever said money can't buy you  
happiness, doesn't know where to shop"*

[www.carole-king.co.uk](http://www.carole-king.co.uk)



**27 High Street  
Dulverton  
Somerset  
TA22 9DJ**

**Tel: 01398 324692**

## EDWORTHYS OVEN CLEANING

The Flat, Abbeyfield House, Dulverton,  
Somerset, TA22 9BY  
01398 323 696



Professional, Reliable, Friendly and  
Competitive Pricing.

For a free quotation, please call us on  
01398 323 696 and we will happily  
arrange a date and time to suit you.

## BOBCAT HIRE

*Skid Steer Loaders*  
*44" & 48" Wide*  
*Mini Diggers - 1.5, 4 & 5 Ton*  
*Available with Post Hole Auger*  
*& Rock Breaker/Post Banger*

**SELF DRIVE**

*Competitive Rates*

**Tel: 01598 740406**

**Mobile: 07970 914070**

Richard Smith  
Agricultural Engineer  
North Molton, Devon

## Colin's Property Improvements

*Est. 27years*

Painting, Carpentry, Building, Powerwashing, Drains,  
Chimney Sweeping, Plumbing, Mini Digger

Mobile: 07779 475324

Home: 01398 324569

## *F&S* FRIENDSHIP & SONS FUNERAL DIRECTORS

*For the personal touches that matter*

Your Local Independent Funeral Directors offering personalised planning and  
compassionate care day and night

For professional advice and  
guidance please contact

**TELEPHONE: 01398 324590**

Golden Charter

Love Life Planning

Office and Chapel of Rest at:

Unit 7, Barle Enterprise Centre, Dulverton, TA22 9BF - [www.friendshipandsons.co.uk](http://www.friendshipandsons.co.uk)



- Chapel of Rest
- Prepaid Plans
- Home Visits



# Exmoor Society Guided Walks

## **Friday 1st July 2016 2:00pm-4:15pm Kilve and East Quantoxhead Walkabout**

Join this easy 2¼ mile / 2¼ hour stroll to discover some of the historical highlights of this fascinating area. Please wear weatherproof boots and clothing. Optional cream tea to conclude the afternoon.

Meet: Car park, Kilve Beach Grid Ref. SS 155442 TA5 1EG

## **Tuesday 5th July 2016 10:00am-12:30pm Lynton and Valley of Rocks - An historic tour**

This is a fascinating 2.5-hour walk to see a different view of Lynton, to learn how it has been shaped over the years and how the Victorians were drawn to the splendour of the Valley of Rocks. 2.5 mls/2.5 hours.

Meet: Valley of Rocks ENPA car park & picnic area (car park near public toilets). Grid Ref. 7113 4968

## **9th July 2016 10:30am-3:00pm Withypool and Tarr Steps**

We start this walk by following a lovely stretch of the River Barle along the waymarked path from Withypool to Tarr Steps. We will then cross the ancient monument of Tarr Steps clapper bridge and climb slowly above the valley to the open moorland of Withypool Hill, passing two prehistoric sites before descending back to Withypool. Refreshments and toilets at Withypool and Tarr Steps. 9.5 miles.

Meet: Withypool car park. Grid Ref 842353 TA24 7QP

## **Friday 15th July 2016 10:00am-12:30pm Dunster Walkabout**

An easy 2.5 hour / 2.5 mile walkabout to see and hear about some of the fascinating things in Dunster that the normal tourist misses. Please wear suitable outdoor clothing and footwear.

Meet: Visitor Information Centre, Dunster Steep, Dunster TA24 6SE

## **Friday 22nd July 2016 10:30am-3:30pm Selworthy and North Hill**

Enjoy stunning views on this circular walk of appx. 7 miles from Selworthy up to North Hill, Selworthy Beacon, Hurlstone Point and Bossington Hill. Some

steep climbs and descents. An alternative route may be taken in inclement weather. Please bring a picnic. Dogs under control welcome.

Meet: Selworthy Church overflow car park, Selworthy, Nr Minehead

## **Thursday 18th August 2016 10:30am-3:00pm The Woods of Simonsbath and the Historic Sawmill**

A mile walk taking in Ashcombe Wood, Birchcleave Wood and Simonsbath Sawmill. Hear about the history and management of these plantations created by the Knights around Simonsbath in the 19th century. Slightly uneven ground with some short steep sections. Please bring a picnic and if the weather is bad we can lunch in the sawmill. Never more than appx half a mile from the car park, which has toilet facilities. Families welcome and dogs under close control.

Meet: Ashcombe car park, Simonsbath. Grid ref. SS 773 394 Postcode TA24 7SH

## **Friday 26th August 2016 10:30am-4:00pm Far West Exmoor**

A 9.5 ml challenging circular walk along the South-West Coast Path (narrow and sheer drop in places) from Hunter's Inn to Holdstone Down returning via Trentishoe Down and Ladies Mile. Fairly rough walking with some steep climbs and descents. Please bring a picnic. Dogs under control welcome.

Meet: NT car park, Hunter's Inn, Heddon's Mouth GR 655 482

The Society advises that participants take part in activities at their own risk. For all outdoor activities please wear weatherproof clothing and walking boots. Members and non-members are most welcome.

There is no charge for the guided walks. A small donation is appreciated from non-members.

Very occasionally walk details may change so please check the website in advance.

**For any enquiries, please contact The Exmoor Society**

**info@exmoorsociety.com**

**01398 323335 www.exmoorsociety.com**





## **John W Morgan Garden Services**

**Wooden Gates for Driveway,  
Farm, Garden and Garage.**

**Fencing • Decking • Turf  
Pergolas • Arches**

**Trees and Hedges cut  
and pruned**

**West Anstey 01398 341972  
Mobile: 07768 325432**

**[www.johnwmorgan.co.uk](http://www.johnwmorgan.co.uk)**



## **Diamond Shine**

## **Mobile Vehicle Valeting**

**Professional  
Affordable Reliable**

**Your local vehicle  
cleaning company**

**07896 154 176**

**[phil46yam@hotmail.com](mailto:phil46yam@hotmail.com)**

## **GRANT KELLY CARPENTRY & JOINERY**

*FULLY QUALIFIED CITY & GUILDS ADVANCED CRAFT  
OVER 20 YEARS EXPERIENCE*

*ALL ASPECTS OF CARPENTRY/JOINERY & BUILDING  
WORKS UNDERTAKEN*

*PURPOSE MADE HARDWOOD AND SOFTWOOD  
WINDOWS & DOORS*

*BESPOKE FURNITURE, KITCHENS, BEDROOMS, FITTED &  
FREESTANDING*

*LOFT CONVERSIONS, EXTENSIONS & ALTERATIONS  
STAIRCASES NEW & REFURBISHED*

*WOOD & LAMINATE FLOORING  
CUT ROOFS*

*FREE ESTIMATES*

*LOCAL, RELIABLE AND PROFESSIONAL SERVICE*

***[www.exmoorcarpenter.co.uk](http://www.exmoorcarpenter.co.uk)***

***Tel: 01643 851606    Mobile: 07730 525713***

***Townsend Cottages, Winsford, TA24 7JE***



If a dog could choose what it would like to do on a day, the lucky hounds that take their owners to the Exmoor Foxhounds Show on August Bank Holiday Sunday in Exford have it all.

Presented on arrival with an immaculately set up field with five rings and a race track what is a discerning 4-legged companion meant to do first? Certainly last year the morning had begun wet and had filled the air with the sweetest of scents but that was soon lost as the race track became very tempting.

Then we noticed that a busy queue had built up at Dorset Dog Togs and word travelled fast that there were handmade coats in the season's fabrics being tailored to fit.

Pretty coloured ribbons were in abundance too and if a chap showed his appreciation enough he was given another

quick brush off to have his picture taken by a very famous photographer.

There was so much going on: fences to jump and tunnels to run through and if lucky a bit of broken beefburger could be found on the ground. Sadly though for one little boy, his pretty terrier Millie in the final for Best Young Handler found it all too much and deserted him at high speed to join in the racing again causing much hilarity in all breed circles.

If that wasn't enough excitement for a day, one of our judges bid us farewell to go home to Warwickshire and a few moments later returned as he had reversed into a dung heap! A big thanks to our hosts Mr. and Mrs. Kirby for having us again this year and helping us raise funds for our friends at the Exmoor Foxhounds. Can't wait for this August Bank Holiday Sunday.

Buster Brown (Jack Russell cross-type): Correspondent



## Conservation work and woodland projects at Wimbleball

South West Lakes Trust staff and volunteers at Wimbleball Lake have been busy experimenting with their new charcoal kiln, and so far have produced 45 bags of high quality charcoal, sustainably produced from our woodlands. The idea is to sell the charcoal to visitors and campers to raise money for the charity, as well as give people the opportunity to support sustainably managed woodlands. Humans have been making charcoal for over 3000 years, there'd have been no bronze or iron age without it. Unfortunately much of the charcoal for sale in this country is not sustainably produced (i.e. wood from illegally felled forests that results in deforestation and desertification) and some even funds terrorist groups in countries

such as Somalia. The process involves stacking the kiln correctly with well-seasoned wood, lighting the kiln and then managing the burn process – it's a bit like baking a cake – if you don't cook it enough the cake doesn't cook (the charcoal won't be charred enough to work effectively), cook it too long and the cake (and charcoal) will be ruined. It's been a fascinating project, lots of people are intrigued by the kiln and stop to chat whenever we're loading or unloading it. We will certainly look at running some courses once we've mastered the art.

As well as producing charcoal, we have also been developing our log business and are currently offering well seasoned hard wood logs for £70 / load including free local delivery.

People can make orders for firewood or charcoal by calling us on 01398 371460 or by calling into the activity centre at Wimbleball Lake

Countryside and Angling Manager, Alex Forster

# Wimbleball Wood Fuels

## High quality seasoned hardwood logs

**Sustainably produced**

**£70 / load**

**FREE local delivery**

**£5 bag of kindling**



**Call 01398 371460 to order yours today or  
email: [aforster@swlakestrust.org.uk](mailto:aforster@swlakestrust.org.uk)**





# Hinam Farm Tearoom

Dulverton, Somerset TA22 9QQ

[www.hinamfarmexmoor.co.uk](http://www.hinamfarmexmoor.co.uk)

Tel: 01398 323405



## *Cream Teas and Light Lunches*

*Stunning location on a real working farm in the Barle Valley*

*Tearoom open (till mid October)*

*11am-5pm Wednesday to Sunday*

Sunday Roast - Booking only

All parties for all occasions

Directions: From Dulverton head south out of Dulverton past Bridge Pub with the play area on your left, turn right signposted for Hawkridge, at top of hill turn right signposted for Hawkridge, follow for 2 miles, at next junction turn left after 100 yds you will see our signs.



All types  
of work  
undertaken

RENOVATION  
RESTORATION  
PRESERVATION

Maintaining  
the Building  
Heritage  
of Exmoor



EXMOOR BUILDERS

T 01398 324 669 M 07831 252 276

e [info@exmoorbuilders.co.uk](mailto:info@exmoorbuilders.co.uk) w [www.exmoorbuilders.co.uk](http://www.exmoorbuilders.co.uk)



©Tony Keene

# F-STOP Images by Exmoor Photographers

Thank you to all the Exmoor Photographers. If you would like to show a series of images or have an idea for an article, please get in touch - [exmoornews@gmail.com](mailto:exmoornews@gmail.com)



©Tony Keene

©Mike Watson



©Alan Jones

©Nigel Stone

©Don Hover



©Julie Christian



# Masons Kings

# COUNTRY STORE

**Come and visit our Country Store for all of your household, garden, pet & agricultural needs**

- Clothing, safety & footwear
- Equine products & accessories
- Toys & gifts
- Haylage, shavings & straw
- Garden machinery
- Lawn care products
- Stihl chainsaws & trimmers
- Wide range of animal feed & accessories
- And so much more...



**SUTTONS**  
SEEDS  
Est. 1956

**CRAGHOPPERS**  
World Food Culture

**HARPERS FEEDS**  
Founded in 1911



**JOHN DEERE**



**STIHL**

**TOGGI**

**01398 322140 / melissa.n@masonskings.co.uk**  
**Exebridge Ind Estate, Nr Dulverton, TA22 9BL**

*Coutts*  
Event Hire Services

Wedding & Event Hire



Chairs

Tables

Catering Equipment

Vintage Props

Event Signage



*Coutts*  
Event Hire Services

Weddings

Conferences

Fetés

Family Celebrations

Corporate Events

Covering all areas across the South West.

Coutts Event Hire offer a Price Promise Guarantee so that you can rest assured that our quotations are the best value you can find.

**Tel: 07487 51 58 59**

**sales@couttseventhire.co.uk**

## WORLD WAR 1 CENTENARY COMMEMORATIONS

### George Thomas Lugg

George was born in 1885 at 2 Burston Cottages Morebath to Charles and Sarah with brothers Cecil, Frederick, James, Richard and Walter and sisters Daisy, Dorothy and Ida.

By 1901 his father had died and they were living at Rosemary Lane Dulverton. His mother remarried to become Sarah Radley and lived at Northmoor Road Dulverton and subsequently had two further sons.

In 1911 he was living with Herbert and Mabel Payne at Heaths Cottage in the High Street and was working as a Hairdresser.

He joined the Devonshire Regiment and was in India and Mesopotamia from December 1914 to August 1915. He was captured at Kut and died on 11 th September 1916. He is buried at Baghdad (North Gate) War Cemetery. Several of his relatives still live in the Town.

### Ernest Baker



Ernest was born in 1890 at Kingsbrompton to Charles, who had been born at Cullompton and was an Agricultural Labourer and Eliza who had been born at Exebridge.

In 1891 he was living with his parents and brothers Frederick, John and William at Castle Court Dulverton but by 1901 they were all at Higher Broford together with two younger brothers Charles and Sidney.

In 1911 his parents were now at Lower Broford, Charles had left home but Sidney was still at home with the youngest Baker, Stanley. Later they moved to New Buildings, Northmoor. Ernest was in the Navy from 1907 to 1916 and was Leading Stoker on HMS Indefatigable when it was torpedoed and he drowned on 31 st May 1916. He is remembered on the Plymouth Naval Memorial.

*Tony Sloley, Dulverton Heritage Centre*

### A. S. CLOCKS

Antique & Modern  
Clocks & Barometers

Repaired, Restored & Serviced  
Specialist in Longcase,  
(Grandfather), Bracket, Vienna  
& Carriage Clocks  
Longcase clocks bought & sold  
Clocks set up after house move.

Free collection & delivery service

For helpful, no obligation advice  
& A FREE ESTIMATE

call

01643 705290

[asclocks@btinternet.com](mailto:asclocks@btinternet.com)

### WOODLOUSE LIMITED CONSERVATION

*"Recognised Specialists In Lime Rendering,  
Lime Plastering & Building Restoration"*

- Lime Plastering •
- Lime Rendering •
- Cob Work •
- Lime Pointing •
- Lime Washing •
- Stonework •

- Fireplace Restoration •
- Conservation Projects •

**01984 629131**  
**07788 810576**

*"Restoring properties throughout Somerset & Devon"*  
[www.woodlouseconservation.co.uk](http://www.woodlouseconservation.co.uk)



## COME AND JOIN THE BIG WOODLAND ADVENTURE!

On Wednesday 1 June the Big Woodland Adventure takes place at Nutcombe Bottom, near Dunster (TA24 6TA) from 10am – 4pm with family games and activities lasting all day. The event is free, but donations to CareMoor for Exmoor\* are requested.

National Park ranger Adam Vasey says: "This year at Nutcombe Bottom we've got den building, slack lining with Channel Ventures, wild food talks and much more. You can also visit England's tallest tree or have a go on the adventure playground.

"We'll be joined by people from the Crown Estate and the Forestry Commission who be talking about forestry practises and woodland management at Nutcombe Bottom - there's no need to book for this event and everyone is welcome to come along."

Car parking and toilet facilities are available on site; please wear outdoor clothing and suitable footwear.

### Come Camping!

This year there are two Big Adventure Family Camp Outs at Horner and Wimbleball - for which booking ahead is essential.

### The Big Adventure Family Camp Out @ Horner – from 4:00pm 18th June - 11:00am 19th June 2016

Join the adventure! Come along and camp out in some of the most amazing locations on Exmoor. Site opens from 4pm, set your camp, cook your dinner with activities starting from 6pm. Tents down by 11am the next day. Ideal for first time campers, location: Horner TA24 8HY. Booking is essential.

Charge: £20/family (two adults & two children). £10/additional adult. £5/additional child. More information: <http://www.exmoor-nationalpark.gov.uk/enjoying/big-adventures-and-family-events>

### The Big Adventure Family Camp Out @ Wimbleball Lake - from 4pm 13th August - 11:00am 14th August 2016

Site opens from 4pm, set your camp, cook your dinner with activities starting from 6pm. Tents down by 11am the next day. Ideal for first time campers, location: Wimbleball Lake Cafe TA22 9NU. Booking is essential

Charge: £20/family (two adults & two children). £10/additional adult. £5/additional child. More information: <http://www.exmoor-nationalpark.gov.uk/enjoying/big-adventures-and-family-events>

For more details about hundreds of events in Exmoor National Park, visit our website: [www.exmoor-nationalpark.gov.uk/enjoying/events](http://www.exmoor-nationalpark.gov.uk/enjoying/events)

## Two Moors Way Anniversary Charity Walk

Four work colleagues, Peter Porter, Steve Brown, Paul Kemble, and Shaun Tolman are planning to celebrate the 40th anniversary of the Two Moors Way with a challenge to walk the length of the famous route, inspired by the fact that Steve's father did it when the route originally opened, 40 years ago.

Paul Kemble explains: "It was only as a result of BBC Spotlight talking to ranger Richard Eales from Exmoor National Park that we realized that the date we were planning to finish (29th May) was the date of the official opening in 1976."

Starting on Wednesday 25 May – the four walkers hope to complete the whole 102 mile route in only 5 days. They will be starting at Ivybridge in South Devon, the original start point of The Two Moors Way and crossing Dartmoor and Exmoor National Parks to finish in the seaside town of Lynmouth in North Devon.

The group are raising money for Parkinsons UK and while walking will also be helping to audit a recent revamp of the route's signage, gates and surfaces following some major improvements carried out by Exmoor and Dartmoor National Parks in partnership with Devon County Council to mark the 40th anniversary of the Two Moors Way.

Dan Barnett, Exmoor National Park Access and Recreation Manager said: "Working with the Two Moors Way Association, which is run

*(continued on page 27)*



# N. H. Hopkins

## General Builder

### All Building Work Undertaken

### No Job Too Small

### (01398) 323687

*(continued from page 26)*

by a dedicated group of volunteers, we have been carrying out a number of improvements to the route this year including signage, surface works, a new website and leaflet along with events to help local businesses get the most economic benefit from the route. It's a great way to celebrate the route's 40th birthday and I was pleased to hear of Peter's intrepid team raising money for such a worthwhile charity."

## **EXMOOR PONY NEWS**

Exmoor National Park has been working closely with the Exmoor Pony Society, the Moorland Exmoor Pony Breeders Group and the Moorland Mousie Trust to develop a number of projects to support free-living Exmoor pony herds. Exmoor ponies are an important part of the landscape of the National Park and one of its special qualities.

What makes an Exmoor pony an Exmoor Pony? Trying to find the answer is one of the actions the group agreed on. In addition to the organisations mentioned, the Rare Breeds Survival Trust, Defra, local vet Peter Green and Nottingham University have been working together to work out how to characterise the full genome of the Exmoor pony. The genome is an animal's complete set of DNA, including all of its genes. If the genome is defined, it will help us to understand where the pony has come from and which other breeds it is closely related to. It could also help to guide future breeding programmes.

During the last World War, pony numbers on Exmoor were drastically reduced - meat was in short supply and by the end of the war only around 50 ponies were left. It is from this tiny population that all Exmoor ponies derive. The genetic pool is, therefore, very small and it is important to try and preserve as much genetic diversity as possible to ensure the long term welfare of the ponies on the moor.

The team is currently agreeing the scope of work and fundraising for the project. If successful, the first phase will go ahead when the ponies are collected from the moor at the annual gatherings. Samples will be taken from the ponies and analysed by scientists at Nottingham. It is hoped that by early next year we will, for the first time, have the genome of the Exmoor pony.

## **Exmoor Pony Grant Fund**

In another initiative, Exmoor National Park Authority has established an Exmoor Pony Grant Fund to promote and conserve free-living Exmoor ponies. Grant applications could include equipment, measures to conserve the landscape using Exmoor ponies, promotion of the breed, marketing or research.

Sarah Bryan, Head of Conservation & Access at Exmoor National Park said: "The Exmoor landscape would be incomplete without the free living Exmoor pony and I believe that the Genome Project marks a pivotal moment in the long term survival of this endangered breed. We are delighted with the progress that is being made and look forward to seeing the results of this innovative project. "We are also pleased to be able to announce the launch of the Exmoor Pony Grant in recognition of the essential work that owners carry out to keep these iconic herds on the moor and we look forward to receiving applications."

Grants of up to £500 on a total project spend of £1,000 are available. For more information visit: <http://bit.ly/1XV6zCG> or from Monday 6 June please contact Heather Harley, conservation officer (farming & land management) on 01398 322277, [hjharley@exmoor-nationalpark.gov.uk](mailto:hjharley@exmoor-nationalpark.gov.uk)

## **SUBMITTED FOR PUBLIC EXAMINATION**

The Exmoor National Park Local Plan has reached an important

*(continued on page 28)*

# **TIVERTON & TAUNTON FLOORING LTD**

**39 Bampton Street & William Street Warehouse  
Tiverton, Devon, EX16 6AH**

## **HAL WHITE**

**Mobile: 07770 637 368**

# **01884 257 144**

(continued from page 27)

milestone as it was sent or 'submitted' to Government for independent examination on 6 th May.

The starting point for work on the Plan were the views and comments made by everyone who came along to one of the 'Your Future Exmoor' events and these have been very important in drafting the new plan. It includes policies which will guide development and the use of land in Exmoor until 2031 and indicate what kind of development will be permitted in planning applications. The aim is to achieve sustainable development so that local communities and businesses thrive, whilst conserving and enhancing the National Park. It will replace the Local Plan adopted in 2005.

The most recent consultation on the Publication Draft of the Local Plan was held during the summer last year, and there were 120 responses to it. The Inspector will take account of the representations submitted as far as they relate to the Plan's soundness. The Local Plan which has been sent to Government - the Submission Draft - can be found on the Authority's website at [www.exmoor-nationalpark.gov.uk](http://www.exmoor-nationalpark.gov.uk) along with policies maps, and other supporting documents. Reference copies can also be viewed during normal office hours at the National Park Authority Offices, Exmoor House, Dulverton.

National Park Authority Chairman Andrea Davis said "It is fantastic to have got the Exmoor Local Plan to this stage. It is the result of extensive consultation with local communities, businesses and stakeholders and is underpinned by a detailed evidence base. I am grateful to everyone who has contributed to this Plan for Exmoor, particularly those members of the Authority who have been closely involved with its preparation. We now wait to hear the Inspector's views on the Local Plan and any issues that he feels require further debate."

Planning Inspector Roger Clews has been appointed by the Planning Inspectorate to hold an independent examination into the Plan. He will assess whether the Authority has met the duty to cooperate and meets

legal requirements. If so he will then identify issues and matters that need further examination to ensure that the Plan is 'sound'. This is likely to include holding hearings. The Inspector controls the examination process from start to finish and will decide the programme and timetable for it, including who will be invited to appear at the hearings. A Programme Officer, Christine Self, has also been appointed and she will support the Planning Inspector in running the Examination and be the first point of contact for any enquiries.

Her contact details as well as further information about the Examination and the timetable, will be on the Authority's website as it becomes available. Following the closure of the hearings, the Inspector prepares a report to the Authority, which may include changes to the Local Plan, with recommendations. If 'main modifications' to the Plan are needed, there will be a further round of consultation on them.

**LIMITED TICKETS AVAILABLE**

**Dulverton and District Tennis Club Presents**

**R O D S T E W A R T**

**HEAR ALL THE HITS AND MORE! FROM THE UK AND EUROPE'S NUMBER ONE TRIBUTE OF ROD STEWART**

**MAGGIE MAY DON'T YA THINK IM SEXY TONIGHTS THE NIGHT YOUR'E IN MY HEART AND MANY MORE!!!!**



**THE ROD STEWART EXPERIENCE**

**Supported by Crash Course for Ravers**

**Sponsored by Seddons, Tantivy and Dulverton Pharmacy**

**Sunday 24th July 2016 from 5pm**

**In the grounds of Knackershole Barn, West Knowle, Dulverton**

**Bring your own chairs/rugs (but no tables or picnics)**

**BAR** **Tickets £15. Regrettably no children under 15** **FOOD**

**Dogs not permitted**

**Tickets available from Tantivy and Post Office, Dulverton or Hartnoll Hotel, Tiverton or contact**

**RICHARD ARCHER . 01398 324 160 . [archer@hotmail.co.uk](mailto:archer@hotmail.co.uk)**

**YVONNE MOORFOOT . 01398 323 529 . [yvonnemoorfoot@hotmail.com](mailto:yvonnemoorfoot@hotmail.com)**



# KFBS LTD

**ARCHITECTS & SURVEYORS  
PROJECT MANAGEMENT  
BUILDING REGULATIONS  
PLANNING & DEVELOPMENT  
BUILDING CONTRACTORS**



• RESIDENTIAL & DOMESTIC PROPERTIES • LISTED & AT RISK BUILDINGS  
• HOSPITALITY & LICENCED PREMISES • COUNTRY HOUSES & HOTELS  
• AGRICULTURAL/EQUESTRIAN • INDUSTRIAL & COMMERCIAL

FROM INITIAL CONCEPT THROUGH TO FINAL COMPLETION  
FREE INITIAL ADVICE AND ESTIMATE

## 01823 666 223

RIBA   RICS

[www.keithfarmer.co.uk](http://www.keithfarmer.co.uk)

## Acorn Antiques



Bespoke Upholstery – Decorative Antiques – Fine Art

Acorn Antiques, 39 High Street, Dulverton, TA229DW,  
01398 323286, [www.exmoorantiques.co.uk](http://www.exmoorantiques.co.uk)

## PHOTOGRAPH COMPETITION - The Changing Moods of Porlock Marsh

Porlock Marsh Vision Group is launching a photographic competition of photos inspired by Porlock Marsh.

Clare Reid, Project Manager said: "If you are inspired by Porlock Marsh then here's your chance to enter our photographic competition. We are looking for photos that capture the spirit of Porlock Marsh in all its different moods and weathers, its dynamic, changing landscape, and how people enjoy the Marsh. We want people to tell us what inspired them to take the photo, and why it is special to them. There are some great prizes to be won.

"As well as people submitting recent photos inspired by Porlock Marsh, we're also interested in historic photos showing how it's changed over time, particularly how it has changed in the last 20 years since the breach. We'll be organising an exhibition of the best photographs at the end of the competition, and it would be great to also have some older pictures.

"If you've got any old photos that you think might be suitable then please get in touch."

There are five categories:

Landscape and heritage, Wildlife, People

Plus there are two categories for the best photograph of any aspect of Porlock Marsh taken by a child 11 years and under and 12 to 18 years old. The top 5 photographs in each category will be judged by a local panel on their wow factor and how they tell the story of Porlock Marsh.

The competition runs until 30 Sept 2016 and is open to amateur and semi-pro photographers. Entrants can submit up to 5 entries.

To submit and for terms and condition go to [www.exmoor-nationalpark.gov.uk/porlockmarsh](http://www.exmoor-nationalpark.gov.uk/porlockmarsh). Please take care when taking your photographs, keep to the footpaths and check the tide times before visiting Porlock Marsh as some paths and the boardwalks are submerged at high tides.

Porlock Marsh Vision Group. Contact Clare Reid, Porlock Marsh Project Manager, email: [clare.reid@clarereidconsultancy.co.uk](mailto:clare.reid@clarereidconsultancy.co.uk), or the Porlock Parish Council clerk, Chris Fitzgerald

### Background

The Porlock Marsh Vision is a partnership project promoting the conservation and enjoyment of Porlock Marsh. The project is being undertaken in partnership with the two main landowners - Porlock Manor Estate and the National Trust, along with Porlock Parish Council, Natural England, and Exmoor National Park Authority.

The project is being delivered through funding from the Exmoor National Park Partnership Fund, with match funding from Porlock Parish Council, the National Trust, and the South West Coast Path Association.

Porlock Marsh is located at the eastern end of the Exmoor coastline. Information boards about the Marsh including suggested walking routes are situated outside the Porlock Visitor Centre, and in the car park at Porlock Weir. There are some great prizes to be won, including A rock pool guided walk with coastal wildlife expert Nigel Phillips, together with a copy of his Finding Rockpool Wildlife field guide. A one hour photography session for two at the Exmoor Hawk and Owl Centre with Rod Smith and his owls. A voucher for a watersport session with Exmoor Adventures worth £35 and more... Thanks to all those who donated prizes - Exmoor Hawk and Owl Centre, Exmoor Adventures, Porlock Visitor Centre, Nigel Hester at National Trust, and Nigel Phillips.



**JOHN FRENCH**  
(Plumbing and Home Improvements)

**Karslake House, Winsford,  
Minehead, TA24 7JE.**

All aspects of plumbing carried out at affordable rates.

Full Bathroom and Kitchen installation service.

(Call for a free estimate)

**No job too small.**

**Tel: 01643 851215**

## EBB 'N' FLO DRAINAGE

24Hr Emergency Drain Clearance

CCTV Surveys - Excavation and Repair

'No dig' Drain Re-lining - Installations

Pitch Fibre Repairs - High Pressure Water Jetting

**0800 838 425 / 07875 977 930**

Office: 01398 323695 Email: [info@ebbnflo.net](mailto:info@ebbnflo.net) Website: [ebbnflo-drainage.co.uk](http://ebbnflo-drainage.co.uk)

# Bogtastic 2016

Following on from last year's successful event which was attended by more than 400 people, Bogtastic 2016 takes place on Tuesday 26th July from 10am to 4pm in and around Simonsbath.

This free family event is a fun adventure day celebrating Exmoor's wildlife, moorland and heritage with many activities and displays. In Simonsbath, the River Barle flows past the historic water-powered sawmill, under the old stone bridge and by a meadow, along a beautiful moorland valley. Here you can play games and go stream dipping to find out about the river's wildlife - fish, otters, birds, bats and creatures you've never seen - it's a great place for a picnic too. Take a minibus up the hill to where the sky larks sing at Blackpitts and explore the bogs full of multi-coloured mosses.

Held during UK National Park's Week, Bogtastic is the South West's biggest and best bog festival. This 'drop in' event will feature the Bogstacle course, live bats, the opportunity to visit one of the South West's last remaining operational water powered sawmills, and lots more all-weather and undercover activities. There is something for everyone! It is free entry, with toilets and food on site and locally. Bring your wellington boots and dress for any weather - there is shelter in case it tries to rain. See you at the welcome tent! Entrance is free, although some activities may request a small charge. For further information on Bogtastic please contact: Lynmouth National Park Centre on 01598 752509 or visit [www.exmoor-nationalpark.gov.uk](http://www.exmoor-nationalpark.gov.uk) or the facebook page [www.tinyurl.com/Bogtastic16](http://www.tinyurl.com/Bogtastic16).

## BRUSHFORD PARISH HALL



SOMERSET'S

**VitalSigns®**

**THURS 7 JULY**  
**6.00 - 7.30PM**  
**VITAL SIGNS**  
**CONSULTATION**

What should the priorities for local giving be?

Enter along to our consultation and tell Somerset Community Foundation where charitable funding is needed in your area

somerset  
COMMUNITY FOUNDATION

We want your  
views!

Opportunity to  
influence  
where charitable  
funds go

Thursday 7 July  
6.00 - 7.30pm

Brushford  
Parish Hall  
TA22 9AH

For anyone who  
cares about their  
local area

VITAL SIGNS  
Run by  
Somerset Community  
Foundation

Phone: 01274  
444 4444444



## Exmoor Plumbing

**Reliable Plumber no job too small**

**Radiators, cylinders, tanks, bathroom  
suites, taps, ballvalves, washers, showers,  
soilpipes, wastepipes, gutters.**

**All plumbing work covered**



**01984 639629 / 07970 632 114**

**SPECIAL OFFER!**  
**3 FOR 2**  
**ON CARPET**  
**CLEANING\***

**Chem-Dry**  
**Devon & Somerset.**

*Your local carpet and  
upholstery cleaners*

**Call us for a FREE no obligation quote**

**\* 01643 804544 \* 01398 341938 \***

[info@chemdrydands.co.uk](mailto:info@chemdrydands.co.uk)

\*Have three carpets cleaned and get the smallest one cleaned for free to the same specification. Terms and Conditions apply





# CHIMNEY SWEEP

NACS REGISTERED  
CLEAN AND EFFICIENT  
FULLY INSURED/ CERT ISSUED  
COWLS AND BIRDBUARDS FITTED  
WOODBURNERS REFURBISHED  
POWER SWEEPING  
CCTV CAMERA SURVEYING

PHONE IAN

TEL : 01984 640893

MOBILE : 07502099323

## GERALD DALE

**General building work  
undertaken**

Landscape Gardening  
Stone Walling  
Patos



For friendly reliable service  
ring Gerald on  
01398 323 089  
07971 395 689  
E: lindadale0508@gmail.com

## WCI Ltd

Sewage Treatment Solutions

Septic tanks & Soakaways  
Sewage treatment plants  
Reed beds & EA Permits  
Rectification & servicing  
Home Buyer surveys

RING TODAY FOR YOUR FREE  
SITE VISIT AND QUOTATION

01984 623404

[www.reedbeds.com](http://www.reedbeds.com)

Family run with 27yrs experience

## *Jamie Williams* *Painters & Decorators*



*All aspects of  
Professional Painting & Decorating  
Exterior, Interior, Paper Hanging  
Coving and Wall Tiling*

**Tel: 01984 640181**

**Mob: 07766 917137**

*For a FREE estimate call Jamie*

*Email: [jamiethedecorator@yahoo.com](mailto:jamiethedecorator@yahoo.com)*

# THREE LITTLE PIGS

## Straw Bale House

*Continuing on from our story in May/June issue...*

When you first think of Straw Bale Houses your thoughts may turn to the dangers of Rats and Fire. Yet because bales for building are always coated in Lime Render they are vulnerable to neither.

They're eco-friendly, warm and a possible solution to affordable housing. In the words of a Devon straw bale supplier – who have an amusing Malapropism on their web site – straw bales for building are becoming a popular alternative to rational methods.

Justin and Linda Tyers are building with Straw Bale at Exton and would like to hear from individuals or families interested in volunteering to put the walls up, have some fun ... and learn with them along the way. They need you sometime during August. If you'd like to register your interest and be informed of the exact dates nearer the time email 'Straw Bale Dates'; to [justin@justintyers.plus.com](mailto:justin@justintyers.plus.com). Justin has a blog you can follow at: [justintyers.co.uk/blog](http://justintyers.co.uk/blog)



Timber frames are not always used in Straw Bale building – but Justin and Linda have built a corker! You're welcome to visit their site to have a look at it anytime.

## Brett Wright Joinery

Personalised Hand-made Kitchens,  
designed and made in Dulverton

Bespoke Hardwood Joinery –  
staircases, furniture, doors

Conservation and Restoration for  
listed buildings

**[www.brettwrightjoinery.com](http://www.brettwrightjoinery.com)**

41a Northmoor Rd, Dulverton, TA22 9DH

**01398 323211 / 07977 786342**

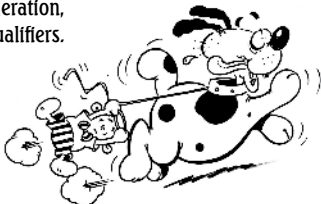


Exmoor Foxhounds Supporters Club

## Terrier, Lurcher and Kennel Club Companion & Family Dog Show Sunday 28th August 2016

Melcombe, Exford TA24 7LU

By kind permission of Mr & Mrs C Kirby  
Countryman's Weekly,  
National Working Terrier Federation,  
Stonelands Championship Qualifiers.  
Champion Terrier £50 prize  
Champion Lurcher £30 prize  
Terrier/Lurcher Racing  
Gun Dog Scurry/Dog Agility  
Miles Tea & Homemade  
Cakes Tent BBQ



Classes in all rings begin at 2.00pm. Gates open at 12.30pm. Parking Free!  
Entry fee £1 per entry in the ring. Gate cap - donation

Slee Blackwell  
Solicitors

Proudly supported by

Masons Kings



Schedule t: 01643 831 500 e: stay@stockleighexford.co.uk

[www.exford.org/events](http://www.exford.org/events)

**Don't forget!**

**The Exford Flower &  
Produce Show & Fete**

**Saturday  
27th August 2016**

**Live music on the  
village green with  
The Tone Valley Jazz  
Band from 1p.m.**

Show Marquee,  
Teas, Raffle, Stalls  
Bouncy Castle,  
Children's Sports  
Presentation of cups  
Auction of Produce  
Play and Picnic Area  
Contact for further  
information

**Anna Connell on  
01643 831634**

# Roy Hart Computers

## 01884 257288

[chris@rhcomp.co.uk](mailto:chris@rhcomp.co.uk)

computing without tears!

We can offer the **right** solution for the  
**first time & experienced** user

**Is your computer running slowly?**

Contact **Chris** for a MOT & service to keep it in tip top condition

**New Systems ● Upgrades ● Virus & Problem Solving**

*Wifi, Broadband and Smart TV connections*

**FAMILY FIRM SUPPORTING COMPUTERS IN YOUR HOME SINCE 1981**



**Tel: 01884 257808**

- **NEW BUILDS**
- **EXTENSIONS**
- **RENOVATIONS**
- **LOFT CONVERSIONS**

Jimsam View, Canal Hill, Tiverton, Devon EX16 4JE

**Tel: 01884 257808**

**Mobile: 07977 993526**

**Email: [nick6692@sky.com](mailto:nick6692@sky.com)**





# autofinesse

The automotive cosmetic repair specialists

## **... OOPS ! Have you scuffed, scratched, dented or scraped your car lately ?**

Typically 50% cheaper than  
traditional body shop repairs

No VAT to pay

10 + Years main dealer experience

High quality, cost effective,  
convenient service

Free estimates

Same day turn around in most cases

Insurance work welcome

**Barnsclose Industrial Estate  
Dulverton, Somerset TA22 9EA**

**Tel: 07497 889118**

**Email: [auto.finesse@outlook.com](mailto:auto.finesse@outlook.com)**



**autofinesse**  
The automotive cosmetic  
repair specialists



**AUTOMOTIVE  
TECHNICIAN  
ACCREDITATION**





## Edworthys Carpet & Window Cleaning

- Gutters ■ Facias
- Roof Cleaning
- Upholstery

Please contact Tom for a free quotation.

**Friendly, reliable and very professional**

**01398 323696 - 07984 057527**



## OIL BURNER SERVICE MAINTENANCE & REPAIRS

### PAUL JONES EXFORD



*with over 15 years experience*

OFFERING YOU THE BEST QUALITY  
OIL BURNER SERVICING AROUND

COMPETITIVE RATES  
BEST QUALITY SERVICE  
ALL REPAIRS UNDERTAKEN

*Call now on 01643 831384  
or 07811 600694*

## REGIS ROOFING & BUILDING

- Extensions
- Loft Conversions
- Painting & Decorating
- Timber Frame Structures
- Kitchens & Bathrooms
- Roof & Chimney Repairs

Phone Jason on  
**01643 705540**



# DAVID MILES

DRIVING SCHOOL

Read our 5 star reviews on Facebook

"Dave was excellent whilst teaching me to drive in just 3 months; supportive, encouraging and very patient. Puts even the most nervous of learners at ease. Would recommend him to anyone."



[facebook.com/davidmilesdrivingschool](https://facebook.com/davidmilesdrivingschool)

[david@davidmilesdrivingschool.com](mailto:david@davidmilesdrivingschool.com)  
07833 617 432

[davidmilesdrivingschool.com](http://davidmilesdrivingschool.com)

## Paul Priest

### LIME PLASTERING & STONework

- \* Internal & External Plastering
- \* Traditional & Modern Plastering
- \* Repairs & Complete Work
- \* Bespoke Stone Fireplaces
- \* Stone Walls, both Dry & Mortared
- \* Chimneys \* Pointing \* Stone/Tiled Floors
- \* Repairs or New Build \* Solid Fuel Stove Fitting

***ALL GENERAL BUILDING, PLASTERING &  
LANDSCAPING WORK UNDERTAKEN  
COMPETITIVE RATES***

**Contact Paul: 07870 454003**  
**[www.priestplasteringstonework.co.uk](http://www.priestplasteringstonework.co.uk)**

# EXE VALLEY PEST CONTROL

*All Types of Pest Control Services & Supplies*



National Pest Technicians Association

We are a local family business  
based in the Exe Valley.

Our services cover  
**RATS, MICE, MOLES, FLEAS,  
FLIES, WASPS, HORNETS,  
ANTS, BED BUGS**

in fact all types of crawling and flying insects.

We do not charge for collecting Honey Bees.

We can supply all types of pest control products at  
amazing prices, contact us for a free quote

01398 331195 07812 037716

Seven days a week

BAMPTON EX16 9JZ



## Chris Flay Plumbing & Heating Engineer



For Quality Workmanship  
and Guaranteed Success

RAYBURN

Boiler Servicing & Maintenance

Rayburn Sales & Service

Gas, Oil and Solid Fuel Installations

Oil Tank Replacement - 24 Hour Service

Domestic or New Housing Enquiries Welcome

STANLEY

A G A

25 YEARS  
EXPERIENCE



OIL BURNER CONVERSION

**NETHER STOWEY (01278) 732 732**

The Arches, South Lane, Nether Stowey, Bridgwater



Mary Wilkinson  
**McTIMONEY**

Qualified Practitioner  
providing

**GENTLE, WHOLE BODY TREATMENT  
for SPINAL RELATED PROBLEMS**

Back pain, Sciatica  
Neck/Shoulder, Whiplash  
& Headaches

**& ANIMALS**

Horses, Dogs, Farm Animals, Cats

HIGHER PUTHAM  
WHEDDON CROSS  
TA24 7AS

**Tel: 01643 841660**

## **ENJOY A HEALTHIER LIFESTYLE**

**Discover the Benefits of  
ALOE VERA with  
Forever Living Products**

The World Leader in  
the production of Aloe Vera

Our products contain 100%  
stabilised Aloe Vera gel

**Take a look at our exclusive  
range of Aloe Vera health and  
skincare products**



**Sandra Wilson**

Phone 01398 324687

E: [sandra.wilson@ylem.com](mailto:sandra.wilson@ylem.com)

Independent Distributor of  
Forever Living Products

Forever Living Products is a member of  
the Direct Selling Association Approval  
Code: Hoap0116



## **Exmoor Landscaping**



Local and reliable

Clearance and ground  
works

Stonewalling and steps

Patios and ponds

Fencing and treework

Turf supplied and laid



**Tel: 01984 640530**

**or Mobile: 07974 141790**

**or visit [www.exmoorlandscaping.co.uk](http://www.exmoorlandscaping.co.uk)**

## Exmoor Young Voices need your help!

Exmoor has the poorest road, rail and digital communications in the country, West Somerset is top of the league for 60 to 74-year-olds, 1,000 of its 5,000 houses are empty. Young people who want to stay drift away. Exmoor Young Voices, with the support of the National Park, are creating opportunities to help young people continue living and working here. They've been well received at the Consultative Forum of Parishes and Trusts, the Rural Housing Network, the Houses of Commons and Lords, BBC and ITV, outlining the problems for young people:

- \* housing - all the Young Voices either live at home, unable to afford to do otherwise, or move away reluctantly
- \* affordable housing neither affordable nor available for single young people
- \* wages in relation to rents
- \* digital access and communications, especially for on-line returns, business, agriculture, and social enterprise
- \* employment
- \* transport for work and local activities.

Their solutions to the housing crisis include student-type starter rooms, starter flats for young workers, self build, homeshare.

Their three years' report, seeking solutions, can be found at 'Exmoor National Park Young Voices' alongside their experiences of life on Exmoor. Facebook is 'Exmoor Young Voices' and Twitter @ExmYoungVoices.

How can you help? Hastoe Housing have given us £600 so that we can employ a local young person to drive the Voices solutions forward. We need more money to do that. If you know a young person who would like to join our Network contact Will Lock will.lock2@hotmail.com or Marion Silverlock marionsilverlock@btinternet.com



**Liam Jefferson**  
*Tree surgery and Landscaping*



- Tree surgery
- Landscaping
- Fencing
- Hedge trimming
- Gardening & Strimming

20 years experience in providing a variety of high quality, value for money, country and garden services.

Tidy and professional service with high standards of customer care. Free quotes

I'm based at Dulverton and cover Exmoor, West Somerset, the Quantocks, the Blackdown Hills, Mid and North Devon

**07796 521037**  
**01398 324585**

## KEITH JONES

### AGS Home Improvements



Local consultant for over 30 years  
giving specialist advice for  
people like you



Supplying  
**UPVC WINDOWS, DOORS, PATIO DOORS,  
CONSERVATORIES, PORCHES AND EXTERNALS**

Most products available in  
**WHITE, MAHOGANY OR GOLDEN OAK**  
**ALSO OTHER TRADITIONAL COLOURS AVAILABLE**

1000's of installations locally  
Contact Keith for friendly advice on all your requirements.

**01643 831568**

**or e-mail lindamjones@mypostoffice.co.uk**

Daytime or Evening.



## Exmoor BookBinding

01643 841116

sarah@the-burns.com

**Repairs & Restoration to  
all your favourite books.**



Albums, Folios  
Scrapbooks &  
Journals  
made to order.



*A bespoke hairdressing salon,  
creating naturally beautiful  
hair.*

*Contact Ruth and Lucy:  
01398 323784*

## SEW 'N' SEW

*Curtains & Soft  
Furnishings*



Quality hand sewn made to  
measure curtains, blinds, pelmets,  
cushions, bedspreads & bed  
valances

Curtains adapted and altered to fit  
Clothing alterations

Curtain poles, tracks, venetian and  
roller blinds

Range of Fabrics available

**Belinda Hopkins**

10 Barnsclose,  
Dulverton, Somerset,  
TA22 9DZ

sew\_n\_sew@hotmail.co.uk

**01398**

**324 053**



Specialist in  
Timber Craftsmanship

- Purpose made Windows ▪
- Double & Single Glazing Doors ▪
- Staircases ▪
- Listed Building Work ▪
- All types of Hardwood & Softwood ▪

Tel: (01398) 331231

Station Rd, Bampton, EX16 9NG

Email: [info@woodwisejoinerydevon.co.uk](mailto:info@woodwisejoinerydevon.co.uk)

[www.woodwisejoinerydevon.co.uk](http://www.woodwisejoinerydevon.co.uk)

**PARISH AND TOWN COUNCILS**

Brompton Regis P.C: Ms J Scott	brpcclerk@gmail.com	01398 371464
Brushford P.C: Clerk: Clive Knight,	cliveknight@me.com	01398 331917
Cutcombe P.C: Clerk: Marlene P Allinson	cutcombeclerk@btinternet.com	01643 708810
Dulverton T.C: Sec: Miss A. Rose	clerk@dulvertontowncouncil.co.uk	01398 324561
East Anstey PC: Clerk: Mrs Jill Larcombe	eastansteypc@yahoo.co.uk	01884 252647
Exford P.C: Clerk: Jane Laycock	parishclerk@exford.org	01643 831067
Exmoor P.C: Clerk: Verity Vigars	exmoorparishcouncil@gmail.com	01643 831511
Exton P.C: Clerk: Andrew Moore	clerk@extonparishcouncil.co.uk	01643 851694
Upton P.C: Clerk: Mrs P Purvis	uptonparishclerk@hotmail.co.uk	01398 371548
Winsford P.C: Clerk: Verity Vigars	winsfordparishcouncil@gmail.com	01643 831511
Withypool & Hawkridge P.C: Clerk: Verity Vigars	withypoolhawkridgeparishclerk@gmail.com	01643 831511

**LOCAL CHURCHES AND CHAPEL CONTACT NUMBERS**

All Saints Church, Dulverton: Rector Andrew Thomas	01398 323018
Brompton Regis with Withiel Florey, Upton and Skilgate: Rector Andrew Thomas	01398 323018
Brushford: Rector Andrew Thomas	01398 323018
Exmoor Benefice: The Reverend David Weir, The Rectory, Exford, TA24 7LX	01643 831330
Catholic Church: Priest: Father Michael	01643 702201
Dulverton Congregational Church, Chapel St: Minister:	01398 323744
The Traditional Anglican Church: Loxbear, Priest Reverend Aird	01769 581042
Exmoor Benefice Choir: Mrs B. Staples	01643 851396

**ARTS**

Dulverton Art Group: Sec: Mrs G Rose, 2 Stable Mews, The Square, Witheridge	01884 860495
Dulverton Camera Club: Sec: Peter Main, 4 Valley View, Morebath, Tiverton, EX16	01398 331556
Dulverton Players: Chair: Les Silverlock	01398 341850

**SPORTS CLUBS**

Anstey Short Mat Bowls: Chris Dale	01398 341615
Bridgetown Cricket: Sec: Mr. D. Sherring, Mid-Wicket, Bridgetown, Dulverton. TA22 9JN administrator@bridgetowncc.co.uk	
Brushford Short Mat Bowling: Sec: Mr M I Browring, Brushford, Dulverton	01398 324162
Cutcombe Cricket: Sec: Mrs Maria Adams, 1 The Beeches, Wheddon Cross	01643 841036
Dulverton Angling Assn: c/o Pat Veale, 9 High St., Dulverton, TA22 9HB	01398 323409
Dulverton Badminton Club: sec Rachel Gliddon	01398 323831
Dulverton Cricket Club: Robert Dubery	01398 323474
Dulverton Cricket Club, Colts: Mrs Christine Dubery	01398 323474
Dulverton & District Tennis Club: Yvonne Moorfoot, 3 Lamb Back, Dulverton	01398 323529
Dulverton & Exmoor Squash Club: Membership Sec: Chris Winter. chriscwin@aol.com	07710 046107
Dulverton Jnr. F.C: Sec: Mrs Christine Dubery	01398 323474
Dulverton Netball Club: Sec Lindsay Smith, 25, Nicholas Close, Brushford	01398 323834
Dulverton Snooker: Sec: Mr. D. Bodger, 39 Fishers Mead, Dulverton, TA22 9EN	01398 323899
Dulverton Sports and Social: Chair: Carl Hooper	01398 324494
Dulverton Sportsfield Management: Adrian Smith	01398 323834
Dulverton Senior Table Tennis: Richard Archer	01398 324160
Dulverton Town F.C: Sec: Mr. J. Atkins, 1 Exebridge, Dulverton. TA22 9AY	01398 323787
Moorland Hall Sports: info@wheddoncross.org.uk	
Tai Chi: Instr. Andrew Blabey RITCUGB andrewbee@tiscali.co.uk	01398 332104
Wimbleball Fly Fishers: enquiries@fishingthewest.co.uk	

**PRE-SCHOOL GROUPS**

All Saints School & Nursery: Head: Mr J Weedon	01398 323231 & 01398 323223
Anstey Parent and Toddlers Group: Jodie Thomas	01398 341845

**SCHOOLS**

All Saints C of E School - Fishers Mead TA22 9EN	01398 323231
Cutcombe C of E First School - Wheddon Cross, TA24 7DZ	01643 841462
Dulverton Middle School - Barns Close West, TA22 9EE	01398 323223
Brompton Regis Toddlers: Mrs. S. Julian, Court Place Farm, Skilgate	01398 331031
Dulverton Children's Centre - All Saints School, Fishers Mead TA22 9EN	01643 700030
Dulverton Family and Toddlers Group: Wendy Gunn	01398 324395
East Anstey Primary School: - East Anstey, Tiverton, Devon, EX16 9JP	01398 341369
Little Owls Nursery - All Saints School, Fishers Mead TA22 9EN	01398 324360
Wheddon Cross Under 5's: Supervisor: Mrs. S. Matravets, Shute Cl., Cutcombe	01643 841008

**WOMEN'S ORGANISATIONS**

Anstey W.I. President: Mrs. C Wood	01398 341472
Brompton Regis W.I. Sec: Mrs. P. Beecham, Rose Cottage, Brompton Regis	01398 371407
Cutcombe & District M.U: President, Pam Anson	01643 851616
Cutcombe & District W.I. Mrs. Pam Anson	01643 851616
Dulverton & Brushford M. U.: Mrs A. Gregory, 22 Jury Road, Dulverton, TA22 9DU	01398 323587
Exford Moorhens: Chairman: Mrs. I. Collett	01643 831016

**YOUTH ORGANISATIONS AND ACTIVITIES**

Bampton Scouts/Cubs/Beaver748s: Tony Weiss	01398 331901
Dulverton & District Young People's Project: Coordinator: Ms Jude Atkins	01398 324169
Dulverton Ballet: Mrs Wightmore, Flat 3, Easter House, St. Andrews St. Tiverton	01884 253999
Exmoor Community Youth Club: Organiser Laura Tasker, Fridays 6 - 8 pm	01643 831125

**OTHERS**

Abbeyfield House	01398 324136
Brushford Voluntary Lift Scheme: Chair: W. Gillison	07528 326880
Brushford Luncheon Club: Treasurer: Michael Willison	01398 324509
Care Direct for help and advice. <a href="http://www.somerset.gov.uk">www.somerset.gov.uk</a>	0300 1232224
Cutcombe Flower & Produce Show: Sue White	01643 841142
Dulverton Action Group: Magdalena Harding	01398 323 785
Dulverton & Bampton Luncheon Club (Ex-Probos): Organiser: Terence Dapp <a href="mailto:terrydapp@aol.com">terrydapp@aol.com</a>	01398 332252
Dulverton & District Civic Soc: Kathy Currie, Bramble Bank, Ellersdown Lane, Brushford, Dulverton TA22 9BH	07493 518350
Dulverton & Southern. Exmoor Twinning: Chair: Steve Ford, Dulverton	01398 323016
Dulverton Bridge Club: Sec. Brian Hughes, <a href="http://www.Bridgewebs.com/dulverton">www.Bridgewebs.com/dulverton</a>	01398 331219
Dulverton Dance:	01398 341850
Dulverton Ballroom Dance: Sec: Mrs Christine Dubery	01398 323474
Dulverton Development Forum: Sec: Mrs J. Ross	01398 323818
Dulverton Films: Jan Ross	01398 323818
Dulverton Fellowship for Mental Health: Marion Silverlock	01398 341850
Dulverton Gardening Club: Roger Hammond	01398 323954
Dulverton Group Exmoor Society: Sec: Dr Ken Mills	01398 331482
Dulverton Vintage Films: Magdalena Harding	01398 323785
Exford Croquet Club: Chair: Connie Heywood	01398 341556
Exmoor Patient Group: Chair: Sandra Wilson, W Nightcott, Dulverton TA22 9RT	01398 324687
Exmoor BeeKeepers Association: Sec: Caroline Ralph	01643 851622
Exmoor Community Bus Assn: Sec: Mr. D. Perry, 4 Bath Meadow Drive, Dulverton	01398 324059
Exmoor Pony Centre: Ashwick, Dulverton, Somerset, TA22 9QE	01398 323093
Exmoor Pony Society: Sec: Sue McGeever, Woodmans, Brithem Bottom Cullompton, Devon EX15 1NB	01884 839930
Exmoor Rotary Club: Humphrey Berridge (PRO), Station Hse, Luke St, Bampton	01398 332324
Royal British Legion Dulverton: Peter Donnelly	01398 323030
Tiverton Model Aero Club: Sec: Mr. P Veale, 9 High St., Dulverton TA22 9HB	01398 323409
U3A Exmoor: Yvonne Moorfoot, 3 Lamb Back, Dulverton	01398 323529
West Somerset Advice Bureau: Dulverton Medical Centre, Tues 10-12	01643 704624



Home Reared  
Free Range  
Pork, Lamb & Beef

Small beef box 7-8kgs

1/2 pig including sausages 22kgs

1/2 lamb box 9-10kgs

or try a mixed box  
packaged ready for  
your freezer

Local delivery or collection

Give us a ring on:  
01643 851298



A family run  
shop with a  
big Exmoor  
welcome!



Local produce, fine foods,  
organic fruit & veg, organic bread,  
cakes & pies. Tea room.

Delicious freshly prepared food to  
take away. Have you tried our ever  
popular breakfast baguette?

Open from 8.30am for coffee.

Fresh meat, bacon, sausages &  
ham supplied by Kendle Farm

5a Bridge Street,  
Dulverton TA22 9HJ  
01398 323878

Email [sales@kendlefarm.co.uk](mailto:sales@kendlefarm.co.uk)  
Kendle Farm, Exton, Dulverton TA22 9LA

Find us opposite the Bridge Inn

Folding Chairs/Table Hire  
Licensed Waste Carrier  
House Clearance  
Seasoned Logs  
Bric a Brac  
Valuations  
Antiques

Brushford  
**Bizarre**

**Tony Skilton**

Carnarvon Arms Garage

Brushford TA22 9AG

Tel: 01398 324 150

Mob: 07802 357 962

Email: [taskilton@aol.com](mailto:taskilton@aol.com)



## Need your Chimney swept or thinking of having a Log Burner fitted?

It could be damaged or blocked with birds nests. If so it could be a fire risk and may lead to deadly Carbon Monoxide fumes leaking into your home. Now is the time to get it checked.

We cover North Devon, West Somerset, Exmoor, North Cornwall. We have full Public Liability Insurance and certificates are issued to confirm work.

### The services we provide are:

- Full sweeping service to all chimneys
- including Rayburns, Agas and Stanleys
- H.E.T.A.S. registered installer of Wood and Multifuel burners.
- Service and repairs
- Gas and smoke detectors supplied and fitted
- Chimney stack repairs
- Supply and Fit all types of Cowls, Bird guards and chimney pots



Follow us on our Twitter and Facebook pages for more information and offers