

EXMOOR NEWS

Bringing community news across southern Exmoor since 1985

FREE

September/October 2020

Bampton
Bridgetown
Brompton Regis
Brushford
Bury
Cutcombe
Dulverton
East Anstey
Exebridge
Exford
Exton
Hawkridge
Luxborough
Molland
Morebath
Oakford

Simonsbath
Skilgate
Upton
West Anstey
Wheddon Cross
Winsford
Withiel Florey
Withypool
Wiveliscombe





**New Build
Extensions
Renovations
Loft Conversions**

Tel: 01398 323789

Mobile: 07837 729484

Email: mikecottrell20@gmail.com



TONGDAM
Thai Restaurant

**NEW OPENING TIMES
OPEN 6 EVENINGS
LUNCH SATURDAY & SUNDAY ONLY
CLOSED TUESDAY**

26 High Street | Dulverton | Somerset | TA22 9DJ
01398 323 397 for reservations

www.tongdam.com



EXMOOR NEWS

COVERING SOUTHERN EXMOOR

What a year has this been so far! No one could have ever predicted the events that have occurred over the last few months. We lost all the community and charity fund raisers, but they are slowly beginning to return. Look out for a couple of competitions in this issue. We have tried to keep you informed with the latest Covid help available from various community organisations, which we continue to do, and keep you entertained. From this issue, we have a new columnist, Diane Trembath, who will be providing an insight into life on Exmoor, as well as our regular reports from Buster the dog and Napoleon from Webbers. Do let us know your thoughts.

Our next issue will be covering November and December - wouldn't it be lovely to be able to have the Christmas events and fairs? As with everything, see how it goes, but if you have anything you'd like to share, please send it to us.

Keep safe.

Best wishes, Ceri Keene and Claire Savill

E: exmoornews@gmail.com T: 07497 914441 W: www.exmoornews.co.uk

Post: The Old Stores, Brushford, Dulverton, Somerset, TA22 9AH

We take our responsibility to maintain high editorial standards seriously.

Should an error occur please do not hesitate to contact us.



Cover image 2020: © Michael Pilley.

If you would like to see your photo on the cover send us a low resolution copy for our library. If used we will ask for a high resolution version and you too could be in print.



The deadline for the November/December issue of the Exmoor News is

Thursday 1st October 2020

Printed by Brightsea, Exeter



EXMOOR NEWS MAGAZINE ADVERT SIZES – Prices may be subject to change. 3,000 copies printed

A5 whole page (123w x 188h mm)	Mono @ £68 per issue	Colour @ £91 per issue
A5 half-page (123w x 92h mm)	Mono @ £34 per issue	Colour @ £46 per issue
A5 portrait quarter page (60w x 92h mm)	Mono @ £17 per issue	Colour @ £23 per issue
A5 landscape quarter page (123w x 43h mm)	Mono @ £17 per issue	Colour @ £23 per issue

Whilst every effort is made to ensure the accuracy of the information in this magazine, no liability can be accepted by the editors and publishers for any loss, damage or injury caused by errors in, or omissions from, the information given. Please also note that in the publication of trade adverts, the editors do not guarantee the quality of services provided by any of these advertisers. The editors reserve the right to decline to publish any item and to amend or shorten material. Opinions expressed are not necessarily those of the publisher/editor. All advert bookings are subject to our terms and conditions see www.exmoornews.co.uk/payments.

Under the Data Protection Act, we have a legal duty to protect any information we collect from you. We take appropriate security measures to safeguard your data and apply security standards and controls to prevent any unauthorised access to it.



We are here to help you when you need it for companionship, shopping, household tasks, gardening, form filling, dog walking etc.


To arrange a visit call the helpline co-ordinator.


Good Neighbours are still very much here and here to stay!
Good Neighbours WILL be continuing to support those in the local community in need of our help. If any volunteer is unable to continue to help please can they let the co-ordinator know (01398 324211 sandracollett@btinternet.com) so that another volunteer can be assigned to their client/s.


07395 171409

Mon- Fri 10am to 4pm

DULVERTON STARLIGHT

Dulverton by Starlight events will be a bit different this year - no full event due to Covid. 


Lots of fun things to do online... details coming soon. 

Watch social media for more information. 

From the Starlight Team 

www.dulvertonbystarlight.co.uk

Email: info@dulvertonbystarlight.co.uk

 Dulverton by Starlight

Thinking of having your book published?

We specialise in getting published a wide variety of books, from autobiographies, poetry, art books, photo memory books etc. typing manuscripts and also video presentations... and more.

Need design and print services?

Contact us to find out more



E: exmoornews@gmail.com

T: 07497 914441

VINTAGE FILM CLUB

(if we are able to meet... Look out for posters!)

Wed 9th September

WHISKY GALORE!

starring Basil Radford & Joan Greenwood (1949)

Wed 14th October

THOROUGHLY MODERN MILLIE

starring Julie Andrews & Mary Tyler Moore (1967)
(or **WHISKY GALORE!**)

2.30 pm at Fishers Mead Community Centre

DULVERTON ACTION GROUP

Litter-picking (3rd Sunday)

Sunday 20th September

Sunday 18th October

10.30 meet by the Heritage Centre

Everyone welcome and all kit supplied

This is the new radio streaming service for the Exe Valleys in Somerset and Devon.

Exestream Radio

Exmoor Studios CIC are delighted to announce that Exmoor National Park have approved their application for change of use of the former NatWest bank building in Dulverton into a studio complex. Subject to completion of lease negotiations we will be installing a community radio station, a recording studio and black box studio theatre.

Health Walks

Due to the COVID-19 virus & 'Lockdown', the Dulverton Health Walk Group were obliged to suspend their activities between 10th March & 7th July. Restrictions are now easing & the Group are meeting once again on a weekly basis at 10am on a Tuesday. The Walks are not strenuous and take approx. 1 - 2hrs. We do stop now & then, to appreciate the beautiful countryside that we are blessed with. If you are at all interested in joining our very friendly Group then please contact Richard Archer on 01398 324160, 07773160222 or by email at :- archerr@hotmail.co.uk. We look forward to seeing you.



Sadly, despite hoping for otherwise, meetings for September or October seem very unlikely. When we can re-convene, we will be in touch with everyone.

Meanwhile we hope everyone is keeping safe and healthy, and sufficiently happy !

Exmoor U3A Committee

Figs Shop

2 Newton Square
Bampton
EX16 9NE
01398331420
07949 534687
info@figsshop.co.uk
www.figsshop.co.uk

DULVERTON TOWN HALL

Dulverton Town Hall's Thrift Shop to reopen soon

The shop, situated within our community hall building, is an important part of our charity bringing in much needed funds to help us maintain the Grade 2 listed building and continue to make improvements. Trustees had agreed to a shop refit before the lockdown and it will now take place over the next few weeks. The new layout will give the shop a bright and modern appearance and will also provide improved social distancing.

We are hugely grateful to our loyal volunteers who have helped clear out old stock and those who came to buy the good stock at our recent special sale days in the Lower Town Hall.

The shop will still offer the same unique atmosphere as before with many bargains. Donations will be welcome. Many of you have spent some of the lock down time clearing

wardrobes and cupboards. Please remember that we can only accept items which are fit for re-sale. Here is our slogan - 'Would you use it, wear it or buy it?' When the shop opens, we will have to limit donations each day. The maximum will be two sealed bags or boxes per person as, under current regulations, all donations must be quarantined for 72 hours.

The Thrift Shop is the envy of many local village halls as it plays an important part in raising money for the Town Hall, to help with the annual costs of electricity and insurance and to help fund the improvements and users of the Town Hall benefit from reduced hire charges.

Last year the Thrift Shop raised well over £10,000 through people's donations and hard work by the volunteers.

New volunteers will also be welcomed - please contact Chris Dubery on 01398 323474 or Shuna Bland.



Day Excursions

Day Excursions will resume from September!

*some excursions may be cancelled as the attraction/venue may be closed due to Covid-19 restrictions, we hope to know more information soon.

Trelissick National Trust – Garden open only

Wed 9 Sept £16.00pp/ £28.00pp Non member

Wareham & Swanage

Thu 24 Sept £16.00pp coach only

Sidmouth Donkey Sanctuary & Sidmouth

Tue 6 Oct £14.00pp coach only

Truro Wed 7 Oct £16.00pp coach only

Tavistock Tue 13 Oct £15.00pp coach only

Westonbirt Arboretum & Tetbury (optional)

Thu 15 Oct £23.50pp

Abergavenny Market Day Tue 27 Oct £15.00pp coach only

Clarks Village or Wells Wed 28 Oct £13.00pp coach only

Snow White Panto Wed 30 Dec 2.00pm Adult £44.50 Child £40.00 Bristol Hippodrome

Please do not hesitate to call us or visit our website to request a
2020 brochure!

Tel: 01398 371 271 | Email: info@uptoncoaches.co.uk | www.uptoncoaches.co.uk

Sarah Blackburn died suddenly and unexpectedly on 14th July 2020.

In 2008, Sarah and Joseph moved to Brushford as part of a plan to work less and spend more time together. She turned a derelict building into a beautiful home and created a garden from nothing. She also welcomed the opportunity to get involved with the local community.

As Treasurer of the Brushford Parish Hall she worked with other Trustees to update their finance and governance systems. She led the process that resulted in the Parish Hall being awarded the highest 'Hallmark' rating by The Community Council for Somerset. As well as contributing to projects organised by other Trustees, Sarah arranged much of the funding and commissioning to renovate the car park and install an electric car charging point.

She supported other local charities including hosting parties for the Air Ambulance and Dulverton Leat Trust in the garden of her home. Sarah also worked on the

Boards of Minehead College and The Community Council for Somerset where her experience made her a significant asset.



Throughout her life, Sarah was generous in providing the emotional, intellectual and practical support that helped her family, friends and colleagues to achieve their ambitions and overcome difficulties.



Remote Therapies

Beauty & Wellbeing Clinic

A beauty salon situated just 1.6 miles from the historic charter town of Bampton, on the outskirts of Shillingford. Here at Remote Therapies we offer a range of treatments to suit all.

- | | |
|------------------------|------------------------|
| ~Waxing | ~Gel & Acrylic Nails |
| ~Eye Treatments | ~Dermalogica Skin Care |
| ~Eyelash Extensions | ~Massage |
| ~Manicures & Pedicures | ~CryoSthetics |
| ~Spray Tanning | ~Treatments for Men |

Free onsite parking

T: 07845 925907 E: remotetherapies@gmail.com w: www.remotetherapies.co.uk

Unit 2d, Fourwinds, Shillingford, Bampton, Tiverton, Devon, EX16 9AU



LEE RINGROSE
GARDEN & FIELD
SERVICES

Mowing - Ride-on mower
for large gardens

Paddock topping

Hedge cutting

Strimming

Weed control (licensed sprayer)

Call: 01398 371127 / 07764 410198

Email: leeringrose@ymail.com



FOUR SEASONS
PROFESSIONAL TREE SERVICES

All Aspects of Tree Surgery
Stump Removal

Crown Lifting Crown Reduction
Grounds Maintenance Grass Cutting
Hedge Cutting All types of Fencing
Wood Chip Seasoned Logs

General Garden Maintenance Turfing
Fully Insured Private & Commercial Customers
Soft Landscaping and Planting

Free Quotations

www.fourseasons-treeservices.com

Oliver Vernon

info@fourseasons-treeservices.com

01884 563021/07766168162

City &
Guilds
NPTC

Woods
Bar
& Dining Room

Good Pub Guides
National Wine Pub
of the Year
2010-2020

Situated in the beautiful
Exmoor National Park at
4, Bank Square, Dulverton,
Somerset, TA22 9BU
01398 324007

woodsdulverton@hotmail.com
woodsdulverton.co.uk

Making her mark

Sitting in Nicola Stewart-Smith's delightful cottage garden in Brushford, it is easy to appreciate the inspiration for the Devon-born maker's distinctive ceramics. The countryside, nature, and birds, in particular, feature strongly in the mugs, bowls and vases that she makes – under the name, Nicola Mary – in her studio opposite the cottage.

It is a blackbird that appears on the eye-catching mugs that Nicola makes under the umbrella of Throw for the NHS. This is a nationwide initiative, set up by the Print Pottery in Kent, through which potters dedicate one day a month to make items for sale, to raise money for NHS charities. At the time of writing, #throwfortheNHS had raised almost £12,600.

Nicola's working life, doing something she loves, may sound ideal but, for artists and makers across the country, Covid-19 has brought particular challenges. Craft fairs, which provide a vital opportunity to display and sell work, had to close, as did galleries and shops that normally offer another outlet. For makers like Nicola, who enjoy meeting customers, that can be hard.

'Most of our selling is now online,' she says, and in this she is supported by daughter, Dora, who designed the Nicola Mary website and takes care of the marketing side of things. Thankfully, open-air markets and fairs have reopened and Nicola is back at the weekly craft fair in Croyde, North Devon, on Thursdays, and at Dulverton Farmers' Market on the last Saturday of each month until September.

Nicola is entirely self-taught but her lack of formal training is in no way evident. She has a deep commitment to her craft

and is constantly exploring different ways of working; a current range of hand-thrown ceramics, for example, involves a 17th century Korean technique. Every aspect of her work, a combination of art and science, requires intense concentration, whether throwing by hand or on her wheel, cutting designs into clay, firing pieces in the kiln, or painting and glazing. It all takes place in the studio created by Nicola's husband David (of Exmoor Builders), with beloved spaniels, Splodge and Goose, invariably alongside; Nicola Mary really is a family affair.



David also restored an old farm building alongside the studio and the Piggery is now a small shop, where you can find a selection of Nicola Mary pieces; it's definitely worth calling in!

For more information about Nicola Mary and opening hours for the Piggery, visit www.nicolamarydesigns.co.uk

Diane Trembath

Books Bought

*Local-interest
Countryside &
Country-Sports
Book Collections
especially wanted.*



*Also Academic and general
libraries bought.*

Valuations undertaken

**Rothwell &
Dunworth**

Tel: 01398 323169

Email: info@rdbooks.co.uk

ROBIN ASHBURNER *The Flag Man*

*Local, National & International
Quality Flags for sale*

*Flagpoles supplied
Special flags made to order*




reddragon flagmakers

01398 323700

robinashburner@aol.com

www.reddragonflagmakers.co.uk



**Instrument Sales &
Repairs, Books, Sheet
Music, Gifts and much
more.....**

Rock House, 1 Jury Road, Dulverton
Telephone 01398 324164

www.oggiesmusic.com

Learn more: play better

Enjoy a group, Tuesdays in Dulverton
from 10am to midday. £8 per session

Strings, woodwind and keyboard
players are invited to join in
under professional direction.
(For players Grade VI plus)



Text or call 07525 811 534

Libraries new order-and-collect service proves popular

Hundreds of people have been making use of the new Somerset Libraries order-and-collect service which is now available in Dulverton.

The service allows people to use an online request form to receive a selection of up to 10 books, DVDs or Talking Books which staff pick out for customers, based on the types of authors or genres that are of interest to them.

Somerset residents have also been making use of the popular public computers which are also available in libraries that are open. Computers need to be pre-booked and are available for one-hour slots, with time built in for cleaning.

Councillor David Hall, Somerset County Council's Cabinet Member with responsibility for Libraries, said: "We are delighted that so many people have been enjoying our new order-and-collect service and coming into libraries to use the computers. Although browsing of shelves is not yet possible, we have had some encouraging feedback from people making use of our many online services, including books, audiobooks, magazines and newspapers, all available to download free of charge to library members.

"The videos that staff have been busy making are also proving a real hit, with thousands of engagements on Facebook, Twitter and Instagram and this is something we will be continuing to develop, even as the

lockdown eases"

The mobile library will also be back on the road from Tuesday 21st July and details of where and when the stops are can be found on the Somerset Libraries website pages.

Customers can return any items currently on loan to any libraries that are open, but customers are being encouraged not to make an unnecessary journey to do this. All current loans that would have been due back during the lockdown period have been extended to the end of August, and any overdue charges that customers might have incurred as a result of library closures due to COVID-19 have been waived. It is hoped that all Somerset libraries, with the possible exception of a few community-managed libraries, will be open again by mid-August.

The order-and collect request form is available via the Somerset Libraries website - www.somersetlibraries.co.uk or by contacting librariesmail@somerset.gov.uk. Somerset Libraries are also contactable by telephone on 0300 123 2224.

Full details of which libraries are re-opening, including their hours of opening and services available, can be found on the Somerset Libraries website and via their social media pages – search for Somerset Libraries UK on Facebook, @SomersetLib on Twitter and Somerset Libraries on Instagram.

had I think used the lockdown period to review what they wanted as each couple. In the main their budgets were up to about £250,000 (some above but not many).

On the ground what has been happening?

During the lockdown period we found the first 2/3 weeks was very much calming local clients down at the shock of a lock down.

From week 3 and 4 we found that the enquiries started to come in and then as each week passed this just grew and grew, to the extent that at the end of lockdown (13th May) we had over 850 viewing appointments to book in (for sales and rentals) across our region.

During the lockdown we carried out a lot of research both with our stats and enquiries, speaking with other agents across the UK and looking at their Data as well as speaking with well-known behavioural economists to try and get a feel of what might happen as and when we were allowed back out to work. Our prediction during this lockdown period was that as soon as we were allowed to reopen that we would be manically busy (which many laughed at) but in reality this has been absolutely spot on as a prediction.

VIEWINGS

July's viewing levels were 120% above those of July 2019 but 208% above the normal monthly average level of viewings.

FIRST TIME BUYERS

One of the real surprises for us during the first 3 / 4 weeks back at the front line was the number of local first time buyers actually out and about viewing (higher than I can remember for decades). Many

LOCAL V AWAY BUYERS –

A large number of our "Away Buyers" are in fact former locals moving back and in many of their own words "coming home" (many having moved away 10/20/30 plus years ago for work, partners etc).

Right now we have former locals (lived on Exmoor or very close North Devon and West Somerset area but want to live on Exmoor) from Australia, Singapore, California, London, Home Counties, Welsh Borders and much more besides.

HOW DOES THE MARKET COMPARE WITH ANY OTHER OVER THE PAST 36 YEARS

I started full time back in 1984 and have seem some pretty busy markets to be honest (as well as some really tough times during recessions) but I can honestly say that I have never been busier during this 36 year period. It is an interesting and highly active market at present but activity will decline in volume terms as we enter the late autumn and winter. I can't make any predictions for next year (unusually for me).

WHAT IS SHOWING THE GREATEST ACTIVITY

The whole of the market is strong at the moment (but some properties are faring better than others). The trend does also vary from week to week. Right now, the greatest activity viewing wise is properties with land between £600,000 and £1.35 million but perhaps helped by the fact that at Webbers Fine & Country we have had a run of instructions of some of the finest homes for sale in the area.

Having said that, other properties from £170,000 to £600,00 are also receiving multiple viewings if marketed and priced correctly, hence our viewing levels being so much higher than normally expected.

VIRTUAL TOURS

These have been a great success with some of our local Webbers Fine & Country properties receiving 3,000 to 5,000 individual hits per month. In the main people viewing are from within the UK but the number of viewings from Australia, Canada, USA, Hong Kong, Europe, Caribbean etc is not inconsiderable.

Some properties have already had sales agreed as purely a direct result of the 360 degree virtual viewings including overseas buyers from Australia that have been unable to physically view the property in person for obvious reasons. We have also had cases where a property was on the market previously with an agent and dismissed but the virtual tour provided by Webbers then made them rush down and physically view and offer on the property.

HOLIDAY HOMES

I have not had a chance to review latest stats (last year this accounted for a very small percentage of the housing sales and is the same every year – i.e. the figure is never actually where the public at large

or media think it is). Right now, Holiday homes are not a massive focus (though there are some very good and genuine buyers out there looking), it is still people wanting to buy to live in permanently but of course they are then a mixture of local and away buyers though, as indicated, there are a large number of former locals heading home.

STAMP DUTY

Of course the Government's decision to have a stamp duty embargo has been a positive move and has helped the market but in reality the activity we are seeing right now was already there, it's icing on the cake for buyers and helps reduce their costs but we were already flat out activity wise, even before the announcement.



Napoleon Wilcox

Head of Webbers Fine & Country
Somerset, Devon, Cornwall, London.
Dulverton Office 01398 323271
napoleon.wilcox@webbers.co.uk

Unable to pick up a regular copy of Exmoor News? You can get it posted to your door, wherever you live.



Contact us to find out more
E: exmoornews@gmail.com
T: 07497 914441



Exmoor Plumbing
Reliable Plumber no job too small
Radiators, cylinders, tanks, bathroom suites, taps, ballvalves, washers, showers, soilpipes, wastepipes, gutters.
All plumbing work covered

01984 639629 / 07970 632 114



KEITH FARMER BUILDING SERVICES LTD

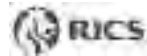
- ARCHITECTURAL DESIGN • PLANNING & DEVELOPMENT •
- BUILDING REGULATIONS • BUILDING CONTRACTORS • PROJECT MANAGEMENT •
- New Builds/ Conversions/ Extensions/ Commercial/ Industrial/ Listed Buildings •

FREE INITIAL ADVICE AND ESTIMATE

01823 666223



www.keithfarmer.co.uk



REGIS ROOFING & BUILDING

- Damp & Condensation Problems Solved!
- Loft Conversions
- Painting & Decorating
- Timber Frame Structures
- Kitchens & Bathrooms
- Roof & Chimney Repairs

Phone Jason on
01643 705540
jfmullett@aol.com



MADE ON
EXMOOR



www.exmoordistillery.co.uk

01398 323 488

When lockdown eases

SOUL WORKS
Magdalena Harding

**Past Life
and Inter-Dimensional
Wisdom Healer**



Free Drop-in Taster Sessions
(most) Fridays 1-3 pm
Fishers Mead Community Centre

Full private sessions available at home
Tel: 01398 323 785 Mob: 07929 761 958



Exmoor Rotary Club

We have not been able to have our weekly meetings at the moment, but the club has a monthly 'Zoom' meeting via the internet which keeps us all in touch. Also a monthly bulletin with additional information and photos is produced, and we try to keep our website and Facebook page up to date. We are very conscious of how much the various charities to which we normally contribute are suffering at this time from lack of donations, so members are donating money which they would have spent on Rotary lunches to a fund which will later be able to go to Children's Hospice South West, a charity which we have helped to support for many years with our Exmoor Challenges.

We are also very glad to say that in spite of the difficulties our local primary schools have been having – we understand that about two thirds of the Year 6 pupils were currently in school – we were able to donate the excellent Usborne Rotary 'Dictionary 4 Life' (partly dictionary and partly illustrated encyclopaedia for 11 year olds) to every leaver at Bampton, Dulverton, and Bolham schools, nearly 60 pupils in all. It was sad for us to miss the fun and emotional end of term assemblies!

www.exmoor-rotary.org.uk



JOHN FRENCH

**(Plumbing and Home
Improvements)**

**Karlsruhe House, Winsford,
Minehead, TA24 7JE.**

All aspects of plumbing carried
out at affordable rates.

Full Bathroom and Kitchen
installation service.

(Call for a free estimate)

No job too small.
Tel: 01643 851215

SPECIALISED DOG TRAINING

THE DOG ACADEMY

- ACTIVITY TASTER CLASSES
- PUPPY CLASSES
- DOG AGILITY
- POSITIVE GUNDOG TRAINING
- SCENTWORK CLASSES
- TRICK TRAINING

Exmoor Based Venues - Porlock,
Withypool and Nr. Barbrook

GET STARTED NOW AND CALL
07825 884009
www.the-dog-academy.com



Jackie Kelly Fitness

Enjoy Fitness classes, fun for all ages and abilities

Boxercise - Bootcamp - Kettlercise - Fitness Pilates

Monday - 9.30am Body Conditioning,
10.30am Fitness Pilates

5pm Fitness Pilates, 6pm Fitness Pilates,
7pm Boxercise

Tuesday - 10am Legs, Bums & Tums,
6.30pm Kettlercise

Wednesday - 9.30am Fitness Pilates
12pm Body Conditioning

Thursday - 6pm Kettlebell HIIT,
7pm Men's Fitness Pilates

Friday - 6am Bootcamp

9.30am Boxercise, 10.30am Fitness Pilates

Saturday - 8am Circuits/Legs, Bums & Tums

Fitness Pilates, block booking only 6 week course
All other classes pay as you go

Booking is essential

Jackie Kelly Fitness, Parish Rooms, Rosemary Lane,
Dulverton TA22 9DP

Email: jackiekelly416@gmail.com

Tel: 01398 323959 Mob: 07487 711445



FITNESS CLASSES FOR ALL

with Linda London



Mon 7.00pm
Dulverton
Town Hall

Over 50's - Use it or Lose it
(for the very active)

Wed 10.00am
Brushford
Parish Hall

Move, Tone, Chat & Go
(for keeping active)

Wed 11.15am
Brushford
Parish Hall

Easy Exercise for the Older & Wiser
(for the less active) **NEW**

Thurs 6.00pm
Brushford
Parish Hall

Over 50's - Tone, Stretch & Groan
(for keeping active)

Thurs 7.15pm
Brushford
Parish Hall

Step, Tone, Sweat & Stretch
(for the very active)

All classes £4.00

Tel: 01398 323393

Email: linda@lindalondon.plus.com

R & N Fruit & Veg

Fruit and
veg

Fresh local
milk

Logs and
kindling



NEW OWNERS

Open 8 - 5.30 Monday - Saturday

07483 277090

1 Fore Street Dulverton TA22 9EX

NEWS FROM YOUR VILLAGE AGENT

TALKING CAFÉ LIVE

Every weekday at 11 am, a CCS Village, Carers or Community Agent broadcasts LIVE on our Talking Café Live Facebook Page to answer any questions or concerns you have. Questions can also be asked privately via a message to the page. Agents cover a different topic each day – just a few that have been covered so far are Cooking on a Budget, Art Therapy, Hydration and Domestic Abuse. We are delighted to be back with Talking Café Live - you can join us on our Facebook channel address – www.facebook.com/talkingcafesomerset/live.

FOCUS ON DOMESTIC ABUSE AWARENESS

Domestic abuse can happen to anyone, of any age. We are seeing a particular rise in cases of abuse being reported by people over 70 and, with 1 in 4 women and 1 in 6 men suffering some form of abuse in their lifetime, the chances are we all know somebody who is experiencing domestic abuse behind closed doors.

Getting help if you are being abused

- Online at <http://www.somersetsurvivors.org.uk>
- Call the local helpline: 0800 69 49 999
- In an emergency always dial 999, **even if you cannot speak for fear of being overheard, you can get help by pressing 55 when the operator answers**
- Talk to any health professional or your local Village Agent – we can help!
- Somerset pharmacies allow their consulting rooms to be a safe place for people experiencing abuse to get help and advice

TIPS TO AVOID SOCIAL MEDIA SCAMS

Many of us have been online and on social media more since lockdown began, and it's important to stay vigilant of new scams circulating. Up to date information to help you avoid becoming a scam victim is available at the **Get Safe Online** website - www.getsafeonline.org

And should you be a victim of a social media scam:

- Report it to the social media network via the reporting mechanism on the site or app.
- If you have lost money as a result of social media scams or any other fraudulent activity, report it to Action Fraud, the UK's national fraud reporting centre by calling 0300 123 20 40 or by visiting www.actionfraud.police.uk.

Your Village Agents and local support:

CCS want to assure local communities that the Somerset Village Agents continue to be available to support you and as we are set up to work remotely from home we will continue to be on hand to give advice by phone or email.

Across the area Coronavirus Support Groups are available via Facebook - and there are groups of volunteers who are offering help to those in need due to self-isolation or social distancing. The local Dulverton Good Neighbours Group will also be able to offer support. Contact details below:

Dulverton Good Neighbours Group -
07395 171409

Please do contact your local Village Agent if you have any questions or need support. Your West Somerset Village Agent team are here to help.

Your Village Agents:

Jane Lillis
Village Agent West Somerset
Tel: 07958 415270
Email: janel@somersetccc.org.uk

Ellie Bishop
Village Agent West Somerset
Tel: 07985 748910
Email: ellieb@somersetccc.org.uk

Re-home a Phone to Help Tackle Isolation in Somerset

Somerset charity CCS (The Community Council for Somerset) is calling on the generosity of local people to donate their second-hand smartphones, that they no longer need, to help tackle loneliness and isolation in Somerset.

According to the Office of National Statistics, in the first month of lockdown, 5.0% of people said they feel lonely "often or always", that's around 2.6 million people across the UK. For vulnerable people, many of whom have become increasingly isolated during the course of the Covid-19 pandemic, a smartphone can help with access to home shopping, helplines and keeping in touch with friends and family.

Thanks to a very generous donation of smartphones by the Rotary Club of Taunton, CCS Agents have been able to support those who are in urgent need of a means of communication in the Taunton Deane area. Now, CCS would like to extend the scheme county-wide.

Kizzy Marshall, CCS Community Agent for the Mendip area, says:

"Please support us in our quest to combat loneliness within our Somerset communities. If you have a smartphone that is in a used but good condition, lying around in a drawer, please donate it to us.

We will refurbish the phone, including removing any personal data. We'll then provide the new owner with a SIM card and we'll support them to use the phone with video tutorials and by installing apps that will help them to keep in touch with their loved ones."

Since the start of the lockdown, CCS Village, Community and Carers Agents have responded to over 61,000 community support activities. CCS would like to thank all the generous businesses and volunteers who have helped to support vulnerable people across Somerset during the Covid-19 crisis.

Donations have included everything from books to bicycles, ready meals, paint and dog food.

Raj Singh, CCS Deputy Chief Executive, says:

"Please donate a working smartphone to individuals who are struggling with social isolation in the current crisis. We have an uncertain winter ahead. Shorter days and worsening weather conditions will make meeting up outdoors much harder. Technology will be a lifeline to those individuals who are struggling with social isolation, helping them to safely stay connected with their loved ones and their local community. Let us re-home your old working smartphone to support those in our communities who are most in need."

If you have a smartphone you would like to donate, please e-mail Kizzy@somersetccc.org.uk or call 07946 461510.

For anyone in Somerset who is in need of support, CCS Agents are here to help. Get in touch by phone on 01823 331222 or go to the website at www.ccslovesomerset.org to request a call back. The CCS Talking Cafés, live on Facebook every weekday at 11am, are open to all and are a great place to find company, advice and ideas. Those wishing to take part can should visit www.facebook.com/talkingcafesomerset.





Ele Davidson

Painter & Decorator
North Devon Area

07775 600298

eledav1@btinternet.com



painterdecoratorcommissions



CORRIVAL
CAPITAL MANAGEMENT

Are you paying too much for your investment management?

Not sure? We can help

We blend traditional investment management with personal service
and modern technology to deliver real value for money.

Your capital is at risk.



corrivalcm.com



info@corrivalcm.com



01823 426555

Corrival Capital Management is a trading style of P1 Investment Management Ltd. P1 Investment Management Ltd is authorised and regulated by the Financial Conduct Authority under registration number 752005.

DAN PASSMORE

All aspects of garden maintenance

- | | |
|--|---|
|  Grass cutting |  Garden Tidy up |
|  Strimmer work |  Landscaping |
|  Hedge cutting |  Driveways, Patios and Paths |
|  Garden clearance |  Garden gates and Fencing |

For a free quote please call: 01643 851632





**Mary Wilkinson
McTimoney**
Qualified Practitioner
DC AMP

GENTLE, WHOLE BODY TREATMENT
for SPINAL RELATED PROBLEMS

- Back Pain •
- Sciatica •
- Neck & Shoulder •
- Whiplash & Headaches •

Also Qualified McTimoney Animal Therapist
MAA RAMP

Horses, Dogs, Cats, Farm Animals

Higher Putham
Wheddon Cross TA24 7AS
marywilkinson.therapy@gmail.com
01643 841660

S.S. ROOFING SPECIALISTS

Roofing & Leadwork Specialists

*Slating - Tiling - Leadwork - Flat roofing
Cedar shingles - Chimney works
Fascia/soffits Guttering
Residential - Domestic - Conservation
Heritage - Listed*



Independent family run Roofing
& Lead works specialists.
All sizes of projects.

01884 252768
ssroofingspecialist@hotmail.co.uk
www.ssroofingspecialists.co.uk

Chris Flay

Plumbing & Heating Engineer



For Quality Workmanship
and Guaranteed Success

RAYBURN

Boiler Servicing & Maintenance
Rayburn Sales & Service

STANLEY

Gas, Oil and Solid Fuel Installations

Oil Tank Replacement - 24 Hour Service

Domestic or New Housing Enquiries Welcome

AGA

25 YEARS
EXPERIENCE



OIL BURNER CONVERSION

NETHER STOWEY (01278) 732 732

The Arches, South Lane, Nether Stowey, Bridgwater

Anstey Arts

During lockdown in June Anstey Arts organised a bit of fun in the form of a Scarecrow Competition for the local community. There were 21 entries from East Anstey and West Anstey. First prize went to the fabulous crow at Mill View, 2nd prize went to the biker at Post Office House that made a few people jump out of their skins and third prize was the amazing family of scarecrows at Chez Nous. They won hampers of delicious local produce donated by Little Mead Meats, Moorwine and Exmoor Distillery with a few extra goodies added by Anstey Arts. Thank you to everyone who entered the competition, voted and donated prizes.

Karen Piercy Chairman Anstey Arts



Spirebourne Limited

Liquid Waste Disposal and Drainage Co.

FREEPHONE 08000 855185

spirebourne@hotmail.co.uk
www.spirebourne.co.uk

EMERGENCY CALL OUTS

Septic Tank/Cess Pool Emptying - Any Size
Grease Traps
Drain Blockage Clearance
Various Commercial Liquid Waste Disposal
Servicing
CCTV Drainage Surveys
Pump Repairs & Renewals
Installation of Septic Tanks & Sewage Treatment Works
Mantair Units



General Builders, Plasterers & Decorators

 **07792 251977**
andyhayesbuilder@yahoo.com

Call for our

- Project Management Services
- Insurance Works quotes
- Property purchase survey & estimates

All Aspects of.....

Alterations

Renovations, conversions
& new bathrooms

Plastering & Decorating

Internal & external plastering,
rendering, painting, new ceilings,
walls & over skimming

Roofing

Repairs, Renewals or cleaning.
Chimney repairs & rebuilds.
Guttering, cleaned, repaired or
replaced

General Building

including retaining walls,
stonework, repointing, patios,
fencing etc.

Over 30 Years Experience by Qualified Tradesmen


LAURA HARDING
MCTIMONEY CHIROPRACTOR




Offering chiropractic
& remedial massage
appointments in
Dulverton

Appointments available on
Monday, Tuesday, Wednesday,
Friday and Saturdays

Contact Laura:
07980 059807
laurahardingdc@gmail.com

 @LauraHchiropractor

Step-Ahead 
Foot Health Practitioner

LYANNE MOTTERAM

Do you suffer from corns,
callus -hard skin, fungal
nails, athletes foot or
ingrowing toenails?

Foot pain? Not sure what it
is? Or just want to maintain
good foot health?



Appointments available on
Mondays in Dulverton

Contact Lyanne:
07703 627813

Exmoor Wellness Clinic, 36 High Street, Dulverton TA22 9DJ

NATURE LOVERS CHALK UP OVER 2000 SIGHTINGS IN SUPPORT OF EXMOOR CONSERVATION PROJECTS

Over 2000 plant and wildlife observations have been recorded online by members of the public in response to a plea from Exmoor National Park Authority to help rescue vital conservation projects that have been hit by the coronavirus lockdown through volunteers being unable to carry out their usual monitoring. People were asked to help by joining the National Park's WildWatch project on iNaturalist and using the app to log any sightings while out on Exmoor. To date this has resulted in 227 people logging 2024 observations of 818 different species on the platform. A further 417 people, including

professional botanists and National Park conservation volunteers, got involved in helping verify the sightings to get the data up to a standard where it could be used to inform conservation efforts, such as problem invasive species in the National Park.

In a video shared on social media this week to thank contributors, Exmoor National Park Outreach Officer Patrick Watts-Mabbott, said: "We've had an amazing response to our 'Exmoor Wildwatch' and 'Exmoor from Home' projects on iNaturalist. On Friday night we went over 2000 wildlife observations between the two projects and still



Naturally Fleurish
inspired by nature

07715 296 286

**Flowers
for all
Occasions**



OIL BURNER SERVICE MAINTENANCE & REPAIRS

**PAUL JONES
EXFORD**



with over 15 years experience

OFFERING YOU THE BEST QUALITY
OIL BURNER SERVICING AROUND

**COMPETITIVE RATES
BEST QUALITY SERVICE
ALL REPAIRS UNDERTAKEN**

**Call now on 01643 831384
or 07811 600694**

climbing.”

Top sightings include Eye Bright, an ancient herbal remedy with anti-inflammatory properties, and the charmingly named Dog Vomit Slime Mold - single-celled amoeba-like organisms that come together to form fungi-like spring masses.

Patrick added: “I could talk about the amazing orchids, minotaur beetles, moss, grasshoppers, birds, butterflies, reptiles and even butterfly eggs that have been spotted. But as we are on Exmoor we’d better look at the iconic bell heather that is just starting to bloom. By mid-August places like Brendon Common, Dunkery Beacon and Winsford Hill, will be purple and buzzing with bees.

“So if you’re planning a visit to Exmoor this year, download the iNaturalist app from the usual places and search the

projects for ‘Exmoor Wildwatch’. Then get recording. There’s no need to know everything you find, just get some good photos, ideally from different angles, and upload them. Our volunteers will help you identify them.”

Free wildlife spotter guides are from National Park Centres in Lynmouth, Dunster and Dulverton or online at www.exmoor-nationalpark.gov.uk/Whats-Special/exmoor-wildwatch.



Photo © Dan James



LAND & WATER MANAGEMENT



- Water Treatment/Filtration
- Borehole & Spring Water
 - Pumping Systems
- Water testing/sampling



- Excavations & Groundworks
- Robocut for topping brambles/bracken etc on steep ground & Rotavator attachment
- Site prep and clearance

CALL NOW FOR A FREE QUOTATION
EXMOOR AREA

01643 851548 / 07817713693
www.traxgroundworks.co.uk



Exmoor garage LTD

**Car, Commercial, Agricultural, Plant,
Vehicle repairs**

kevin.norman4@btinternet.com

Unit 8 Global Park Bampton

Tiverton Devon Ex16 9NG

01398 332446 / 07753261574



Standard sizing of overlap panels in stock
Bespoke gates
Bespoke Sheds/Timber Buildings
Dumpy bags of seasonal logs £45 per bag
Fire wood from £20 a bag



01823 400244 sales@milvertonosawmills.co.uk Station Road, Milverton, Somerset, TA4 1LD



Tarr Farm Inn

Tarr Steps, Dulverton, Exmoor, TA22 9PY

Telephone: +44 (0)1643 851507

Email: enquiries@tarrfarm.co.uk



We are delighted to welcome you again in-line with current Government Covid-19 guidance. Please check our website or contact us for up-to-date information on dining and staying with us and to see our latest events.



tarrfarm.co.uk



For all your scaffolding needs No job too big or small

From chimney stacks to temporary roofing

07562 775088

exmoorscaffolding@gmail.com

Roger L Hammond Architectural Design Services

Free initial consultation
Feasibility studies and design advice
Measured survey, detail drawings
Planning and building regulations applications
Extensions, barn conversions and new build
Listed buildings and conservation work
Specifications prepared
Tendering, procurement and supervision
Residential and commercial
35 years experience

Reasonable rates

Tawny, 8 Great Meadow, Dulverton,
Somerset, TA22 9DT
Tel/Fax: 01398 324644, mobile 0777 906 0969
e mail; rl.hammond@btinternet.com
website; www.rlhammond-architecturaldesign.co.uk



Dan Stone Accountancy

CHARTERED ACCOUNTANT

- Sole Traders, Partnerships and Limited Companies
- Accounts and Tax Returns
- Business Start Ups
- Making Tax Digital Support
- Charities and Not For Profit

NOW TAKING ON NEW CLIENTS

Contact Dan for a free initial consultation

Telephone: 01943 822305 Mobile: 07970 304179

Email: dstoneaccountancy@btinternet.com

www.danstoneaccountancy.co.uk

Exmoor's Local
Accountancy Service



ICAEW
CHARTERED
ACCOUNTANT



exmoor trees

Native trees and shrubs for
hedge and woodland
Call us now: 07971 580057
www.exmoortrees.co.uk

TIVERTON & TAUNTON FLOORING LTD

39 Bampton Street & William Street Warehouse
Tiverton, Devon, EX16 6AH

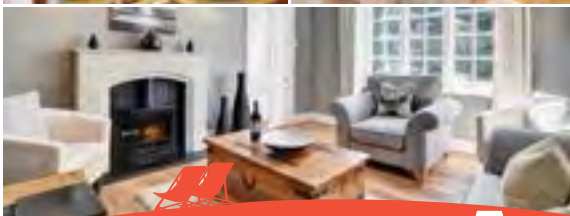
HAL WHITE

Mobile: 07770 637 368

01884 257 144

*Trust your local
holiday property experts*

- Competitive commission rates
- Local, friendly, expert advice and support
- Comprehensive marketing
- Fully managed services to suit your needs
- Mobile-optimised website
- Over 97% of our owners would recommend us - find out why...



Request a FREE homeowner pack online today!

01271 813777 marsdens.co.uk




**Edworthys
Carpet &
Window Cleaning**

NEW! ■ **Patio Driveway and
Decking Cleaning**

■ Gutters ■ Facias
■ Roof Cleaning ■ Upholstery

Please contact Tom for a free quotation.
**Friendly, reliable and very
professional**

01398 323696 - 07984 057527




**CHIMNEY
SWEEP**

NACS REGISTERED
CLEAN AND EFFICIENT
FULLY INSURED/ CERT ISSUED
COWLS AND BIRDGUARDS FITTED
WOODBURNERS REFURBISHED
POWER SWEEPING
CCTV CAMERA SURVEYING

PHONE IAN
TEL : 01984 640893
MOBILE : 07502099323

Dulverton Farmers Market



10.00 - 14.30
Last Saturday of
the month
April - September



Lion Car Park
Dulverton
TA22 9HB



www.dulvertonfarmersmarket.co.uk

Tel: 01398 923471



Haddeo Firewood

Kiln dried oak firewood	£85
Seasoned oak firewood	£62
per large dumpy bag (0.72m ³)	

Bickham, Timberscombe, TA24 7UA

Delivery can be arranged.

BERNARD DRU 07920 516225

email: bernard.dru@oakfloor.co.uk

AB Plumbing

Your local plumber

*All work considered
No job too small
24 hour Emergencies
Credit and Debit cards accepted*



07779 348724

*Landline 01398 351436
andyboakford@icloud.com*

Bampton Framing

Bespoke
Picture Frames
Locally Made

Colin Williams
07954 846452

www.bamptonframing.co.uk

colintheframer@gmail.com

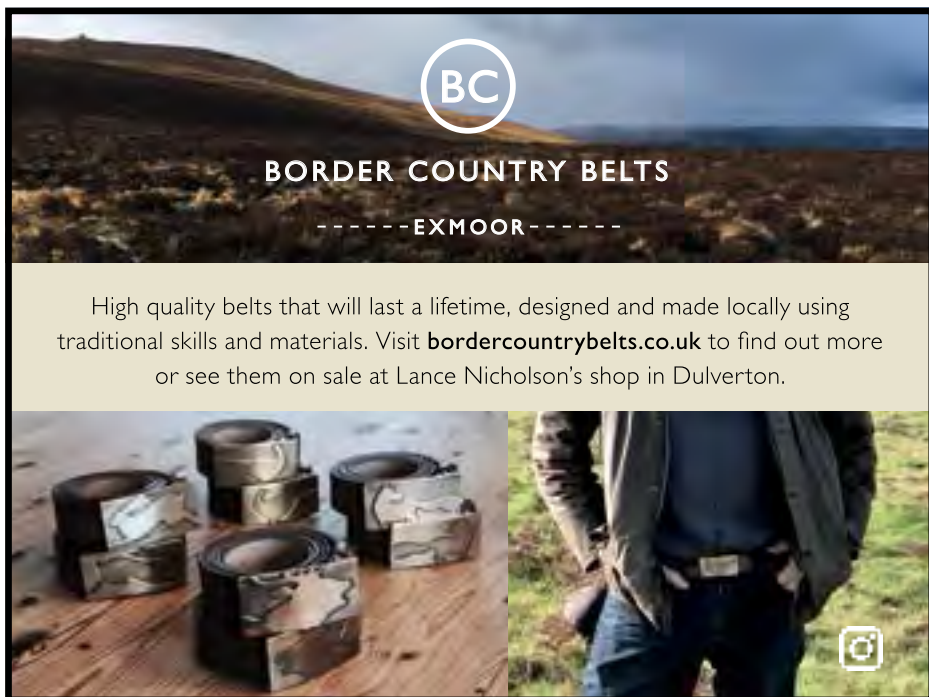
UPDATE ON SOMERSET COMMUNITY FOUNDATION'S CORONAVIRUS APPEAL

As a trustee of Somerset Community Foundation, I pay tribute to our staff who have worked so hard to raise more than £1 million in the last few months. The Foundation, a charity itself, was able to rapidly raise and distribute funds within a matter of days thanks to the support of individuals, charitable trusts and businesses, and funding from the National Emergencies Trust. Up to the end of July, we have distributed more than £500,000 in 180 grants in just 14 weeks.

We know from groups we have funded that our new streamlined processes and rapid decision-making has made a tremendous difference. I really don't think any other organisation could have mobilised so swiftly, in the way we have, which is testament to the skill and hard work of our staff, all working from home

too. Funds from the Somerset Coronavirus Appeal have already made a huge impact, helping local charitable groups and volunteers respond to urgent needs in light of the pandemic. Donations have funded a wide range of front-line projects such as food banks, help for the elderly, support for people with disabilities and projects supporting disadvantaged young people. Front line organisations across the area have stepped up so magnificently.

Three local projects received grants - Dulverton and Brushford Pastimes Club based at Hanover Court received £2,000 to enable them to supply hot meals to vulnerable people. Dulverton Good Neighbours received £6,000 for food provision and support for vulnerable people via their Food




BC

BORDER COUNTRY BELTS

----- EXMOOR -----

High quality belts that will last a lifetime, designed and made locally using traditional skills and materials. Visit bordercountrybelts.co.uk to find out more or see them on sale at Lance Nicholson's shop in Dulverton.



Bank, Wiveliscombe Area Partnership received £3,500 for work to support vulnerable people.

Details of all grants provided can be found here -<https://www.somersetcf.org.uk/coronavirusgrants>

Somerset Community Foundation (SCF) has now launched the next phase of their Somerset Coronavirus Appeal, in a bid to raise £1.5m for our communities across the county.

Local groups and charities are now in an incredibly difficult position. At the same time as the usual fundraising events have been cancelled, the demand for their services has grown substantially. We know there is a risk many of them will not survive without additional funding. We are now building a picture of the likely longer term impacts for our communities and the voluntary sector in Somerset and finalising how we see our role in the coming months. Undoubtedly, there are still some tough

times ahead. Coronavirus has magnified the deepening inequalities in our society, and as we move into the next phase, our local charities, community organisations and social enterprises will be needed more than ever. We hope to help our local groups weather the financial storm they are facing now and in the future. The impact of coronavirus on our communities will continue. Life will be even tougher for those who are already disadvantaged.

To donate to the Somerset Coronavirus Appeal visit www.somersetcf.org.uk/appeal or, if that isn't possible, call 01749 344949.

Community Foundations help passionate people to change the world on their doorstep. In partnership with local donors, they provide funding and support to help reduce disadvantage and build strong communities.

Jan Ross



ALL-NEW CORSA

at Westcars of Tiverton

Including the latest coolest tech, and zippy new engines with and an all-electric option.

Come and meet our most fun Corsa ever at Westcars of Tiverton.

Westcars of Tiverton 11 Blundell's Road, Tiverton EX16 4DB
Telephone: 01884 257143 or 01884 230807
or search **Westcars Tiverton** or **f Westcars Approved**



VAUXHALL

Amicus Law

SOLICITORS

BUYING
& SELLING
PROPERTY



SHARED
OWNERSHIP



CRIMINAL LAW
& MOTORING
OFFENCES



WILLS
PROBATE
& TRUSTS



FAMILY LAW
& DIVORCE



DISPUTE
RESOLUTIONS



EMPLOYMENT
LAW



AGRICULTURAL
LAW



9 PARKHOUSE ROAD | MINEHEAD | SOMERSET | TA24 8AB

BRIDGWATER | WELLINGTON | MINEHEAD | YEOVIL | MARTOCK | EXETER

AMICUSLAW.CO.UK | 01643 701 888



Belinda Hopkins

01398 324 053

sew_n_sew@hotmail.co.uk

www.sew-n-sew.co.uk

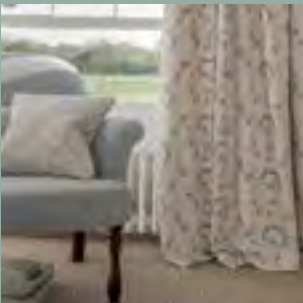
Quality bespoke made to measure curtains,
roman blinds and cushions.

Curtains adapted and altered to fit

Curtain poles, tracks, venetian & roller blinds

Range of fabrics available including iLiv and

Clarke & Clarke





EXMOOR CREATIVE

INSPIRED DIGITAL COMMUNICATION

WEB DESIGN

MARKETING

PR

HOSTING

EMAIL

PHOTOGRAPHY

BRANDING

COPYWRITING

STRATEGY

PLANNING

w: exmoorcreative.co.uk e: info@exmoorcreative.co.uk
t: 07725815802 / 07725810907

Exmoor Creative LLP Registered in England & Wales. Reg OC430498
Registered office: Linden Lea, Ellersdown Lane, Brushford, Somerset, TA22 9BH

Exmoor Landscaping



Local and reliable

Clearance and ground works

Stonewalling and steps

Patios and ponds

Fencing and treework

Turf supplied and laid



Tel: 01984 640530
or Mobile: 07974 141790
or visit www.exmoorlandscaping.co.uk



Nikki Routledge
Cert CBS
Human Bowen
Practitioner

Gentle and light therapy suitable for musculoskeletal pain, asthma and allergies, migraines, MS and other chronic conditions in adults, infant colic and bed-wetting or growing pains in children.

Tel: 07890 968 115
www.mimi.me.uk

Kit Di Marte

BSc(Hons) MSc EEBW

BHS Accredited Professional Coach
 Stage 3 Coach in Complete
 Horsemanship
 Stage 4 Senior Rider and Yard
 Manager

Available for freelance coaching
 and schooling.

Also fully qualified
 Equine Body
 Worker and

McDermoney therapist



07758 236 240

kit_dimarte@yahoo.co.uk



JEFF PEGRUM

35 years' experience in
 all domestic, equestrian
 and agricultural
 landscaping and design.

- Groundworks, drainage and concreting
- Patios and garden projects
- All types of fencing
- Sewage treatment plants – to new regulations
- Internal and external stabling
- Landscaping projects
- Sand schools

07976 951860

Stookham Farm, Dulverton
 pegrum.jeff@gmail.com

The Exmoor Society

PINNACLE AWARD

Now increased with extended age limit and application deadline!

An increased award of **£5,000** is available to develop an idea, project or business proposal by individuals or groups aged between 18 and 35 who live, work or study in the Greater Exmoor area.

The Award was set up in 2011 by The Exmoor Society for young entrepreneurs who wish to live and work on Exmoor. As a conservation body, we fully recognise the importance of providing opportunities for young people to remain on the moor when they enter the world of work. We want to show that beautiful landscapes and livelihoods can go together to keep the very essence of Exmoor alive.

Applications are being taken now and the extended deadline is **Monday, November 2nd 2020.**

Full details are available on the Exmoor Society website under **What We Do/Competitions and Awards** or from the Society office:

info@exmoorsociety.com 01398 323335 www.exmoorsociety.com



TREE SERVICES LIMITED



QUALIFIED
WORKFORCE

BRENDON HILL TREE SERVICES

01823 461789 • 07971 531333

www.brendonhill.co.uk
info@brendonhill.co.uk

FREE WRITTEN QUOTATIONS



TREE SERVICES LIMITED



QUALIFIED
WORKFORCE

All Aspects of Arboriculture & Tree Surgery

**Agricultural and Domestic Fencing
Hedge Laying, Coppicing and Felling**

Kiln Dried Logs and Woodchip for Biomass Boilers BSL REGISTERED

FULLY INSURED - NC ARB & NPTC QUALIFIED



Therapies with Pippa Canney DipCNM MAMP ITEC MCThA
Nutritional Therapy and Naturopathy – health and wellbeing from the inside out. Digestive issues, cancer support, eczema, depression, high cholesterol, insomnia, arthritis, infertility, diabetes, obesity, recurrent infections are a few of the things that can be helped.

Bowen Therapy

A gentle form of hands on therapy suitable for all ages. Releases blockages to rebalance and regain function.

Reflexology

Specialist foot massage to help the body regain function. Great for stress/reproductive/digestive issues.

Reiki Healing

A settling and reassuring therapy helpful for times of distress or imbalance. Emotionally supportive. Gentle hands on healing.



Wellbeing and Skin Care

The Old Blacksmiths, Bridge Street
 Dulverton TA22 9HJ

01398 324155

9 Orchard Road

Minehead TA24 5JY
www.pippacanney.co.uk
pippacanney@gmail.com

07779 748315



FRIENDSHIP & SONS

Funeral Directors

For the personal touches that matter.

Dedicated to providing dignified funeral services at affordable costs without compromising on quality

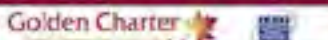
Inclusive Funeral - £1995 plus disbursements

- Oak veneered coffin provided
- Provide hearse and bearers
- Limousine to transport family
- 50 service sheets • 3ft coffin spray
- Newspaper announcement in the local press



For professional advice and guidance please contact us 24 hours a day

Dulverton 01398 324590



Office and Chapel of Rest, Unit 7 Barle Enterprise Centre, Dulverton TA22 9BF | www.friendshipandsons.co.uk | nick@friendshipandsons.co.uk



Three Atop Woodland Services

Tree Care

Reductions - Crown Lifts - Removals

Woodland Management

Felling - Coppicing - Planting

Portable Chainsaw Milling

Posts - Repurposing - Planks

Nick Hosegood

Phone: 01984 641 330

Mob: 07870 917 532

threeatop@outlook.com

www.threeatop.co.uk



Rupert White INTERIORS



Full Design Service

•
Project
management

•
Comprehensive
range of fabrics

•
Curtain making

•
Upholstery

•
Lighting

•
Accessories

•
Sourcing

•
Floor coverings

Rupert White Interiors

The Stables, Bampton, Devon, EX16 9LA

Tel : 07789 377 412

enquiries@rupertwhiteinteriors.co.uk

Please ring to make an appointment



EXMOOR FOREST INN

Ideally located in the middle of Exmoor

A warm welcome • Family & dog friendly

Delicious freshly prepared meals and snacks

Local and guest cask ales

Beverages and cream teas • Party bookings invited

Bed & Breakfast accommodation

2 bedroom self catering cottage

Our large entrance hall is an ideal place to leave walking gear,
muddy boots and coats. Towels provided for damp dogs.



Simonsbath, Minehead, Somerset, TA24 7SH

telephone: 01643 831341 • info@exmoorforestinn.co.uk



@exmoorforest

www.exmoorforestinn.co.uk

Find us on 

How the Somerset Young Farmers are surviving the pandemic

Faced with the Covid-19 pandemic the Federation of Somerset Young Farmers Clubs has had to adapt very quickly. 2020 has quickly become the year of the 'new normal' with phrases like 'lockdown', 'social distancing' and 'stay alert' becoming part of our daily vocabulary. With almost eight hundred members in over twenty-three clubs throughout Somerset, the organisation has moved quickly to ensure that the fun is still in young farmers, whilst focussing on the mental wellbeing of its members. Mental Health is a high priority for the organisation. Funding to provide Mental Health First Aid training for members has been granted by the Somerset Community Foundation. Somerset is one of the first Federations in the country to have trained mental health

first aiders amongst its membership. The two-day certified course is being delivered by Becky Wright of New Leaf who said "I'm so excited to be asked to deliver the Mental Health First Aid and mental Health Awareness Training for the Somerset Federation of Young Farmers Clubs. Research revealed that four out of five young farmers (under 40) believe that mental health is the biggest hidden problem facing farmers today. I am delighted that this group are taking the issues seriously and have a huge willingness to support others within the club. This work is a great extension of the release of the Mental Health in Agriculture Z card released in May 2020 to coincide with Mental Health Awareness Week."

As well as this, Bridgwater Agricultural

**Roy
Hart
Computers**

01884 257288

chris@rhcomp.co.uk

 *computing without tears!*

We can offer the **right** solution for the
first time & experienced user

Is your computer running slowly?

Contact **Chris** for a MOT & service to keep it in tip top condition

New Systems ● Upgrades ● Virus & Problem Solving

Wifi, Broadband and Smart TV connections

FAMILY FIRM SUPPORTING COMPUTERS IN YOUR HOME SINCE 1981

Society has provided further funding for younger members to give them a better general understanding of mental health, something that has become even more vital during this current health crisis. Feelings of loss and isolation are quite common and as a rural organisation, this funding is vital to ensure that a team of members are educated in mental health throughout the county.

As meetings have been cancelled for the time being, online competitions have become part and parcel of the 'new normal' for the Young Farmers during lockdown and beyond. The Young Farmers have been embracing new technologies such as Zoom to keep in touch. Online challenges like joke telling competitions, stockjudging and pet selfies have added to the fun and

the sense of belonging for the members. Lots of entries have come in and the aim is to have something for everyone. The success of the competitions is largely down to sponsorship from the likes of Mole Valley Farmers, Wyke Farms, Greenslade Taylor Hunt and Cooper & Tanner for providing prizes for our winning entrants.

County Chairman Tom Pope said, "It has been a challenging but rewarding year so far. Due to Covid-19, our major events and fundraisers have been cancelled which has been a real shame and has put a big hole in our budget. I have been overwhelmed by how well the clubs have adapted and embraced the change and there have been many whacky ideas of things to do over Zoom, from quizzes to treasure hunts! I have enjoyed seeing





Winner of the Pet Selfie competition
 members get involved in the online county competitions and I hope as the lockdown eases we will be able to get back to doing some of our favourite competitions soon."

As we emerge from the pandemic the hope is to get back to the activities that Young Farmers members know and love,

but until then they are making the most of the facilities available to them and most importantly staying safe!

Somerset Federation of Young Farmers Clubs is a rural youth organisation for all young people with an interest in the countryside and from the ages 10-26 years old.

Registered Charity number: 273051

The Farmers Den Exford

All enquiries
 Tel: 01643 831151
 carolecwoods@aol.com
 www.pickedstones.co.uk

- Army Surplus and Equipment
- Waterproof Workwear
- Hunting Apparel
- Secondhand riding clothing and tack (Updated regularly online)



"Stockist of Stormchase Face masks. Double fabric (so a filter can be added if you wish) 80% cotton 20% polyester. Totally washable. 4 designs to choose from. £5.50 each.



We will return all enquiries a.s.a.p.
 MAIL ORDER :
 HOME DELIVERY

All major credit and debit cards accepted



Remember your precious pet with one of my handcrafted pet markers

TREASURED PETS



www.beckfordsartworks.co.uk
 laurencebeckford@hotmail.com



Laurence Beckford
 Dulverton
 01398 323746
 0772 4452 961

FOREVER ANIMAL CARE

- How to help your horses and dogs to be healthy naturally
- Build your animal care business with bespoke coaching
- Enjoy quality aloe vera healthcare for your horse, dog and you
- Free training and careers advice on holistic horse and dog care



www.taranet.co.uk info@taranet.co.uk 07340 672920 FB: @HolisticAnimal

JANE PENFOLD EQUESTRIAN SERVICES

Equine Bodywork –
The Masterson Method®, Myofascial Release,
Laser Therapy, Acupressure and more!

Saddle Fitting – checking, reflocking,
help sourcing secondhand saddles,
numnahs, new girth straps etc.

Riding Tuition – all ages 10+.
Classically trained, BHS Accredited Coach
and former BD listed Judge.

The
British
Horse
Society



*Fully qualified and insured –
call me for a chat to see
if I can help you!*



www.flexiblehorse.co.uk

07711 130371

Jane@flexiblehorse.co.uk

Larchwood Cattery

East Anstey EX16 9JL



Purpose built

Individually heated chalets

Spacious outdoor runs

Tel: 01398 341100/07598813621

Email: Info@larchwoodcattery.co.uk

www.larchwoodcattery.co.uk



All Breeds are welcome for:

Clipping, Stripping, Scissoring, Bathing & Drying

Bath and Brush outs (B & B's) - To keep your dog squeaky clean and matt free inbetween grooms

All Grooms include bath, trim, styling, nail clipping and ear cleaning if needed.

Puppies are welcome for puppy baths and grooming to get them prepared for their grooming life.

Gentle, Caring & Patient

Please call Denise on

01398 324370 or 07584085668

9am - 5pm Monday to Friday

Brushford, Dulverton, Somerset

The Winsford Dog School Winsford Village Hall

Training for that perfect companion!

Classes on Monday evenings:

RESERVE YOUR PLACE NOW

Puppies - 5:30pm

Improver - 6:30pm

Advanced Adults- 2:30pm

Courses run for 10 weeks.

All welcome from pups to geriatrics.

To book a place please contact

Suzy on 01643 851281

www.suzyandcanines.co.uk

dilly7a@yahoo.com

1:1 is always available for behavioural issues or training to get ahead!



07792233649

david@trailerservicesparlock.com



A Dog's Day Out – A Line of Duty

Incredible news. Honey has been researching her ancestry for months and it turns out she is half Spanish speaking and half Welsh! She is, of course, really pleased with herself. 'I feel reassured about myself and complete now' she said. I suppose I'm partly to blame as I insisted that in the beginning we were wolves and that humans selected the smallest wolves, like me, to act as guards in their settlements to protect their homes.

Perhaps now she's fulfilled we can get on with our lives again as there's something in our shed. Next door's pesky cat has been trying to get in on the act too. (Why is it that cats think they are better at catching a rodent than a classically bred terrier such as myself!) But here's the thing. Honey says as she doesn't contain any terrier blood it's up to me to sniff out the rodent in our shed as she's off to locate a book on teach yourself Welsh.

And there's something else bothering me. Why is it taking so long to get the shopping done? We sat in the car yesterday for nearly 20 minutes watching her stood outside the Co-op doing absolutely nothing. "She says it's the new norm Buddy. She has to stand in a line." But doesn't she realise that that's 20 minutes knocked off our exercise period! "You know she has promised not to get in a line with more than 6 in it already." Look at her now! That's more than 6. More like a hundred! "Because people have joined in a queue behind her. Look, she's nearly at the front now. There's no need for you to be huffing about it. A queue is the epitome of Britishness, all

that quiet politeness and respect for unstated order. Did you know that The Queen prefers little Welsh dogs? Her favourite was Susan. I think I shall call myself Honey Susan Brown. How does that sound to you"? H'mmmm

Buddy Brown (pure Jack Russell) a roving reporter

Honey Susan Brown (Chorgi)



We welcome your community information. You can be added to our contributors email list asking for copy (we send a reminder email prior to deadlines). Just email us to be added.

If you see something which needs changing in the directory at the back of our magazine please do let us know. Email exmoornews@gmail.com.



07740 865600

**THE COMPLETE HORSE RUG
WASHING AND REPAIR SERVICE**

- 7 day turnaround (or less)
- Free collection and delivery for 5 or more rugs
- Quantity discounts
- Repairs undertaken at £10ph
- Nikwax products used

Rug Wash ... £11.00 Reproof ... £7.00

Fleeces and Fly Rugs ... £9.00

www.prismequinelaundry.co.uk



Genealogy and family history

Advice on the care and conservation
of historical and family papers

Dr.Helen.Blackman@gmail.com
<https://drhelenblackman.wixsite.com/archives>
Tel. 07443 655803

STEVE BISHOP **PEST CONTROL** **SERVICES**

*Covering West Somerset,
North and Mid Devon*

*Control of rural,
residential & commercial pest species*

*Qualified Pest Control
Technician*

01643 851267

07870 815400

For Fast, Friendly, Reliable Service

**Rats, Mice, Moles,
Crawling and Flying Insects
Inc. Wasps, Fleas, Bedbugs,
Cockroaches, Flies,
Bird control and proofing
Electric Fly Killing Units Supplied**



Exmoor BookBinding

01643 841116

sarah@the-burns.com

**Repairs & Restoration to
all your favourite books.**



Albums, Folios
Scrapbooks &
Journals
made to order.

Lance Nicholson Country Pursuits



9 High Street, Dulverton
01398 323409

Shotguns, rifles,
ammunition, clays etc.
All your game fishing needs
plus details of the
Dulverton Angling Association.
Large range of Barbour clothing.

www.lance-nicholson.co.uk

Life Mobility Showroom



**VAT
EXEMPT
SAVE
20%***



Vehicle Adaptions For Drivers and Passengers



Vehicle Hire

Wheelchair Accessible Vehicles From £28.57 per day†

*Qualifying disabled customers/vehicles could save 20% (VAT). † Vehicle Hire is self insure only; Terms and Conditions apply; Please contact for full details; £28.57 if VAT exempt (£38.28 if not), based on 7 day hire.



Adaptacar

MOBILITY SPECIALISTS

Pathfields Business Park,
South Molton, EX36 3LH

www.adaptacar.uk

Tel: 01769 52785



01984 623404 | wci.co.uk
enquiries@wci.co.uk

Service, maintenance and repair of all types of sewage treatment plant and pumping equipment.

All manufacturers. Domestic and commercial systems.

Emergency Call Outs. Biennial diarised visits. Annual Service Contracts with a Service Level Agreement.

Call or email us today to arrange a service visit or discuss your options

British Water Accredited Service Engineers.

- ✓ Responsive
- ✓ Professional
- ✓ Fully Insured
- ✓ Family Run

SIMMONS
PLUMBING & HEATING

- ▶ Oil fired boiler servicing and repairs.
- ▶ Rayburns, Agas, Stanleys & fires all covered.
- ▶ Oil tank installations.
- ▶ All types of plumbing & heating work undertaken.

☎ 01769 550504
☎ 07951 436042

PAUL PRIEST

LIME PLASTERING & STONE WORK



Lime Plastering and Stonework Specialist

- Application of Traditional Plasters and Washes
- Restoration and Conservation of old properties
- Damp Management through the use of breathable materials
- All aspects of Plastering and Stonework - both exterior and interior

Mob: 07870 454003

www.paullimeplastering.co.uk

NO VAT CHARGE ON LABOUR

"Trust in a specialist who is proud to put his own name to his work"



Bobcat Hire

Skid Steer Loaders 44", 48" & 66" wide

Mini Diggers ranging from 1.5 ton to 6 ton

Available with Hydraulic Auger, Breakers,
Post Banger, Grab and Tree Shear Grab

Self Drive/Competitive Rates

Tel: 01598 740406

Mob: 07970 914070

Richard Smith – Agricultural Engineer
North Molton, Devon



Diamond Shine

Mobile Vehicle Valeting

Professional
Affordable Reliable
Your local vehicle
cleaning company

07896 154 176

phil46yam@hotmail.com



PHOENIX CHIMNEYS

Need your Chimney swept or thinking of having a Log Burner fitted?

It could be damaged or blocked with birds nests. If so it could be a fire risk and may lead to deadly Carbon Monoxide fumes leaking into your home. Now is the time to get it checked.

We cover North Devon, West Somerset, Exmoor, North Cornwall. We have full Public Liability Insurance and certificates are issued to confirm work.

The services we provide are:

- Full sweeping service to all chimneys including Rayburns, Agas and Stairneys
- H.E.T.A.S. registered installer of Wood and Multifuel burners.
- Services and repairs
- Gas and smoke detectors supplied and fitted
- Chimney stack repairs
- Supply and Fit all types of Cows, Bird guards and chimney pots
- Landlord & holiday home owner solid fuel appliance safety checks issued.



Call to arrange a no obligation site visit

www.phoenix-chimneys.co.uk

01271 855543 / 07956 866593

Making time for you to enjoy life



Providing support and housing for older people at Abbeyfield House, Dulverton

Please call **01398 324136** for more information

Abbeyfield

Dulverton Society
Making time for older people

Registered National Office: The Abbeyfield Society, St Peters House, 2 Bricket Road, St Albans, Hertfordshire AL1 3JW

EXE PEST

All types of pest control services & supplies

01398 331885

home

15 West Street

07971 983093

Bob

Bampton

07812 037716

Graham

Devon Ex16 9NJ



**Rats, Mice, Fleas, Ants, Wasps,
Bees, Cockroaches, Flies, Moths.**

info@exepest.com



Joshua Waygood Historic Building Conservation

Providing traditional lime restoration and repairs to historic buildings throughout Somerset & Devon

Lime plastering, lime rendering & lime pointing, lime washing, traditional stonework, stone repairs cob wall repairs

07795 967292

josh_waygood@hotmail.co.uk

G.S. GARDEN MACHINERY

Sales and Repairs of all Garden Equipment

Agents for:

Makita



Castel and
Lawn King
Ride Ons and
Mowers



Tanaka Brush
Cutters and
Hedge Cutters



**New and Secondhand
Friendly Service**

Units 1 & 2A, Carnarvon Arms Garage,
Brushford, Dulverton, Somerset TA22 9AG.

Tel: 01398 32 44 55 Email: gsgardenmachinery@gmail.com



MALCOLM HARDING CONTRACTING

*Fencing and Hedge laying, Shearing
Chainsaw work, Hedge Trimming,*

Domestic enquiries also welcome

Contact Malcolm: 07787 427507

The royal oak

EXMOOR



*Traditional Bar Food and Restaurant Dining
with 4 Star Country Inn Accommodation*



Bar and Restaurant

The Royal Oak was originally a 12th Century farmhouse and has a fascinating history. Today it's a traditional Country Inn with 4 star accommodation.

Offering the highest quality bar/restaurant dining 7 days a week and superbly appointed bedrooms.

Open from 10am every day, all through the year.

Royal Oak Exmoor - Winsford

Exmoor National Park - Somerset - TA24 7JE

01643 851455 - www.royaloakexmoor.co.uk



N. H. Hopkins

General Builder

All Building Work Undertaken

Tel: 01398 323687

Mob: 07790 711 125



RENOVATION
RESTORATION
PRESERVATION

**Maintaining
the Building
Heritage
of Exmoor**

All types
of work
undertaken



EXMOOR BUILDERS

T 01398 324 669 M 07831 252 276

e info@exmoorbuilders.co.uk w www.exmoorbuilders.co.uk



ARCHITECTS AND HISTORIC BUILDING CONSULTANTS

We specialise in all aspects of work to Grade I, II* and II listed buildings as well as some unlisted in historic settings.

- Private houses
- Churches
- Farm buildings
- Museums and monuments
- Stately homes

Two partners accredited in building conservation.

We also design contemporary, new build projects using traditional materials.

Bespoke packages or one-off advice to suit your needs.

Call or email for a no-obligation visit.

JANE JONES-WARNER
ASSOCIATES

Based in Withiel Florey and Chichester
tel 07584 038222
mail@janejoneswarner.com
www.janejoneswarner.com

HOBBS Electrical Contractors Ltd



* Commercial * Domestic * Industrial *

Electrical Installation
Rewires, new builds & renovations
Maintenance & Repairs
Inspection & Testing, Portable Appliance Testing

Dulverton: 01398 323518 Tiverton: 01884 253563

Unit 4, Exelridge industrial Estate, Exelridge, Dulverton, Somerset, TA22 9BL

The Bunting's out in Dunster village!

OVER 2 MILES OF HANDMADE FLAGS NOW ADORN DUNSTER VILLAGE

After months of hard work behind the closed doors of the homes of Dunster, more than two miles of beautiful, handmade bunting is gently fluttering in the wind up and down the village and Marsh. The brainchild of the team at the Dunster Tourism Forum (DTF), it really has brought the community together during the difficult days of lockdown and now it is making our visitors smile.

With 15 volunteers cutting, sewing and binding there was enough bunting to stretch all the way from the Visitor Centre by the A39 out to the Dunster Surgery. The bunting here was made by our youngest volunteer, Sky Golding, aged just 14. Day trippers will be delighted to see that the iconic ancient Yarn Market has not missed out. This ancient monument, which took a hit from a cannon ball in the Civil War, is now sporting a woollen pom pom rainbow and 200m of bunting!

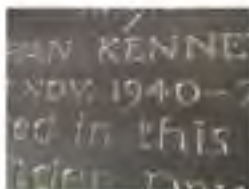
Susan Ashton who masterminded the team of volunteers and is responsible for many meters of bunting herself says: *"We had an incredible response to the idea for the Bunting Bonanza. That's why, during lockdown, if you walked around the deserted streets of Dunster, you might have heard the gentle hum of a sewing machine. We want to thank everyone who contributed to this amazing community effort – the crafters who made the bunting, those who contributed funds and fabrics, the team who erected the display. And through the power of social media and the TV, we had bunting sent to us from ladies in Cornwall and donations from as far afield as the USA. When we see the buzz the bunting has created and hear the positive comments from visitors to our beautiful village we all have a huge sense of pride. It's amazing what you can achieve when you come together."*

The aim is to maintain the bunting until October half-term, then remove, wash and repair it – ready for re-hanging at Easter 2021.

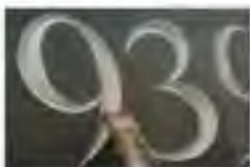
Photos © Nina Dodd



LAURENCE J. W. BECKFORD MONUMENTAL MASON & CARVER



SLATE MEMORIAL



TRADITIONAL HAND
CUT LETTERING



MEMORIAL BENCH

HEADSTONES and MEMORIALS

Individually designed and hand carved in Dulverton

Refurbishment of existing headstones and memorials
including re-fixing, painting and gilding

0772 4452 961

www.beckfordsartworks.co.uk laurence.beckford@sky.com

Full member of the Master Carvers Association (M.C.A)

**landscap
services**

www.tjlandscape.co.uk

Garden Design & Landscape Construction

• Fencing • Patios • Paths • Ponds
• Decking • Stone Walls • Turfing

Tim Jackson
31 Lower Meadow Road,
Minehead, Somerset,
TA24 8AW

mob. 07748644376
email tim@tjlandscape.co.uk

TONY BROOKE CARPETS & FLOORING

CARPET ■ VINYL ■ FLOTEX
NATURALS ■ SAFETY FLOORING
LVT ■ RUGS ■ RUNNERS ■
MATS & MORE!

- Free estimating and planning
- Expert advice and fitting
- Over 25 years experience
- Home-choose service
- Re-stretches, re-adaptions and repairs
- Great deals on roll stock and remnants
- Already bought a carpet? We'll fit it!
- **Price Promise** - we won't be beaten



Tel: 01984 632206

Visit our showroom

Units 2 - 4, Roughmoor Industrial Estate,
Williton, Somerset TA4 4RF

www.tonybrookecarpetsandflooring.co.uk

NIMBLE FINGERS



Trading since 1994

23 Fore Street, Dulverton Tel: 01398 323688

Tapestry Kits & Loose Canvases - Elizabeth Bradley Kits

Cross Stitch Kits & Charts - Free Style Embroidery Kits

Anchor and DMC, Needle Craft Yarns, Knitting Yarns

Selection of dress fabrics including Liberty cotton prints

Accessories for most embroidery needs

Wide range of Haberdashery for Home Sewing and Clothes Repair

Ribbons, Tapes, Elastics, Bindings, etc - all sold by the metre

Buttons - sold singly

Silk Flowers, Floral Art Accessories

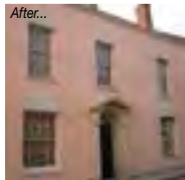
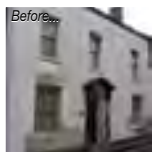
OPEN - Monday to Saturday 12 noon - 5pm - Closed Thursdays

Craftsmen you can rely on, Quality you can trust...

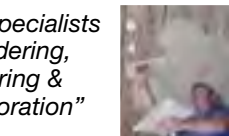
01984 629131

07788 810576

*"Recognised Specialists
In Lime Rendering,
Lime Plastering &
Building Restoration"*



**WOODLOUSE
CONSERVATION**



**Lime Plastering • Lime Rendering
Traditional Damp Management
Solutions • Cob Work • Stonework
Lime Pointing • Fireplace Restoration**

"Restoring properties throughout Somerset & Devon"

www.woodlouseconservation.co.uk

EXMOOR PONY SOCIETY CENTENARY

ART COMPETITION

To celebrate 100 years since the founding of the Exmoor Pony Society, an art exhibition will be touring the country in 2021, showcasing the joy, beauty and magic of the Exmoor Pony. Selected artwork from this competition will feature in the exhibition alongside invited artists.

Competition Categories

1. Photography – Classes: Landscape; Performance; At Play; Interaction with people or other animals
2. Painting/Drawing – Classes: Oil; Watercolour; Pencil; any other medium
3. Sculpture
4. Handicrafts e.g. needlefelt, embroidery

ENTRIES CLOSE ON 31st OCTOBER 2020

Entrants do not have to be members of the Exmoor Pony Society. Rules and entry forms can be downloaded from the EPS website or obtained from the Secretary:

www.exmoorponysociety.org.uk

**THE WINNER OF EACH OF THE 4 CATEGORIES
WILL RECEIVE A PRIZE OF £100**

Rosettes from 1st to 6th in each class.

Centenary sashes to the overall champion and reserve champion.

Please note: the cost of returning artwork at the end of the tour shall be borne by the entrant, so entries should be accompanied by payment for return postage/delivery. If entries are large or heavy, in the first instance a photograph of the item should be sent to the Secretary with the entry form with details of size/weight to check whether it can be accommodated.



News from the Exmoor Pony Centre, Ashwick, Dulverton TA22 9QE

It is great that things are steadily getting back to some sort of normality here at the centre and we have enjoyed welcoming visitors to see and learn about the ponies along with some experienced riders for trekking. All visits and rides must be booked in advance so please call or email to book in. As circumstances change, we will be reviewing other possibilities so keep an eye on our website for news.

We are running four sessions throughout the day for visitors which includes a tour of our stable yard not usually open to the public. Here you will often find Buttons and Borage who love a fuss from all our guests. Both Buttons and Borage, along with Jensen and Pascoe, are learning to become part of our riding team here at the centre. They have been ridden on the moor and down the lanes checking out the local habitats, neighbours and farm machinery – all good for their education.

Recently, Bodie and Doyle travelled to a lovely new foster home having been grazing ponies in a variety of places over the last few years – including Woolacombe. The infamous Andy and

Banksy are entertaining our visitors by either hurtling around their new paddock or lying flat out in the sun!

The total running cost of the Moorland Mousie Trust and The Exmoor Pony Centre is around £135,000 a year. Due to the current situation, we are not making the income we would usually during the summer months. If you would like to make a donation to help the ponies please look on our website or give us a call to find ways of donating.

Summer brings an increase in visitors and traffic so, if you are driving across the Moor, please be extra aware of our Exmoor ponies and their foals, and drive carefully. You never know when one might suddenly appear in front of you!

For booking a visit or ride please get in contact with the details below.

Website: www.exmoorponycentre.org.uk

Facebook: [www.facebook.com/](http://www.facebook.com/TheExmoorPonyCentre)

TheExmoorPonyCentre

Instagram: [#exmoorponycentre](https://www.instagram.com/exmoorponycentre)

Email: info@exmoorponycentre.org.uk

Tel: 01398 323093



Plastering **Renovations**
Stonework **New Builds**
Extensions **Lime Plastering**
Groundworks **Restoration**
Treatment plant installation

t: 01398 323 745 m: 07833 376 737 www.lcbuildingcontractors.co.uk



WOODCOTT

Building Services & Property Maintenance

All house and garden work undertaken

Tel: 01398 322981 Mobile: 07960 944964

Email: woodcottbuildingservices@gmail.com

Contact Martin for a quotation Smaller jobs always welcome

PARISH AND TOWN COUNCILS

Bampton T.C.: Clerk: Penny Clapham	clerk@bamptontowncouncil.gov.uk	01647 253066
Brompton Regis P.C.: S Buchanan	brpcclerk@gmail.com	01984 641706
Brushford P.C.: Clerk: Clive Knight,	cliveknight@me.com	01398 324140
Cutcombe P.C.: Clerk: Nic Kemp	cutcombeclerk@gmail.com	07852 813983
Dulverton T.C.: Sec: Miss A. Rose	clerk@dulvertontowncouncil.co.uk	01398 324561
East Anstey P.C.: Clerk: Mrs Jill Larcombe	eastansteypc@yahoo.co.uk	01884 252647
Exford P.C: Clerk: Nic Kemp	clerk@exfordparishcouncil.org	07852 813983
Exmoor P. C.: Clerk: Charlotte Hornsby	exmoorparishcouncil@gmail.com	01643 831535
Exton P.C.: Clerk: Andrew Moore	clerk@extonparishcouncil.co.uk	01984 641539
Oakford Parish Council: Chair: Mr John Phillips	patsyphili@aol.com,	07583 146498
Upton P.C.: Clerk: Mrs P Purvis	uptonparishclerk@hotmail.co.uk	01398 371548
Winsford P.C.: Clerk: Nic Kemp	winsfordparishcouncil@gmail.com	07852 813983
Withypool & Hawkrigde P.C.: Clerk: Charlotte Hornsby	withypoolhawkrigdeparishclerk@gmail.com	01643 831535
Wiveliscombe T.C.: Clerk: Sarah Towells	townclerk@wiveliscombe.com	01984 631914

LOCAL CHURCHES AND CHAPEL CONTACT NUMBERS

All Saints Church, Dulverton: The Rev. Martin Collett, Assistant Curate		01398 324211
Dulverton Benefice/All Saints/Community choirs: Gary Cooper		07419 212354
All Saints Church, Dulverton, Bell Tower: Anne Markwick		01398 323823
Brompton Regis with Withiel Florey, Upton and Skilgate: The Rev. Andrew Thomas		01398 323018
Brushford: The Rev. Martin Collett, Assistant Curate		01398 324211
Exmoor Benefice: The Rev. David Weir, The Rectory, Exford, TA24 7LX		01643 831330
Catholic Church: Priest: Father Michael		01643 702201
Dulverton Congregational Church, Chapel St: Minister:		01398 323943
The Traditional Anglican Church: Loxbear, Priest Reverend Aird		01769 581042
Exmoor Benefice Choir: Mrs B. Staples		01643 851396
St Peter's Church Oakford: Rev'd Stephanie Gordon-Jeffs	office@exevalleymissioncommunity.org	01884 250417

ARTS

The Arts Society Exmoor: Mrs Penny Pulver (Chair)	www.theartssocietyexmoor.org.uk	01398 331007
Community Music Events: Gary Cooper	www.allsaintsdulverton.org.uk	07419 212354
Dulverton Art Group: Sec: Mrs G Rose, 2 Stable Mews, The Square, Witheridge		01884 860495
Dulverton Camera Club: Sec: Peter Main, 4 Valley View, Morebath, Tiverton, EX16		01398 331556

Dulverton Players: Chair: Les Silverlock	01398 341850
Oakford Players, Chair: Mr A Holmes tholmes556@btinternet.com	01398 351665
SPORTS CLUBS	
Anstey Short Mat Bowls: Chris Dale	01398 341615
Bridgetown Cricket: Sec: Mr. D. Sherring, Mid-Wicket, Bridgetown, Dulverton TA22 9JN administrator@bridgetowncc.co.uk	
Brushford Short Mat Bowling: Sec: Sam Takle	01398 324147
Cutcombe Cricket: Sec: Mrs Maria Adams, 1 The Beeches, Wheddon Cross	01643 841036
Dulverton Angling Assn: c/o Pat Veale, 9 High St., Dulverton, TA22 9HB	01398 323409
Dulverton Badminton Club: Sec Judy Smith	01398 324353
Dulverton Cricket Club: Robert Dubery	01398 323474
Dulverton Cricket Club, Colts: Mrs Christine Dubery	01398 323474
Dulverton & District Tennis Club: Orla Jones	07783 930700
Dulverton & Exmoor Squash Club: Membership Sec: Chris Winter. chriswin@aol.com	07710 046107
Dulverton Jnr. F.C: Sec: Mrs Christine Dubery	01398 323474
Dulverton Netball Club: Sec Lindsay Smith, 25, Nicholas Close, Brushford	01398 323834
Dulverton Snooker: Sec: Mr. D. Bodger, 39 Fishers Mead, Dulverton, TA22 9EN	01398 323899
Dulverton Sports and Social: Chair: Carl Hooper	01398 324494
Dulverton Sportsfield Management: Adrian Smith	01398 323834
Dulverton Senior Table Tennis: Richard Archer	01398 324160
Dulverton Town F.C: Sec: Mr. J. Atkins, 1 Exebridge, Dulverton. TA22 9AY	01398 323787
Exmoor Croquet Club: Chair: Connie Heywood	01398 341556
Moorland Hall Sports: info@wheddoncross.org.uk	
Wimbledon Fly Fishers: enquiries@fishingthewest.co.uk	
PRE-SCHOOL GROUPS	
All Saints School & Nursery:	01398 323231 & 01398 323223
Anstey Parent and Toddlers Group: E A School	01398 341369
Little Owls Nursery at All Saints C of E School, Dulverton	01398 324360
Rhythm n' Brews Toddler Group: Sabine Cooper	07419 212354
SCHOOLS	
All Saints C of E School: Fishers Mead TA22 9EN	01398 323231
Brompton Regis Toddlers: Mrs.S. Julian, Court Place Farm, Skilgate	01398 331031
Cutcombe C of E First School: Wheddon Cross, TA24 7DZ	01643 841462
Dulverton Junior School: Barns Close West, TA22 9EE	01398 323223
Dulverton Children's Centre: All Saints School, Fishers Mead TA22 9EN	01398 324360
Dulverton Family and Toddlers Group:	01398 324329
Dunkery PreSchool: Supervisor: Mrs. S. Matravers, Shute Close, Cutcombe, Minehead	01643 841008
East Anstey Primary School: East Anstey, Tiverton, Devon, EX16 9JP	01398 341369
Little Owls Nursery: All Saints School, Fishers Mead TA22 9EN	01398 324360
WOMEN'S ORGANISATIONS	
Anstey W.I.: President: Mrs. C Wood	01398 341472
Brompton Regis W.I.: Sec: Mrs. P. Beecham, Rose Cottage, Brompton Regis	01398 371407
Cutcombe & District M.U.: President, Pam Anson	01643 851616
Cutcombe & District W.I.: Mrs. Pam Anson	01643 851616
Dulverton & Brushford M. U.: Mrs A. Gregory, 22 Jury Road, Dulverton, TA22 9DU	01398 323587
Exford Moorhens: Chairman: Mrs. I. Collett	01643 831016
Oakford Moorland Ladies Club: Chair: Patsy Phillips Patsyphili@aol.com	01398 351648
YOUTH ORGANISATIONS AND ACTIVITIES	
Bampton Scouts/Cubs/Beaver748s: Tony Weiss	01398 331901
Dulverton & District Young People's Project: Chair: John Preston	01398 323862
Dulverton Ballet: Mrs Wightmore, Flat 3, Easter House, St. Andrews St. Tiverton	01884 253999
Exmoor Community Youth Club: Organiser Laura Tasker, Fridays 6 – 8 pm	01643 831125
OTHERS	
Abbeyfield House	01398 324136
Bampton Library and Resource Centre, Station Road	01398 332466
Brushford Parish Hall: Bookings enquiries@brushfordparishhall.org.uk	07941 139846
Brushford Luncheon Club: Treasurer: Margaret Albery	01398 324587

Care Direct for help and advice: www.somerset.gov.uk

Cutcombe Flower & Produce Show: Sue White

Dulverton Action Group: Magdalena Harding

Dulverton & District Civic Soc: Kathy Currie

Dulverton & Southern Exmoor Twinning: Chair: Steve Ford, Dulverton

Dulverton Bridge Club: Sec: Brian Hughes, www.Bridgewebs.com/dulverton

Dulverton Dance:

Dulverton Ballroom Dance: Sec: Mrs Christine Dubery

Dulverton Development Forum: Sec: Mrs J. Ross

Dulverton Films: Jan Ross

Dulverton Fellowship for Mental Health: Marion Silverlock

Dulverton Gardening Club: Roger Hammond

Dulverton Group Exmoor Society: Sec: Dr Ken Mills

Dulverton Vets

Dulverton Vintage Films: Magdalena Harding

Dulverton Voluntary Drivers: Mike Beale

Exe Valley Market Bus: Chairman: Colin Radford, cjrbutterdale@gmail.com

Bookings (To include private use) Jennie Chappell smilerjenniec@hotmail.com

Exmoor Patient Group: Chair: Sandra Wilson, W Nightcott, Dulverton TA22 9RT

Exmoor Beekeepers Association: Sec: Caroline Ralph exmoorhoneyshow@gmail.com

Exmoor Community Bus Assn: Sec: Mr. G Knock, 6 Pounds Close, Brushford TA22 9AL

Exmoor Pony Centre: Ashwick, Dulverton, Somerset, TA22 9QE

Exmoor Pony Society: Sec: Sue McGeever, Woodmans, Brithem Bottom Cullompton, Devon EX15 1NB

Exmoor Rotary Club: Humphrey Berridge (PRO), Station Hse, Luke St, Bampton

Good Neighbours: Sandra Collett

Oakford Village Hall: Chair: Mr D Bannister

davidbannister10@hotmail.com

Bookings: Mrs Dawn Williams

dawnwilliams1@gmail.com

Royal British Legion Dulverton: Peter Donnelly

TA22 Voluntary Lift Scheme (formerly Brushford Voluntary Lifts): Chair: T. Wilson

Tiverton Model Aero Club: Sec: Mr. P Veale, 9 High St., Dulverton TA22 9HB

U3A Exmoor: Yvonne Moorfoot, 3 Lamb Back, Dulverton

Village Agent Jane Lillis

janel@somersetccc.org.uk

West Somerset Advice Bureau:

0300 1232224

01643 841142

01398 323 785

07493 518350

01398 323016

01398 331219

01398 341850

01398 323474

01398 323818

01398 323818

01398 341850

01398 323954

01398 331482

01398 323285

01398 323785

07743 885115

01398 351666

01398 324687

01984 656240

01398 324555

01398 323093

01884 839930

01398 332324

01398 324211

01398 351135

01398 324035

01398 323030

07528 326880

01398 323409

01398 323529

07958 415270

01643 704624

EXE VALLEY ELECTRICAL

For all your electrical needs

DOMESTIC ♦ COMMERCIAL ♦ AGRICULTURAL

- ▶ Electrical installation, maintenance & repairs
- ▶ Full & part rewires
- ▶ Additional sockets & lights
- ▶ Security lighting
- ▶ Portable appliance & installation testing

Approved Installation Standard for
Electrical Installation Contractors



APPROVED CONTRACTOR



Call Robin Allen, your friendly local electrician

Tel: 07773 366 751

Dulverton based
ALL WORK GUARANTEED

BUSINESS & ACCOUNTING SERVICES

Offering a friendly, efficient service at a competitive price

***Management Accounts, Forecasting, Budgeting,
Business Advisory, PA Services, Book Keeping, VAT, Year End***

Please call us for a free no obligation meeting
to discuss your business needs

01398 322828
07528 530476
services@veristic.net

Veristic

Folding Chairs/Table Hire
Licensed Waste Carrier
House Clearance
Seasoned Logs
Bric a Brac
Valuations
Antiques

Brushford
BIZARRE

Tony Skilton

Carnarvon Arms Garage

Brushford TA22 9AG

Tel: 01398 324 150

Mob: 07802 357 962

Email: taskilton@aol.com



Tel: 01884 257808

- **NEW BUILDS**
- **EXTENSIONS**
- **RENOVATIONS**
- **LOFT CONVERSIONS**

Jimsam View, Canal Hill, Tiverton, Devon EX16 4JE

Tel: 01884 257808

Mobile: 07977 993526

Email: nick6692@sky.com

