

November
December
2022

EXMOOR NEWS



Bringing community news across southern Exmoor since 1985

FREE

Bampton
Bridgetown
Brompton Regis
Brushford
Bury

Cutcombe
Dulverton
East Anstey
Exebridge
Exford

Exton
Hawkridge
Luxborough
Molland
Morebath

Oakford
Simonsbath
Skilgate
Upton
West Anstey

Wheddon Cross
Winsford
Withiel Florey
Withypool
Wiveliscombe

Exmoor Landscaping



- Local and reliable
- Clearance and ground works
- Stonewalling and steps
- Patios and ponds
- Fencing and treework
- Turf supplied and laid



Tel: 01984 640530
or Mobile: 07974 141790
or visit www.exmoorlandscaping.co.uk

Larchwood Cattery
EX16 9JL



Purpose built
Individual heated chalets
Spacious outdoor runs

Tel: 07598813621

Email: info@larchwoodcattery.co.uk

www.larchwoodcattery.co.uk



Cover image 2022: © Robert Hatton
roberthattonfineartphotography.com

If you'd like to see your photo on the cover, send us a low resolution image and if we can use it, we'll ask for a high resolution version.



TONGDAM
Thai Restaurant

NEW OPENING TIMES
OPEN 5 EVENINGS
LUNCH SATURDAY & SUNDAY ONLY
CLOSED TUESDAY & WEDNESDAY

26 High Street | Dulverton | Somerset | TA22 9DJ
01398 323 397 for reservations

www.tongdam.com



EXMOOR NEWS

COVERING SOUTHERN EXMOOR

Hi there

Welcome to the latest issue. Is it me, or has that year gone really fast?! We have a huge range of things to read or places and events to go to, plus help in these uncertain times.

If you use a business or go to an event that you've seen in our magazine, please let them know where you saw it. It's good for them to know the advertising is working and good for us to know as well.

Don't forget, any community, charity or local information goes in the magazine for free. If you run or help with a group that has regular events, you can ask to go on our Contributor list, and you'll get a reminder before the next deadline. It's usually one email every couple of months - let us know by emailing exmoornews@gmail.com Please check our website for top tips when sending in copy.

Best wishes, Ceri Keene and Claire Savill

E: exmoornews@gmail.com T: 07497 914441 W: www.exmoornews.co.uk

Post: The Old Stores, Brushford, Dulverton, Somerset, TA22 9AH

We take our responsibility to maintain high editorial standards seriously.

Should an error occur please do not hesitate to contact us.



The deadline for the
Jan/Feb '23 issue of
the *Exmoor News* is

Thursday 1st December 2022

Printed by Brightsea, Exeter



Exmoor News Magazine Advert Sizes & Rates - 3,000 printed copies, estimated readership 9,000

Size 1	Size 2	Size 3	Size 4	Size 5	Size 6
60 wide x 92 high £20.35 Mon £27.50 Col	124w x 92h mm £40.70 Mon £55.00 Col	60 W x 188h mm £55.00 Col	188w x 92h £82.50 Col	124w x 188h mm £110.00 Col	190mm x 190 mm (*no bleed) £165.00 Col

Mon = Mono, black and white.
Col = Colour.

High resolution 300 dpi PDF or image is required. Any query please email exmoornews@gmail.com

*Bleed is when the printed image goes over the edge of the cut page. The page is 210mm x 210mm and we ask for 4mm bleed.

Whilst every effort is made to ensure the accuracy of the information in this magazine, no liability can be accepted by the editors and publishers for any loss, damage or injury caused by errors in, or omissions from, the information given. Please also note that in the publication of trade adverts, the editors do not guarantee the quality of services provided by any of these advertisers. The editors reserve the right to decline to publish any item and to amend or shorten material. Opinions expressed are not necessarily those of the publisher/editor. All advert bookings are subject to our terms and conditions see www.exmoornews.co.uk/payments.

Under the Data Protection Act, we have a legal duty to protect any information we collect from you. We take appropriate security measures to safeguard your data and apply security standards and controls to prevent any unauthorised access to it.



**Midweek
Specials**
Sunday - Thursday
Book 2 nights
get one FREE
T&C Apply

Tarr Farm Inn

Telephone: +44 (0)1643 851507

eMail: enquiries@tarrfarm.co.uk

Tarr Steps, Dulverton, Exmoor, TA22 9PY

www.tarrfarm.co.uk



An Accidental Author

Anstey WI presents:

Sue C Medcalf - An Accidental Author

An open meeting for adults and children at Anstey Community Hall, Yeo Mill, EX36 3NU, on Wednesday 2 November at 7.30 pm, with children's book author, Sue C Medcalf. Signed copies of Sue's books will be available to purchase at the end of her talk.

Read all about Sue here: www.itchybaldscratchet.co.uk/sue-c-medcalf-author

We charge £4.00 for visitors to our meetings. Entry includes refreshments.

OAKFORD VILLAGE HALL
WITH OAKFORD PLAYERS
PRESENT

**"THE TREASURE OF
NOBRAINS ATOL"**

A MURDER MYSTERY

18th & 19th NOVEMBER 2022
at 7.30pm
in
OAKFORD VILLAGE HALL

TICKETS £15.00 to include a Hot
Supper
Tel: Dawn Williams 01398
324035 or 07733949295
LICENSED BAR



Christmas Bingo:
Friday 25 November
Shillingford Village Hall: for the
restoration of the hall fund

Doors open 7pm—eyes down 7.30pm.
Lots of good prizes; one line, two lines,
and full house.

Draw prizes, teas, coffee, biscuits and bar.
For more details, phone
Caroline: 07739 479242.



DULVERTON GARDENING CLUB
PRESENTS
"BARNSDALE AFTER GEOFF - 1996 TO PRESENT DAY"
WITH
NICK HAMILTON



THURSDAY 17th NOVEMBER
DULVERTON TOWN HALL – ENTRY BY TICKET ONLY
AVAILABLE AT DULVERTON POST OFFICE Tel: 01398 323474
£8 per person

DOORS OPEN AT 6.45pm **RAFFLE & REFRESHMENTS**

BRUSHFORD PARISH HALL

Pub Quiz



In aid of Air Ambulance & Cancer UK

&

PopUp Bar

Saturday 12th Nov

19:00 – 23:00

We welcome your community information - events, groups etc, it all goes in free.



exmoornews@gmail.com

07497 914441

BRUSHFORD PARISH HALL



Brushford Christmas Fair

Saturday 26th Nov

13:30 to 16:00



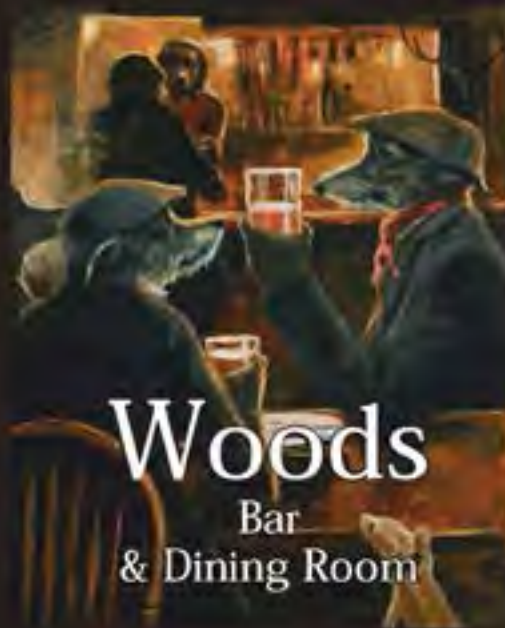
N. H. Hopkins

General Builder

All Building Work Undertaken

Tel: 01398 323687

Mob: 07790 711 125



Good Pub Guides
National Wine Pub
of the Year
2010-2021

Situated in the beautiful
Exmoor National Park at
4, Bank Square, Dulverton,
Somerset, TA22 9BU
01398 324007

woodsdulverton@hotmail.com

woodsdulverton.co.uk



Lots of prizes including chicken dinners.

Line prizes and raffle.

Free tea, coffee and biscuits.

Bampton Bingo: Friday 18 November

Bampton Riverside Hall:



for Bampton Twinning Association.

Doors Open 7pm—eyes down 8pm.

All welcome.

For more information call

Anita 01398 332007



CHRISTMAS



**Wednesday 7th December
Shillingford Village Hall:
for the EVBH.**

Doors open 7pm—
eyes down 7.30pm.
Lots of good prizes;
one line, two lines, and full house.

*Draw prizes, teas, coffee,
biscuits and bar.
For more details,
phone Caroline: 07739 479242.*

HUGH HARRISON

**ANCIENT TIMBER
CONSERVATION
EUROPE'S EXPERT CRAFTSMEN**



**WEDNESDAY 30 NOVEMBER
AT 10.00 FOR 10.30
RIVERSIDE YOUTH CLUB,
KEMPS WAY, DULVERTON**

EXMOOR
u3a

NON-MEMBERS ARE WELCOME
FREE ADMISSION AS AN INTRODUCTORY OFFER



Exmoor U3A—Dulverton

In December and January, we have a break from our regular monthly meetings.

We resume again on Wednesday 22 February for Mike Buckland's talk: "Operations over Iraq 1992 -96 – RAF Missions." This promises to be a fascinating presentation that gets us off to a flying start for 2023. Mike is known to many in Dulverton and the surrounding area. He will talk about his extensive experience as a jet fighter pilot, having flown some 60 sorties over Iraq. Equipment to illustrate how pilots live and survive post-ejection over enemy territory will be on display.



Winsford Moor Movies Autumn Season

November - December

1st Nov Operation Mincemeat (2021) 12A Drama/History. Stars Colin Firth and Matthew Macfadyen.

The remarkable true story of the elaborate plot cooked up by British Intelligence in 1943 to fool Nazi Germany into thinking the allies planned to invade Greece and Sardinia, rather than their actual target, Sicily. The corpse of a tramp was invested with a fake identity and dumped off the coast of Spain carrying the plans for the supposed invasion.

6th Dec The Outfit (2022) 15 Crime/Drama. Stars Mark Rylance and Johnny Flynn.

The year is 1956. Leonard (Mark Rylance), a master English tailor who's ended up in Chicago, operates a corner tailor shop with his assistant, where he makes beautiful clothes for the only people around who can afford them: a family of vicious gangsters. One night, two killers knock on his door in need of a favour and Leonard is thrust onto the board in a deadly game of deception and murder.

Winsford Village Hall 7.30pm; £3 members & £5 Non-Members.

See village websites for membership: www.winsfordvillage.info www.winsfordexmoor.org.uk

Bampton Heritage Centre Gift Shop

If you are looking for the perfect gift then we have a fantastic selection. New in this season –

Our Bampton GWR poster comes in A3 or A2 size or a Bampton tea towel

A Bampton mug, black design, now with limited availability!!

New colour Bampton bag

Wooden Bampton key ring in presentation pouch

New design greetings cards – Festive packs or individual blank cards

GWR and OS Map Coasters plus tins of cookies & bags of fudge

Available from Bridge House Café, or email bhvcsales1@outlook.com – *Delivery charge to cover postage and packing for orders outside Bampton.



Registered Charity Number: 1156194



Dulverton Town Hall

Friday 11 November

WHERE THE CRAWDADS SING (Cert 15)

Director: Olivia Newman

125 mins

From the best-selling novel comes a captivating mystery. Abandoned as a girl, Kya (Daisy Edgar Jones) raised herself in the dangerous marshlands of North Carolina. For years, rumours of the 'Marsh Girl' haunted Barkley Cove, isolating the sharp and resilient Kya from her community. Drawn to two young men from town, she opens herself to a new and startling world. However, when one of them is found dead, Kya immediately becomes the main suspect. As the case unfolds, the verdict as to what happened becomes increasingly unclear, threatening to reveal many secrets.

Friday 25 November

FISHERMAN'S FRIENDS:ONE AND ALL (Cert 12A)

Directors: Meg Leonard, Nick Moorcroft

111 mins

The sequel to the 2019 hit comedy charts the next instalment of the Fisherman's Friends' uplifting true-story. Following the unexpected success of the band's debut album, *No Hoppers, Jokers and Rogues*, we rejoin them almost a year later, struggling with the pressures, pitfalls and temptations of their newfound fame, second album syndrome, and performing on the Pyramid Stage at Glastonbury.

Friday 16 December

ELVIS (Cert 12A)

Director: Baz Luhrmann

159 mins

From his rise to fame to his unprecedented superstardom, rock 'n' roll icon, Elvis Presley (Austin Butler), maintains a complicated relationship with his enigmatic manager, Colonel Tom Parker (Tom Hanks), over the course of 20 years. Central to Presley's journey and happiness is one of the most influential people in his life – Priscilla (Olivia DeJonge). The story delves into the complex relationship between Presley and Parker.

Tickets-Dulverton Films members £3, non-members £4.50, students, accompanied by an adult, £2.50. Book in advance at Dulverton Post Office (Tel: 01398 323474) or email janaross2003@yahoo.co.uk. Bar open from 7pm.

WINTER CLOSURE

From November 1st to March 1st

The Centre in the church will be closed for the winter but we will be bringing the Centre out to you.

WATCH OUT FOR...

- ⇨ Displays in LARC (Bampton Library)
- ⇨ "My Bampton" – come & share your memories of Bampton over tea and cake.
- ⇨ Connect With Our Collection – pop ups in a local venue for you to come and handle items from our collection.
- ⇨ Pick up a Bampton Gift – Bampton railway posters, tea towels, mugs, key rings, greetings cards & much more. Available from The Bridge House café, or drop us an email at bhvcsales1@outlook.com & we can deliver for postage cost or free in Bampton.
- ⇨ Follow us on Facebook & Instagram for upcoming events & more Bampton Heritage archive photos.

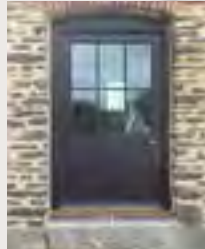
BAMPTON HERITAGE & VISITOR CENTRE



Browns of Dulverton
www.brownsfordulverton.com
11 01398 322933



WIVELISCOMBE JOINERY LTD



- Quality Traditional Joinery -

All made in the heart of Wiveliscombe.
Unit 6, Station Road, Wiveliscombe, Somerset, TA4 2LX.
tel: 01984 624638 email: contact@wiveliscombejoinery.co.uk
www.wiveliscombejoinery.co.uk

TRAX

LAND & WATER MANAGEMENT



- Water Treatment/Filtration
- Borehole & Spring Water
 - Pumping Systems
- Water testing/sampling



- Excavations & Groundworks
- Robocut for topping brambles/bracken etc on steep ground & Rotavator attachment
- Site prep and clearance

CALL NOW FOR A FREE QUOTATION
EXMOOR AREA

01643 851548 / 07817713693
www.traxgroundworks.co.uk

Bampton bowls...

New to playing bowls? Want to give it a go? Come along to short mat bowls at Bampton Community Hall: Tuesdays 2.00pm to 4.30pm or 7pm to 9.30pm.

You can be sure of a warm welcome at either session; instructions given and bowls to borrow until you decide you like playing and can buy your own.

Call Chris on 01398 332039 for more information.

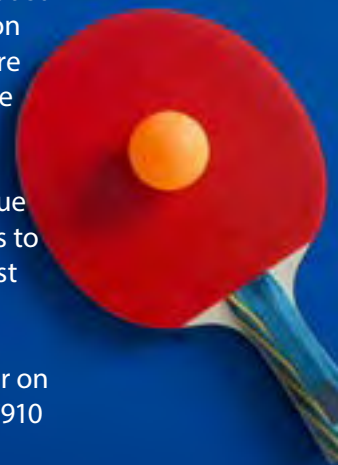


Table tennis players wanted

We meet for social play from 7.30 until 9.30pm on Monday nights at St Michael's Community Hall, Station Road, Bampton, EX16 9NG. We are a mixed ability club and welcome players of all ages.

For those who want to play league we are always looking for players to join our team, we play in the West Somerset league.

Please contact either Roy Hooper on 07909 971222 or Di Garner on 07910 335955.



Dulverton Town Band

WE NEED YOU!

Dulverton Town Band is looking for new members. No experience? No problem; learn with us. Experienced? Wonderful—keep brass alive by sharing your skills and expertise. All ages and abilities welcome. Keen to get started? Join us on Wednesdays from 7.30-8.30pm in Dulverton Town Hall, 27 Fore Street, Dulverton TA22 9EX.

Any questions? Just contact Roy on 01984 623332 for all enquiries



Withypool Artisan Craft Fair
 Saturday 26th and Sunday 27th November
 Withypool Village Hall,
 11am - 4.30pm:
 in aid of Minehead Hope Centre Trust.
 Craft Demonstrations and items for sale.
 Fused glass, wood turning, ceramics,
 hand dyed wools and silk, weaving,
 felting, Christmas wreaths, stags horn
 items, Christmas produce, cards, cakes,
 honey and much, much more. Cream teas,
 cakes and soup available all day.
 Free admission.
 Any queries, phone Alison on: 07775
 847934

Making time for you to enjoy life



Providing support and
 housing for older people at
 Abbeyfield House, Dulverton

Please call **01398 324136**
 for more information

Abbeyfield

Dulverton Society
 Making time for older people

Registered National Office: The Abbeyfield Society, St Peters House, 2 Bricket Road, St Albans, Hertfordshire AL1 3JW



HEADSTONES MEMORIALS
INTERMENT PLAQUES
 Hand carved in Dulverton



LAURENCE BECKFORD
 7 JURY ROAD, DULVERTON TA22 9DX
 0772 4452 961 01398 323746
www.beckfordsartworks.co.uk
laurencebeckford@hotmail.com



Dulverton Exmoor Literary Festival

Here at *Exmoor News*, we wear several different hats, including our publishing wing, with over 44 titles produced to date, from children's books to memoirs. So, when we had the opportunity to become a sponsor of the first Dulverton Exmoor Literary Festival, we jumped at the chance. With so many keen readers of all ages across Exmoor and with so many talented local writers on our doorstep, it made sense! Read all about it here...

Programmes are now available and ticket booking is open for this exciting new autumn cultural event. Described as "a new Exmoor festival for story-lovers of all ages", the event is due to take place in Dulverton over the weekend of 19-20 November.

The festival opens on Saturday 19 November, with children's creative writing workshops in Dulverton Library. Throughout the day on Sunday 20 November, in Dulverton Town Hall, there are six hour-long informal talks by bestselling authors and writers. The talks cover a wide variety of topics and include a free yoga meditation session. (*Exmoor News* is co-sponsoring the first event on Sunday, in which animals feature strongly, when award-winning children's author, Claire Barker, and Exmoor farmer and author, Victoria Eveleigh, will be in conversation with Annie Brierly of Devon Libraries.)

Festival speakers also include William Sitwell, Victoria Henry, Katherine Webb, Rob Kitson and Alice Thomson. If you are old enough to remember the national scandal that destroyed the career of North Devon MP, Jeremy Thorpe, in the 1970s, you'll be fascinated to hear Norman Scott recalling their turbulent relationship, as described in his recent memoir, *An Accidental Icon*.

Each talk includes time for audience questions, followed by author book

signing in the festival's in-house pop-up bookshop, provided by Waterstones Barnstaple.

The entire two-day event has been generously sponsored by the following local businesses: Exmoor Character Cottages, Exmoor News, Stockham Farm Exmoor, Hedley Price Funeral Directors, Jeff Pegrum Landscaping, PFG Fabrication, Town Mills B&B, Tozers Solicitors, Ware Construction, Rothwell & Dunworth, First Design Print Web, Stags Estate Agents, Osteo & Physio Tiverton, Maitland Walker Solicitors, The Exmoor Feasting Company and The Exclusive Cake Company.

Festival programme:

<https://bit.ly/3BW8amm>

Event information:

<https://visitdulverton.com/dulverton-exmoor-literary-festival/>

Exmoor News Publishing: <https://exmoornews.co.uk/book-publishing/>



DULVERTON
GATEWAY TO EXMOOR



Day Excursions

OCTOBER

Westonbirt Arboretum & Tetbury (optional)

Tuesday 18th October £31.00pp inc. adm

Slimbridge -Tuesday 20th October Adults £30.50pp/ Seniors £28.50pp

Swindon Steam and/or Designer Shopping Outlet –

Tuesday 25th -£16.00pp coach only

Areospace and Bristol Harbour - With a stop at the Clifton Suspension Bridge - Wednesday 26th -

£30.00pp includes entry

NOVEMBER

Gloucester Christmas Market - Saturday 12th - £17.00pp coach only

Hare and Hounds Carvery & Otter Nurseries - Thursday 17th -£27.50pp includes carvery

Sanders Garden Centre (half day) - Tuesday 22nd £14.00pp coach only

DECEMBER

Bath Christmas Market - Saturday 3rd £18.00pp coach only

Cribbs Causeway Shopper - Thursday 8th - £15.00pp

Longleat Light Display, Roald Dahl – Thursday 15th December £55.00ppAdult, £46.00pp Child

includes entry

Sidmouth Donkey Sanctuary - Carols by Candlelight -

Friday 9th December (evening) £16.00pp coach only

Carvery Lunch and Dartmoor Scenic - TBC Please call to show interest

Tel: 01398 371 271 | Email: info@uptoncoaches.co.uk | www.uptoncoaches.co.uk

We also offer Car Servicing, Repairs, MOT preparation and Diagnostics



exmoor trees

Native trees and shrubs for
hedge and woodland

Call us now: 07971 580057

www.exmoortrees.co.uk



for
Dulverton by Starlight

Friday 4th November



Dulverton Town Hall

Doors open 7pm

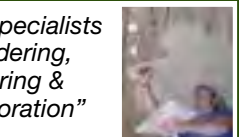
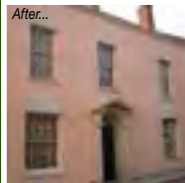
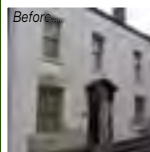
Eyes down at 7.30pm

Light refreshments available

Craftsmen you can rely on, Quality you can trust...

01984 629131
07788 810576

*"Recognised Specialists
In Lime Rendering,
Lime Plastering &
Building Restoration"*



Lime Plastering • Lime Rendering
Traditional Damp Management
Solutions • Cob Work • Stonework
Lime Pointing • Fireplace Restoration

"Restoring properties throughout Somerset & Devon"

www.woodlouseconservation.co.uk

The bookseller's tale

Many of those whom we have featured in this series have deep Exmoor roots or connections. Suzy Wall, who lives with her husband, Tim, at their dairy farm in Morebath, is no exception; her great-grandparents moved to the village in 1906. By birth, Suzy is a Rothwell, a familiar name on Exmoor: her late mother, Caryl, was joint founder of the town's antiquarian bookshop, Rothwell & Dunworth*. And Suzy's own story, as *Exmoor News* discovered, is closely bound up with that of the bookshop, one of the sponsors of this year's inaugural Dulverton and Exmoor Literary Festival.

Her father, artist Richard Rothwell, studied at Camberwell School of Art in south London, and Suzy spent her early years, with brothers Max and Tom, in nearby Dulwich Village. The family moved back to Devon when Suzy was 10 and Caryl, embarked on an English literature degree at Exeter University.

"My mother was full of energy and ideas; she made things happen," says Suzy. Caryl's passion for books - her father had been an author - lay behind her decision to open a bookshop in Taunton, in partnership with cricket enthusiast, Michael Dunworth. Its success encouraged Caryl to go on to open a bookshop in Dulverton, at 41 High Street. Suzy, meanwhile, was on a gap year that took her to Austria,

as a chalet girl, and then to Australia; on her return in 1981, she joined the bookshop. "I loved every minute—and we had such fascinating people living in the flat above!"



Suzy Wall

Rothwell & Dunworth subsequently moved to its current Bridge Street premises; if you visit on a Monday or Tuesday, Suzy's is the friendly face that greets you. The team also includes Bretia Baird, Penny Boon and Cristie Bowcher-Royce. Sadly, Caryl died in 2019 but Max is now the driving force behind the shop's continuing success and development of online sales. "When we started," says Suzy, "the emphasis was very much on country pursuits. Max travels the country buying collections and we now have such a diverse range."

The shop has also expanded—to the

first floor, which was once Suzy's home, but can accommodate only half the entire stock. "The remainder is shelved in Morebath in a former garage that my grandmother had converted to a chapel." That echoes another of the Rothwells' strong local links, to the church of St Stanislaus in Dulverton, the setting for many family weddings, baptisms, and funerals.

The Dulverton Players have also long felt like home to Suzy; she met husband, Tim, when they were appearing in Oscar Wilde's *The Importance of Being Earnest*. "When I was young, I just wanted to act and the Dulverton Players have enabled me to realise that dream," she explains. "The great thing about performing with them is that age is no barrier to a role, as it is for many professional actors."

Acting runs alongside Suzy's busy family life; she is the mother of four and, in February, when her two eldest daughters are due to give birth, she will become a grandmother. "I'm going to be pretty busy," she says, "so I won't be taking part in the next production that the Dulverton Players are staging!" But we suspect that Suzy will be back before too long...

Diane Trembath

*Rothwell & Dunworth, 2-6 Bridge Street, Dulverton, TA22 9HJ
www.rdbooks.co.uk

HOBBS Electrical Contractors Ltd



* Commercial * Domestic * Industrial *

Electrical Installation
Rewires, new builds & renovations
Maintenance & Repairs
Inspection & Testing, Portable Appliance Testing

Dulverton: 01398 323518 Tiverton: 01884 253563

Unit 4, Exebridge industrial Estate, Exebridge, Dulverton, Somerset, TA22 9BL

STEVE BISHOP PEST CONTROL SERVICES LTD

*Covering West Somerset,
North and Mid Devon*

*Control of rural,
residential & commercial pest species*

*Qualified Pest Control
Technicians*

01643 851267

07870 815400

For Fast, Friendly, Reliable Service

Rats, Mice, Moles,
Crawling and Flying Insects
Inc. Wasps, Fleas, Bedbugs,
Cockroaches, Flies.
Bird control and proofing
Electric Fly Killing Units Supplied



Rupert White
INTERIORS



Full Design Service
•
Project
management
•
Comprehensive
range of fabrics
•
Curtain making
•
Upholstery
•
Lighting
•
Accessories
•
Sourcing
•
Floor coverings

Rupert White Interiors

The Stables, Bampton, Devon, EX16 9LA

Tel : 07789 377 412

enquiries@rupertwhiteinteriors.co.uk

Please ring to make an appointment



BARLE

BOOKKEEPING

**Reliable, professional and friendly service for sole traders, partnerships,
not-for-profit organisations and small businesses**

- ❖ **Bookkeeping**
- ❖ **Self Assessment Tax Returns**
- ❖ **Payroll Management including Auto Enrolment**
- ❖ **CIS**
- ❖ **VAT Returns and MTD**
- ❖ **Final Year End Accounts**
- ❖ **Bookkeeping Software Set Up and Training**

**To discuss your business needs please call Rebecca on 01643 831638
or email info@barlebookkeeping.co.uk**

Licensed and regulated by the Institute of Certified Bookkeepers (ICB)
Practice Licence Number: 22357

Hydropower on Exmoor

Beasley Hydro-Electric Power Station is located halfway between Dulverton and Brushford on the River Barle. The original power station was started in 1909 by the Dulverton Electric Light Company, but fell into disuse after World War II. New weirs and a generator building were completed in 2015, with an Archimedes screw turning a 75kW generator—enough for about 90 houses.

The design of the weirs, the intake/outlet channels, and the screw housing were subject to detailed requirements by the Environment Agency, Exmoor National Park and other organisations, to ensure that there was minimal adverse impact from the construction. Water flow is maintained at all times over the weirs to support wildlife, and to add oxygen to the water. The weirs calm the flow of water, providing pools, a series of eel ladders, and a larinier (“fish pass”) to help fish and eels on their difficult task of upstream migration. Our under and above water CCTV system provides security and monitors and records the passage of wildlife such as salmon, otters, mergansers.

The River Barle rises on the top of Exmoor on the Chains, and is known as a river susceptible to “spatey” flow in times of heavy rain. A storm surge can bring down over 5 million tonnes of water a day past the station, and every spate collects natural and anthropogenic (human pollution)



debris from the riverbanks. Much of this debris finds its way to the inlet gate, where leaves and small branches are allowed to continue downstream. Large branches, logs and material such as plastics, footballs, clothing, tyres, and building materials are extracted by hand. In winter about 20kg of non-natural debris is collected every week.



Other artificial material coming downstream (especially after a dry period) includes brake and tyre dust, and engine oil from road surface drains and other concrete surfaces. From time to time, storm overflows from septic tanks are very noticeable.

It is sometimes dispiriting to see the river used as a convenient and clandestine dustbin; for example, recovering nearly 20 packs of outdated, plastic-wrapped meat thrown out of someone’s deep freeze, or the repeated appearance every New Year of dozens of Christmas trees blocking the screw intake.

We are also passionate about increasing public awareness of renewable energy, and give on-site talks to schools and regular lectures to Exeter University science students, and to the U3A.

Tim Cee



FS FRIENDSHIP & SONS FUNERAL DIRECTORS

— Est 2013 —

An independent Funeral Directors dedicated to providing the highest levels of compassion and care to bereaved families 24 hours a day

- Private Chapels Of Rest
- Traditional & Bespoke Funerals
- Funeral Plans from Golden Charter
- Direct Cremations from £995.00
- Home Visiting Service
- Floral Arrangements

For advice and guidance 24 hours a day please contact us

Dulverton Office - 01398 324590

29 High St, Dulverton, TA22 9DJ

South Molton Office - 01769 358101 -

2 George Arcade, South Molton, EX36 3AB

www.friendshipandsons.co.uk



EXMOOR MELODY MAKERS

We are a small friendly group of handbell ringers based on Exmoor. We meet in Exford on Thursdays evenings at 5.30pm and play a wide range of music, both for enjoyment and occasionally at local events.

New members are always welcome. Previous experience or ability to read music is not necessary. If you'd like to give it a try please contact Ines Collett on: 01643 831016 or Jane Laycock on: 01643 831067.

Anstey Playgroup

Every Monday, through
term time, 9.30-11.30
at Anstey Village Hall

Perfect opportunity for kids
& parents/carers to meet
others from our local
community

5 years & under

£2.50 a session

Contact Alice on 07823770168

S.S. ROOFING EST 30 years SPECIALISTS

Roofing & Leadwork Specialists

Slating - Tiling - Leadwork - Flat roofing - Cedar shingles - Chimney works - Fascia/soffits & Guttering

Residential - Domestic - Conservation - Heritage - Listed

“A Company Built on Craftsmanship”

All sizes of projects.



01884 252768 ssroofingspecialist@hotmail.co.uk www.ssroofingspecialists.co.uk



Instrument Sales & Repairs, Books, Sheet Music, Gifts and much more.....

Rock House, 1 Jury Road, Dulverton
Telephone 01398 324164

www.oggiesmusic.com



All Aspects of.....
Alterations
Renovations, conversions & new bathrooms

Plastering & Decorating
Internal & external plastering, rendering, painting, new ceilings, walls & over skimming

Roofing
Repairs, Renewals or cleaning. Chimney repairs & rebuilds. Guttering, cleaned, repaired or replaced

General Building
including retaining walls, stonework, repointing, patios, fencing etc.

General Builders, Plasterers & Decorators

07792 251977
andyhayesbuilder@yahoo.com

Call for our

- Project Management Services
- Exterior House Decoration and
- Rendering

Over 30 Years Experience by Qualified Tradesmen

Dan Stone Accountancy
CHARTERED ACCOUNTANT

- Sole Traders, Partnerships and Limited Companies
- Accounts and Tax Returns
- Business Start Ups
- Making Tax Digital Support
- Charities and Not For Profit
- Payroll • VAT

Contact Dan for a free initial consultation

Tel: 01643 800301 Mobile: 07970 304179
info@danstoneaccountancy.co.uk
www.danstoneaccountancy.co.uk

Exmoor's Local Accountancy Service



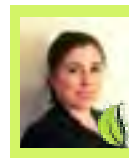
Lyanne Motteram
Foot Health Practitioner
Dip CFHP, MPSPract



Do you suffer from corns, callus -hard skin, fungal nails, athletes foot or ingrowing toenails?

Contact Lyanne
07703 627813
Appointments Available Thursdays

Laura Harding
McTimoney Chiropractor
MChiro, MMCA



Chiropractic Appointments available on:
Monday, Wednesday Saturday

Contact Laura
07980 059807
laurahardingdc@gmail.com

Sharon Reed
Remedial & Sports Massage Therapist
ITEC, Member of CNHC



Massage and Deep Oscillation Therapy appointments available on:
Tuesdays

Contact Sharon
07980 956324
sharonreed58@yahoo.com

Exmoor Wellness Clinic, 36 High Street, Dulverton TA22 9DJ

The Therapist Collection

www.thetherapistcollection.co.uk



Claire Fisher MAR

Reflexology & Indian Head Massage

01823 401502

www.clairefisher-reflexology.co.uk

Lis Jorgensen BSC (Hons)

Medical Herbalist

07816 261996

www.challickwoodherbs.co.uk

Kate Pegram LCCH MARH

Homeopath

07971 218727

www.evolutionhomeopathy.com

Paul Tam Cert Hyp.CS. MHS

Hypnotherapy & Counselling

07768 890781

www.tamtherapy.co.uk

Helena Trump MAHPP

Counsellor & Psychotherapist

01984 624409

www.helenatrump.co.uk

Julia Walder MFHT BSc(Hons)

Aromatherapy & Massage Therapist

01823 400587

www.willowgrace.co.uk

The Therapist Collection: Look After Yourself

It's not as selfish as it sounds. Bring to mind the emergency oxygen mask instructions on an aeroplane...put your own mask on first before helping others. What good are you to others if you're not in a fit state to help?

With winter approaching we all need to be as fit as we can. Healthy in both mind and body, and, apart from exercise and fresh air and our diet, there may still be things that are in the way. Whether they are mental problems or physical, there are many ways in which you can take care of yourself.

Do the usual recommended things: fresh air, exercise, balanced diet, and good sleep, but don't be shy about seeking help.

Paul Tam – Hypnotherapist

Shorter days and cold weather can make you feel low at times; some people cope with this better than others. For some there is a sense of desperation, with worries about escalating bills and prices of essentials, which, when there are dependants, means more pressure and anxiety. This is when help should be sought. Even before this point, hypnotherapy can enable you to better cope and to see through the mind fog. Here you can find a way to zone out and then zone in—to be

better able to approach situations with a more positive mind and the confidence to prioritise matters at hand. You can also learn how to get a better night's sleep, and sleep is so essential to maintain a healthy mind.

www.tamtherapy.co.uk

Claire Fisher – Reflexologist

We all need to look after ourselves more and make time in our busy lives to stop and do something that we enjoy. Doing an enjoyable activity lowers stress, which is so important to leading a healthy life. Stress is the precursor to many illnesses, physical and emotional. It is where we get the word disease from, when your body is at 'dis-ease'.

Reflexology is a relaxing treatment. Working the reflex points on the feet helps to bring about a deep state of relaxation, stimulate the body's ability to heal itself, and return a person to a state of natural balance and well-being.

Regular treatments help to maintain our bodies through our ever chaotic and often stressful lives. Sorting out problems before they occur makes more sense than waiting for a problem to manifest itself.

www.clairefisher-reflexology.co.uk



Come and visit us for a tour and tasting!

Try all our premium spirits and learn about production. Give us a call to book your tour.

01398 323 488
exmoordistillery.co.uk



Service and repair of all sewage treatment plant, pumping and rainwater harvesting equipment.

All manufacturers. Domestic and commercial systems.

Annual Service Contracts and Emergency Call Outs
(Service report sent after every visit)

Call us today to arrange a service visit - 01984 623404

British Water Accredited Service Engineers:

- ✓ Responsive
- ✓ Professional
- ✓ Fully Insured
- ✓ Family Run



Edworthys Carpet & Window Cleaning

NEW! ■ Patio Driveway and Decking Cleaning

■ Gutters ■ Fascias
■ Roof Cleaning ■ Upholstery

Please contact Tom for a free quotation.

Friendly, reliable and very professional

01398 323696 - 07984 057527



Roger L Hammond Architectural Design Services

Free initial consultation
Feasibility studies and design advice
Measured survey, detail drawings
Planning and building regulations applications
Extensions, barn conversions and new build
Listed buildings and conservation work
Specifications prepared
Tendering, procurement and supervision
Residential and commercial
35 years' experience

Reasonable rates

Tawny, 8 Great Meadow, Dulverton,
Somerset, TA22 9DT
Tel/Fax: 01398 324644, mobile 0777 906 0969
e mail: rl.hammond@btinternet.com
website: www.rlhammond-architecturaldesign.co.uk



Merry Christmas

PLEASE CALL FOR SEASON OPENING TIMES

— THE —
**EXMOOR
WHITE HORSE
INN**

01643★831229

— THE —
CROWN HOTEL

01643★831554



— THE —
**WHITE HORSE
LIVERY
YARD**

07791★677050

— THE —
FARMERS DEN

01643★831151



— THE —
EXMOOR STORES

01643★831244

**EXFORD
SERVICE STATION**

— LTD —
01643★831606



**EXFORD BRIDGE
TEA ROOMS**

01643★831304

**COURT FARM
HOLIDAY COTTAGES**

01643★831207

Exmoor Song Premiere

Voices of Exmoor community choir delighted its audience on Saturday 17 September in the Music Room at Woolhanger Manor, North Devon. With a mixture of favourite songs from the past 16 years, chosen by current and past members of the choir, the audience was then privileged to hear the world premiere of *Over The Moor*, a song created by Hannah Fredsgaard-Jones, an emerging music creator. She composed this original piece of music, culminating in the premiere performance, and with a recording and a BBC Radio 3 broadcast of the performance expected in the New Year.

The year-long project was part of a national event entitled *Adopt a Music Creator*, a project run by Making Music, the UK's membership organisation for leisure-time music, in conjunction with Sound and Music. This is a national organisation for new music, funded by the PRS Foundation and Philip and Dorothy Green Trust. Voices of Exmoor participated in the creative process and discovered new music, while the music creator formed a close working relationship with the group, allowing her to respond to the group's unique personality and interests. The pairing was assigned an experienced mentor, Lynne Plowman, to support and guide the creator and group, helping the process run smoothly. The words of the song are



very evocative of Exmoor and the harmonies are beautiful.

The song will no doubt feature in the choir's Christmas concert in Dulverton Town Hall on Saturday 10 December.

Voices of Exmoor—Our Musical Journey

Concert at Woolhanger Manor, 17 September: review by Richard Westcott

One voice...

It was a brave decision to start with just One Voice—but it worked. Which says something distinctive right from the start about this unique choir—it's

prepared to take risks. What other community choir would take the risk of (successfully, in the event) applying to a national music-making project, actively participating in the composition of an ambitious piece, and choosing to make the definitive recording for BBC Radio 3 at a live concert?

It paid off handsomely. *Over the Moor*, created by Hannah Fredsgaard-Jones, with support from Lynne Plowman, was appropriately fresh, with an ongoing outdoors feeling of travel befitting the flowing waters, moving creatures and changing seasons of Exmoor, being original yet clearly part of the English pastoral tradition, and truly illustrative of the place.

The choir itself had asked for a

challenge in the construction of this piece, which was taking a risk, but the resulting various changes of mood, rhythms and dynamics were all well surmounted... the packed house loved it.

Risks were also taken with some of the other choices. Andrew Carter's arrangement of *Autumn Leaves* is complex but, interestingly, this number stood out memorably. Voices of Exmoor produces a characteristic soft blended sound (another aspect perhaps of *One Voice?*), which was remarkably appropriate. With fourteen sopranos, plus smaller numbers of supporting voices, it's not a particularly well-balanced choir, but the homogeneous sound, which rather beautifully minimises individual timbres, overcame many challenges, especially in this particular song.

Another risk was to sing a piece by heart, with no accompaniment. This famous Roberton arrangement of a spiritual, presented early in the programme when the choir was still gathering its confidence, might have run into difficulties, but under Amanda Taylor's attentive and always supportive conducting, was delivered movingly and with conviction.

A further risk was to include a flute for some of the accompaniments, but Hayley Hodges' clean and sensitive playing contributed a lovely extra flavour. On the subject of accompaniment, Joke Routledge's

support demands celebration. Here is a pianist equally at home standing in for an orchestra in a Verdi opera as in a Lloyd Webber or Lionel Bart musical, or a jaunty—not to say virtuosic—obligato to *When the Saints*. The selection of the delightfully varied pieces may have been suggested by individual choir members, but the sequencing and presentation came from the musical director. Her introductions charmingly struck just the right note of informal formality. And the whole programme described a full circle, with a return to that *One Voice*—a conclusion that made for an emotional and fulfilling conclusion.

Between these two renderings, we were treated to some lovely singing,

touching upon a wide range of emotions. It was a wonderfully emotional evening—all in a superb performing space. At least one long-time attender of this choir's concerts declared it to be the best ever. Under the charismatic leadership of Amanda Taylor, Voices of Exmoor can afford to continue to take risks, to win further success, to go on giving delight and pleasure. Indeed, nothing less than to offer the gift of music, Over the Moor and beyond, whether or not it continues to ...*Teach the World to Sing*.

01884 841302
07971 192981

Window Warehouse
DEVON LTD

Bifolds, French Doors, Patio Sliders, Windows and Doors in uPVC and Aluminium.
Conservatories and Warm Roofs, Composite Doors.
Guttering, Fascia and Ancillaries.
Replacement Double Glazing Units.

Phone for a quote • Open to Trade and DIY

Email: [windowwarehouse72@gmail.com](mailto>windowwarehouse72@gmail.com)
Web: www.windowwarehousedevon.co.uk
Facebook: [WindowWarehouseDevon](https://www.facebook.com/WindowWarehouseDevon)

Unit 1 Langlands Business Park, Uffculme, Cullompton, Devon EX15 3DA

Window Warehouse Devon are located between Willand and Uffculme on the B3440 at Langlands Business Park.
Easy access from MS Jc27 or Jc28.
Opening Hours: Mon-Thu 7.30am - 5.00pm
Fri 7.30am - 1.00pm



Brompton Regis Village Hall

Saturday 10th December

Door open 6.30pm

Eyes down 7.30pm

3 prizes for every game

Brilliant Raffle

Tea/Coffee & Biscuits

In aid of Brompton Hall



PETERSPOND GUNDOGS

Peterspond Gundogs is excited to offer various training options to enhance the relationship with you and your gundog.

Bespoke options to suit.

All levels welcome.

Puppy courses including home visit.

One to one or small groups.

For pets and working gundogs.

01643 851823 karenakehurst@btinternet.com

Mobile WhatsApp only 0781 6786085

DULVERTON VINTAGE FILMS

Wed 9th November

GOODBYE CHRISTOPHER ROBIN

starring Domhnall Gleeson,
Margot Robbie & Will Tilston

Wed 14th December

IT'S a WONDERFUL LIFE

starring James Stewart & Donna Reed (1947)

Join us at **1 pm** for our **CHRISTMAS JOLLY**
of nibbles, mince pies and bubbly
- bring a plate of food to share -

Tea, coffee & biscuits provided as usual

Film starts at 2.30 pm
at Fishers Mead Community Centre



**New Build
Extensions
Renovations
Loft Conversions**

Tel: 01398 323789

Mobile: 07837 729484

Email: mikecottrell20@gmail.com

**Dark Sky Evenings @ Holworthy Farm
Wimbleball Lake,
TA22 9NY**

**With Jo Richardson FRAS from Space Detectives and
Pete Richardson from PeteRichardsonAstro
www.spacedetectives.com**

**Saturday 29th October 2022 from 6.30pm onwards –
Observing the Night Sky**

**Saturday 26th November 2022 from 6.30pm onwards –
Observing the Planets**

**Saturday 14th January 2023 from 6.30pm onwards –
Observing the Moon**

**Saturday 25th February 2023 from 6.30pm onwards -
Observing the International Space Station**

**Saturday 18th March 2023 from 6.30pm onwards –
Observing Mars the Red Planet**

Where the weather allows, each of the above events will include stargazing in some of the darkest skies in the country, (Exmoor Dark Skies Reserve) plus a related Astrophotography display by Pete Richardson.

No previous knowledge required. Each event will be delivered in Jo's unique and interactive way, using visual aids and props, alongside the latest telescopic equipment.

**£25 per person to include hot supper/tea and coffee
Limited Spaces**

**To Book, please contact Gillian at Holworthy Farm on 01398 371244
holworthyfarm@aol.com
www.holworthyfarm.co.uk**



J. Coates

Plumbing and Heating

Jason Coates

☎ 07790 345290

- Central Heating
- Bathroom Installations
- All Aspects of General Plumbing

✉ Coa21tes@aol.com



Exmoor BookBinding

01643 841116

sarah@the-burns.com

Repairs & Restoration to all your favourite books.



Albums, Folios
Scrapbooks &
Journals
made to order.

Books Bought

*Local-interest
Countryside &
Country-Sports
Book Collections
especially wanted.*



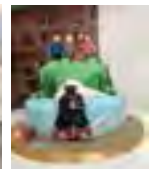
*Also Academic and general
libraries bought.*

Valuations undertaken

Rothwell & Dunworth

Tel: 01398 323169

Email: info@rdbooks.co.uk



COME AND VISIT US

We are a **traditional long established Artisan Bakery** with our own dedicated team of chefs. We (probably) sell the **Best Pies on Exmoor** but have a range of savoury and sweets. Try our Apple Pies or Chocolate Roulade and do not miss our **world-famous Doughnuts** and spectacular iced cakes.

Specialty cakes can be ordered on request – now taking Christmas orders including Christmas Parties.

We have a loyalty card for regular customers. We can produce special orders for occasions and events.

Look out for our online ordering coming soon.

We are easy to find, being a **short walk** along Northmoor Road about 400 yards to the North of the Town Square. There is limited parking outside.

**41 Northmoor Road, Dulverton, TA22 9DH. 01398 324131
hello@exclusivecakecompany.co.uk**

Find us on Facebook and Instagram www.exclusivecakecompany.co.uk

Open: Monday to Friday 7.00am to 2.00pm Saturday 9.00am to 2.00pm

Walking for health



Each Tuesday morning at 10am, our very friendly group meet at various locations. The photo shows the group near Cloutsham recently.

We spend an hour or two walking through our beautiful countryside. The walks are not particularly difficult; we also stop now and again to catch up and to admire the gorgeous terrain and, sometimes, wildlife.

If you would like to join us, please contact either Richard Clarke on 01398 341141 or email: richardclarke567@btinternet.com or Richard Archer on 0777 3160 222 or email: archerr@hotmail.co.uk

We very much look forward to seeing any new walker on a Tuesday.

tiverton film club

Tiverton Film Club's autumn programme got off to a great start this September with a French film, *The Two of Us*, from France—a dramatic story about a deep and passionate love. Our October film was from Malta, *Luzzu*—contemporary story about the effect of the vanishing local fishing trade on a Maltese family.

We meet once a month on Tuesday evenings at Petroc College, Tiverton, and new members are always welcome. Membership costs £25 per person for the 11-film programme, which runs until July 2023, and guests are welcome at £5 per visit. All films are shown on at 7pm.

Our next film (15 November) is *Compartment No6* from Finland—an Arctic road movie on a train! And our autumn programme comes to a close on 6 December with *Flee*—a Danish animated film about a man fleeing from Afghanistan to Denmark. Look out in the next edition of *Exmoor News* for our spring 2023 film choices.



WOODCOTT

**Building Services &
Property Maintenance**

All house and garden work undertaken

Tel: 01398 322981 Mobile: 07960 944964

Email: woodcottbuildingservices@gmail.com

Contact Martin for a quotation Smaller jobs always welcome

It is hard to believe that we are now into autumn; the weather has noticeably changed and—dare I say it?—we will soon be talking about Christmas!

A lot has happened since my last article. In the summer, the sad passing of Queen Elizabeth II, a new King and Prime Minister, plus changes to stamp duty, interest rates and a cut in National Insurance.

So what are the new rates for stamp duty?

Prior to recent changes, the threshold for stamp duty to be paid started at £125,000. The new threshold is now up to £250,000 before stamp duty has to be paid if you are buying a residential home. (Higher rates apply if you are purchasing an additional property).

Property or lease premium or transfer value	SDLT rate
Up to £250,000	Zero
The next £675,000 (the portion from £250,001 to £925,000)	5%
The next £575,000 (the portion from £925,001 to £1.5 million)	10%
The remaining amount (the portion above £1.5 million)	12%

(*SDLT – Stamp Duty Land Tax)

First time buyers

Previously, first time buyers had to pay stamp duty on properties above £300,000. This limit has now jumped to £425,000.

National Insurance

As part of the government’s “growth plan”, National Insurance rates will be cut from November; with the 1.25% rise in NIC’s (National Insurance Contributions), which

took effect earlier this year, being reversed. This change is expected to benefit nearly 28 million people and is worth, on average, £330 in 2023/24.

In the housing market, we welcome the changes to the stamp duty thresholds particularly as they are a permanent change, something that, perhaps, should have been amended a long time ago!

Prices in this area remain strong and stable and there are still a large number of buyers looking to move to and within the West Country and Exmoor. Autumn is historically a busy time for property sales and the recent changes will certainly be encouraging and favourable for those looking to move.

Below is a selection of some of the wonderful and captivating homes that we presently have the privilege of selling:

West Anstey – Guide Price: £1,400,000

Believed to date back to the 15th century, Hill Farm used to be one of the largest farmsteads in the picturesque and quaint parish of West Anstey. Located on the

southern fringes of the Exmoor National Park, this striking and beautifully presented five-bedroomed, detached Grade III listed country residence offers excellent equestrian facilities. It has approximately 10 acres of ground, a range of versatile stone outbuildings, plus a potential annexe, all located within a short distance to some of Exmoor’s finest walking and riding.



**Dulverton - Guide Price
£1,400,000**

A rare and exciting opportunity to purchase one of Exmoor's hidden gems, which is for sale for the first time in over 30 years. Located a few miles



from the small town of Dulverton, sits this beautifully situated, elevated and private country residence, which enjoys panoramic and commanding views overlooking the Barle Valley and beyond. The property offers flexible living accommodation, private lawns and equestrian facilities all within close proximity to open moorland riding and walking. EPC Rating-D.

Exford - Guide Price £495,000

A well appointed, elevated detached three-bedroomed residence located in the heart of the popular Exmoor village of Exford. This property enjoys panoramic views of the rolling countryside, spacious living accommodation, parking, pretty gardens, garage and a former skittle alley. EPC Rating-D.



**Dulverton - Guide Price
£395,000**

Located within the Exmoor National Park this charming two- bedroomed terrace residence is just a short distance from the centre of Dulverton and benefits from a large garden and ample parking. EPC Rating-E



(*EPC- Energy Performance Certificate)



Dulverton - Guide Price £825,000

An impressive, detached and historic Grade II-listed country residence within the Exmoor National Park. Filled with charm and character, this spacious home is located in Dulverton, one of Exmoor's most sought after destinations and is on sale for the

first-time in over 40 years. EPC Exempt.

To find out more about these exciting and inspiring homes (or would like to be registered to hear about other homes due to the market) or if you would like an up to date valuation on your home then please do not hesitate to contact the office on 01398 323271.

Ginny Saunders- Dulverton office local Director



Ginny Saunders
- Local Director



Louise Garner
- Administrator



Rebecca Whitehead
- Property Advisor



Warwick Wilcox
- Property Advisor

Justin Atkins Timber Products



- All types of wooden gates
 - Field shelters
 - Benches
- Small animal hutches
- Log stores



- Dog kennels
- Garden sheds

And much more...

Please don't hesitate to get in touch with any queries of what we might be able to do for you!

All products are made from high quality timber

E. Justinatkinstimmerproducts@gmail.com

T. 07969976642

T. 07864262207

HS Hollam Solicitors



For Family, Matrimonial and Children matters.

For Wills, Lasting Powers of Attorney, and Probate.

Call,
Email,
Or go online.



Tel: 01643 802278 ~ 07951 054915

Email: info@hollamsolicitors.co.uk

Web: www.hollamsolicitors.co.uk

O M Hines Ltd

Office: 01984 623424
info@omhines.co.uk

Oil Tank Specialist

- Fuel Recovery
- Emergency Pump Outs
- Tank Installations
- Filter, Firevalves
- Water Removal
- Tank Cleaning
- Tank Suppliers
- Base / Stand Builders
- Tank Removal
- TI/33D Risk Assessments
- Oil Line Installations
- Temporary Tanks



Diesel Tanks
More Info Online



www.omhines.co.uk

Unit 19-20 Station Road, Wiveliscombe TA4 2LX



Bobcat Hire

Skid Steer Loaders 44", 48" & 66" wide

Mini Diggers ranging from 1.5 ton to 6 ton

Available with Hydraulic Auger, Breakers,
Post Banger, Grab and Tree Shear Grab

Self Drive/Competitive Rates

Tel: 01598 740406

Mob: 07970 914070

Richard Smith – Agricultural Engineer
North Molton, Devon

Say goodbye to 2022 in style!

WIVELISCOMBE TOWN BAND
warmly invites you to our

BIG CHRISTMAS CONCERT

Full of festive favourites, congregational carols & plenty of Christmas cheer!

Merjory Walker - Vocal Soloist
Jake Sharland - Narrator
Conducted by Chris Grubham

THURSDAY 22ND DECEMBER
ST ANDREW'S CHURCH, WIVELISCOMBE

NO TICKETS REQUIRED - JUST TURN UP!
CONCERT BEGINS AT 7.30PM

Donations appreciated to support the band
Refreshments & raffle will be available

"Absolutely fantastic - so uplifting"
"The perfect way to start Christmas"
"So much talent, dedication & enthusiasm; a pleasure to watch"
"Five stars - an incredible evening"
"The best night in town!" "I can't believe it's free!"

Wiveliscombe Town Band
Wiveliscombe's premier musical ensemble

Instagram Facebook



KEITH FARMER BUILDING SERVICES LTD

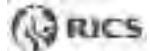
- ARCHITECTURAL DESIGN • PLANNING & DEVELOPMENT •
- BUILDING REGULATIONS • BUILDING CONTRACTORS • PROJECT MANAGEMENT •
- New Builds/ Conversions/ Extensions/ Commercial/ Industrial/ Listed Buildings •

FREE INITIAL ADVICE AND ESTIMATE

01823 666223



www.keithfarmer.co.uk



TIVERTON & TAUNTON FLOORING LTD

39 Bampton Street & William Street Warehouse
Tiverton, Devon, EX16 6AH

HAL WHITE

Mobile: 07770 637 368

01884 257 144



**Diamond
Shine**

**Mobile Vehicle
Valeting**

Professional

Affordable Reliable

**Your local vehicle
cleaning company**

07896 154 176

phil46yam@hotmail.com

Jim Laker Fund autumn update

The Jim Laker Fund has been going since 1997, and was created in memory of the CEO of Exmoor Brewery, who died suddenly in 1996. Jim always liked to support local community projects, and the JLF committee have continued his work by raising funds, which are then given as small grants to groups and organisations across Wiveliscombe and surrounding parishes.

Since its inception, JLF has provided grants totalling over £60,000 to a wide range of recipients including Wivey Skatepark, Wivey Town Band, the local Yarnbombers, In the Mix project, and Wivey Grows. More recently, donations are to be given to St Luke's Church in Langley Marsh for vital repairs, to Huish Champflower Village Hall towards a new cooker, to Wivey Cares for memory sessions, and to a youth theatre group. If your group or organisation would like to apply for a grant, application forms are available from Wivey House or on our website www.jimlakerfund.co.uk



Since 2016, JLF has also raised funds to put on the wonderful Wivey Christmas Lights display. As in 2021, JLF will be co-ordinating with Wivey Community Centre to have a magical switch-on event, with Santa and local children turning on the lights at 6pm on Friday 2 December. Santa will then be available in his grotto to see children that night, or the following two Saturday mornings.

The JLF committee are currently seeking some new people to join our friendly group. (We meet in a pub!) If you would like to join us, or you would like to suggest ideas for fundraising, please get in touch via our website www.jimlakerfund.co.uk or e-mail us info@jimlakerfund.co.uk



It's all about keeping the box

In my mind is an empty shoe box, waiting, timeless
a Christmas Tardis in rose
tinted glass.

And when I get old, I will fill the box to the top of its cardboard
lid with remembrances of the perfect moments
in my life.

I will remember the week my sister and I spent at Granny's; how
her wooden floors streaked with black paint and varnish
squeaked at night.

I will remember the dormer bedroom stacked high with heavy wooden
furniture, glass vases on doilies, sparkling in sunlight, the many
smells of lavender.

And I will pop these still and perfect memories into
my shoe box, always understanding that they
are a gift.

I will pour in armfuls of how I felt that morning, waking to a day
drowsy with cows mooing, their hooves clicking upon stone, metallic sounds
of milking machines.

I will remember the bang and crash of milk churns being wheeled
down the concrete farm track, and their heavy grounding upon the
brick milk-stand.

With my long-lost baby fist, I will snatch a handful of Granny's sunshine
hug it to my heart, and remember how it created origami patterns on the
faded wallpaper.

And, looking back, I will stuff all these memories, and more, into the shoe box,
wishing it were the Tardis, because when I am old, I will invent
many memories, and sometimes
forget the truth.

© Fran Bridger

FITNESS CLASSES FOR ALL

with Linda London

Booking is essential

Number limited during the COVID-19 outbreak

Mon 5.30pm Dulverton Town Hall
Over 50s - Use it or Lose it
(for keeping active)

Wed 9.30am Brushford Parish Hall
Move, Tone, Chat & Go
(for keeping active)

Wed 11.00am Brushford Parish Hall
Easy Exercise for the Older & Wiser
(for the less active)

Thurs 5.00pm Brushford Parish Hall
Over 50s - Toning Legs, Core and Arms
(for a toned body)

Fri 8.30am Brushford Parish Hall
Step, Tone, Sweat & Stretch
(for the very active)

All classes £5.00 (payable by FACCS monthly payment)

Tel: 01 998 325193 Mob: 07866 917654

Email: linda@lindalondon.plus.com

Chris Flay

Plumbing & Heating Engineer



For Quality Workmanship
and Guaranteed Success

RAYBURN

Boiler Servicing & Maintenance
Rayburn Sales & Service
Gas, Oil and Solid Fuel Installations
Oil Tank Replacement - 24 Hour Service
Domestic or New Housing Enquiries Welcome

STANLEY

AGA

25 YEARS'
EXPERIENCE



OIL BURNER CONVERSION

NETHER STOWEY (01278) 732 732

The Arches, South Lane, Nether Stowey, Bridgwater

Philip J Milton
& Company Plc

North Devon's Leading Independent Wealth Managers

Wealth & Portfolio Management*
Wills, Trusts & Attorneyships
Probate & Estate Administration
Financial Advice, ISAs, Pensions*

We are proud to offer a complete range of advice upon all aspects of your financial affairs with some of the most qualified and experienced staff in the Country.

Our clients are like family to us and every staff member is ready to go the extra mile

*Authorised & Regulated by the Financial Conduct Authority



Choweree House, 21 Boutport Street, Barnstaple, Devon, EX31 1RP

www.miltonpj.net 01271 344300 info@miltonpj.net

Exmoor's Winter Storm Resilience

This year, almost all of Exmoor's public paths (97%) were judged—through a nationally recognised methodology—"open and easy to use", according to the National Park Authority's latest annual rights of way report.

The top result comes despite the storms of late February that left a trail of destruction across the Exmoor rights of way network. Our Field Services Team cleared a record 330 trees over eight weeks and the storm also caused longer-term damage to several major routes, including the South West Coast Path and Coleridge Way.

As well as paths being blocked by fallen trees, many path surfaces were badly damaged by lifting root balls. The major surface issues were resolved with support from our great local contractors and all

paths reopened within 10 weeks. Nevertheless, the investments we have made over many years, in bridges, drainage, staff skills and equipment, allowed us to respond and keep the network open and safe for all users to enjoy.

Sue Applegate, Rights of Way & Access Officer at Exmoor National Park Authority, said: "We were extremely grateful to members of the public for taking the time to send in their reports. The great collaborative effort between all our partners including the National Trust, local landowners and communities, was fantastic to see and crucial to getting paths reopened quickly."

A fundraiser was also run by the South West Coast Path Association to assist with our costs. Ranger and Field Services teams together cut back a record 201km of vegetation, cleared a total 485 fallen trees (compared with 187 trees last year), and made and installed 577 signs, 233 signposts, 116 gates and 2 footbridges. They successfully resolved 950 faults and surveyed 35 per cent of Exmoor's 1000km rights



of way network.

Volunteers generously donated 426 hours of their time to support rangers with path surveys. The report includes work by the National Park to prepare for changes to the South West Coast Path at six separate Exmoor sites, as part of a nationwide effort to establish the England Coast Path as the longest unbroken coastal path in the world.

Dan Barnett, Exmoor National Park Authority's Access & Recreation Manager, said: "Despite the challenges of climate change and ever decreasing public funding, our staff and communities have worked hard to maintain a first-class public path network, which underpins our economy and way of life on Exmoor and pays for itself many times over in return. The network provides a world class asset for our enjoyment and physical and mental health that is free to use for everyone."





THREE ATOP WOODLAND SERVICES

- WOODLAND MANAGEMENT
- FORESTRY
- ARBORICULTURE



07547550842
INFO@THREEATOP.CO.UK

SIMONSBATH SAWMILL - THE FUTURE OF YOUR TIMBER

TURN YOUR TREES INTO USABLE WOOD
TIMBER CUT TO ORDER
HISTORIC TOURS AND EXPERIENCES

WWW.THREEATOP.CO.UK



Figs Shop

2 Newton Square
Bampton
EX16 9NE
01398331420
07949 534687
info@figsshop.co.uk
www.figsshop.co.uk



landscape services

www.tjlandscape.co.uk

Garden Design & Landscape Construction

- Fencing • Patios • Paths • Ponds
- Decking • Stone Walls • Turfing

Tim Jackson
31 Lower Meadow Road
Minehead, Somerset.
TA24 6AW

mob. 07748644376
email. tim@tjlandscape.co.uk

www.westcars-tiverton.com



Come and take a look at our brand **New Website** for great offers, a fantastic range of new & used cars and unrivalled customer excellence!

Customer Excellence 2020 **5 Year's Customer Excellence**

Westcars of Tiverton 11 Blundell's Road, Tiverton EX16 4DB
Telephone: **01884 257143** or **01884 230807**
or search **Westcars Tiverton** or **f Westcars Approved**




Exmoor Plumbing

Reliable Plumber no job too small

Radiators, cylinders, tanks, bathroom suites, taps, ballvalves, washers, showers, soilpipes, wastepipes, gutters.

All plumbing work covered

01984 639629 / 07970 632 114

Roy
Hart
Computers

01884 257288

chris@rhcomp.co.uk

computing without tears!

We can offer the **right** solution for the
first time & experienced user

Is your computer running slowly?

Contact **Chris** for a MOT & service to keep it in tip top condition

New Systems ● Upgrades ● Virus & Problem Solving

Wifi, Broadband and Smart TV connections

FAMILY FIRM SUPPORTING COMPUTERS IN YOUR HOME SINCE 1981



Limited edition oak bark tanned leather belts designed to last a lifetime.

Bronze buckles cast in Bampton, belts handmade in Dulverton.

Order bespoke at bordercountrybelts.co.uk or shop at Lance Nicholsons.



DULVERTON ACTION GROUP
Litter-picking (3rd Sunday)

Sunday 20th November

Sunday 18th December

10.30 meet by the Heritage Centre
Everyone welcome and all kit supplied

lendology CIC Somerset West and Taunton

Lending with Heart and Mind

Somerset West and Taunton Council fund a not-for-profit loan scheme for homeowners and landlords*.

We understand the expense of maintaining your home and we work with you to take the stress out of funding repairs, improvements or adaptations.

We see you as an individual, not a credit score. Our knowledgeable team of advisers will guide you through the process of applying for a home improvement loan.

Visit www.lendology.org.uk
or email advisers@lendology.org.uk
www.lendology.org.uk or call 01823 462976

1800 Harton Park, Moulton, Bradford on Avon, Taunton, TA4 6DJ

subject to eligibility

All copies of Exmoor News are available on our website
www.exmoornews.co.uk

EN
EXMOOR
NEWS

NEW DRIVERS WANTED

TA22 Voluntary Lifts

(formerly Brushford Voluntary Lifts)

Volunteers required, no ties,
help as and when you can.

We live in a remote
community with real transport
issues. There are many people
in your area who need help
to attend hospital and other
appointments.

This is a worthy cause that you
can dip in and out of to fit in
with your own family life.

Insurance and fuel expenses
covered, it is just your
time that you have to give,
generally two and a half
to three hours for a lift to
Musgrove Park Hospital for
example.

Please help your community.

Contact Chairman Bart Middleton
on 01398 324006.

If you require a lift, please call the
co-ordinator on

07528 326880

48 hours' notice is required



Nicola Mary Ceramic Decorations and Gifts



Friendly, useful, honest pots that people can enjoy and use every day
Find me on www.etsy.com/uk/shop/NicolaMaryCeramics

PAUL PRIEST

LIME PLASTERING & STONE WORK



Lime Plastering and Stonework Specialist

- Application of Traditional Plasters and Washes
- Restoration and Conservation of old properties
- Damp Management through the use of breathable materials
- All aspects of Plastering and Stonework - both exterior and interior

Mob: 07870 454003

www.paullimeplastering.co.uk

NO VAT CHARGE ON LABOUR

*"Trust in a specialist who is proud to
put his own name to his work"*



NEWS FROM YOUR VILLAGE AGENT

New service offers help and advice to become a Somerset Micro-Provider

The Community Council for Somerset (CCS) has launched a new service to help increase the capacity and variety of care and support services within Somerset. The service helps new and existing sole traders, self-employed or small businesses to join Somerset's network of Micro-Providers.

A Micro-Provider offers paid-for support or care to help local people with everyday tasks, to stay well, and get out and about. There are currently almost 700 accredited Micro-Providers in Somerset, who are making a positive difference to the lives of local people every day. Services provided can range from gardening to cleaning, personal care, mobile hairdressing, and even dog walking.

Two Enterprise Advisors have joined CCS offering free help, advice and specialist signposting to anyone with an idea to develop and set up a small service, or micro-enterprise, to support people in the community.

Cat Sweatman, CCS Enterprise Advisor for West Somerset said, "Becoming a Micro-Provider offers flexible working

hours, interesting and varied work within your local area. It can be done alongside other employment and built up whilst starting up. Flexible hours can help fit work around the school run or perhaps you're retired and want a little extra income to help with the increasing cost of living."

The Somerset Micro-Enterprise Support service is part of CCS and aims to increase the capacity, variety and sustainability of small caring enterprises (Micro-Providers) in Somerset, to ensure that people have access to a real choice of local, flexible support and services to improve their lives.

If you have been considering offering a service to your local community and need advice on becoming a local Micro-Provider then please contact Cat Sweatman, Enterprise Advisor West Somerset, tel: 07746 340546 or email: cat@somersetccc.org.uk

If you would like to chat about becoming a Micro-Provider, or talk with your local Village Agent

about any issue you may have, then please come along to the Dulverton Talking Café on a Thursday morning at Fishers Mead Community Centre between 10.30 am and 12.30pm. No appointment needed—you can just drop in we're here to help. Free tea, coffee and biscuits are always on hand!

Your Village Agent—Dulverton and Exmoor

Please don't hesitate to call or email your local Village Agent if you have any questions or need support. Your West Somerset Village Agent team are here to help.

Jane Lillis tel: 07958 415270 or email: janel@somersetccc.org.uk

Please visit: www.ccslovesomerset.org / www.somersetcarers.org / www.somersetagents.org



Moorhens

The Moorhens was formed in Exford in 1976, after the demise of the WI, when numbers reduced to fewer than 20. But people still wanted to meet up and socialise, especially the ladies of the community. For some time they met in people's houses, but, when numbers increased, it was decided to form a committee and run meetings at the village hall, hence the Moorhens. Today the group meets every second Monday in the month, except January, when the weather is normally too bad to travel.

Every month there is a speaker; since Covid, we have had talks including: *The People who Influenced my Life the Most* by Steven Pugsley, *Drift Wood* by Emma Duke, and *Living with Exmoor Ponies* by Nigel Hill. This October, we welcomed a speaker from the Dorset and Somerset Air Ambulance.

At our next meeting, on 14 November, the topic is *Christmas Decorations* (not wreaths), with Freya Richards; come along and make your own table and Christmas decorations.

Meetings start at 7.30pm in Exford Memorial Hall. We welcome members from across Exmoor; membership is £10.00 a year and £2.00 per meeting (guests £3.00.) Everyone is welcome and there are always refreshments, as well as lots of chat. For more information or just a friendly chat contact Ines on: 01643 831016 or Myra on 01643 831706.

EXMOOR
Shutters & Blinds

"Pleased with customer service!"
"We were all of our windows. Great top quality work. Great light and happy. Would highly recommend. WI Saw Man!"

We are independent specialists offering a beautiful range of made to measure shutters and blinds to suit any interior styling, including perfect options to reduce the energy consumption within your home.

FREE CONSULTATION AND SAME DAY QUOTATION

To find out more call us on:

07508 014353 / 07805 428517 or visit our website at
www.exmoorshuttersandblinds.com



JEFF PEGRUM

35 years' experience in all domestic, equestrian and agricultural landscaping and design.

- Groundworks, drainage and concreting
- Patios and garden projects
- All types of fencing
- Sewage treatment plants – to new regulations
- Internal and external stabling
- Landscaping projects
- Sand schools

07976 951860

Stokham Farm, Dulverton
pegum.jeff@gmail.com

Festival celebrates children's reading and writing

Children are playing a very important part of the first Dulverton Exmoor Literary Festival in November. The festival organisers are very keen to encourage children's reading and writing, with family-friendly author talks, creative writing and illustrating workshops, and an exciting children's writing competition!

The competition is still open but hurry—the closing date is 31 October; full details are on the festival page of the Visit Dulverton website. Primary school age children are invited to write a story about any aspect of Exmoor, in up to 500 words—but it can be far fewer words if children prefer! Competition judge and historical fiction author, Kate Lord Brown, said: "We'd just like our young writers to have fun and let their imaginations fly—and not worry too much about grammar and spelling! In fact, if it's just a few words and an illustration, that'll be absolutely fine too. Write something that you'd like to read!"

The winning entry will be read out at

the festival and included on the Visit Dulverton website. Prizes for the winner and runners up are vouchers from the festival's bookshop partners, Waterstones Barnstaple, who will have a popup shop in the town hall, selling books by all the authors taking part.

On Saturday 19 November, there are fun creative writing and illustrating workshops in Dulverton Library, with local author and illustrator, Annabel Collis. Tickets for children aged 2 to 12 are just £5 for either one or two hours of fun and creativity; all collage materials etc are supplied.

The first talk on Sunday 20 November, in Dulverton Town Hall, is aimed at children and families, with best-selling children's author, Claire Barker, talking about her popular books that feature animals, including the much loved ghost dog, *Knitbone Pepper*. She'll be in conversation with Exmoor farmer and author, Victoria Eveleigh, who has written several books with Exmoor ponies as a central theme, including the *Katy's Exmoor Ponies* series. Tickets for all talks are on sale



via the website.

The entire two-day festival has been generously sponsored by local businesses, with the children's author events sponsored by *Exmoor News* and Stags Estate Agents; writing workshops sponsored by First Design Print Web, and the writing competition by Maitland Walker Solicitors.

For full details go to: <https://visitdulverton.com/dulverton-exmoor-literary-festival/>

DAN PASSMORE
All aspects of garden maintenance

Grass cutting	Garden Tidy up
Strimmer work	Landscaping
Hedge cutting	Driveways, Patios and Paths
Garden clearance	Garden gates and Fencing

For a free quote please call: 01643 831842



Just Curious?

Whether you are thinking of moving or not, we would be delighted to provide you with a **Free Valuation** of your property.



Emerald Seddon

Daughter of Nick Seddon, Emerald has quite literally grown up in the industry and has inherited a wealth of knowledge along the way. Starting off her career 17 years ago leaflet dropping and stuffing envelopes, Emerald has since set up the very successful Lettings division, become a partner of the firm, and now runs the office in the beloved town where she grew up. Being born in Bampton, and grown up in the area, Emerald knows the region considerably well.



Jo Dare

After many years working for a leading estate agent in Oxford, and several years working for a commercial Agency in London, Jo has a wealth of estate agency experience and is now approaching her 10th year with Seddons. She has never regretted her decision to move to Devon and loves all that our beautiful county has to offer.



[seddons.com](https://www.seddons.com)

Sales, Lettings & Mortgages

Bampton | Cullompton | Tiverton





Laura Stanbury

Laura is a key member of the Bampton sales team having worked for Seddons for 7 years. When not in the office you will find Laura on the family farm where she lives with her husband and son, George. Her farming background brings invaluable agricultural experience to the office.



Carol Hughes

Carol is one of Seddons longest serving staff members having worked for the company for over 23 YEARS, you could say that Carol has seen it all, or at least seen every house in Bampton & Dulverton! She has unrivalled knowledge of the local area. She is a keen horticulturalist and has a passion for the great outdoors.



Sue Howe

Sue is a real asset to our Bampton Sales team, with 20 years experience in estate agency. Sue oversees all sales progression, constantly liaising with solicitors and agents to ensure the smooth transition through to completion. As a keen runner, Sue has taken part in multiple half and full marathons.



Steph Blackmore

Stephanie is an experienced negotiator who grew up within the industry - her mum was also an estate agent! Having worked in London and overseas for over 20 years, Steph returned to the area in which she is happiest. She is a keen rider and has 2 horses of her own, and loves nothing more than riding out through the Exmoor countryside.

Covering the whole area of picturesque Exmoor, West Somerset and Mid Devon, Seddons have mastered the combination of expert **customer care**, **local knowledge** and complete **professionalism**, when buying, selling or letting your home.

Bampton
01398 332006

bampton@seddons.com


seddons

Taking you under our wing

Preventing Fraud and Cybercrime Prevention

On Tuesday 6 December, Withypool Village Hall is hosting a free talk by Avon and Somerset Police Fraud Team on fraud and cybercrime prevention. The talk begins at 7pm; admission is free and all are welcome.

The talk lasts about an hour and covers safety tips on how to avoid becoming a victim of these crimes and what to look out for:

- Understanding what fraudsters can do with technology, so you can recognise it.
- Cybersecurity advice, including password safety, phishing and unsafe links, internet security, and how to report fraud.

Booklets, online safety material, and *No Cold Calling* door stickers will be available.

Tea/coffee/cakes served.

Any queries, please contact Alison Morrissey, c/o Withypool and Hawkrigde Parish Council tel: 07775847934.



BRUSHFORD PARISH HALL

Let's get connected Internet Cafe

Are you having problems with the internet or struggling with technology?

If so, just drop in with your appliance, have a coffee and we will try to help sort it out with you.

14.30 to 16.30

First Thursday of the month

Sponsored by the



Local Community Fund



Spirebourne Limited

Liquid Waste Disposal and Drainage Co.

FREEPHONE 08000 855185

spirebourne@hotmail.co.uk
www.spirebourne.co.uk

EMERGENCY CALL OUTS

Septic Tank/Cess Pool Emptying - Any Size

Grease Traps

Drain Blockage Clearance

Various Commercial Liquid Waste Disposal

Servicing

CCTV Drainage Surveys

Pump Repairs & Renewals

Installation of Septic Tanks & Sewage Treatment Works

Mantair Units



Plastering

Stonework

Extensions

Groundworks

Treatment plant installation

Renovations

New Builds

Lime Plastering

Restoration

t: 01398 323 745 m: 07833 376 737 www.lcbuildingcontractors.co.uk

What is Seasonal affective disorder?



Seasonal affective disorder (SAD) is a type of depression that comes and goes in a seasonal pattern.

SAD is sometimes known as 'winter depression' because the symptoms are usually more apparent and more severe during the winter



Symptoms

Loss of pleasure or interest in normal everyday activities

Feelings of despair, guilt and worthlessness Irritability

A persistent low mood

Finding it hard to get up in the morning

Weight gain Feeling lethargic



Treatments

Lifestyle measure - **get as much natural sunlight as possible, exercise regularly and manage stress.**

Light therapy - **a special lamp called a light box is used to simulate exposure to sunlight.**

Talking therapies & antidepressant medicine - **A GP will recommend the most suitable treatment for you.**



Considering selling this Autumn?

At Stags we take great pride in the trust placed in our name and our reputation for achieving outstanding success throughout the selling process.

When you use Stags to sell your home, you will receive independent, impartial advice from a team with a level of expertise and local knowledge that is second to none. In a changing market, there is more to selling a property than just recommending an asking price and placing it online.

If you would like a bespoke service with an experienced agent, please get in touch with a member of the team to book your free property valuation today!



Alexandra Carter

Associate and Branch Manager



Hilda England

Senior Property Sales Negotiator/Valuer

01398 323174
dulverton@stags.co.uk

Our recent sales highlights include these wonderful properties...



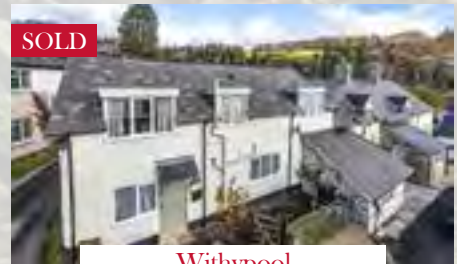
Upton



West Anstey



Dulverton



Withypool





Having difficulty getting a copy of Exmoor News? We can send copies in the post – £12 incl postage and packaging (for 6 issues). If you are interested, please get in touch by email or phone and we will sort it out.

exmoornews@gmail.com
07497 914441

PAUL HARDY
ANTIQUES



Holland House
1 Bridge St
Dulverton
TA22 9HU
www.hardyantiques.co.uk

Interiors
Decorative
Antiques
07766 428050

maitlandwalker
Solicitors

**PRIVATE CLIENT SERVICES
FOR INDIVIDUALS**




- ◆ Will Preparation
- ◆ Estate Planning
- ◆ Lasting Powers of Attorney
- ◆ Trusts
- ◆ Tax (inheritance & capital gains tax)
- ◆ Agricultural and landed estates
- ◆ Foreign assets
- ◆ Estate Administration (probate)
- ◆ Wills, Trusts and Estate Disputes
- ◆ Deputyship applications

Together we can help you to manage your affairs
and plan for the future whatever your situation.

Tel: 01823 745 777

Email: anna.neil@maitlandwalker.com james.ashby@maitlandwalker.com
to book a free initial consultation.



**CHIMNEY
SWEEP**

NACS REGISTERED
CLEAN AND EFFICIENT
FULLY INSURED/ CERT ISSUED
COWLS AND BIRDGUARDS FITTED
WOODBURNERS REFURBISHED
POWER SWEEPING
CCTV CAMERA SURVEYING
PHONE IAN
TEL : 01984 640893
MOBILE : 07502099323

 **Need your Chimney swept or thinking of having a Log Burner fitted?**

It could be damaged or blocked with birds nests. If so it could be a fire risk and may lead to deadly Carbon Monoxide fumes leaking into your home. Now is the time to get it checked.

We cover North Devon, West Somerset, Exmoor, North Cornwall. We have full Public Liability Insurance and certificates are issued to confirm work.

The services we provide are:

- Full sweeping service to all chimneys
- including Rayburns, Agas and Stanleys
- H.E.T.A.S. registered installer of Wood and Multifuel burners.
- Service and repairs
- Gas and smoke detectors supplied and fitted
- Chimney stack repairs
- Supply and Fit all types of Cowls, Bird guards and chimney pots
- Landlord & holiday home owner solid fuel appliance safety checks issued.

    Join our online Twitter and Facebook pages to stay abreast of our services.

Call to arrange a no obligation site visit
www.phoenix-chimneys.co.uk 01271 855543 / 07956 866593

FOUR SEASONS 
 PROFESSIONAL TREE SERVICES

All Aspects of Tree Surgery
 Stump Removal
 Crown Lifting Crown Reduction
 Grounds Maintenance Grass Cutting
 Hedge Cutting All types of Fencing
 Wood Chip Seasoned Logs
 General Garden Maintenance Turfing
 Fully Insured Private & Commercial Customers
 Soft Landscaping and Planting
 Free Quotations
www.fourseasons-treeservices.com
 Oliver Vernon
info@fourseasons-treeservices.com
 01884 563021/07766168162

City & Guilds NPTC




Mike Whittaker CARPENTRY
 ESTABLISHED 1989

All aspects of Carpentry work undertaken

LOCAL & RELIABLE

Including:

- FITTED KITCHENS
- BUILT-IN WARDROBES & SHELVING
- INTERNAL & EXTERNAL DOORS
- WINDOW & DOOR FRAME REPAIRS
- REPLACEMENT WINDOWS & DOORS (TIMBER/UPVC & ALUMINIUM)
- DECKING/BALCONY CONSTRUCTION
- BESPOKE SUMMER ROOMS OR OUTBUILDINGS CONSTRUCTED
- EXTERNAL CLADDING

CALL FOR A FREE QUOTATION
 T: 01398 322872 | 07831 276750 | 07860 108345
 E: mikewhitts66@gmail.com

TONY BROOKE
 CARPETS & FLOORING

CARPET ■ VINYL ■ FLOTEX
 NATURALS ■ SAFETY FLOORING
 LVT ■ RUGS ■ RUNNERS ■
 MATS & MORE!

- Free estimating and planning
- Expert advice and fitting
- Over 25 years experience
- Home-choose service
- Re-stretching, re-adaptions and repairs
- Great deals on collect and remounts
- Already bought a carpet? We'll fit it!
- **Price Promise - we won't be beaten**



Tel: 01984 632206
 MOBILE SHOWROOM -
 WE BRING THE SAMPLES TO YOU!
 Based at Roughmoor Industrial Estate,
 Williton TA4 4RF
www.tonybrookecarpetsandflooring.co.uk

Cost of living crisis

There cannot be a single person who has not had a conversation about the cost of living crisis, which seems to be escalating at an alarming rate. We were asked the question below during the summer but it is typical of the thousands of requests we get each month asking for help and advice...

“The cost of energy and food is so high now. With the kids home from school for the summer, I’m having to pay more for lunches and snacks. I’m worried about how I’ll put food on the table. I’m on a prepayment meter and I’m really scared we’re going to be left without any gas or electric if I can’t top up. What can I do?”

As a prepayment meter customer,

your energy supplier will be able to give you temporary credit if you can’t afford to top up your meter. They might add this to your meter automatically, but if they don’t, you can call them and ask them to do this.

If you run out of temporary credit, speak to your supplier and explain your situation. They may give you extra temporary credit if you are struggling with living costs. If you’re disabled, have a long-term health condition, or you have children under five, you may also qualify to get extra credit. You’ll have to pay back anything extra you get, but you can agree how to do this in a way you can afford.

Citizens Advice Torrige, North, Mid & West Devon (CA TNMWD) are working with Devon County Council to manage an Energy Relief Scheme and it could be that you qualify for fuel vouchers. We also have a specially trained Energy Advice Team who will provide free, confidential

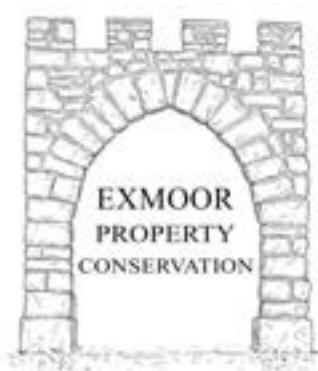
and informed advice. Visit www.ruraldevoncab.org.uk, click on ‘Get Advice’ then go to the Energy tab. Alternatively, ring our free, local AdviceLine on 0808 27 87 999. You may like to consider having a smart meter installed (at no cost to you) and this is something else our team can advise on.

There is now more government support, including a £400 payment, to help with energy bills. If you have a prepayment meter you’ll receive vouchers in the first week of each month from this October.

If you pay council tax and are in bands A-D you may have already received a payment of £150, which is being automatically credited by local councils. If you qualify but haven’t received your payment, check your council’s website to see how to claim.

You may find it useful to check out www.citizensadvice.org.uk, where you’ll find online benefits calculators to help assess whether you are eligible to claim anything. There is also advice on how to reduce living costs and other ways to increase your income.

School holidays put additional pressures on everyone’s budget. Contact your local council to see if there is extra support available to help you over holiday periods. At CA TNMWD, we can also help you get a



• Traditional and Modern Plastering
• Brickwork • Stonework • Tiling
• Painting and Decorating

Call Matthew for a
free quote on: **07508 936 551**
exmoorpropertyconservation@outlook.com
"Your property is my priority"

referral for a food bank voucher. You are by no means the only person in your situation so just reach out to us for help. www.ruraldevoncab.org.uk or 0808 27 87 999.

With so many people in situations like this turning to us each month, we need more volunteers. If you would like to help, just email recruitment@ruraldevoncab.org.uk to find out about volunteering opportunities. We give ongoing training and support and you would be helping us to meet the ever- increasing demands on our services!

**OIL BURNER SERVICE
MAINTENANCE & REPAIRS**

**PAUL JONES
EXFORD**



with over 15 years' experience
OFFERING YOU THE BEST QUALITY
OIL BURNER SERVICING AROUND

**COMPETITIVE RATES
BEST QUALITY SERVICE
ALL REPAIRS UNDERTAKEN**

**Call now on 01643 831384
or 07811 600694**



**The Support Household
Fund**

The Somerset Support Household Fund is available to provide support for vulnerable households which are struggling to afford essentials.

To apply, you must

- Live in Somerset
- Be over 16 and living independently of parents/carers
- Provide proof of identity
 - Provide a document showing your Somerset address
 - Provide proof of income (most recent bank statment)

Find out about that here: <https://www.somerset.gov.uk/.../somerset-household.../>

If you can't apply for the household support fund there is additional support to be found here: <https://www.somerset.gov.uk/.../additional-support-for.../>



Quality bespoke made to measure curtains, roman blinds and cushions.

Curtains adapted and altered to fit

Curtain poles, tracks, venetian & roller blinds

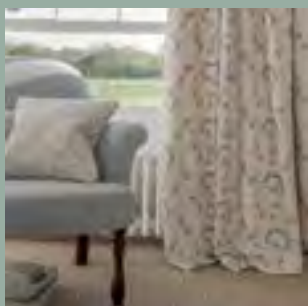
Range of fabrics available including iLiv and Clarke & Clarke

Belinda Hopkins

01398 324 053

sew_n_sew@hotmail.co.uk

www.sew-n-sew.co.uk



To apply, scan the QR code or visit bit.ly/SupportFund22

DULVERTON STARLIGHT



Dulverton will host its magical annual event on Sunday 4th December. The town is decorated with Christmas trees festooned with lights, and for one Sunday many of the shops are open for Christmas shopping. An array of Christmas market stalls will fill the streets and Town Hall. There will be festivities all afternoon and into the evening, including street entertainers and carol singing around the tree – and for 2022, fireworks will return to spread some festive cheer! Dulverton

has a wealth of independent shops, businesses, organisations, restaurants, takeaways, pubs, cafés and tea rooms – all help to make this a special place to visit, especially for Starlight.

To find out more, go to:
visitdulverton.com/dulverton-by-starlight,
facebook.com/dulvertonbystarlightx
email: dulvertonbystarlight2000@gmail.com



Remote Therapies
Beauty & Wellbeing Clinic

A beauty salon situated just 1.6 miles from the historic charter town of Bampton, on the outskirts of Shillingford. Here at Remote Therapies we offer a range of treatments to suit all.

- ~Waxing
- ~Eye Treatments
- ~Eyelash Extensions
- ~Manicures & Pedicures
- ~Spray Tanning
- ~Gel & Acrylic Nails
- ~Dermologica Skin Care
- ~Massage
- ~CryoSthetics
- ~Treatments for Men

Free onsite parking

T: 07845 925907 E: remotetherapies@gmail.com w: www.remotetherapies.co.uk

Unit 2d, Fourwinds, Shillingford, Bampton, Tiverton, Devon, EX16 9AU



The Farmers Den
Exford

**Wishes everyone
a fun filled
Christmas and a
happy New Year**

Telephone: 01643 831151
www.pickedstones.co.uk

**Army Surplus and
Equipment**

Waterproof Workwear

Hunting Apparel


**Secondhand riding
clothing and tack
(updated regularly on
line)**

Mail Order: Home Delivery:
All major credit and debit cards
accepted



AB Plumbing
Your local plumber

*All work considered
No job too small
24 hour Emergencies
Credit and Debit cards accepted*



07779 348724
*Landline 01398 351436
andyboakford@icloud.com*

A Dog's Day Out—The Times They Are A-Changein'

Hey up, that's our bed going out the front door! Keep an eye out for the sofa throws; if they go in next we're sleeping rough.

"You mean camping Buddy—you always said that's for poor people?"

Times are changing, Honey, the campsite has arrived as a go-to destination. Remember the last site we went to? She said it was more like a cross between a crèche for the kids and an adult day care centre.

"I liked it. Loads of dogs to talk to."

Too hot to play though. Good job she'd booked an air-con room in the hotel for us to sleep in. We can't be going to a hotel now; we always have a bath to smell nice and I can't remember the last time we had a bath. Can't be going camping either, it's too cold and it's dark. I know! Why didn't I think of it before? Christmas is coming! But there are no boxes of shiny paper with bows here. So what's that big crate in the fireplace, Honey? Do you think possibly, at long last, it's my quad bike from Santa?

"It's been there a long time, Buddy; the workmen are coming to install it soon, she said, and it will make us really cosy."

OK. So there must be a clue here somewhere.

"There's a shopping bag over there, with some jars of jam and chutney, and another next to it, with our dinner bowls."

We're going to a party! I love a party! Sausage rolls! This excitement is just too much, Honey. There you are—she's got our leads in her hand and she's put her best Crocs on. Yippee!

"Best behaviour please, you two; you're off to stay with your cousins tonight. I'm off to a concert and no dogs or phones allowed..."

Buddy Brown (pure Jack Russell), a roving reporter

Reference: Bob Dylan-Rough and Rowdy Ways Tour 2022



RoJo



Building & Home Improvements Ltd

JOHN FRENCH

(Plumbing and Home Improvements)

**Karslake House, Winsford,
Minehead, TA24 7JE.**

All aspects of plumbing carried out at affordable rates.

Full Bathroom and Kitchen installation service.

(Call for a free estimate)

**No job too small.
Tel: 01643 851215**



ROSEMARY TREE

garden design consultancy

Breathe new life into your outdoor space or holiday let garden. With planting plans and tailored garden consultations, take the guesswork out of transforming your garden.

✉ rosie@rosemarytree.co.uk

☎ 07506673242 or 01398 341855

📷 [rosieclairretharne](https://www.instagram.com/rosieclairretharne)

www.rosemarytree.co.uk



Haddeo Firewood

Kiln dried oak firewood	£85
Seasoned oak firewood	£62
per large dumpy bag (0.72m ³)	

Bickham, Timberscombe, TA24 7UA

Delivery can be arranged.

BERNARD DRU 07920 516225

email: bernard.dru@oakfloor.co.uk

More Than Just A Walk

**Bespoke Dog Walking and
House Sitting Service**

Fully Insured

Clair Weaver 07774 673314
clairweaver16@gmail.com





Travels from Dulverton: chapter 2

“Life is what happens when you’re busy making other plans.” Despite all the will in the world, we have had to diversify. After making it as far as Dollar, enjoying the salt-rich, fatty pickings of Scottish cuisine, the glory of Loch Lomond, Garelochhead and Megget Reservoir but, with bookings a bit quiet, we decided to return to Dulverton.

Plan B: to split our time between cottage and van as and when we have bookings, get some regular employment, and adventure at the weekends. The Highlands and North Coast 500, our next great adventure, will have to wait.

Plan B in place we began our descent, returning south. Taking the west coast, we swam in the Irish Sea at St Bees. Whizzed through Morecambe at the start of the second heatwave, a death-defying dash across a weak bridge, and dramatic ascent across Millom to Thwaites, with Sellafield in our rear view. We met a steam traction enthusiast and his wife at the Malt Shovel pub in Warton. Ironbridge, home of the world’s first iron bridge, and stayed one night in the beautifully magical Hundred House Hotel in Telford, before a hot five-hour motorway run back home to the glorious Barle Valley.

It’s been a brilliant summer; not the year-long adventure as hoped but we have certainly covered some ground. In the spirit of adventure, this write-up will still be called *Travels from Dulverton*, although adventures will cover the south for now.

Notable in every city, town, village, and beauty spot we have visited on our travels are the monuments of remembrance. Benches dedicated to loved ones, trees planted, flowers left, the unsung hero stood mournfully in the shadows, poppies, wreaths, teddy bears, and now—marmalade sandwiches. Heartfelt reminiscences and wishes, “Lest we forget.” Now,

more than ever, people look to remember and celebrate that which once gave us joy. Happy times, loving words and gestures, goodwill, best intentions, and appreciation of our idiosyncrasies that amuse and infuriate; things don’t change that much and, luckily for us, good vibes don’t cost a penny! (At the time of writing, bookings are up, jobs secured, and we’ve just had an epic weekend in North Devon: the Grampus Inn, Lee, for a live music and open mic Friday night, followed by a cliff-top park up in a farmer’s field between Sandymouth and Bude) The adventure continues...

Mary Ford

Photos: Mathew Ford



THE LOCAL DIRECTORY

PARISH AND TOWN COUNCILS

Bampton T.C.: Clerk: Penny Clapham	clerk@bamptontowncouncil.gov.uk	01647 253066
Brompton Regis P.C.: S Buchanan	brpcclerk@gmail.com	01984 641706
Brushford P.C.: Clerk: Jan Aldridge	clerk@brushfordparishcouncil.org.uk	
Cutcombe P.C.: Clerk: Liz Stitt	cutcombeclerk@gmail.com	07919 001801
Dulverton T.C.: Sec: Miss A. Rose	clerk@dulvertontowncouncil.co.uk	01398 324561
East Anstey P.C.: Clerk: Mrs Jill Larcombe	eastansteypc@yahoo.co.uk	01884 252647
Exford P.C.: Clerk: Jennifer Yates	clerk@exfordparishcouncil.org	07919 001801
Exmoor P.C.: Clerk: Rebecca Tomalin	exmoorparishcouncil@gmail.com	01643 831638
Exton P.C.: Clerk: Andrew Moore	clerk@extonparishcouncil.co.uk	01984 641539
Oakford Parish Council: Chair: Mr Geoff Baylis	cllr.GBaylis.OakfordPC@gmail.com	00398 351266
Upton P.C.: Clerk: Mrs P Purvis	uptonparishclerk@hotmail.co.uk	01398 371548
Winsford P.C.: Clerk: Jennifer Yates	winsfordparishcouncil@gmail.com	07919 001801
Withypool & Hawkridge P.C.: Clerk: Rebecca Tomalin	withypoolhawkridgeparishclerk@gmail.com	01643 831638
Wiveliscombe T.C.: Clerk: Sarah Towells	townclerk@wiveliscombe.com	01984 631914

LOCAL CHURCHES AND CHAPEL CONTACT NUMBERS

All Saints Church, Dulverton: Revd Dowell Conning	revdconning@gmail.com	01398 322867
Dulverton Benefice/All Saints/Community choirs: Gary Cooper		07419 212354
All Saints Church, Dulverton, Bell Tower: Anne Markwick		01398 323823
Brushford: Revd Dowell Conning	revdconning@gmail.com	01398 322867
Exmoor Benefice: The Rev. David Weir, The Rectory, Exford, TA24 7LX		01643 831330
Catholic Church: Priest: Father Michael		01643 702201
Dulverton Congregational Church: Chapel Street: Mr P Donnelly		01398 324010
The Traditional Anglican Church: Loxbeare, Priest Reverend Aird		01769 581042
Exmoor Benefice Choir: Mrs B. Staples		01643 851396
St Peter's Church Oakford: Rev'd Stephanie Gordon-Jeffs	office@exevalleymissioncommunity.org	01884 250417

ARTS

The Arts Society Exmoor: Mrs Penny Pulver (Chair)	www.theartsocietyexmoor.oreg.uk	01398 331007
Dulverton Art Group: Sec: Mrs G Rose, 2 Stable Mews, The Square, Witheridge		01884 860495
Dulverton Camera Club: Sec: Peter Main, 4 Valley View, Morebath, Tiverton, EX16		01398 331556
Dulverton Players: Chair: Les Silverlock		01398 341850
Oakford Players, Chair: Chair Mr Tony Holmes	tholmes556@btinternet.com	01398 351665

SPORTS CLUBS

Anstey Short Mat Bowls: Chris Dale		01398 341615
Bridgetown Cricket: Sec: Mr. D. Sherring, Mid-Wicket, Bridgetown, Dulverton TA22 9JN	administrator@bridgetowncc.co.uk	
Brushford Short Mat Bowling: Sec: Sam Takle		01398 324147
Cutcombe Cricket: Sec: Mrs Maria Adams, 1 The Beeches, Wheddon Cross		01643 841036
Dulverton Angling Assn: c/o Pat Veale, 9 High St., Dulverton, TA22 9HB		01398 323409
Dulverton Badminton Club: Sec Judy Smith		01398 324353
Dulverton Cricket Club: Carl Hooper	dulvertoncricketclub1858@gmail.com	07866 256769/01398 324494
Dulverton Cricket Club, Colts: Mrs Christine Dubery		01398 323474
Dulverton & District Tennis Club: Hazel Richardson	hazelr@btinternet.com	07889793571
Dulverton & Exmoor Squash Club: Membership Sec: Chris Winter	chriswin@aol.com	07710 046107

Dulverton Jnr. F.C: Sec: Mrs Christine Dubery	01398 323474
Dulverton Netball Club: Sec Lindsay Smith, 25, Nicholas Close, Brushford	01398 323834
Dulverton Snooker: Sec: Mr. D. Bodger, 39 Fishers Mead, Dulverton, TA22 9EN	01398 323899
Dulverton Sports and Social: Chair: Carl Hooper	01398 324494
Dulverton Sportsfield Management: Adrian Smith	01398 323834
Dulverton Senior Table Tennis: Richard Archer	01398 324160
Dulverton Town F.C: Sec: Mr. J. Atkins, 1 Exebridge, Dulverton. TA22 9AY	01398 323787
Exmoor Croquet Club: Chair: Connie Heywood	01398 341556
Moorland Hall Sports:	info@wheddoncross.org.uk
Wimbleball Fly Fishers:	enquiries@fishingthewest.co.uk
PRE-SCHOOL GROUPS		
All Saints School & Nursery:	01398 323231 & 01398 323223
Anstey Parent and Toddlers Group: E A School	01398 341369
Little Owls Nursery at All Saints C of E School, Dulverton	01398 324360
SCHOOLS		
All Saints C of E School: Fishers Mead TA22 9EN	01398 323231
Brompton Regis Toddlers: Mrs.S. Julian, Court Place Farm, Skilgate	01398 331031
Cutcombe C of E First School: Wheddon Cross, TA24 7DZ	01643 841462
Dulverton Junior School: Barns Close West, TA22 9EE	01398 323223
Dulverton Children's Centre: All Saints School, Fishers Mead TA22 9EN	01398 324360
Dulverton Family and Toddlers Group:	01398 324329
Dunkery PreSchool: Supervisor: Mrs. S. Matravers, Shute Close, Cutcombe, Minehead	01643 841008
East Anstey Primary School: East Anstey, Tiverton, Devon, EX16 9JP	01398 341369
Exford CofE VC First School:	01643 831365
Little Berries Pre School at Exford First School	01643 831365
Little Owls Nursery: All Saints School, Fishers Mead TA22 9EN	01398 324360
WOMEN'S ORGANISATIONS		
Anstey W.I.: Karen	01398 341106
Bampton Ladies Group. Mrs. Diane Holland	01398 332755
Bampton Patchwork and Quilting Group. Mrs. Diane Holland	01398 332755
Cutcombe & District M.U.: President, Pam Anson	01643 851616
Cutcombe & District W.I.: Mrs. Pam Anson	01643 851616
Dulverton & Brushford M.U.: Mrs A. Gregory, 22 Jury Road, Dulverton, TA22 9DU	01398 323587
Exford Moorhens: Chairman: Mrs. I. Collett	01643 831016
Oakford Moorland Ladies Club: Chair: Mrs Jennie Chappell	smilerjenniec@hotmail.com 01398 351666
YOUTH ORGANISATIONS AND ACTIVITIES		
Bampton Scouts/Cubs/Beaver748s: Tony Weiss	01398 331901
Dulverton & District Young People's Project: Chair: John Preston	01398 323862
Dulverton Ballet: Mrs Wightmore, Flat 3, Easter House, St. Andrews St. Tiverton	01884 253999
Exmoor Community Youth Club: Organiser Laura Tasker, Fridays 6 – 8 pm	1643 831125
OTHERS		
Abbeyfield House	01398 324136
Bampton Heritage and Visitor Centre (inside St Michael and All Angels Church, Bampton)	www.bamptonheritage.org.uk or bamptonheritage@btinternet.com
Bampton Library and Resource Centre, Station Road	01398 332466
Brushford Parish Hall: Bookings enquiries@brushfordparishhall.org.uk	07941 139846

If you see something that needs changing in the directory – please do let us know.

Email exmoornews@gmail.com



Brushford Luncheon Club: Treasurer: Margaret Albery	01398 324587
Care Direct for help and advice: www.somerset.gov.uk	0300 1232224
Cutcombe Flower & Produce Show: Tracy Beviss	01643 841257
Dulverton Action Group: Magdalena Harding	01398 323 785
Dulverton & District Civic Soc: Kathy Currie.....	07493 518350
Dulverton & Southern Exmoor Twinning: Chair: Steve Ford, Dulverton	01398 323016
Dulverton Bridge Club: Sec. Brian Hughes	www.Bridgewebs.com/dulverton
Dulverton Dance:	01398 341850
Dulverton Ballroom Dance: Sec: Mrs Christine Dubery	01398 323474
Dulverton Development Forum: Sec: Mrs J. Ross	01398 323818
Dulverton Films: Jan Ross	01398 323818
Dulverton Fellowship for Mental Health: Marion Silverlock	01398 341850
Dulverton Gardening Club: Roger Hammond	01398 323954
Dulverton Group Exmoor Society: Sec: Dr Ken Mills	01398 331482
Dulverton Vets	01398 323285
Dulverton Vintage Films: Magdalena Harding	01398 323785
Dulverton Voluntary Drivers: Mike Beale	07743 885115
Exe Valley Market Bus: Jennie Chappell	smilerjenniec@hotmail.com
Exmoor Patient Group: Chair: Sandra Wilson, W Nightcott, Dulverton TA22 9RT	01398 324687
Exmoor BeeKeepers Association: Sec: Caroline Ralph	exmoorhoneyshow@gmail.com
Exmoor Community Bus Assn:	07925 044 262
Exmoor National Park Centre	01398 323841
Exmoor Pony Centre: Ashwick, Dulverton, Somerset, TA22 9QE	01398 323093
Exmoor Pony Society: Sec: Mrs Jay Gee, Little Ash Farm Cottage, Ash Lane, Withypool, TA24 7RR	01643 851777
Exmoor Rotary Club: Humphrey Berridge (PRO), Station Hse, Luke St, Bampton	01398 332324
Exmoor U3A: David Newth	01398 324615
Good Neighbours:	07395 171409
Oakford Village Hall: Bookings: Mrs Dawn Williams	dawnwilliams1@gmail.com
Royal British Legion Dulverton: Peter Donnelly	01398 323030
TA22 Voluntary Lift Scheme (formerly Brushford Voluntary Lifts): Chair: T. Wilson	07528 326880
Tiverton Model Aero Club: Sec: Mr. P Veale, 9 High St., Dulverton TA22 9HB	01398 323409
Village Agent Jane Lillis	janel@somersetcc.org.uk
Voices of Exmoor Amanda Taylor	01598 428005
West Somerset Advice Bureau:	01643 704624



Ele Davidson

Painter & Decorator
North Devon Area

07775 600298

eledav1@btinternet.com



painterdecoratorcommissions



We welcome your community information. You can be added to our contributors' email list asking for copy (we send a reminder email prior to deadlines). Just email us to be added.
exmoornews@gmail.com

JANE PENFOLD

Equine Bodywork
The Masterson Method®
Massage
Myofascial Release
Saddle Fitting Advice



www.flexiblehorse.co.uk
07711 130371
jane@flexiblehorse.co.uk



**Maintaining the
building heritage
of Exmoor**



**EXMOOR
BUILDERS**

CONSTRUCTION + DESIGN

t 01398 324 669

m 07831 252 276

e info@exmoorbuilders.co.uk

w www.exmoorbuilders.co.uk

We are a UK syndicate looking to expand our interests in acquiring Sporting Rights on Estate or Farm land within Somerset, Devon and Dorset.

If you are interested in earning an annual fee for the lease of these rights please contact
- Robert Glynn on 07795-214934 or email
tarpon450lb@yahoo.co.uk to discuss.

**Lance Nicholson
Country Pursuits**



9 High Street, Dulverton
01398 323409

Shotguns, rifles,
ammunition, clays etc.
All your game fishing needs
plus details of the
Dulverton Angling Association.
Large range of Barbour clothing.

www.lance-nicholson.co.uk



Tel: 01884 257808

- **NEW BUILDS**
- **EXTENSIONS**
- **RENOVATIONS**
- **LOFT CONVERSIONS**

Jimsam View, Canal Hill, Tiverton, Devon EX16 4JE

Tel: 01884 257808

Mobile: 07977 993526

Email: nick6692@sky.com

