

May
June
2023

EXMOOR NEWS



Bringing community news across southern Exmoor since 1985

FREE

Bampton
Bridgetown
Brompton Regis
Brushford
Bury
Cutcombe
Dulverton
East Anstey
Exebridge
Exford
Exton
Hawkridge
Luxborough
Molland
Morebath
Oakford
Simonsbath
Skilgate
Upton
West Anstey
Wheddon Cross
Winsford
Withiel Florey
Withypool
Wiveliscombe
Wootton Courtenay

Exmoor Landscaping



Local and reliable

Clearance and ground works

Stonewalling and steps

Patios and ponds

Fencing and treework

Turf supplied and laid



Tel: 01984 640530
or Mobile: 07974 141790
or visit www.exmoorlandscaping.co.uk

Larchwood Cattery
EX16 9JL

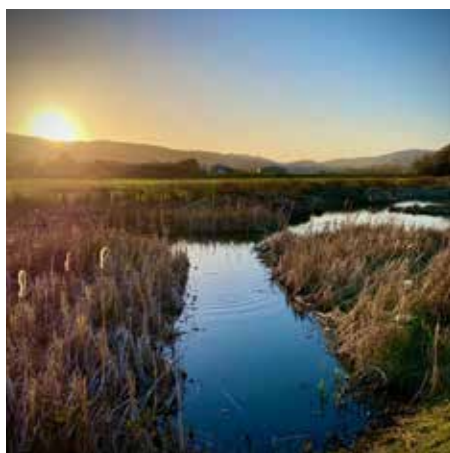


Purpose built
Individual heated chalets
Spacious outdoor runs

Tel: 07598813621

Email: info@larchwoodcattery.co.uk

www.larchwoodcattery.co.uk



Cover image 2023: © John Pilley
Dunster Beach

If you'd like to see your photo on the cover, send us a low resolution image and if we can use it, we'll ask for a high resolution version.

TONGDAM
Thai Restaurant

NEW OPENING TIMES
OPEN 5 EVENINGS
LUNCH SATURDAY & SUNDAY ONLY
CLOSED TUESDAY & WEDNESDAY

26 High Street | Dulverton | Somerset | TA22 9DJ
01398 323 397 for reservations

www.tongdam.com

The image shows the interior of the Tongdam Thai Restaurant. It features wooden tables and chairs, and a large window with a view of the outside. The restaurant has a traditional Thai aesthetic with wooden paneling and decorative elements. The logo for the restaurant is in the top left corner, featuring a stylized figure holding a megaphone.



EXMOOR NEWS

COVERING SOUTHERN EXMOOR



The deadline for the July/August '23 issue of the Exmoor News is

Thursday 1st June 2023

Printed by Brightsea, Exeter



Hello

Summer is approaching, bringing new beginnings. In light of this, we extend our best wishes to King Charles III at his coronation on 6 May, 2023. The government has confirmed that 8 May will be a bank holiday, and you can find additional information about the celebrations on pages 5 and 6.



Many exciting festivities are on the horizon as well, including the Dunster Festival (see page 3), the Simonsbath Festival (page 4), and the National Garden Scheme (pages 10 and 11). Don't miss the chance to explore the charming Duverton Secret Gardens on 2 July and check out the exciting Dulverton events scheduled for 2023 - featured on page 14.

Our mission statement is to inform, engage and connect our community, so if you have a group, event or activity, please let us know and we will put it in here and share on our social media platforms.

Best wishes, Ceri Keene and Claire Savill

E: exmoornews@gmail.com T: 07497 914441 W: www.exmoornews.co.uk

Post: The Old Stores, Brushford, Dulverton, Somerset, TA22 9AH

We take our responsibility to maintain high editorial standards seriously.

Should an error occur please do not hesitate to contact us.

Exmoor News Rate Card 2023

Size 1
60wide x 92high
Mono £20
Colour £28



Size 3
60w mm X 188h
Colour £55

Size 4
188w x 92h
Colour £83

Size 5
124w x 188h mm
Colour £122

Size 6
190mm x 190 mm (no bleed)
216 mm x 216 mm (includes bleed)
Colour £165

Size 2
124w x 92h mm
Mono £40
Colour £55

*Bleed is when the printed image goes over the edge of the cut page.

The Exmoor News page size is 210x210mm, we ask for 4mm of bleed. The image can be larger than the full page ad size but don't go too near the edge, allow approx 5mm.

Whilst every effort is made to ensure the accuracy of the information in this magazine, no liability can be accepted by the editors and publishers for any loss, damage or injury caused by errors in, or omissions from, the information given. Please also note that in the publication of trade adverts, the editors do not guarantee the quality of services provided by any of these advertisers. The editors reserve the right to decline to publish any item and to amend or shorten material. Opinions expressed are not necessarily those of the publisher/editor. All advert bookings are subject to our terms and conditions see www.exmoornews.co.uk/terms.

Advertising rates may be subject to change.

Under the Data Protection Act, we have a legal duty to protect any information we collect from you. We take appropriate security measures to safeguard your data and apply security standards and controls to prevent any unauthorised access to it.

Dulverton Farmers Market



10.00 - 14.30
Last Saturday of
the month
April - September



Lion Car Park
Dulverton
TA22 9HB



www.dulvertonfarmersmarket.co.uk

Tel: 01398 323474



Find us on
Facebook



Follow us on
Twitter



You must visit ...

**DULVERTON
HERITAGE CENTRE**
Situated behind Dulverton Library and
the Exmoor National Park Centre



FREE admission

Visit the new exhibition
"Bringing Dulverton's Past to Life".
Other rooms to visit include "Granny Baker's
Kitchen", a display that recreates domestic
life from the turn of the 20th century.
Visit the working scale model of
Dulverton Station as it was circa 1935
OPEN April to October.
www.dulvertonheritagecentre.gov.uk

PLANT SALE

IN THE TOWN HALL,
DULVERTON

SATURDAY 10TH JUNE

10.00am – 1.00pm

REFRESHMENTS WILL BE AVAILABLE

DULVERTON GARDENING CLUB



18th May -Talk, Gill Hazel

"So you think you know Gladiolus" + "Hedgehogs in your Garden"



15th June-Talk, Laura Batt

7.00pm for 7.30pm

At Dulverton Town Hall

DUNSTER FESTIVAL

The festival returns this year for the late May bank holiday weekend (27-29 May), bringing a range of performances from established classics and old favourites to a late-night Syrian zither concert.

The festival, which was first held in 2018, begins on Saturday 27 May with a teatime concert in the Tithe Barn, featuring harpist Rachel Wick, and soprano Emma Brain-Gabbott—with traditional cream tea included. The award-winning vocal ensemble the Marian Consort returns to the Priory Church of St George at 7pm with *Singing in Secret*, a programme exploring clandestine Renaissance musical masterpieces, alongside works by contemporary British composers.



1. Teatime Concert (R Wick, photo: Kaupo Kikkas)

The musical smorgasbord continues at 10pm, when globally renowned Syrian composer and

instrumentalist, Maya Youssef, hailed as 'the queen of the qanun' (a 78-stringed plucked zither), performs in a candlelit recital in the Tithe Barn.

Back at St George's on Sunday, the Marian Consort will join worshippers for an 11am Festival Service, followed by a choral workshop in the Tithe Barn. The festival concerts conclude back at the church at 7.30pm, with the Carducci Quartet.

In tandem, the musicians will once again hold workshops at local schools and care homes. Since the festival began five years ago, its musicians have worked with over 3,000 children in Minehead and the local area. An exhibition by local Middle School students, who will work with Dunster Festival musicians to create video animations inspired by the music of female composers, will be held at East Quay, Watchet, in May and June.

Tickets and further information can be found at www.dunsterfestival.co.uk



2. Opening Night Concert (Marian Consort, photo: Nick Rutter)



3. Late night concert, Maya Youssef



5. Choral Workshop (Rory McCleery, photo: Helena Cooke)



6. Closing Concert, Carducci Quartet

Simonsbath Festival

Celebrating **Music, Art, Talks & Walks** on Exmoor from **May Day to Midsummer**

With another diverse array of performers and speakers to tempt you, the Simonsbath Festival is here once again, inviting guests to take full advantage of the concerts, talks and Exmoor-related activities. What started as an inspiration to help regenerate St Luke's church in Simonsbath, the festival has now been running successfully each year, to bring you more than a month's worth of entertainment.

In its twelfth year, apart from "the Covid years", the eclectic range of events is something that other festivals may only aspire to, particularly given that it is hosted almost entirely in our little church.

This will be our first year without Robin Ashburner; many will remember him as a larger than life character but the festival is grateful that he was a part of it from its inception, and that he was one of the speakers last year, educating us on flags and standards.

This year's programme begins on 11 May with a trip to All Saints Church in Dulverton to hear the talented Tamsin Waley-Cohen and George Fu play classical music inspired by folk music.

We include a church service in our calendar and this year it will be held on Saturday 21 May in St Luke's for a service of "reflection, poetry and music". We are fortunate this year to be joined by a musician of the future perhaps, Somerset Young Musician winner, Anthony Knight.

Whether you are local or coming from afar, Simonsbath Festival welcomes you. Precede the evening with a meal and drink in the village, or even a trek to Cow Castle and back to revitalise you, in readiness for the music or talk to come. Always remember, however, to bring a cushion; the pews are not for the fainthearted!

Event

Date/time

Tamsin Waley-Cohen & George Fu	11 May, 7.30pm
Exmoor Society Walk: Ilkerton	14 May, 11am
Helen Wilson: author	16 May, 7.30pm
Exmoor Society Spring Conference	19 May, 9.30am
Amarylli: <i>Cupid's Lament</i>	20 May, 7.30pm
Simonsbath Festival Church Service	21 May, 11am
Exmoor Society Walk: Woody Bay	22 May, 10am
Gerald Cadogan: <i>The Minoan Distance</i>	24 May, 7.30pm
Exmoor Society Walk: Porlock	25 May, 10.00am
Rupert Egerton-Smith: pianist	27 May, 7.30pm
Dominic Riley & Michael Burke: <i>Lost Books</i>	30 May, 7.30pm
Towns & Chatters: <i>At the drop of a Hat!</i>	3 June, 7.30pm
Robin Morrison: wildlife photographer	7 June, 7.30pm
David Jaggs: classical guitarist	10 June, 7.30pm
Exmoor Society Walk: Ley Hill	14 June, 10.30am
Jeremy Holtom: <i>Porlock Bishop mystery</i>	14 June, 7.30pm
Exmoor Society Walk: Hawcombe	16 June, 1.00pm
Charles Court Opera: <i>Express G&S</i>	17 June, 7.30pm
Exmoor Society Walk: Hope Bourne	22 June, 10.00am
Midsummer Family & Community Concert	23 June, 2.00pm
Exmoor Running & Walking Festival	23-25 June



Event Calendar

There is a diverse range of events at the Simonsbath Festival. Visit our Festival Events page to find out more!

[FIND OUT MORE >](#)



The Festival

Simonsbath Festival is a non-profit making community venture which celebrates the cultural heritage of Exmoor.

[FIND OUT MORE >](#)



FAQ

Got a question? Here are answers to a few questions often asked by Simonsbath Festival visitors.

[FIND OUT MORE >](#)



Become a Friend

Simonsbath Festival is a non-profit making community venture. We welcome your support by inviting you to become a Friend!

[FIND OUT MORE >](#)

www.simonsbathfestival.org.uk

Celebrating the King's Coronation

On the **"BIG LUNCH"** Sunday
Village Green 7th May 2023

— THE —
**EXMOOR
WHITE
HORSE INN**

01643★831229

— THE —
CROWN HOTEL

01643★831554

— THE —
**WHITE HORSE
LIVERY
YARD**

07791★677050

— THE —
FARMERS DEN

01643★831151

EXFORD

The **HEART OF EXMOOR**

— THE —
EXMOOR STORES

01643★831244

**EXFORD
SERVICE STATION**

— LTD —
01643★831606

**EXFORD BRIDGE
TEA ROOMS**

01643★831304

**COURT FARM
HOLIDAY COTTAGES**

01643★831207

An unwanted Royal retirement

They once compared me to a golden ray -
the Royal Coach that glorified the day!

I drive behind the Household Cavalry
at coronations and the Jubilee.

I hear spectators shout "A flash of gold"
as I roll past, and histories unfold.

But days of pomp and circumstance are
past

the Platinum Pageant proved to be my
last.

With seats so hard and wheels from iron
ground

which pads and springs and cushions
can't confound;

once chosen, I'm the Golden Coach no
longer

a new is built, for comfort, and much
stronger.

I'm pensioned off and wondering what
to do

Perhaps an Ad. *'Works hard. As good as
new.'*

©Fran Bridger

BRUSHFORD PARISH HALL



Sunday 7th May
Watch the Concert on
the BIG Screen
PopUp Bar open 18:30
Bring a Picnic

BBC Concert time to be confirmed so please check
<https://brushfordparishhall.org.uk/>
for further details as they are released.

Dulverton Town Hall
will be screening

the coronation

LIVE



6th May 2023

Join us and your neighbours
to watch this historic event
on our giant cinema screen
the bar will be open
entry is free



May and June events—something for everyone!

- Tuesday 2 May —7.30pm film: *Allelujah* (Cert 12A)
Saturday 6 May —7.30pm Betty Legs Diamond—first UK tour!
Saturday 13 May —11.00am morning film matinee: *Half a Sixpence* (1967)
Tuesday 23 May —7.30pm *Tokyo Stories*—exhibition on screen
Wednesday 24 May —7.15pm—*The Sleeping Beauty*—Royal Ballet live screening from the Royal Opera House
Friday 26 May —7.30pm King Pleasure & The Biscuit Boys
Saturday 3 June —7.30pm dS:UK...in *Tribute to Dire Straits*— *ON anoTHEr NIGHT* tour (ON ANOTHER NIGHT)
Thursday 8 June —Saturday 10 June 7.30pm *Aladdin the Musical*, presented by Waterfront Theatre
Saturday 10 June —11.00am morning film matinee: *Calamity Jane* (1953 Cert U)
Tuesday 13 June —7.15pm *Il Trovatore* - Royal Opera live screening from the Royal Opera House
Saturday 24 June —2.00pm *Top Secret - The Magic Of Science*....how did they do that?

For more details, including ticket prices, call the Box Office on 01643 706430 or visit: www.regaltheatre.co.uk

The Queen's Theatre Barnstaple
on Tuesday 11th July - Saturday
15th July

QUEEN'S
THEATRE

BARNSTAPLE



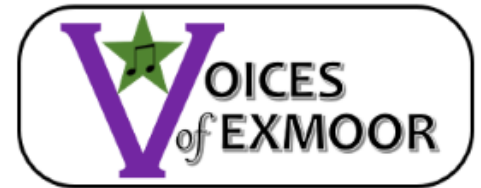
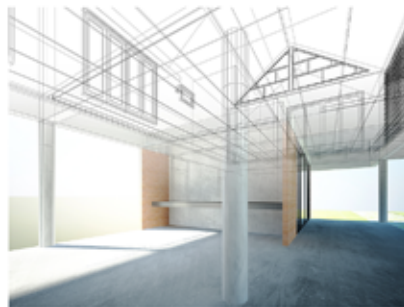
Architectural design
planning applications
technical drawings
building refurbishment design
building reconfiguration
residential design, extensions & new build
change of use design & planning
listed buildings
conservation areas
feasibility studies
surveys



design@thelandusecompany
Architectural design service

contact:

simon booth
oakdene, blue anchor, minehead
somerset, TA24 6JZ
tel: 07377 789066
email: design@thelandusecompany.co.uk



Voices of Exmoor return to Dulverton

We will be presenting *Something Old, Something New* at our next concert to be held in Dulverton Town Hall at 7.30 pm on Friday 26 May 2023. The programme will include a mixture of old favourites and new pieces. Tickets at £10 will be available from 1 May from The Tantivy in Dulverton, online through our website at www.voicesofexmoor.co.uk, through Facebook at www.facebook.com/voicesofexmoor or simply email voetickets@gmail.com.

This year, Voices of Exmoor will continue to support the Calvert Trust, North Devon Hospice and St Margaret's Hospice.





Dulverton Town Hall

Friday 5 May

EMPIRE OF LIGHT (Cert 15)

Director: Sam Mendes

115 mins

Set in an English seaside town in the early 1980s, *Empire of Light* is a powerful and poignant story about human connection and the magic of cinema, from award-winning director, Sam Mendes. Olivia Colman provides a stunning, subtle portrait of the cinema's duty manager, who is struggling with her health and forms a relationship with a new employee. The film shows the power of human connection during turbulent times. Also stars Michael Ward, Colin Firth and Toby Jones.

Friday 19 May

A MAN CALLED OTTO (Cert 15)

Director: Marc Forster

120 mins

Grumpy widower Otto (Tom Hanks) is the kind of man who points at people he dislikes, as if they were burglars caught outside his bedroom window. He has staunch principles, strict routines and a short fuse. People call him "the bitter neighbour from hell" but when a lively young family moves in next door, he meets his match in a quick-witted, pregnant woman, leading to an unlikely friendship that turns his world upside down.

Friday 2 June

ROALD DAHL'S MATILDA THE MUSICAL (Cert PG)

Director: Marc Foster

117 mins

Matilda Wormwood (Alisha Weir) is a little girl with big curiosity, a sharp mind and a vivid imagination but has the worst parents in the world. While her parents content themselves with trashy TV and dodgy money-making schemes, she loves to lose herself in the pages of her beloved books. On meeting her inspirational teacher, Miss Honey, Matilda is encouraged and begins conjuring her own fantastical tales. Excited to attend Crunchem Hall, she is surprised to find the school an ominous and oppressive place led by the huge and villainous Miss Trunchbull (Emma Thompson). Filled with an overwhelming sense of justice, she dares to take a stand for what is right and teach Trunchbull a lesson she won't forget. An inspirational musical tale of an extraordinary girl, who discovers her superpower and summons the remarkable courage, against all odds, to help others change their stories. Adapted from the Royal Shakespeare Company's production for the big screen, with original music and lyrics by Tim Minchin.

Friday 23 June

LIVING (Cert 12A)

Director: Oliver Hermanus

102 mins

Williams (Bill Nighy), a council bureaucrat, is overwhelmed at work and lonely at home but his life takes a heartbreaking turn when a medical diagnosis tells him his time is short. Influenced by a local decadent and a vibrant woman, he continues to search for meaning, until a simple revelation gives him a purpose to create a legacy for the next generation.

Tickets: Dulverton Films members £3, non-members £4.50, students, accompanied by an adult, £2.50. Book in advance at Dulverton Post Office (tel: 01398 323474) or email janaross2003@yahoo.co.uk. Bar open from 7pm.

Blippi is back in the UK!

Following the success of the 2023 Olivier Award nominated UK debut show, *Blippi: The Musical*, Round Room Live and Moonbug Entertainment with Carter Dixon McGill Productions are proud to announce that a new live show, *Blippi: The Wonderful World Tour*, sees the return of the vivacious, energetic, and educational antics of global sensation, Blippi, to stages across the UK. After opening in Scotland on 8 July, the production moves to England, where the first port of call is Queen's Theatre, Barnstable, from 18-22 July.

Stephen Shaw, founder and co-president of Round Room Live, said today: "With brand new music, characters, and even the Blippi-Mobile, we're thrilled to bring Blippi to more kids and families around the UK in a brand new show. We're excited for audiences to create memorable Blippi experiences, with the amazing music, production, and energy they expect, but in a way they've never seen before."

Susan Vargo, Head of Live Events at Moonbug Entertainment, added: "It's very special to witness the love that our fans have for Blippi and his buddies, and the joy this beloved character brings to families around the world. Our live experiences bring families together to make memories that will last a lifetime. With *Blippi: The Wonderful World Tour*, fans can expect catchy music, lots of dancing and a whole lot of fun!"

Blippi, along with his best friend Meekah, inspires curiosity in preschoolers around the world by creating content and



experiences that are relatable, accessible and make learning fun. It has become a worldwide sensation with more than one billion monthly views on YouTube and more than 60 million fans around the world. It is also available in more than 20 languages, including ASL, and is distributed by more than 30 global broadcast and streaming partners around the world including Netflix, Hulu, Amazon Prime, Roku, Virgin Media and Kidoodle. Meekah, Blippi's creative, inventive, cart-wheel-loving pal, stars alongside Blippi in *Blippi's Treehouse* on Amazon and she also has her own YouTube channel.

Tickets for *Blippi: The Wonderful World Tour* are on sale now. For tickets and additional information, visit www.blippiontour.com

Follow Blippi On Tour: Fans can visit www.BlippiOnTour.com for tour dates and ticket information and follow Blippi On Tour social media for exclusive tour content.

Official Website: www.BlippiOnTour.com

Facebook/Twitter/ Instagram: @BlippiOnTour

Follow Blippi: Official website: www.Blippi.com YouTube/ Facebook: @Blippi Twitter/Instagram: @BlippiOfficial

This year's Pleasure Dome plays

This spring, Pleasure Dome Theatre, in partnership with the National Trust, toured venues across Exmoor and surrounding areas with *Rosalie*, a new one-woman play, inspired by Rosalie Chichester, the last resident of Arlington Court in North Devon. Rosalie, who lived from 1865-1949 was a scientist, photographer, explorer, collector, and unapologetic eccentric and the play explores the pressures of female identity and familial responsibility in Victorian England.

Audiences warmed to this little-known story—an exploration of the complicated relationship between an extraordinary place and an extraordinary person. If you missed *Rosalie*, you might still be able to book tickets for the final performance at Taunton Brewhouse on 5 May. For details and tickets go to: www.tauntonbrewhouse.co.uk/events/rosalie/

You can also hear a recent BBC Radio Devon interview with Pleasure Dome's Creative Director, Helena Payne, about the project; available on BBC Sounds at: www.bbc.co.uk/programmes/p0f62nlh

This summer, the Pleasure Dome Theatre Company returns to its home in the Valley of Rocks with a new adaptation of *Treasure Island*. At Christmas, the company will be at Taunton Brewhouse, with a new production of Charles Dickens's classic *A Christmas Carol*.

"A perfect evening with superb entertainment. Very imaginative. Wonderful setting used to total excellence." Audience member 2019

www.pleasuredometheatrecompany.com/





National Garden Scheme Yellow Book Open Gardens

With spring well under way, many private gardens are opening to welcome visitors in the coming months, with refreshments and plants for sale at many of them, and dogs on leads allowed at some. A look around a beautiful garden, a cup of tea and cake, and the proceeds going to help great nursing charities—what could be better? Originally set up in 1927 to support district nurses, the National Garden Scheme (NGS) now raises millions of pounds for nursing and health charities each year from the garden entrances. It also supports charities doing amazing work in gardens and health, grants bursaries to help community gardening projects, and supports gardeners at the start of their career.

Last year saw a return to near normality for garden opening and visiting for the first time in three years and despite a prolonged drought last summer that led many gardens to close, the NGS raised donations totalling £3.11 million to its beneficiary charities.

These are some gardens opening in our area in May and June. For full details pick up an *NGS Yellow Book*, available in local shops and tourist information centres, or go online to the website at www.ngs.org:

- No 1** 20-21 May Bradford Tracey House, Witheridge, Tiverton, Devon, EX16 8QG
- No 2** 20-21 May The Old Vicarage, West Anstey, South Molton, Devon, EX36 3PE
- No 3** 21 May Chevithorne Barton, Chevithorne, Tiverton, Devon, EX16 7QB
- No 4** 27-28 May Brendon Gardens, Brendon, Lynton, Devon, EX35 6PU
- No 5** 11 June Nynehead Court, Nynehead, Wellington, Somerset, TA21 0BN
- No 6** 17 June Ashley Court, Ashley, Tiverton, Devon, EX16 5PD
- No 7** 18 June Stogumber Gardens, Station Road, Stogumber, Somerset, TA4 3TQ
- No 8** 25 June Vexford Court, Higher Vexford, Lydeard St Lawrence, Taunton, Somerset, TA4 3QF







WIVELISCOMBE JOINERY LTD



- Quality Traditional Joinery -

All made in the heart of Wiveliscombe.
 Unit 6, Station Road, Wiveliscombe, Somerset, TA4 2LX.
 tel: 01984 624638 email: contact@wiveliscombejoinery.co.uk
www.wiveliscombejoinery.co.uk



**PLANT SALE +
COFFEE**

SATURDAY 27th MAY

10.00 to 12.30

11 NICHOLAS CLOSE, BRUSHFORD
TA22 9AS

Produce, raffle, cakes etc

Parking at Parish Hall

(by kind permission)

IN AID OF ST NICHOLAS CHURCH



BRUSHFORD PARISH HALL

**Let's get connected
Internet Cafe**

Are you having problems with the internet or struggling with technology?

If so, just drop in with your appliance, have a coffee and we will try to help sort it out with you.

14.30 to 16.30

First Thursday of the month

Sponsored by the



Local Community Fund

TRAX

LAND & WATER MANAGEMENT



- Water Treatment/Filtration
- Borehole & Spring Water
 - Pumping Systems
- Water testing/sampling



- Excavations & Groundworks
- Robocut for topping brambles/bracken etc on steep ground & Rotavator attachment
- Site prep and clearance

CALL NOW FOR A FREE QUOTATION
EXMOOR AREA

01643 851548 / 07817713693
www.traxgroundworks.co.uk

EUROVISION
 SONG CONTEST
 SEE THE FINAL
 on our giant cinema screen
DULVERTON TOWN HALL



13th May 2023
 8pm till late (doors 7.30pm)
 the bar will be open
 entry is free

High Park Community Music continue to grow and have performed at the event weekend at Minehead Steam train and in the square in Wiveliscombe. See more on our Facebook page @highparkcommunity music. Our next performance is at Milverton Street fair on May Day.

Bampton LARC



Warm comfortable space,
 available for hire by the
 hour.

Ideal for groups, arts and
 crafts, local clubs,
 rehearsal space,
 presentations etc, evenings and weekends

The Old School House, Station Road,
 Bampton EX16 9NG (opposite the car park)

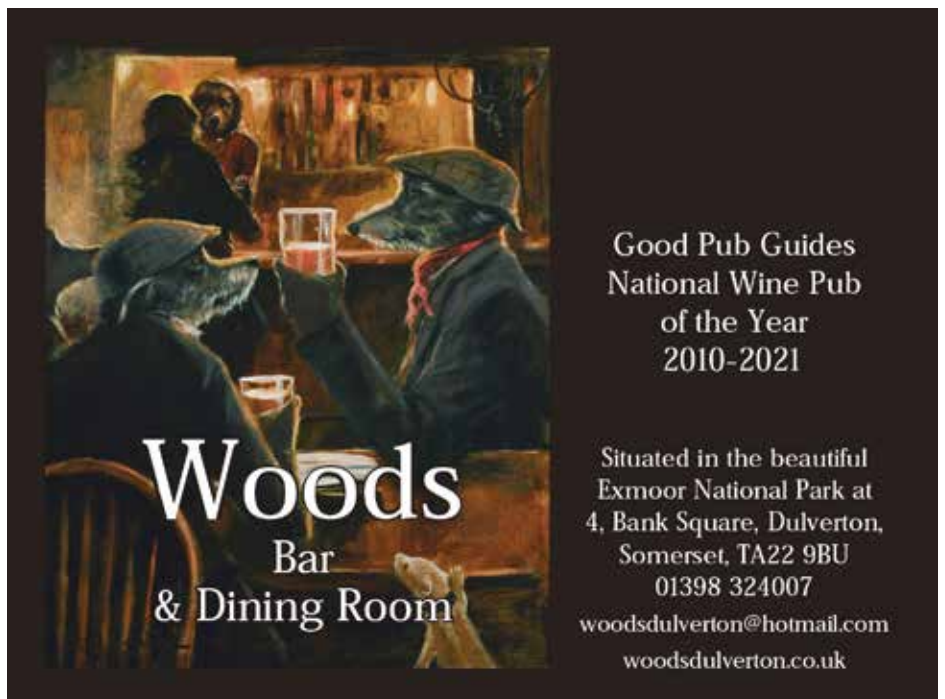
Contact: Oliver on 01398
 331267
 Email:
hello@bamptonlarc.org.uk
 Web: www.bamptonlarc.org.uk

More Than Just A Walk



**House and Pet Sitting Service
 Fully Insured**

07774 673314
clairweaver16@gmail.com

Woods
 Bar
 & Dining Room

Good Pub Guides
 National Wine Pub
 of the Year
 2010-2021

Situated in the beautiful
 Exmoor National Park at
 4, Bank Square, Dulverton,
 Somerset, TA22 9BU
 01398 324007
woodsdulverton@hotmail.com
woodsdulverton.co.uk

Dulverton Secret Gardens

After a break of six years, Dulverton Secret Gardens, a self-guided tour, returns on Sunday 2 July.

The gardens are of all shapes, sizes and stages of development; some are well established, others are much newer. Many have not been seen before, so it's a rare opportunity to visit some delightful gardens that are normally hidden away. They are all within walking distance of the town centre, making it easy to complete the tour during the day. Opening hours are from 10am to 4.30pm.

The entrance fee of £5 (in advance) or £7 (on the day) includes a map showing each garden's location, together with a short description written by the owner. Tickets are available in advance from Dulverton Post Office or the Tantivy. Alternatively, you can buy tickets on the day at Dulverton Town Hall, where you'll also find delicious refreshments.

Dulverton Town Council and Visit Dulverton are organising the event and making a donation to local charities.

Dulverton Events 2023

Summer and autumn 2023 are packed with exciting events to suit all ages and all members of the family...

As well as Secret Gardens, look out for the Dulverton Artisan Food, Drink & Crafts Festival on Exmoor Lawns, beside the River Barle, on Saturday 8 July.

The third annual Dulverton Fun Run & Canicross is on Sunday 17 September—entries for runners (with or without dogs!) opens soon.

Following the success of the town's Antiques Valuation Day in March, a second similar event is planned for September—date to be agreed.

And, by popular demand, the Dulverton Exmoor Literary Festival is back this year, on Saturday 18 and Sunday 19 November in the Town Hall. The line-up includes a host of well-known writers, including former Children's Laureate, Sir Michael Morpurgo.



Dulverton Events 2023

Don't miss these events in the pretty market town of Dulverton, Exmoor in 2023

Dulverton Antiques Valuation Day - What's It Worth? –
Saturday 25 March

Secret Gardens of Dulverton – Sunday 2 July

Dulverton Artisan Food, Drink & Crafts Festival –
Saturday 8 July

Dulverton Fun Run & Canicross – Sunday 17 September

Dulverton Exmoor Literary Festival –
Saturday 18 & Sunday 19 November

Dulverton by Starlight – Sunday 3 December
AND

DULVERTON MONTHLY FARMERS MARKET –
the last Saturday of the month April to September inclusive
More details at Visit Dulverton website, Facebook, Instagram & Twitter



hello@visitdulverton.com | www.visitdulverton.com | Dulverton, Somerset TA22 9HL

Secret Gardens of Dulverton

A Tour of Gardens

Sunday 2 July

Open

10am to 4.30pm



Tickets in advance from:
Dulverton Post Office (01398 323474)
or Tantivy, Dulverton

Tickets and refreshments available on the day from:
Dulverton Town Hall

£5 in advance £7 on the day
Accompanied children free
Supporting local charities

DULVERTON
GATEWAY TO EXMOOR





Haddeo Firewood

Kiln dried hardwood logs

£100 per 1m³

(larger dumpy bag or truck load, approx.)

Delivery can be arranged

Bickham

Timberscombe, Nr Minehead,

Somerset TA24 7UA

Mob: 07920 516225

Phone: 01643 841312

e-mail: bernard.dru@oakfloor.co.uk

EXMOOR Shutters & Blinds

"Excellent blinds and even better service."

"We love all of our shutters. Makes the house seem so much lighter and bigger. Would highly recommend. We love them!"

We are independent specialists offering a beautiful range of made to measure shutters and blinds to suit any interior styling, including perfect options to reduce the energy consumption within your home.



**FREE
CONSULTATION
AND SAME DAY
QUOTATION**

To find out more call us on -

07508 014353 / 07805 428517 or visit our website at

www.exmoorshuttersandblinds.com



JEFF PEGNUM

35 years' experience in all domestic, equestrian and agricultural landscaping and design.

- Groundworks, drainage and concreting
- Patios and garden projects
- All types of fencing
- Sewage treatment plants - to new regulations
- Internal and external stabling
- Landscaping projects
- Sand schools

07976 951860

Stockham Farm, Dulverton
pegnum.jeff@gmail.com

Workshop to let or share

01398 371663 PowersMawby@gmail.com
Available to let - a large clear space 15m by 6m, double opening door, ground floor of a beautiful Green Oak barn



Close to Dulverton/Bampton

This would be a perfect place to set up a Woodworking/Furniture school to teach about 5 students.

In the workshop, there is every wood working machine known to man. Professional 3 phase, four substantial work benches. All the machines are in working order and are available as part of the deal. There is room for negotiations. Or the machines could be sold separately. 01398 371663

“Meeting a man from the motor trade...”

There is very little that David Stanbury doesn't know about cars; after all, the motor trade has taken up his entire working life. David has seen many changes over the years, most recently the introduction of hybrid and electric cars but he thinks it will be a while before self-driving cars are ready to tackle Exmoor...

The Stanbury family has been synonymous with cars for more than a century and, these days, six members of the family work in the business: the partners, David and his brother, Rick, David's wife, Sue, and their sons, Dan and Simon, and Dan's wife, Katie.

David has taken a step back from the day-to-day running of the business but still takes an active interest—he now spends more of his time collecting cars from around the country. This gives David and Sue the opportunity to enjoy a couple of days away, travelling outwards by train and driving back to Dulverton. Meanwhile, Dan has taken over responsibility for car sales and Simon has stepped into Dan's shoes as workshop foreman at the Bridge Garage, which is run by Rick. Sue has worked in the main office for many years and now has Katie working alongside.

But the family's Dulverton roots go back to David and Rick's great-grandfather William Dart's time. William was the landlord of what was then the New Inn on the High Street and, in 1910, a young driver/mechanic called George C Stanbury moved into lodgings at the inn. George was a Devonshire man, born in Teignmouth; after completing his apprenticeship in Exeter, he took up a post in Barnstaple, eventually crossing the border. It was an auspicious move; not only did George marry the landlord's daughter but, within three years of his arrival, he and William had gone into the car repair business as joint owners of Dulverton's new Lady Street Garage. It stood behind Sherwood House, which has long been home to David and Sue.

As well as car repairs, the business partners also ran a bus service between the local railway station and Sherwood House, then a hotel with a livery. William had a lifelong interest in horses and, having sold the New Inn and with the onset of WWI, he turned his attention to supplying horses to the army, to support the war effort.

Over the decades, the Stanbury motor business has occupied various premises in Dulverton, including the Lion Garage in Union Street, with petrol pumps fitted at its Fore Street entrance. Despite all the restrictions imposed on civilian drivers and driving during WWII – no street lights, masks on headlights, signposts removed, and petrol rationing – George kept things

going. And in 1948, his son John returned to the UK, after being on active service in Burma, and joined the family business.

The first of the Stanbury locations that are familiar to us today dates back to 1962, when John bought a former market garden at the top of the town; this would become Wreneaton, which initially housed workshops, a showroom and a shop. As the servicing and repairs side of the business grew, it became increasingly clear that a bigger workshop was needed so, in 1981, when the Bridge Garage became available it offered an ideal solution.

And, just as locations have changed since the family firm was launched, so have the dealerships they have run over the past 60 years, including Singer, Morris, Subaru, and Great Wall. Robust Subarus, which could tackle almost any terrain, proved to be an ideal choice for Exmoor, popular with farmers, families, riders and dog owners alike. However, with manufacturers increasingly opting for more centralisation and dealerships close to cities and large towns, now the business sells more used cars than new. In the not too distant future, petrol and diesel pumps will become redundant and the workshop team are fully trained to work on the latest electric and hybrid vehicles.

What doesn't change is a commitment to customer service and the Exmoor community. “We recently sold a vehicle to the daughter of the couple who bought our first Subaru,” says David. And when the Winsford school taxi broke down in heavy snowy this winter, it was Stanbury's rather than a national breakdown service that came to the rescue.

David must be one of Dulverton's most familiar figures; he's often to be seen walking his dog round the town, catching up with friends and customers. He's a great example of “do what you love and love where you live.”

But what of the next generation? Dan and Katie's older son, Oliver, is currently at secondary school but he is doing his work experience at GC Stanbury & Son. Of course, by the time that Oliver and his younger brother, Jacob, are making firm decisions about career paths, those self-driving vehicles might have edged just a little closer to Exmoor...

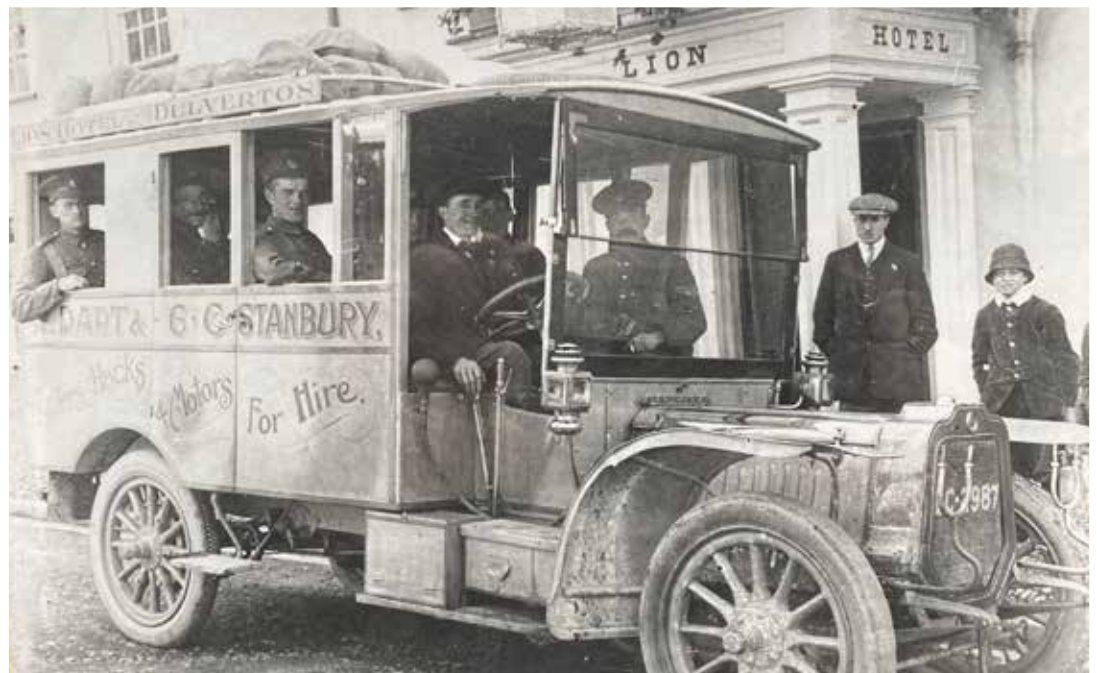
www.gcstanbury.co.uk

Diane Trembath



*The Stanburys (left to right):
Sue, David, Katie, Dan, Simon
and Rick.*

Early days: the Stanbury bus.





Bobcat Hire

Skid Steer Loaders 44", 48" & 66" wide

Mini Diggers ranging from 1.5 ton to 6 ton

Available with Hydraulic Auger, Breakers,
Post Banger, Grab and Tree Shear Grab

Self Drive/Competitive Rates

Tel: 01598 740406

Mob: 07970 914070

**Richard Smith – Agricultural Engineer
North Molton, Devon**

Craftsmen you can rely on, Quality you can trust...



01984 629131
07788 810576

*"Recognised Specialists
In Lime Rendering,
Lime Plastering &
Building Restoration"*



**WOODLOUSE
LIMITED
CONSERVATION**



Lime Plastering • Lime Rendering
Traditional Damp Management
Solutions • Cob Work • Stonework
Lime Pointing • Fireplace Restoration



"Restoring properties throughout Somerset & Devon"

www.woodlouseconservation.co.uk



Reliable, professional and friendly service for sole traders, partnerships,
not-for-profit organisations and small businesses

- ❖ Bookkeeping
- ❖ Self Assessment Tax Returns
- ❖ Payroll Management including Auto Enrolment
- ❖ CIS
- ❖ VAT Returns and MTD
- ❖ Final Year End Accounts
- ❖ Bookkeeping Software Set Up and Training

To discuss your business needs please call Rebecca on 01643 831638
or email info@barlebookkeeping.co.uk

Licensed and regulated by the Institute of Certified Bookkeepers (ICB)
Practice Licence Number: 22357

Jackie Kelly Fitness

Monday	7am	Kettlebells
	5.30pm	Fitness Pilates
Tuesday	7am	Upper Body and Core
	6pm	Kettlebells
Wednesday	7am	Tone and Sculpt
	9.30am	Fitness Pilates
Thursday	7am	Full Body Dumbbell
	6pm	Kettlebells
Friday	7am	Body Conditioning
	9.30am	Gentle Fitness Pilates

Tailored Personal Training

Mobile service, giving one to one training, safe for back and core. Pre and post op. Get fit. Suitable for all ages and abilities.

07487 711445

Jackiekelly416@gmail.com



Could you be eligible for more income? asks Carolyn Matravers of Bluebell Financial Management

In these challenging economic times, it is so important to maximise your income from all sources. Attendance Allowance is a State benefit that is available to those over State pension age who fulfil a certain eligibility criteria.

If you require some form of assistance undertaking various activities of daily living there could be grounds to make a claim, regardless of your personal wealth.

You may have already introduced some risk management into your home by sleeping with the telephone by the bed, keeping the toilet light on at night or maybe you have an elevating chair that eases an achy back or knees – these all count towards a successful claim.

You don't need to be receiving any direct care or paid help in the home either. You may be living alone or as part of a couple. There could be a support network of family, friends or neighbours who keep an eye out for you. This support network could be one person or a number of individuals who 'lend a hand' when needed, picking up shopping or transporting you to medical appointments.

From April 2023 a successful Attendance Allowance claim will generate between £3,541-£5,291 per annum, tax-free – so it is definitely worth having a conversation to find out if you are eligible. In these challenging times, additional tax-free income could be a welcome prospect for you or a family member.

At Bluebell we take time to discuss your personal situation and understand the challenges of day-to-day life and consider whether you meet the criteria.

To establish if you are eligible for more income and to seek guidance on how to make a successful claim contact Carolyn Matravers at Bluebell Financial Management on 07944 992682 or carolyn@bluebellfinancialmanagement.co.uk



Bringing together
empathy and expertise,
Bluebell Financial Management
sets new standards in the
provision of later life services.



Local advice and support is only a call or email away...
07944 992682 | carolyn@bluebellfinancialmanagement.co.uk
bluebellfinancialmanagement.co.uk   



Rupert White
INTERIORS



- Full Design Service
- Project management
- Comprehensive range of fabrics
- Curtain making
- Upholstery
- Lighting
- Accessories
- Sourcing
- Floor coverings

Rupert White Interiors

The Stables, Bampton, Devon, EX16 9LA

Tel : 07789 377 412

enquiries@rupertwhiteinteriors.co.uk

Please ring to make an appointment



Belinda Hopkins

01398 324 053

sew_n_sew@hotmail.co.uk

www.sew-n-sew.co.uk

Quality bespoke made to measure curtains,
roman blinds and cushions.

Curtains adapted and altered to fit

Curtain poles, tracks, venetian & roller blinds

Range of fabrics available including iLiv and
Clarke & Clarke



HOBBS Electrical Contractors Ltd



* Commercial * Domestic * Industrial *

Electrical Installation

Rewires, new builds & renovations

Maintenance & Repairs

Inspection & Testing, Portable Appliance Testing

Dulverton: 01398 323518 Tiverton: 01884 253563

Unit 4, Exebridge industrial Estate, Exebridge, Dulverton, Somerset, TA22 9BL

STEVE BISHOP PEST CONTROL SERVICES LTD

*Covering West Somerset,
North and Mid Devon*

*Control of rural,
residential & commercial pest species*

*Qualified Pest Control
Technicians*

01643 851267

07870 815400

For Fast, Friendly, Reliable Service

**Rats, Mice, Moles,
Crawling and Flying Insects
Inc. Wasps, Fleas, Bedbugs,
Cockroaches, Flies,
Bird control and proofing
Electric Fly Killing Units Supplied**

"STAND UP FOR RED SQUIRRELS" FAMILY FOREST SCHOOL PROGRAMME



A PROGRAMME COMPRISING OF 3 X 2 HOUR SESSIONS DESIGNED TO EDUCATE CHILDREN ON THE IMPORTANCE OF OUR LANDSCAPE AND OUR BELOVED NATIVE RED SQUIRREL

MONDAY 24TH JULY

EXMOOR & SQUIRREL CLUES - HABITATS, TREE DAMAGE, WHY EXMOOR & WHERE HAVE THE REDS GONE? START 'BUILDING' A SQUIRREL WITH TOOLS.

MONDAY 31ST JULY

BE A SQUIRREL, IF I WAS A RED - DIFFERENCES BETWEEN GREYS AND REDS, WHAT DO THEY EAT, WHY THE TAIL? 'BUILD' YOUR SQUIRREL

MONDAY 7TH AUGUST

CELEBRATING REDS - CAMP FIRE, BRINGING TOGETHER ALL WE HAVE LEARNT. FINISH YOUR SQUIRREL.

WE ARE ASKING FOR A £15.00 DONATION UPON BOOKING PER FAMILY TO COVER ALL 3 SESSIONS. THIS DONATION WILL BE FORWARDED TO THE RED SQUIRREL SURVIVAL TRUST TO AID FURTHER RESEARCH AND CONSERVATION EFFORTS

CONTACT US FOR MORE INFORMATION AND BOOKING DETAILS

**EMA LOU ROWE
07973 392394**

WILDWELLIES@GMAIL.COM

EVERY SPECIAL FAMILY FOREST SCHOOL PROGRAMME BEING DELIVERED TO YOU BY WILD WELLIES (TALES AND TREASURES) IN COLLABORATION WITH THREE ATOP WOODLAND SERVICES, RED SQUIRREL SOUTH WEST AND EXMOOR NATIONAL PARK AUTHORITY



**Red Squirrel
South-West**



**EXMOOR
NATIONAL PARK**



AB Plumbing

Your local plumber

All work considered
No job too small
24 hour Emergencies
Credit and Debit cards accepted



07779 348724

Landline 01398 351436
andyboakford@icloud.com



General Builders, Plasterers & Decorators

07792 251977
andyhayesbuilder@yahoo.com

Call for our

- Project Management Services
- Exterior House Decoration and
- Rendering

All Aspects of.....

Alterations

Renovations, conversions
& new bathrooms

Plastering & Decorating

Internal & external plastering,
rendering, painting, new ceilings,
walls & over skimming

Roofing

Repairs, Renewals or cleaning.
Chimney repairs & rebuilds.
Guttering, cleaned, repaired or
replaced

General Building

including retaining walls,
stonework, repointing, patios,
fencing etc.

Over 30 Years Experience by Qualified Tradesmen



Browns of Dulverton

www.brownsfordulverton.com

  01398 322933

Lyanne Motteram Foot Health Practitioner

Dip CFHP, MPSPract



Do you suffer from corns,
callus -hard skin, fungal
nails, athletes foot or
ingrowing toenails?

Contact Lyanne
07703 627813
Appointments Available
Thursdays

Laura Harding McTimoney Chiropractor

MChiro, MMCA



Chiropractic Appointments
available on:
Monday, Wednesday
Saturday

Contact Laura
07980 059807
laurahardingdc@gmail.com

Sharon Reed Remedial & Sports Massage Therapist

ITEC, Member of CNHC



Massage and Deep
Oscillation Therapy
appointments available on:
Tuesdays

Contact Sharon
07980 956324
sharonreed58@yahoo.com

Exmoor Wellness Clinic, 36 High Street, Dulverton TA22 9DJ

The Therapist Collection

www.thetherapistcollection.co.uk



Claire Fisher MAR

Reflexology & Indian Head Massage

01823 401502

www.clairefisher-reflexology.co.uk

Lis Jorgensen BSC (Hons)

Medical Herbalist

07816 261996

www.challickwoodherbs.co.uk

Kate Pegram LCCH MARH

Homeopath

07971 218727

www.evolutionhomeopathy.com

Paul Tam Cert. Hyp.CS.MHS Accred

Hypnotherapy & Counselling

07768 890781

www.tamtherapy.co.uk

Helena Trump MAHPP

Counsellor & Psychotherapist

01984 624409

www.helenatrump.co.uk

Julia Walder MFHT BSc (hons)

Soft Tissue Therapist & Aromatherapist

01823 400587

www.willowgrace.co.uk

The Therapist Collection

Teenagers and Exam season

The teenage years are unquestionably one of the most awkward, challenging, and frustrating years of a person's life. Teenagers seem to change daily, one minute they are interested in a new sport, topic, or type of music, only to completely shift gears the next. Constantly exposed to new ideas, situations, people, and social media, teenagers work to develop their personalities and interests during this time of great change, often driven by a desire for independence.

Exam stress - It is completely normal to feel anxious or stressed before and during exams. In fact, a little nervousness can help you perform your best. However, when this distress becomes so excessive that it interferes with performance in an exam; it is known as **Test Anxiety**. Test anxiety is a psychological condition in which people experience extreme distress and anxiety, sometimes panic attacks, in testing situations. Teenagers can also experience symptoms of exam stress which may include, feeling moody, low or overwhelmed, having trouble making decisions, losing appetite or overeating, poor sleep patterns, difficulty studying, even headaches or stomach upsets.

Helena Trump - Counsellor & Psychotherapist

Emotional symptoms can also include depression, low self-esteem, anger, and a feeling of hopelessness. Adolescence is full of challenges, fortunately, there are steps that teenagers can take to alleviate these unpleasant and oftentimes harmful symptoms. Test anxiety and exam stress can be very treatable. If you are struggling to manage, consider talking to a professional, perhaps a **Counsellor**, who can enable you to utilise self-help strategies designed to help you manage and lower your anxiety levels, change your behaviour and the underlying thought patterns, and thus deal with a difficult period in your lives. www.helenatrump.co.uk

Lis Jorgensen - Medical Herbalist

There are so many ways to prepare oneself for exams and manage the associated pressure. Alongside regular exercise and a healthy diet, herbs can help you to relax and remain alert during study and exams. Most importantly, if you feel nervous or stressed, avoid stimulants like caffeine. This increases tension in your nervous system and makes it harder to study and retain information. Traditionally used, relaxing and sustaining herbs such as chamomile, green oats, vervain, lemon balm and valerian in small amounts will help you to regain focus. Herbs such as rosemary have been shown to increase circulation to the brain and increase memory function. Sleep can also be managed if necessary.

A medical herbalist can give tailor made advice to you on herbs, lifestyle and dietary strategies including nutrient supplementation to help you manage stressful life circumstances.

www.challickwoodherbs.co.uk



Come and visit us for a tour and tasting!

Try all our premium spirits and learn about production. Give us a call to book your tour.

01398 323 488
exmoordistillery.co.uk





01984 623404 | wci.co.uk
enquiries@wci.co.uk

Service and repair of all sewage treatment plant, pumping and rainwater harvesting equipment.

All manufacturers. Domestic and commercial systems.

Annual Service Contracts and Emergency Call Outs
 (Service report sent after every visit)

Call us today to arrange a service visit - 01984 623404

British Water Accredited Service Engineers.

✓ Responsive

✓ Fully Insured

✓ Professional

✓ Family Run

DULVERTON ART CLASS

*has a few spaces for new faces.
 Drawing, painting, mixed-media,
 collage.
 Beginners welcome.*

*If you would like to join our friendly,
 informal class,
 or for more information
 contact Pauline on...
 07982903980
exmoorpauline@gmail.com*

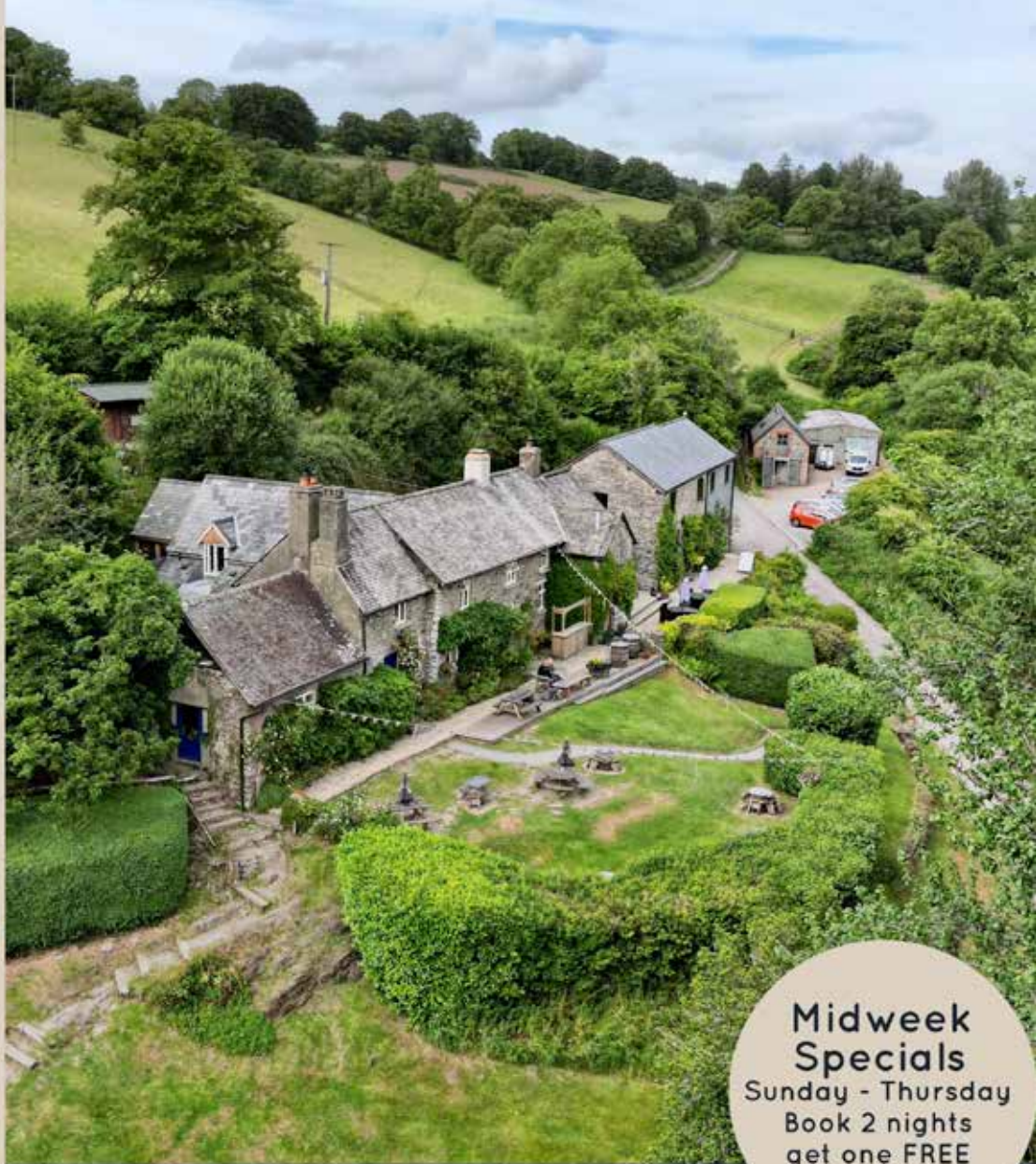
Roger L Hammond Architectural Design Services

Free initial consultation
Feasibility studies and design advice
Measured survey, detail drawings
Planning and building regulations applications
Extensions, barn conversions and new build
Listed buildings and conservation work
Specifications prepared
Tendering, procurement and supervision
Residential and commercial
35 years experience

Reasonable rates

**Tawny, 8 Great Meadow, Dulverton,
 Somerset, TA22 9DT**
Tel/Fax: 01398 324644, mobile 0777 906 0969
e mail; rl.hammond@btinternet.com
website; www.rlhammondarchitecturaldesign.co.uk





**Midweek
Specials**
Sunday - Thursday
Book 2 nights
get one FREE
T&C Apply

Tarr Farm Inn

Telephone: +44 (0)1643 851507

eMail: enquiries@tarrfarm.co.uk

Tarr Steps, Dulverton, Exmoor, TA22 9PY

www.tarrfarm.co.uk



OIL BURNER SERVICE
MAINTENANCE & REPAIRS

PAUL JONES
EXFORD



with over 15 years' experience
OFFERING YOU THE BEST QUALITY
OIL BURNER SERVICING AROUND

COMPETITIVE RATES
BEST QUALITY SERVICE
ALL REPAIRS UNDERTAKEN

Call now on 01643 831384
or 07811 600694

PAUL HARDY
ANTIQUES



Holland House
1 Bridge St
Dulverton
TA22 9HJ
www.hardyantiques.co.uk

Interiors
Decorative
Antiques
07766 428050

maitlandwalker 
Solicitors

**PRIVATE CLIENT SERVICES
FOR INDIVIDUALS**



- ◆ Will Preparation
- ◆ Estate Planning
- ◆ Lasting Powers of Attorney
- ◆ Trusts
- ◆ Tax (inheritance & capital gains tax)
- ◆ Agricultural and landed estates
- ◆ Foreign assets
- ◆ Estate Administration (probate)
- ◆ Wills, Trusts and Estate Disputes
- ◆ Deputyship applications

Together we can help you to manage your affairs and plan for the future whatever your situation.

Tel: 01823 745 777

Email: anna.neil@maitlandwalker.com james.ashby@maitlandwalker.com



**CHIMNEY
SWEEP**

NACS REGISTERED
CLEAN AND EFFICIENT
FULLY INSURED/ CERT ISSUED
COWLS AND BIRDCUARDS FITTED
WOODBURNERS REFURBISHED
POWER SWEEPING
CCTV CAMERA SURVEYING

PHONE IAN

TEL : 01984 640893

MOBILE : 07502099323

Tourism's best celebrate at the Eden Project



Leading tourism businesses from across south west England recently celebrated in style, when more than 90 awards were presented at the 2022/23 South West Tourism Excellence Awards.

The annual event was the culmination of 12 months of entry, judging and feedback, with almost 300 winners, supporters and tourism leaders gathering at the Eden Project for the first time in 10 years.

A total of 482 entries were submitted from across the region, including Wiltshire, Gloucestershire, Bath, Bristol, Somerset, Dorset, Devon, Cornwall and the Isles of Scilly, with many winning county schemes in Cornwall, Bristol, Bath and Somerset, Dorset and Devon before being selected for the regional scheme.

The awards, which retained their 'outstanding' accreditation in the Awards Trust Mark scheme, represented many months of evidence gathering, online entry, judging and county awards. In what has been another difficult year for many in the industry, they are recognised for their rigour and independence of judging, with many winners progressing on to the national VisitEngland awards, in which the South West has been top-performing region for more than five years.

All forms of hospitality business were amongst the winners, with cafes, pubs, water sports schools and falconries all celebrating alongside attractions, camping and glamping sites, holiday parks, B&Bs, cottages and hotels.

Steve Hayfield, Customer Experience and Delivery Director at headline sponsor, South West Water, said: "We are proud to be continuing our relationship with the South West Tourism Awards, recognising that a thriving tourism industry is essential to the economic wellbeing of our beautiful region. Once again we are delighted to celebrate the many outstanding businesses across our region.

"We know our water environment is vital to both locals and visitors alike, and over the last year our region has faced a significant challenge around water resources, which our customers and communities have helped us to tackle head on.

"Our Save Every Drop campaign is focused on how customers, businesses and visitors to the region can help to bring our precious water supplies back on track and we thank everyone in our region for the crucial role they have played in helping us do that. We hope to keep working together as we strive to ensure resilient water supplies, and continue to support the needs of the region in the future."

Robin Barker, Director of Services for Tourism Ltd, who manage the awards, added: "What a delight to be in the company of the region's best, and at one of our most iconic venues. The conversations and celebrations were a real joy—I wouldn't have missed it for the world!"

Claire Benton

5 Silver Street, Bampton, Devon EX16 9NR

**Payroll Services
offering**

**■ Payroll ■ Auto Enrolment from 1 to 99 employees
Any area covered**

Email: cjbenton123@gmail.com Tele: 01398 332048 Mobile 07754 577691

Co-Director, Nell Barrington, added: "It was fantastic to see so much happiness and celebration among the best business in south west England after another difficult year for hospitality and tourism, congratulations to them all."

See the complete list of winners and finalists here:
<https://www.southwesttourismawards.org.uk/winners>

Dulverton Action Group Litter-picking

(3rd Sunday)

Sunday 21st May

Sunday 18th June

10.30 meet by the Heritage Centre

Everyone welcome!

~and all kit supplied~

Get Published with Exmoor News

You are thinking about your book or have written your book and are looking for a publisher. Exciting times. We have produced over 44 books and every book is unique.

What we offer:

We offer options to get your book produced – in house or different online solutions – for both picture and text based books.

Discussion on production costs for each individual book. Some are keyed from handwritten notes and some are produced from text supplied in digital form or audio.



Please contact us for more information.
Either on mobile 07497 914441 or
email exmoornews@gmail.com.



More information and tips at <https://exmoornews.co.uk/book-publishing/>

DULVERTON VINTAGE FILMS

Wed 10th May

An AMERICAN in PARIS

Gene Kelly, Leslie Caron & Oscar Levant
Music by George & Ira Gershwin
(1951)

Wed 14th June

The ENGLISH PATIENT

Ralph Fiennes, Juliette Binoche, Kristin Scott
Thomas, Willem Dafoe, Colin Firth
(1996)

**Film starts at 2.30 pm
at Fishers Mead Community Centre**

£2 includes tea and biscuits



**New Build
Extensions
Renovations
Loft Conversions**

Tel: 01398 323789

Mobile: 07837 729484

Email: mikecottrell20@gmail.com

The Snowdrop Tree

Since its publication in January, *The Snowdrop Tree*—a story and activity book to support a child through bereavement—is bearing fruit. Written and illustrated by Ema Rowe, in consultation with Denise Ross, it has already helped professionals support bereaved children and young people.

Ema introduced her book locally at an inset day for primary school staff and, thanks to an anonymous donation, has been able to give a free copy of both the book and its accompanying *5 Top Tips* for teachers leaflet to 10 schools.

The Snowdrop Tree has been recognised nationally, with Child Bereavement UK reviewing the book, agreeing to share details with their Bereavement Practitioners and adding it to the resources page of the charity's website. The Childhood Bereavement Network has also shared details of *The Snowdrop Tree* with their members across the UK.

Denise's Kent-based charity, Slide Away, has already used the book and its activities to support a group of children bereaved by suicide. The story and outdoor activities took place over a cold January weekend, but the feedback from staff, parents and children was extremely positive. Being outside helped the children, with many of them saying that they loved being in the woods. It helped them to release their anger, while the stick weaving helped them feel calmer.

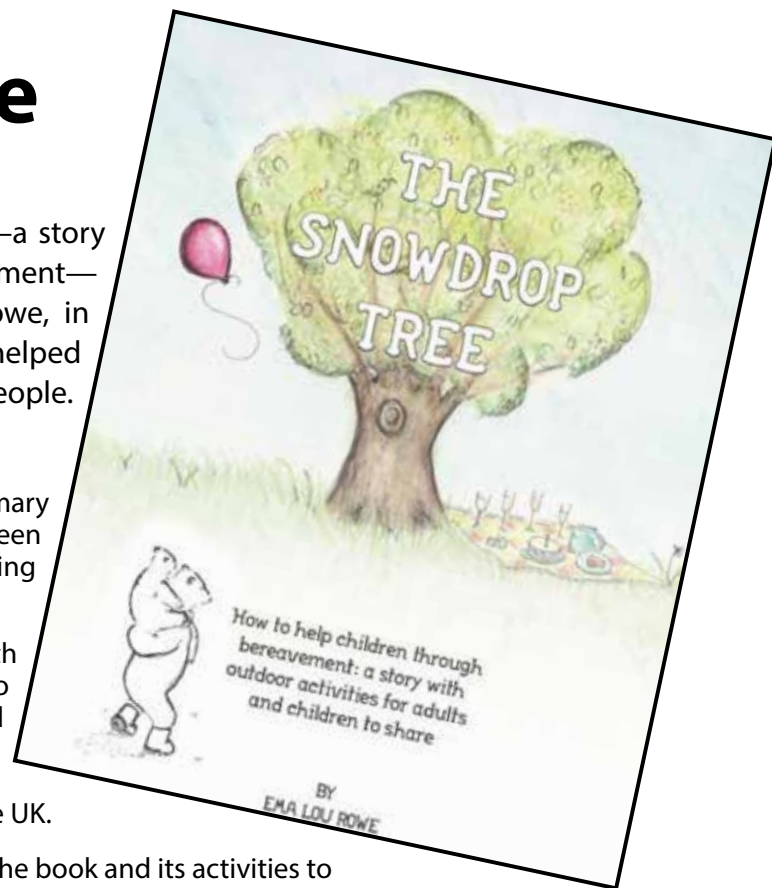
Ema's book is three in one. The first part tells the story of the impact on the Snowy Bear family when their favourite tree has died; the second section provides information for adults supporting bereaved children, and the third section offers ideas for outdoor activities. She will be talking about *The Snowdrop Tree* to BBC Radio Somerset at the end of April.

For more information about the book please contact Ema at: wildwellies@gmail.com

The Snowdrop Tree is published by *Exmoor News* and available for sale on Amazon.

Find out more about Child Bereavement UK, visit:

www.childbereavementuk.org/



FITNESS CLASSES FOR ALL

with Linda London

Booking is essential

Numbers limited during the
Covid-19 restrictions

Mon 5.30pm Dulverton Town Hall
Over 50s - Use it or Lose it
(for keeping active)

Wed 9.30am Brushford Parish Hall
Move, Tone, Chat & Go
(for keeping active)

Wed 11.00am Brushford Parish Hall
Easy Exercise for the Older & Wiser
(for the less active)

Thurs 5.00pm Brushford Parish Hall
Over 50s - Toning Legs, Core and Arms
(for a toned body)

Fri 8.30am Brushford Parish Hall
Step, Tone, Sweat & Stretch
(for the very active)

All classes £5.00 (payable by BACS monthly preferred)
Tel: 01398 323393 Mob: 07866 937654
Email: linda@lindalondon.plus.com

01884 841302
07971 192981

Window Warehouse
DEVON LTD

Bifolds, French Doors, Patio Sliders, Windows and
Doors in UPVC and Aluminium.
Conservatories and Warm Roofs, Composite Doors.
Guttering, Fascia and Ancillaries.
Replacement Double Glazing Units.
Phone for a quote • Open to Trade and DIY

- Email: windowwarehouse72@gmail.com
- Web: www.windowwarehousedevon.co.uk
- Facebook: WindowWarehouseDevon

Unit 1 Langlands Business Park, Uffculme,
Cullompton, Devon EX15 3DA

Window Warehouse Devon are located
between Willand and Uffculme on the
B3440 at Langlands Business Park.

Easy access from M5 Jc27 or Jc28.

Opening Hours: Mon-Thu 7.30am - 5.00pm.
Fri 7.30am - 1.00pm



**Diamond
Shine**

**Mobile Vehicle
Valeting**

**Professional
Affordable Reliable
Your local vehicle
cleaning company**

07896 154 176

phil46yam@hotmail.com

Studio B

27 High Street, Dulverton

Pole dance and stretch lessons



Scan the QR code
for class availability
and to book



Find me on social media
@studiobpole
Email me at
poleatstudiob@gmail.com

Everyone aged 18
and over welcome



Exmoor Friends— Widening Horizons (Previously Exmoor u3a)

As with a number of small branches of u3a (University of the Third Age), the Exmoor branch has been dissolved due to limitation of funds. Forty per cent of membership subscriptions were allotted annually to u3a's central organisation, from which the Exmoor branch derived little benefit.

Dissolution of the Exmoor branch, effective from 31 March 2023, had been proposed and carried by an 80% majority of members at a Special General Meeting in January. It has now been replaced by a similar membership group, with healthier funding available for speakers, leisure activities and social events.

Naming the new group was achieved by a democratic process. All 70 members had the opportunity to select from a choice of 20 possibilities. By a clear margin, "Exmoor Friends: Widening Horizons" was the favourite and was duly adopted, together with a new constitution, with effect from 1 April 2023.

u3a has had a presence in Dulverton since 1999, so appreciation is due

to those, past and present, who have managed and maintained the Exmoor branch.

We meet on the last Wednesday of the month (except during August and December) at Dulverton Town Hall, 10.00am for coffee. Talks start at 10.30am and last about one hour. Non-members are very welcome and can attend their first meeting free of charge.

31 May: **Phillip Bratby**
Renewable Energy—The Good, the Bad and the Ugly

28 June: **Stephen Powles**
In Pursuit of the Improbable—Wildlife



JOHN FRENCH
(Plumbing and Home Improvements)
**Karslake House, Winsford,
Minehead, TA24 7JE.**
All aspects of plumbing carried out at affordable rates.
Full Bathroom and Kitchen installation service.
(Call for a free estimate)
No job too small.
Tel: 01643 851215




ROSEMARY TREE
garden design consultancy

Breathe new life into your outdoor space or holiday let garden. With Garden Design and planting plans, take the guesswork out of transforming your garden.

✉ rosie@rosemarytree.co.uk
☎ 07506673242 or 01398 341855
📱 [rosieclairretreharne](https://www.instagram.com/rosieclairretreharne)

www.rosemarytree.co.uk

As I write this on a damp April morning, if we look at the recent weather, it doesn't really feel like spring has quite sprung. Flowers are starting to bloom and it's so nice to see a bit of colour emerging throughout the beautiful Exmoor countryside.

Market Update

The housing market and the economy are closely linked but, despite the cost of living, the rate of inflation has slowed and is expected to fall over the course of the year. There is also a welcome fall in mortgage rates, with rates of below 4% for lower loan to value mortgages.

We continue to be confident for a positive spring market with already noticeable increased stock and buyer levels. However, we still have to be realistic with our expectations when it comes to pricing and it is very important to remember that, when launching a property onto the market for the first time, the guide price is key.

Most buyers initially focus on two things when intending to buy: 1) The price and 2) photos. First impressions are absolutely key and that is why Webbers and Fine & Country provide a realistic overview of the market and pricing, alongside offering bespoke marketing packages to ensure no proverbial stone is left unturned.

Below is a selection of new properties currently available through the Dulverton Office:



Dulverton – Guide Price: £450,000

This superb well-presented 2- (potentially 3-) bedroom residence is situated within the small development known as Hollam Drive, located just a short distance from the town centre of Dulverton. The

property enjoys wonderful countryside views of the Barle Valley, split level gardens, open plan kitchen/diner, ample parking and garage. EPC: D, Tenure: Freehold, Council Tax: F.

Brompton Regis- FOR SALE VIA ONLINE AUCTION.

Auction Guide: £250,000

For sale for the first time in over 70 years, an exciting and rare opportunity to purchase a detached 3-bedroom character cottage, located right in the heart of the pretty Exmoor village of Brompton Regis. Requiring modernisation but offering fantastic and far reaching countryside views, a large rear garden and stone outbuildings. This property needs to be viewed to fully appreciate what this wonderful unique home offers. EPC: G, Tenure: Freehold, Council Tax: C. Auction Date TBC.



Bury – Guide Price £820,000

Located at the foot of the Haddeo Valley, this prestigious grade II listed former chapel dates from 1889 and is located in one of the most picturesque hamlets within the Exmoor National Park. Access to some of the finest walking, riding and cycling on Exmoor is all available from the doorstep. The former chapel was sympathetically converted in the late 1980s to create a wonderful home, whilst retaining its charm and architectural character, with a sizeable studio/workshop, parking, beautiful rear gardens with south facing countryside views. EPC: Exempt, Tenure: Freehold, Council Tax: F.





**Dulverton – Guide Price
£395,000**

Located a short distance from the town centre of Dulverton this immaculately presented detached single-storey home is situated in an elevated position, with far reaching countryside views, pretty front and rear gardens, garage and parking.

EPC: D, Tenure: Freehold, Council Tax: D.

For further details, please contact the office on 01398 323271 or, alternatively, if you would like an up-to-date valuation and to learn about the range of services that Webbers and Fine & Country offer, then please do not hesitate to contact the office.

Other News

We will be holding our annual and extremely successful Guildford Exhibition on Saturday 3 May 2023 at the G-Live centre in Surrey. This event attracts a range of buyers who are looking to relocate from the home counties and neighbouring areas providing us with a fantastic opportunity to showcase our properties. There will be representatives from each county and I will be the main representative from Exmoor and Somerset.

If this event is something that you would like your home to be part of then please contact me on 01398 323271 or email: ginny.saunders@webbers.co.uk for more details.

Ginny



Ginny Saunders
– Local Director



Louise Garner
– Administrator



Rebecca Whitehead
– Property Advisor



Warwick Wilcox
– Property Advisor



...where it really matters

ANNUAL WESTCOUNTRY PROPERTY EXHIBITION

Don't miss the opportunity to showcase your property at our upcoming property exhibition. As a special offer, we are now including your home for **free** at this exciting event. Get your property seen by lucrative potential buyers and let us help you make a successful sale.

CONTACT US TODAY TO LEARN MORE ABOUT THIS EXCLUSIVE OFFER ON 01271 347851



Cornwall



Andrew Simpson
CPEA MNAEA

Devon



Adrian Hartwick
MNAEA

Somerset



Ginny Saunders

JLF LOGO PHOTO COMPETITION 2023

While waiting for some sunshine to arrive, and to bring a smile to people's faces, the Jim Laker Fund has decided to run a fun competition during 2023. We are asking people who own a JLF bag or top (T-shirt etc) with our famous "Where in the World is Wiveliscombe?" logo, and have sported their bag or top in any exciting places, to take a photo. The competition aims to find the most interesting or unusual destination for our JLF merchandise—the lucky winner will win one of our tops or bags to add to their collection!

We are asking people to send us their own photos showing the location and the bag or top's "Where in the World...?" logo via Facebook Messenger, and they will then appear on our public JLF Facebook page (so be careful with the content!). We've added a few photos to get people started; these won't be included in the competition!

You can buy JLF bags and tops at Wivey Larder or at one of our street fair stalls, such as Milverton, 10 Parishes. The deadline for submission is 31 December 2023.

Find out more about the Jim Laker Fund here: www.jimlakerfund.co.uk



www.westcars-tiverton.com

Come and take a look at our brand **New Website** for great offers, a fantastic range of new & used cars and unrivalled customer excellence!

Customer Excellence 2020 **5** Year's Customer Excellence

Westcars of Tiverton 11 Blundell's Road, Tiverton EX16 4DB
Telephone: **01884 257143** or **01884 230807**
or search **Westcars Tiverton** or **f Westcars Approved**



EXMOOR PROPERTY CONSERVATION

- Traditional and Modern Plastering
- Brickwork • Stonework • Tiling
- Painting and Decorating

Call Matthew for a free quote on: **07508 936 551**
exmoorpropertyconservation@outlook.com
"Your property is my priority"





Keeping the Fizz

Minehead Museum curator, Julian Luke, looks at how festive drinks were kept sparkling in times gone by.

Over the festive season we probably opened a bottle of sparkling mineral water or other fizzy drink, confident that it would deliver that fizz as good as the day it was bottled.

A hundred and fifty years ago this was not such an easy task and some of the exhibits in Minehead Museum's collection illustrate changes over time.

Mineral water, for example, was sold in glazed pottery containers, smaller versions of the flagons that had been produced for year for wine merchants. The move to cheaper glass bottles posed an interesting challenge as to how to retain the sparkle. The initial problem was that glass bottles were traditionally sealed with a cork. Stored upright, the cork would dry out and the drink would go flat. The bottles had a standard flat base and, in spite of encouragement from the manufacturers, shopkeepers regularly stored and displayed them upright.

One solution was the development of the "Torpedo" or "Egg" bottle, with a rounded base so that it would not stand up on its own and had to be stored on its side, just like laying down wine in a cellar. The fluid then was in constant contact with the cork, which didn't dry out, maintaining the airtight seal. Patented by William Hamilton around 1814.

The other innovative solution was the Codd bottle, a new design developed by Hiram Codd in the 1870s. This involved a longer neck to the bottle, with a glass marble that, under pressure from the carbonated drink, would be pushed up to a rubber seal. These proved very effective but also proved popular with children, who would smash the empty bottles to get to the marbles.

The museum houses a number of these bottles, along with the earthenware bottles and flagons that preceded them. Many local firms are represented including Culverwell and Bating & Hayward.

Minehead Museum, Beach Hotel Complex, The Avenue, Minehead, Somerset TA24 5AP

www.mineheadmuseum.co.uk



Vineyard Tours

Cream Teas

Wine Tastings

Traditionally produced, quality sparkling wine from Devon

01398 361 612 • www.wellhayesvineyard.co.uk



Ebemezer Culverwell "Torpedo" bottle



Hawkins & Whitman "Codd" bottle with marble in neck



"I ordered a watch online with personalised engraving for my partner's upcoming 40th birthday. The company has since gone out of business. I keep phoning and emailing them but can't get through to anyone. I'm assuming they can't fulfil my order but I'd paid for the watch upfront and can't afford to buy another gift until I get my money back. Please help!"

This is frustrating both in terms of potential loss of money but also in terms

of the time spent searching for a suitable gift. If you haven't had a dispatch note yet it suggests that the order is not on its way. If the company has gone into administration it may still be able to fulfil outstanding orders but, if the company is already in liquidation, you'll need to try to get your money back. If you're unsure about what state the company is in the Citizens Advice website has information on how to find out: www.citizensadvice.org.uk

As it was an online purchase, it seems unlikely that there is a shop or office that you can contact so the next steps depend

on whether it's a limited company (with 'Ltd' or 'plc' after its title) or if it's a sole trader or partnership. If it's a limited company you will need to get details of the administrator or receiver—the person dealing with settling the trader's debts. The names of those administrators will usually be on the website of the company that's gone bust. You should register your claim as a creditor on the GOV.UK website*. Fill out the form with the details of what you are owed and send it to the administrator dealing with the trader's debts. Unfortunately there is only a small chance that any money will be refunded, as there will be a long list of creditors and individual small claims will be at the back of the queue.

More encouraging is to try and get a refund with a Section 75 claim or a chargeback on the credit card provider or bank. Again, check out the Citizens Advice website for details of making these claims. This is actually the best option if the seller was not a limited company but a sole trader or partnership.

Every case is different but to establish specific rights in a given situation call the Citizens Advice consumer helpline on 0808 223 1133 or visit:

www.citizensadvice.org.uk/consumer/somethings-gone-wrong-with-a-purchase/if-a-company-stops-trading-or-goes-out-of-business/

Alternatively, ring our free, local AdviceLine number on 0808 27 87 999 or visit our local website on www.ruraldevoncab.org.uk and click on 'get advice'.

Would you like to help people solve problems like this? Why not volunteer with us? You will meet new people, get full ongoing training and support and get the satisfaction of contributing to our local community. Take the first step and contact recruitment@ruraldevoncab.org.uk. We look forward to hearing from you!
*www.gov.uk



TIVERTON & TAUNTON FLOORING LTD

39 Bampton Street & William Street Warehouse
Tiverton, Devon, EX16 6AH

HAL WHITE

Mobile: 07770 637 368

01884 257 144

"I recently started a new job, where my boss has told me I will have to work on bank holidays. This was never the case in my old job. Can my employer really make me work on a public holiday—and should I get paid extra if I do?"

Unfortunately, when it comes to bank holidays, whether or not staff have to work is up to their employer and you don't have to be paid more if you do. The situation will vary from job to job and will depend on a number of factors such as whether your place of work is open on bank holidays, your hours of work and, crucially, what your contract of employment says.

Take a look at your contract. It may say that you will always get bank holidays off or it may say that sometimes you will be required to work them. If your place of work is open on bank holidays, you may be asked to work some but, if your contract clearly says that you get bank holidays off, you shouldn't be asked to work them.

Your contract may say: "In addition to bank and public holidays, your annual holiday entitlement is x days." This means you get public holidays off in addition to your annual leave entitlement but might not mean you are entitled to take specific days off. You may be required to work on a bank holiday, in which case you should get another day off instead.

Alternatively, it may say something like: "Your annual holiday entitlement (inclusive of bank and public holidays) is x days." This means that you have to take bank holidays off as part of your annual leave allowance—so you'll have to book

all bank holidays as paid time off—or counted as additional holiday days.

A common misunderstanding is that employers have to pay you extra when you work a bank holiday. This is not the case unless your contract specifies otherwise. Your employer needs to stand by what is in your contract of employment. In the absence of a contract, the legal default position is that your employer can tell you when you can and can't take time off. If you wish to take a bank holiday off, you should request it in the usual way within your organisation. If this becomes an issue with your employer, you should try to resolve it via an informal chat in the first instance and, if that doesn't get you anywhere, raise a formal grievance. If you need help and

advice with this, please get back to us!

CA TNMWD is available on its free, local AdviceLine on 0808 27 87 999 or you can visit our website www.ruraldevoncab.org.uk and click on 'Get Advice'.

If you would like to help people unravel their problems, which can be many and varied, complex or straightforward, why not think about volunteering with us? You would have the opportunity to meet new people; you would receive ongoing training and support, and you would be making a major contribution to our local community.

Contact:
recruitment@ruraldevoncab.org.uk
for more information!



Coach Hire

At Upton Coaches we provide a quality coach hire service with a range of modern coaches seating between 16-57, please contact us for a quotation.

Airport transfers | London trips | Clubs & Societies

Day Excursions

We run an excellent range of Day Excursions!

National Trust properties | Shopping | Theatre | River Cruises | Gardens

Please contact us to request a brochure or visit our website for more details, we are also on Facebook and Instagram

Upton Garage

Cars, 4 x 4's & Light Commercial Vehicles

Please call to book your vehicle in

Servicing / Diagnostics / MOT preparation / Organise an MOT locally

Tel: 01398 371271 | email: coachhire@uptoncoaches.co.uk
| website: www.uptoncoaches.co.uk



Online survey


Avon and Somerset Constabulary and the Rural Affairs Unit are asking for your help - share your thoughts on the rural crime survey 2023 - it will offer valuable feedback about Rural & Wildlife crime across the force area.

Visit this website to take part.


<https://www.avonandsomerset.police.uk/forms/rcs>

Chris Flay
Plumbing & Heating Engineer


For Quality Workmanship
and Guaranteed Success



25 YEARS'
EXPERIENCE




Boiler Servicing & Maintenance
Rayburn Sales & Service
Gas, Oil and Solid Fuel Installations
Oil Tank Replacement - 24 Hour Service
Domestic or New Housing Enquiries Welcome



RAYBURN

STANLEY

A G A



OIL BURNER CONVERSION

NETHER STOWEY (01278) 732 732

The Arches, South Lane, Nether Stowey, Bridgwater

Philip J Milton
& Company Plc

North Devon's Leading Independent Wealth Managers

Wealth & Portfolio Management*

Wills, Trusts & Attorneyships

Probate & Estate Administration

Financial Advice, ISAs, Pensions*

*Authorised & Regulated by the Financial Conduct Authority

We are proud to offer a complete range of advice upon all aspects of your financial affairs with some of the most qualified and experienced staff in the Country.

Our clients are like family to us and every staff member is ready to go the extra mile

Find us on...





Choweree House, 21 Boutport Street, Barnstaple, Devon, EX31 1RP

www.miltonpj.net 01271 344300 info@miltonpj.net



Fish Passes at Bridgetown and North Molton

We draw supporters of the Dulverton Weir Project's attention to photographs of two fish passes recently installed at Bridgetown and North Molton under the project leadership of Westcountry Rivers Trust, who are, of course, Project Partners in the Dulverton Weir project.

Photographs of the Bridgetown installation show a retrofit fish pass using prefabricated technology fitted to an existing weir. Although the photographs do not reflect how Dulverton Weir will look they are useful because they show clearly the improved fish migration solutions envisaged at Dulverton Weir.



Bridgetown Weir



Bridgetown Fish Pass



Bridgetown Smolt Grill & Smolt Pass (to prevent Salmon Smolts entering the leat)

You can find out more about Westcountry Rivers Trust here: www.wrt.org.uk.

PAUL PRIEST LIME PLASTERING & STONE WORK



Lime Plastering and Stonework Specialist

- * Application of Traditional Plasters and Washes
- * Restoration and Conservation of old properties
- * Damp Management through the use of breathable materials
- * All aspects of Plastering and Stonework - both exterior and interior

Mob: 07870 454003

www.paullimeplastering.co.uk

NO VAT CHARGE ON LABOUR

"Trust in a specialist who is proud to put his own name to his work"

Different Steps

by Andrea Corrie

Many readers are familiar with Tarr Steps; an iconic Exmoor location, combining an ancient stone clapper bridge and a beautiful valley setting. It's somewhere we have visited several times, taking family and friends to enjoy a walk and a pit stop at the Tarr Farm Inn. Some of the stones were recently swept away in bad weather and repairs are due. This is not an unusual occurrence in the winter. It must be easier to correct the damage today than historically when mechanised equipment was not available.

I have a vertiginous problem crossing the clapper bridge at Tarr Steps. I think it is because the water runs and rushes underneath the stones and my mind can't process the movement beneath me. I feel as though I will lose my balance when I am walking on the stones. I can cross easily if I have someone to hold onto, as long as I keep my eyes fixed firmly on the other side. So at least I can do it!

I'm always happy to take photos on Exmoor and I love the quality of the late afternoon light on the water in the iPhone image. The sun was dropping quickly behind the trees; the reflected light on the water was beautiful. The shutter speed of the camera stilled the sinuous ripples round the stones and the people on the bridge introduced a splash of colour.

In November 2022 I was pondering a choice of images to paint in my art class. Gill Erskine-Hill, our teacher, saw my Tarr Steps photo and asked if she could paint it herself. Gill is a skilled, experienced artist who has a wonderful knack of capturing the balance of landscape, light and water. "All my favourite ingredients are there in your image, please may I paint it?" she asked me. Of course, I was happy for Gill to paint the picture.

A few weeks later, Gill had completed working her magic on the canvas. The tranquil beauty of the scene is enhanced by Gill's expertise in conveying the essence of the light, the reflections and the softness of the sun glowing through the trees. The people crossing the bridge are omitted; now the eye has uninterrupted passage across the bridge to the other side. The water looks gentle and calm. There are traces of the underpainting that is a trademark of Gill's work: she uses a dilute mix of French ultramarine blue and raw sienna shades of paint as a 'wash' onto the canvas. She then begins to pick out the features which enhance the photographic detail that she replicates faithfully with the skill of her brushwork.

To my mind, my photograph simply captures a moment in time. Gill's further exploration and interpretation of the overall view gives the whole a deeper atmosphere. Gill's skill in translating my image into her oil on canvas painting exemplifies the winter light at its best: smooth, mellow and peaceful.

Gill sells her work via the Lantic Gallery in Tiverton.

Bampton-based Andrea is the author of two grief support books:

Into the Mourning Light (2014, paperback and e-book)

Living in the Mourning Light (2019, paperback, e-book and audio)

She also writes a Wordpress blog entitled *Multilayered Musings From the Mourning Light*





EXMOOR
NATIONAL PARK

Exmoor National Park—protecting the future of our trees

By planting just one tree on available land, you can help offer a healthier future for our woodland.

Thanks to an intensive study using detailed National Tree Data, Exmoor National Park has intricately mapped the tree canopy within our local landscape and the number of non-woodland trees in the area. The project found around 1.5 million trees in hedges and around 500,000 in fields across Exmoor.

After careful analysis, the study also revealed vital information about the type, age and diversity of our trees and the fact that there are prime spots for tree planting outside woodland areas. The study showed that, while there has been great work done so far in tree planting, more is needed outside the woodland to replace those suffering from disease or climatic stress, nearing the end of their lives.

Analysis has shown that nearly half of English neighbourhoods have less than 10 per cent tree cover, with lower income areas having far fewer trees than wealthier ones. England's tree cover is just 12.8 per cent, according to research, with only 10 per cent made up by woodland, in comparison with the EU, where woodland cover stands at 38 per cent. The government aims to increase tree cover to 16 per cent by 2050, under plans to reach net zero and protect biodiversity. Having more trees in your local area is also beneficial for health and wellbeing, according to the UK Health Security Agency.

Exmoor National Park Senior Conservation Officer, Graeme McVittie, said: "Trees outside of woodlands are often in the farmed landscape, so it's a positive for farmers' activities and something they can help with and benefit from. We want to thank farmers for their continued efforts in including tree planting on their land, showed in the data we found in our treemapping project.

"But trees outside of woodland can be any tree in a field, hedge or even just on homeowner land. We want to appeal to anyone with a bit of space to help us continue the good work done so far and there are incentives to help with that. Trees are subject to the effects of disease, age and climate change and eventually need replacing to keep that sustainable tree canopy.

"We can all get involved. It doesn't have to involve huge effort our outlay. Even the addition of one tree to a field can make a real impact if it's well looked after and allowed to reach its full mature size."

There are many national organisations and schemes supporting local tree planting. If every house, farm, business, local club or village green planted just one tree, we could see a significant impact of the future health of our tree canopy. Every single tree counts.

Get in touch with us to find out what grants, advice and help are on offer if you have space to plant a tree.

For more information contact:

Graeme McVittie: rgmcvittie@exmoor-nationalpark.gov.uk or

Robin Offer: roffer@exmoor-nationalpark.gov.uk





landscape services
www.tjlandscape.co.uk

Garden Design & Landscape Construction
 • Fencing • Patios • Paths • Ponds
 • Decking • Stone Walls • Turfing

Tim Jackson
 31 Lower Meadow Road,
 Minehead, Somerset,
 TA24 6AW

mob. 07748644376
 email. tim@tjlandscape.co.uk

Roy
Hart
Computers

01884 257288

chris@rhcomp.co.uk

computing without tears!

We can offer the **right** solution for the **first time & experienced** user

Is your computer running slowly?

Contact **Chris** for a MOT & service to keep it in tip top condition

New Systems ● Upgrades ● Virus & Problem Solving

Wifi, Broadband and Smart TV connections

FAMILY FIRM SUPPORTING COMPUTERS IN YOUR HOME SINCE 1981



HEADSTONES MEMORIALS
INTERMENT PLAQUES
 Hand carved in Dulverton



LAURENCE BECKFORD

7 JURY ROAD, DULVERTON TA22 9DX

0772 4452 961 01398 323746

www.beckfordsartworks.co.uk

laurencebeckford@hotmail.com



Message from ENP...

We are currently undertaking a review of the Exmoor National Park Partnership Plan, and we'd love to have your input!

As a National Park Authority, we work in partnership with the community, local councils, businesses and other organisations to look after the National Park and promote its conservation and enjoyment.

We want to ask all those with an interest in Exmoor - whether you are a local resident, business or visitor how you think things are changing on Exmoor and what you think are the key issues and opportunities to address over the next 5 years.

Visit www.exmoor-nationalpark.gov.uk and follow the link at the top of that page to the Partnership Plan review.



Serenity Healing Hub

With Ndivhuwo (Dibuor) Nedzanani—
DipST, BSR

Spinal Touch—A gentle yet powerful remedial bodywork that realigns the body's centre of gravity to enable it to heal itself by releasing tension, trauma and pain using body mechanic techniques that correct, balance and realign the spine, posture and body energy. It is applied with very light, soothing touch.

Backache and Musculoskeletal problems?

Spinal Touch may be the answer to your problems. As a non-force treatment, Spinal Touch resolves distortion by means of light-touch muscle relaxation. This approach to treatment can increase the level of well-being and overall health. It involves no "bone-cracking" or twisting or lotions and creams, so it can therefore be of value to everyone, regardless of age.

It can have a direct and beneficial effect on any person regardless of what symptoms of ill health they may be exhibiting. It is a non-manipulative, holistic treatment, which has a general life-enhancing effect.

There are no contra-indications to the treatment. It can be combined with any medication or treatment. In fact, it will enhance the benefits of these, especially if they are natural therapies. As it is so gentle, it can safely be used on children, the elderly and pregnant women.

Who can Spinal Touch help?

Although it is best known for helping with back ailments and associated disorders, Spinal Touch can be of benefit in a far wider range of conditions. It is especially effective in conditions that are stress-related.

Patients with the following conditions have been helped by Spinal Touch: back pain, balance problems, digestive problems, fatigue, frozen shoulder, headache, infertility, joint pain, low energy and fatigue, lumbago, menstrual problems, migraine, multiple sclerosis, neck pain, pins and needles, problems during and after pregnancy, recurrent infections, repetitive strain injury, scoliosis, sciatica, sinus problems, sports injuries, tennis elbow, tension, visual disturbances, whiplash injury.

Appointments available: Monday-Friday

For more information and appointments contact: Dibuor at 07805 222 786 or serenityhealinghub@gmail.com

SERENITY HEALING HUB

With
Ndivhuwo (Dibuor) Nedzanani
DipST, BSR

Do you suffer from back, neck or muscle pains?

These treatments can help:

Spinal Touch
Bio-Stress Release
Reiki Healing
Massage



Appointments available

Monday - Friday

Call: Dibuor

07805 222786

serenityhealinghub@gmail.com

I love working with people and I am looking forward to helping you.

Serenity Healing Hub, Studio B,
27 High Street, Dulverton, TA22 9DJ

S.S. ROOFING EST 30 years SPECIALISTS

Roofing & Leadwork Specialists

Slating - Tiling - Leadwork - Flat roofing - Cedar shingles - Chimney works - Fascia/soffits & Guttering

Residential - Domestic - Conservation - Heritage - Listed

“A Company Built on Craftsmanship”

All sizes of projects.



01884 252768 ssroofingspecialist@hotmail.co.uk www.ssroofingspecialists.co.uk

Books Bought

*Local-interest
Countryside &
Country-Sports
Book Collections
especially wanted.*



*Also Academic and general
libraries bought.*

Valuations undertaken

**Rothwell &
Dunworth**

Tel: 01398 323169

Email: info@rdbooks.co.uk



COME AND VISIT US

We are a traditional long established Artisan Bakery with our own dedicated team of chefs. We (probably) sell the Best Pies on Exmoor but have a range of savoury and sweets. Try our Apple Pies or Chocolate Roulade and do not miss our world-famous Doughnuts and spectacular iced cakes.

Like our pies why not join our pie club loyalty card.

We can produce special orders for occasions and events.

Celebration cakes ordered on request.

We are able to post our cake slices including our scrumptious Brownies, Bakewell tart and Exclusive Fruit and Nut to anywhere in the UK.

We are easy to find, being a short walk along Northmoor Road about 400 yards to the North of the Town Square. There is limited parking outside

41 Northmoor Road, Dulverton, TA22 9DH
01398 324131 - hello@exclusivecakecompany.co.uk

Find us on Facebook and Instagram

www.exclusivecakecompany.co.uk

Open: Monday to Friday 7.00am to 3.00pm

Saturday 9.00am to 3.00pm

New Shop opening in Brushford in the Spring – watch this space!

Exmoor landmark sign's missing finger sought...

The finger from one of Exmoor's historic signposts is missing and the National Park Authority is appealing for its return.

Many visitors admire Exmoor's iconic cast-iron signposts and they are now a source of local pride. But a few years ago, many had become dilapidated and broken—until a project led by the National Park Authority and Somerset County Council, with an army of volunteers from local parishes, enabled the restoration of 140 signposts.

Following significant damage to two highly important signposts and ongoing maintenance costs, the authority is now hoping to raise at least £3,000 through its CareMoor donations scheme in the coming months. One of the damaged signposts is located at Webber's Post and the finger that should direct people to Somerset's highest point, Dunkery Beacon, as well as Wheddon Cross—where the famous Snowdrop Valley is based—is now missing. The second signpost, which was vandalised and needs significant repair, is located at Withypool.



© Exmoor National Park

Historic Environment Officer for the National Park Authority, Shirley Blaylock, said: "The cost of replacing the finger on one these historic signposts is around £1,000, as each one is unique and needs to be specially cast in a foundry. If anyone knows where the Dunkery Beacon finger is please let us know, as it can take hundreds of pounds off the cost of repair, even if broken. We'd like to offer an amnesty with no questions asked, regarding missing parts from any of our signposts."

The authority is also appealing to parish councils for help.

"Brushford Parish Council helped cover the repair to a post in its area," added Shirley, "and we know that parish councils and residents everywhere are as proud of Exmoor's historic signposts as we are. There are currently at least 20 in need of repair."

Exmoor's Volunteer and Outreach Officer, Patrick Watts-Mabbott, said: "Donors to the appeal can have the satisfaction of contributing to an important part of Exmoor's heritage, as well as a vital part of our rural road network and local community pride. Funds are needed not only to pay local contractors to repair occasional damage and vandalism like this but also to get the specialist paint and safety training for volunteers to work on the highway. The volunteer team are key to the repainting and keeping Exmoor's unique and historical signposts looking their best.

"Initially the project to replace and repair the signposts was funded by the National Lottery Heritage Fund but we now need to ask the public to help us. Whether you can help us find missing fingers or finials, donate to the CareMoor appeal, or join our team of volunteers, we'd love to hear from you".

To donate or find out more about the appeal, contact Patrick Watts-Mabbott on: 01398 323665 or visit: www.exmoor-nationalpark.gov.uk/CareMoor



Exmoor Open Water Swim welcomes dryrobe® sponsorship

Exmoor Open Water Swim is delighted to announce dryrobe® as its main headline sponsor. The original outdoor changing robe, dryrobe®, is designed to let you get active outdoors, whatever the weather. Worn by athletes and mere mortals alike, dryrobe® is now just as a familiar sight on a beach as it is on the backs of the elite athletes at sporting events around the world.

Tickets are now on sale (see below) for this year's Exmoor Open Water Swim, which takes place at beautiful Wimbleball Lake on Sunday 24 September. Since its inception three years ago, the event has become a firm fixture in the open water swim calendar; its goal is to give everyone the opportunity to swim in this incredible setting in the heart of Exmoor.

Distances include 6km, 4km and 2km and swimmers, in a wetsuit or skins, will loop the lake once, twice or three times respectively. While there are medals for those who come in the top three for their age groups, the majority of swimmers will simply be challenging themselves to participate in a safe and friendly open-water swimming environment.

Last year saw the introduction of a new, non-competitive 1km course—a truly accessible swim distance for all ages, experiences and abilities. This is the perfect course for those who are just getting into open water swimming or for those coming back to the sport.

In contrast, the 6km elite course is for those looking to really challenge themselves. They will swim three laps of this stunning 2km course but must be able to swim at the faster pace of less than 28 minutes per mile equivalent in a pool to participate.

As well as a new headline sponsor, the event is now under new ownership. Environmental charity, Plastic Free North Devon, has recently taken over the running of the Exmoor Open Water Swim and its sister event, the Croyde Ocean Triathlon.

Event Director for the Exmoor Open Water Swim and Croyde Ocean Triathlon, Jo Hibberd, comments, "The Exmoor Open Water Swim is a really inclusive event, whether you're swimming the 6km or the 1km, there's a challenge to suit you. The atmosphere on the day is like no other sporting event I've been to; the smiles as participants emerge from the water say it all. We are proud to be the new custodians of the Exmoor Open Water Swim and delighted to announce our association dryrobe®. With dryrobe® on board as our main sponsor, we are looking forward to growing this event and are committed to rising to the challenge of creating a more environmentally sustainable event as each year passes."

The Exmoor Open Water Swim, in association with dryrobe® and the event's other sponsors, 79 Group and Ninety One, is also delighted to announce that 100 per cent of the profits from the swim and the Croyde Ocean Triathlon will go to charity.

Details and ticket sales: www.exmoorswim.co.uk/





Open water swimming events benefit charities

Local environmental charity, Plastic Free North Devon (PFND), is excited to announce that, with the help of amazing sponsors, it is now the proud owner of the beautiful and challenging Croyde Ocean Triathlon and sister event, the Exmoor Open Water Swim. As well as building on the events' notable sustainability credentials and continuing to foster the passionate and welcoming community they are renowned for, 100 per cent of the profits from both events will go to charity.

The seventh annual Exmoor Open Water Swim takes place at Wimbleball Lake on 24 September 2023. The team at PFND will be working hard to welcome up to 1,000 competitors to the lake to take on the challenge of a 1,2,4 or 6k swim and maintain the community-minded and friendly spirit the swim is so well known for.

The team are looking for local coffee carts or catering vans that might like to take up the opportunity of a spot at the lake's Race Village on the day. Contact Race Director, Jo Hibberd, at: info@exmoorswim.co.uk

www.exmoorswim.co.uk/
www.croydeocean.co.uk/



We are a small local law firm offering an affordable alternative to high street firms.



***For Family, Matrimonial and Children matters.
For Wills, Lasting Powers of Attorney, and Probate.***

Call,
Email,
Or go online.



Tel: 01643 802278 ~ 07951 054915
Email: info@hollamsolicitors.co.uk
Web: www.hollamsolicitors.co.uk

Making time for you to enjoy life



Providing support and housing for older people at Abbeyfield House, Dulverton

Please call **01398 324136** for more information

Abbeyfield

Dulverton Society
Making time for older people

Registered National Office: The Abbeyfield Society, St Peters House, 2 Bricket Road, St Albans, Hertfordshire AL1 3JW

FOUR SEASONS

PROFESSIONAL TREE SERVICES

All Aspects of Tree Surgery
 Stump Removal
 Crown Lifting Crown Reduction
 Grounds Maintenance Grass Cutting
 Hedge Cutting All types of Fencing
 Wood Chip Seasoned Logs
 General Garden Maintenance Turfing
 Fully Insured Private & Commercial Customers
 Soft Landscaping and Planting
 Free Quotations

www.fourseasons-treeservices.com

Oliver Vernon

info@fourseasons-treeservices.com

01884 563021/07766168162



Need your Chimney swept or thinking of having a Log Burner fitted?

It could be damaged or blocked with birds nests. If so it could be a fire risk and may lead to deadly Carbon Monoxide fumes leaking into your home. Now is the time to get it checked.

We cover North Devon, West Somerset, Exmoor, North Cornwall. We have full Public Liability Insurance and certificates are issued to confirm work.

The services we provide are:

- Full sweeping service to all chimneys including Rayburns, Agas and Stanleys
- H.E.T.A.S. registered installer of Wood and Multifuel burners.
- Service and repairs
- Gas and smoke detectors supplied and fitted
- Chimney stack repairs
- Supply and Fit all types of Cows, Bird guards and chimney pots
- Landlord & holiday home owner solid fuel appliance safety checks issued.



Follow us on our Facebook page for more information and advice



Call to arrange a no obligation site visit

www.phoenix-chimneys.co.uk

01271 855543 / 07956 866593

Mike Whittaker CARPENTRY

ESTABLISHED 1989

All aspects of Carpentry work undertaken

LOCAL & RELIABLE

Including:

- FITTED KITCHENS
- BUILT-IN WARDROBES & SHELVING
- INTERNAL & EXTERNAL DOORS
- WINDOW & DOOR FRAME REPAIRS
- REPLACEMENT WINDOWS & DOORS (TIMBER/UPVC & ALUMINIUM)
- DECKING/BALCONY CONSTRUCTION
- BESPOKE SUMMER ROOMS OR OUTBUILDINGS CONSTRUCTED
- EXTERNAL CLADDING



CALL FOR A FREE QUOTATION

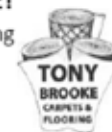
T: 01398 322872 | 07831 276750 | 07860 108345

E: mikewhitts66@gmail.com

TONY BROOKE CARPETS & FLOORING

CARPET ■ VINYL ■ FLOTEX
 NATURALS ■ SAFETY FLOORING
 LVT ■ RUGS ■ RUNNERS ■
 MATS & MORE!

- Free estimating and planning
- Expert advice and fitting
- Over 25 years' experience
- Home-choose service
- Re-stretches, re-adaptions and repairs
- Great deals on roll stock and remnants
- Already bought a carpet? We'll fit it!
- **Price Promise** - we won't be beaten



Tel: 01984 632206

MOBILE SHOWROOM -

WE BRING THE SAMPLES TO YOU!

Based at Roughmoor Industrial Estate,
 Williton TA4 4RF

www.tonybrookecarpetsandflooring.co.uk



THREE ATOP WOODLAND SERVICES

-  WOODLAND MANAGEMENT
-  FORESTRY
-  ARBORICULTURE



07547550842
INFO@THREETOP.CO.UK

SIMONSBATH SAWMILL - THE FUTURE OF YOUR TIMBER

TURN YOUR TREES INTO USEABLE WOOD
TIMBER CUT TO ORDER
HISTORIC TOURS AND EXPERIENCES

WWW.THREETOP.CO.UK



Remote Therapies

Beauty & Wellbeing Clinic


A beauty salon situated just 1.6 miles from the historic charter town of Bampton, on the outskirts of Shillingford. Here at Remote Therapies we offer a range of treatments to suit all.

- ~Waxing
- ~Eye Treatments
- ~Eyelash Extensions
- ~Manicures & Pedicures
- ~Spray Tanning
- ~Gel & Acrylic Nails
- ~Dermologica Skin Care
- ~Massage
- ~CryoSthetics
- ~Treatments for Men

Free onsite parking

T: 07845 925907 E: remotetherapies@gmail.com W: www.remotetherapies.co.uk

Unit 2d, Fourwinds, Shillingford, Bampton, Tiverton, Devon, EX16 9AU

N. H. Hopkins

General Builder

All Building Work Undertaken

Tel: 01398 323687

Mob: 07790 711 125

Nature's Philosophy

Nocturnal birds in sibilant causerie
 Forest creatures in distant revelry
 While nature's blanket dims their rivalry
 And stills the air to peaceful reverie

How brief is this tranquility
 As hostile meetings in darkened shrubbery
 Remind, if only momentarily
 That man alone enjoys in camaraderie

Victor Timmons



WOODCOTT

Building Services & Property Maintenance

All house and garden work undertaken

Tel: 01398 322981 Mobile: 07960 944964

Email: woodcottbuildingservices@gmail.com

Contact Martin for a quotation Smaller jobs always welcome



Mary Wilkinson
McTimoney
Qualified Practitioner
DC AMP RAMP

McTimoney Animal Chiropractor
Horses, Dogs, Cats, Farm Animals

GENTLE, WHOLE BODY TREATMENT
for SPINAL RELATED PROBLEMS

- Back Pain •
- Sciatica •
- Neck & Shoulder •
- Whiplash & Headaches •

Higher Putham
Wheddon Cross TA24 7AS
marywilkinson.therapy@gmail.com
Tel: 01643 841660 07949 082598



Exmoor BookBinding

01643 841116

sarah@the-burns.com

Repairs & Restoration to
all your favourite books.



Albums, Folios
Scrapbooks &
Journals
made to order.

Exmoor Fish & Chips



Dulverton High Street
OPENING HOURS

Monday	CLOSED
Tuesday	4.30-9pm
Wednesday	4.30-9pm
Thursday	4.30-9pm
Friday & Saturday	} 11.30-2pm
Saturday	} 4.30-9pm
Sunday	CLOSED

Phone Orders
07904 937956

Under new management



How do I make contact?

Tel: 07395 171409 10am-4 pm, Monday-Friday

Who is the scheme for?

The aim of the scheme is to bring together those in need of help and support in the Dulverton community with local volunteers able to offer their time.

How does it work?

We have a co-ordinator who will receive all requests for help on our dedicated phone line. The co-ordinator will then phone round to find a Good Neighbour volunteer able to help. If you can offer volunteer help, please ring the helpline.

Fridge magnets

We have fridge magnets that can be a useful reminder. These are available from Hanover House, the Post Office in Dulverton, Copper Kettle, Isis and How's the Hair (all subject to availability). If you would like a fridge magnet posted to you, please email dgn@btinternet.com



Pictured above – Ron and his DGN volunteer.

Another couple recently needed help when the husband moved into Hanover House and the wife needed a Saturday lift to visit her husband, as she doesn't drive. There are five volunteers who participate in a rota to deliver the wife to Hanover House and take her home again after the visit.

To give you an idea of what we do

During Covid Dulverton Good Neighbours (DGN) was established and plenty of help was given to the community by people who were forced to stay at home. For example, shopping, dog walking, collecting prescriptions amongst others.

Hanover House in Dulverton is one of our most visited locations. One of our volunteers makes a weekly visit to a resident and has been visiting since late September 2021 when the couple were initially living in their own home. Ron and his wife moved to Hanover House in 2022 and visits continued. Sadly, Ron's wife died in late 2022. They had been married 70 years on the day of the Queen's Platinum Jubilee. Ron continues to live in their flat at Hanover House.



E: exmoornews@gmail.com
T: 07497 914441
W: www.exmoornews.co.uk



Plastering
Stonework
Extensions
Groundworks
Treatment plant installation
Renovations
New Builds
Lime Plastering
Restoration

t: 01398 323 745 m: 07833 376 737 www.lcbuildingcontractors.co.uk

Can you help Exmoor's young self builders?

Exmoor Young Voices is supporting young people on the moor interested in building their own affordable homes. Our biggest challenge so far is finding building land. So we're appealing to all landowners on Exmoor and asking you if you would be willing to sell a parcel of land to a local family. We encourage you to show your generosity and do your bit to support the next generation on Exmoor, enabling young people to continue living where they call home.

Selling land at an affordable rate isn't the only way you can support the EYV Self Build Project. We're also keen to hear from those willing to contribute building materials, share their skills, loan heavy equipment and tools, or even help fund individual builds when they hit financial barriers.

Young people are vital to the future of Exmoor. We need them, but right now, they need you.

Contact EYV Coordinator Megan Hunt if you can help in any way:
exmooryoungvoices@hotmail.com



Suzi Koszler-Allen Consultant Private Client Solicitor

M: 07792632404
T: 01398 310 057

DDI: 0330 058 4012 ext: 2414
E: skoszler-allen@setfords.co.uk

There are milestone moments in life that require much more from your legal representative than experience alone. I am Suzi Koszler-Allen, a practising solicitor since 2008 specialising in private client work, an area of law that I am passionate about.

My goal is to provide you with the kind of efficient and responsive legal advice and support you would expect from a solicitor with 15 years of experience, combined with a high level of personal service and a desire to gain a thorough understanding of your specific needs.

My specialist areas of law are:

- Wills
- Powers of Attorney
- Court of Protection
- Care Home Fees
- Grant of Probate
- Estate Administration
- Inheritance tax
- Trusts

While I operate mostly regionally across the Exmoor area, I have access to the national Setfords network of more than 400 solicitors, and so I can put you in touch with a solicitor who can help you with any other legal requirements you may have.

Please call me today to discuss your needs.



Dan Stone Accountancy CHARTERED ACCOUNTANT

- Sole Traders, Partnerships and Limited Companies
- Accounts and Tax Returns
- Business Start Ups
- Making Tax Digital Support
- Charities and Not For Profit
- Payroll • VAT

Contact Dan for a free initial consultation

Tel: 01643 800301 Mobile: 07970 304179
info@danstoneaccountancy.co.uk
www.danstoneaccountancy.co.uk



Charming Grade II-Listed farmhouse in an idyllic setting close to Exmoor

Hill Farm is a Grade II-Listed farmhouse which has lovely rural views and sits above a traditional courtyard of stone outbuildings. The property has been greatly enhanced, retaining many period features, and offers a very comfortable and beautifully presented four-bedroom farmhouse. Attached to the main house is a one-bedroom annexe which can be completely self-contained or easily incorporated as part of the main house.

Freehold. Council Tax: F. Guide £1,200,000

For more information contact Stags Dulverton office on 01398 323174 | dulverton@stags.co.uk



FS FRIENDSHIP & SONS FUNERAL DIRECTORS

— Est 2013 —

An independent Funeral Directors dedicated to providing the highest levels of compassion and care to bereaved families 24 hours a day

- Private Chapels Of Rest
- Traditional & Bespoke Funerals
- Funeral Plans from Golden Charter
- Direct Cremations from £995.00
- Home Visiting Service
- Floral Arrangements

For advice and guidance 24 hours a day please contact us

Dulverton Office - 01398 324590

29 High St, Dulverton, TA22 9DJ

South Molton Office - 01769 358101 -

2 George Arcade, South Molton, EX36 3AB

www.friendshipandsons.co.uk

Guided Walks May 2023



For information and booking visit exmoorsociety.com



May Walks

4 th	The Chains
9 th	Yarner Farm walk – stone walls and multigenerational farming
10 th	Burridge Woods Bird tour – visit the nesting boxes with a member of the BTO
12 th	Badgworthy - sheep stells and stone circles
14 th	West Ilkerton Farm and Ilkerton Ridge (this is an accessible walk)
22 nd	A history of Woody Bay, nr Lynton
25 th	Porlock's Coastal Wildlife - May



Guided Walks June/July 2023



For information and booking visit exmoorsociety.com



June Walks

14 th	Ley Hill Medieval Settlement
16 th	Hawkcombe Nature Reserve Butterfly Walk
22 nd	Hope Bourne in Withypool
29 th	A moorland archaeology walk

July Walks

19 th	photography walk and talk - Bossington Hill and Allerford Plantation
27 th	Porlock's Coastal Wildlife - July



THE EXMOOR SOCIETY PINNACLE AWARD 2023

An award of up to £5,000 is available for business development costs for people aged between 18 and 35 who live, work or study in Greater Exmoor

The Pinnacle Award was set up in 2011 by The Exmoor Society to support young entrepreneurs with businesses on Exmoor. As a conservation charity we want to show how beautiful landscapes and successful businesses can work together and help young people make successful lives on the moor.

Previous winners include:



Nick Hosegood
Three Atop Woodland Services



Oliver Hill
Hillbilly Haircuts



Tom Lile
Artisan Blacksmith

Apply now!

info@exmoorsociety.com 01398 323335 www.exmoorsociety.com

Closing date 1st June 2023



Guided walks on Exmoor

Learn more about the history and natural beauty of Exmoor on one of our series of guided walks, expertly led by volunteers. The walks range in length from one-two hours and are free to join, with donations welcome towards our CareMoor for Exmoor scheme. Walks run throughout the spring, summer and early autumn, until late October.

A Walk through Dunster's History

Join a guided walk leader and explore the picturesque landscape village, Dunster. A two-hour walk around a village steeped in history.

Dunster Outback Walk

Join a guided walk leader and explore the picturesque landscape around Dunster.

A two-hour, four-mile walk, taking in the historic sites of Dunster village and the breathtaking views above the village from the ancient hill forts of Grabbist Hill and Bat's Castle.

Lynmouth Flood Walks

On 15 August 1952 a huge flood hit the tranquil village of Lynmouth. Join a guided walk around Lynmouth to hear all about how this event unfolded and how it changed the village and the lives of those who lived there.

Guided Bird Walks

Discover more about Exmoor's birds on one of our seasonal guided bird spotting walks, led by an experienced volunteer. Suitable for beginners and those with some knowledge of birds.

You can find full details, including dates, times and booking links for all the above walks, at Exmoor National Park Authority's Eventbrite page: www.eventbrite.co.uk/o/exmoor-national-park-authority-59110586823

Hidden Porlock

25 April 10.00am-12 noon

A two-hour guided walk around the village. Visit sites of historic interest and explore hidden parts of the village's past.



Walking Group

Dulverton Health Walks

This very friendly group meets every Tuesday at 10am, to walk at different places. Walks last an hour or two, through our wonderful countryside. They are not particularly difficult and we stop every now and then to catch up and also to appreciate the beautiful landscape.

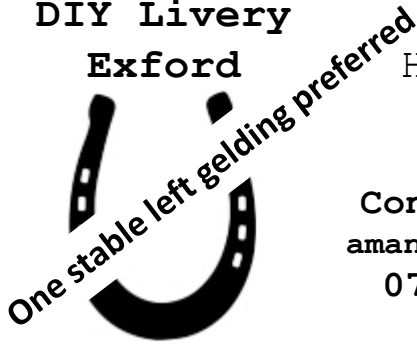
We would be delighted to see new people, so if you feel you would like to join us then please contact either: Richard Clarke on 01398 341141 or email: richardclarke567@btinternet.com or Richard Archer on 0777 3160 222 or email: archerr@hotmail.co.uk

The photo shows the walkers on the Swan's Neck Bridge, Tiverton Canal.

For more information and bookings, call Porlock Visitor Centre 01643 863150



**Riscombe
House
DIY Livery
Exford**



Small friendly yard

All year turnout

Secure tack room

Excellent lighting

Hacking from the
door

Contact: Amanda Howard
amanda.howard@hotmail.co.uk
07792 640818 / 01643
831553

Exmoor

The grey clouds of the evening storm,
rolling forth from the sea.
Tumbling over emerald hills,
to fill the valleys with a ghostly mist,
that bringing a silents there to be.

And the air a deathly stillness holds,
all sounds to earth falls like a stone.
And in this damp and silent world,
one may find a place,
where one may walk ,and be alone.

Nothing moves while hours pass,
save where the moorland ponies graze.
The mist rises up before their steps,
and like a veil does fall behind,
to guard, and hide them from one's gaze.

And in this world of loneliness,
where beauty is hidden when first
one looks.
Where the sun does fall in a silver set,
upon this land of mist that's yet,
A land of rolling moors,and falling
brooks.

J Matthews, 72



Look Wild Events

Our Look Wild events offer a great opportunity to discover Exmoor's amazing range of landscapes and wildlife that depends on them. Guided walks and talks, introductory Discover events, training and survey opportunities, there's something for everyone. Check website for programme details.

<https://www.eventbrite.co.uk/o/exmoor-national-park-authority-59110586823>

DAN PASSMORE All aspects of garden maintenance

- Grass cutting
- Strimmer work
- Hedge cutting
- Garden clearance
- Garden Tidy up
- Landscaping
- Driveways, Patios and Paths
- Garden gates and Fencing

For a free quote please call: 01643 831842



Festival of British Eventing GATCOMBE



Sunday 6 August 2023

Ridlers 49-seat Executive Coach

Transport Exmoor return via Williton

£39 includes entry to Gatcombe and return travel

(Accompanied children 12 years and under free of charge Gatcombe entry)



**Book
NOW!**



Exmoor Pony Society Gene Bank Campaign

Award-winning registered Exmoor pony stallion, Elsinore Alan Partridge, (affectionately known as Q after the *Star Trek* character) will be the first pony to donate genetic material to a new initiative aimed at safeguarding the future of the iconic breed.

Britain's oldest native breed faced extinction after WWII, with just 50 ponies remaining. Under the guardianship of registered charity, the Exmoor Pony Society (EPS), numbers of registered ponies have climbed to around 4,000.

However with only 600 actively breeding ponies and a very small gene pool, the Exmoor is still classed as "priority" (formerly "endangered") by the Rare Breeds Survival Trust—making the breed extremely vulnerable in the event of a disaster, whatever that may look like (climate, virus etc).

A new initiative from the EPS (developed with its Scientific Advisory Panel) will create a cryogenic gene bank, a lifeline that could prevent extinction in the event of a catastrophe. But it's complex, onerous and expensive. The EPS has contributed £50,000 to this innovative project and is campaigning to raise another £50,000.

www.exmoorponysociety.org.uk/



Dr. Sue Baker and Nigel Hill. (Credit: Exmoor Pony Society)

Contact Carole Woods, The Farmers Den, Exford
01643 831151 carolecwoods@aol.com or
Gwenda Bassett 07900 837183

A Dog's Day Out – The Pekingese Tells One

Roll out the green carpet - spring has sprung and party season is back. Yippee! We should be getting our first invitations soon. Crufts has been and gone. Did you know it's televised globally now, Honey?

"How do they get their bodies to shimmer and shine like that Buddy?"

It's a camera lighting trick. Television operators with spotlights follow the competitors round the ring and they've had their bodies smothered in loads of hair gloss in make-up before they go on.

"Oh my, I didn't know that but I do know that I would suit the burnished copper colour. It's so me. Did you see the picture in the newspaper of the Afghan? He was stunning—his hair simply flowed as he ran around."

I don't know whether you've notice, Honey, but we don't have any hair to flow. In party circles we're known as the smoothies. You could of course cultivate your smile. It's a winner. Everyone we meet is blown away by it. It could be the answer to the first step on climbing your social ladder. I remember before I met you going to a party hosted by a Peke. She wasn't a great looker but boy she could crack a good story. She had us all in stitches—we

were crying with laughter. Have you heard the one about the Scottish sheltie, the Irish terrier and the old English bulldog walking into a bar to order a drink? The barman looks down at them and says, "Is this meant to be some kind of a joke!?" Ha ha, he he!

"Oh stop it!"

Look at her calendar, Honey. What is it today? "Worm the dogs". The day, Honey, is Friday. See next weekend? It's a bank holiday and we should be off to see cousin Percy and meet his new girlfriend. She's a Maltese.

"I ought take her a welcome-to-your-new-home gift then and give her my big smile." Perc says she's tiny with loads of hair—a bit scruffy like him.

"I'll order her some tartan bows—they were all the rage at this year's Crufts—and get myself some liver-flavoured toothpaste at the same time."

Good idea.

Buddy Brown (pure Jack Russell), a roving reporter

In memory of my terrier friends, Millie and McCoy, who sadly passed away earlier this year.



A guide for dog owners and walkers

Dogs and Open Access Land

Across Somerset, there are approximately 16,300 hectares of moor, heath and down that are designated as Open Access Land. Your dog can accompany you on your walk across these areas provided:

- * It is kept on a lead of no more than 2m long between 1 March and 31 July. This will help prevent your dog disturbing ground nesting birds; and
- * You keep your dog on a lead when approaching livestock.

Owners of Open Access Land can apply to Natural England for a restriction to exclude dogs. Normally, restrictions are only granted where a landowner has demonstrated dogs need to be excluded to protect wildlife or for land management purposes.

Further information about restrictions can be downloaded from: www.openaccess.gov.uk.

If your dog isn't able to accompany you across Public Access Land, don't worry, you can still take your pet for a walk along any nearby public right of way.

Working and farm dogs

Farmers and landowners also have a responsibility to ensure their working dogs and pets are well controlled. Aggressive, protective or loose dogs can be very intimidating. In extreme cases, your dog may scare people to the point they double back on themselves rather than continue on their walk. Worse still, your dog may attack a well loved pet or seriously hurt someone.

We ask all landowners to do everything

Cont/...

they can to make sure their dogs are kept under close control at all times. After all, you can never tell when someone might be using a public right of way crossing over your land or through your farm. www.somerset.gov.uk/somerset/rightsofway; www.thekennelclub.org.uk

Dog poo.. Did you know...?

There are over 7.5 million dogs living in this country and they produce over 10,000 tonnes of poo a week – enough to fill four

Olympic-sized swimming pools. It is anti social not to clear up after your dog and if you're caught leaving dog poo behind in a designated area, you could be served with a fixed penalty notice.



Online business directory for Exmoor launched

A brand new online directory of businesses in and around Exmoor National Park has been launched as part of the Rural Enterprise Exmoor initiative, which seeks to retain greater community wealth in the area.

The website (see below) already has over 200 listings, with other businesses from all sectors urged to sign up for free.

"Developing an easy-to-use online directory of businesses operating within the National Park has long been an ambition shared by businesses and stakeholders alike to support our rural economy," says Rural Enterprise Manager, Dan James.

"We hope that the directory will become the first port of call for anyone looking for a business or service, supporting others in the area, and I encourage every business to upload their details as soon as possible.

"Through Rural Enterprise Exmoor we aim to develop strategies to benefit business right across the board, while conserving the special qualities of the National Park. The directory therefore highlights those businesses contributing to the work of the National Park—either as Park Partners putting the National Park at the heart of all they do, such as CareMoor for Exmoor Champions, raising funds for conservation and access work or, as Dark Sky-friendly businesses. We want to celebrate these businesses for going the extra mile for our protected and much-loved landscapes, while working closely with other businesses and local communities."

*www.directory.exmoor-nationalpark.gov.uk





Travels from Dulverton: chapter 5

It's certainly been a wet start to spring; the rain has been relentless. It's been raining consecutively for the last 12 hours as I write; my inner optimist has convinced my inner pessimist that this means we are in for bumper crops and a bountiful summer. With better weather poking its head around the corner, we shall soon be back on the road—yippee! The clocks have made their death-defying leap forwards, Easter eggs now consumed...we can look forward to five bank holidays this year, as history is made with the Coronation of King Charles III. Moving us from the Elizabethan to the Carolean era. Community leaders across the land plan tea parties and slap-up dinners, while shops are full of Coronation paraphernalia, and the farmers of Exmoor are busy lambing and nurturing their livestock as they gallantly endeavour to feed our hungry nation.

With potential leak points and damp spots sealed, a complete aesthetic overhaul of the interior has made our van a cosy home from home, mostly due to the fact we have used up the oddments of paint from decorating the house. Warm orange and yellow give an Indian summer sunset glow, spiked with a hint of Spanish flag. Interestingly, Dulverton is twinned with the Basque country of Northern Spain, although their flag is criss-cross green on a red background. Florida Pepper crates give a southern American, east coast

ambiance. Relaxed but vibrant, a warm resonance welcoming in the good times ahead. Pictures of past and present pets accompany us on our journeys, keeping a watchful eye on proceedings.

The increased bustle about the town is tangible; certainly the pub is getting busy, with walkers replacing kayakers as the river slows and settles somewhat for the summer. Hungry visitors and locals quaff cheesy chips and pints of ale. The chip shop queue is getting longer as are the opening hours of our favourite cream tea spots. The Heritage Centre will soon be opening its doors once again, and the monthly farmers market will soon be up and running. Yes folks, the holiday season is upon us!

Mary Ford

Photo ©Mathew Ford



Spirebourne Limited

Liquid Waste Disposal and Drainage Co.

FREEPHONE 08000 855185

spirebourne@hotmail.co.uk
www.spirebourne.co.uk

EMERGENCY CALL OUTS

Septic Tank/Cess Pool Emptying - Any Size

Grease Traps

Drain Blockage Clearance

Various Commercial Liquid Waste Disposal

Servicing

CCTV Drainage Surveys

Pump Repairs & Renewals

Installation of Septic Tanks & Sewage Treatment Works

Mantair Units

THE LOCAL DIRECTORY

PARISH AND TOWN COUNCILS

Bampton T.C.: Clerk: Penny Clapham	clerk@bamptontowncouncil.gov.uk	.01647 253066
Brompton Regis P.C.: S Buchanan	brpcclerk@gmail.com	.01984 641706
Brushford P.C.: Clerk: Jan Aldridge	clerk@brushfordparishcouncil.org.uk	
Cutcombe P.C.: Clerk: Liz Stitt	cutcombeclerk@gmail.com	.07919 001801
Dulverton T.C.: Sec: Miss A. Rose	clerk@dulvertontowncouncil.co.uk	.01398 324561
East Anstey P.C.: Clerk: Mrs Jill Larcombe	eastansteypc@yahoo.co.uk	.01884 252647
Exford P.C.: Clerk: Jennifer Yates	clerk@exfordparishcouncil.org	.07919 001801
Exmoor P..C.: Clerk: Rebecca Tomalin	exmoorparishcouncil@gmail.com	.01643 831638
Exton P.C.: Clerk: Andrew Moore	clerk@extonparishcouncil.co.uk	.01984 641539
Oakford Parish Council: Chair: Mr Geoff Baylis	cllr.GBaylis.OakfordPC@gmail.com	.01398 351266
Upton P.C.: Clerk: Mrs P Purvis	uptonparishclerk@hotmail.co.uk	.01398 371548
Winsford P.C.: Clerk: Jennifer Yates	winsfordparishcouncil@gmail.com	
Withypool & Hawkridge P.C.: Clerk: Rebecca Tomalin	withypoolhawkridgeparishclerk@gmail.com	.01643 831638
Wiveliscombe T.C.: Clerk: Sarah Towells	townclerk@wiveliscombe.com	.01984 631914

LOCAL CHURCHES AND CHAPEL CONTACT NUMBERS

All Saints Church, Dulverton: Revd Dowell Conning	revdconning@gmail.com	.01398 322867
All Saints Dulverton, Parish Office: 1 Church Walk, Dulverton, TA22 9ER	allsaintsdulverton@gmail.com	.01398 322867
Dulverton Benefice/All Saints/Community choirs: Gary Cooper		.07419 212354
All Saints Church, Dulverton, Bell Tower: Anne Markwick		.01398 323823
Brushford: Revd Dowell Conning	revdconning@gmail.com	.01398 322867
Exmoor Benefice: The Rev. David Weir, The Rectory, Exford, TA24 7LX		.01643 831330
Catholic Church: Priest: Father David		.01643 702201
Dulverton Congregational Church: Chapel Street: Mr David Perry		.01398 324059
The Traditional Anglican Church: Loxbeare, Priest Reverend Aird		.01769 581042
Exmoor Benefice Choir: Mrs B. Staples		.01643 851396
St Peter's Church Oakford: Rev'd Stephanie Gordon-Jeffs	office@exevalleymissioncommunity.org	.01884 250417

ARTS

The Arts Society Exmoor: Mrs Penny Pulver (Chair)	www.theartsocietyexmoor.oreg.uk	.01398 331007
Dulverton Art Group: Sec: Mrs G Rose, 2 Stable Mews, The Square, Witheridge		.01884 860495
Dulverton Camera Club: Sec: Peter Main, 4 Valley View, Morebath, Tiverton, EX16		.01398 331556
Dulverton Players: Chair: Les Silverlock		.01398 341850
Oakford Players, Chair: Mr Tony Holmes	tholmes556@btinternet.com	.01398 351665

SPORTS CLUBS

Anstey Short Mat Bowls: Chris Dale		.01398 341615
Bridgetown Cricket: Sec: Mr. D. Sherring, Mid-Wicket, Bridgetown, Dulverton TA22 9JN	administrator@bridgetowncc.co.uk	
Brushford Short Mat Bowling: Sec: Sam Takle		.01398 324147
Cutcombe Cricket: Sec: Peter Thompson	cutcombecricketclub@gmail.com	
Dulverton Angling Assn: c/o Pat Veale, 9 High St., Dulverton, TA22 9HB		.01398 323409
Dulverton Badminton Club: Sec Judy Smith		.01398 324353
Dulverton Cricket Club: Carl Hooper	dulvertoncricketclub1858@gmail.com	07866 256769/01398 324494
Dulverton Cricket Club, Colts: Mrs Christine Dubery		.01398 323474
Dulverton & District Tennis Club: Hazel Richardson	hazelr@btinternet.com	.07889793571
Dulverton & Exmoor Squash Club: Membership Sec: Chris Winter	chriswin@aol.com	.07710 046107

Dulverton Jnr. F.C: Sec: Mrs Christine Dubery01398 323474
Dulverton Netball Club: Sec: Mrs Kate Atkins dulvertonnetballclub@gmail.com07966 676305
Dulverton Snooker: Sec: Mr. D. Bodger, 39 Fishers Mead, Dulverton, TA22 9EN01398 323899
Dulverton Sports and Social: Chair: Carl Hooper01398 324494
Dulverton Sportsfield Management: Adrian Smith01398 323834
Dulverton Senior Table Tennis: Richard Archer01398 324160
Dulverton Town F.C: Sec: Mr. J. Atkins, 1 Exebridge, Dulverton. TA22 9AY01398 323787
Exmoor Croquet Club: Chair: Connie Heywood01398 341556
Moorland Hall Sports: info@wheddoncross.org.uk	
Wimbleball Fly Fishers: enquiries@fishingthewest.co.uk	
PRE-SCHOOL GROUPS		
All Saints School & Nursery:01398 323231 & 01398 323223
Anstey Parent and Toddlers Group: Anstey Village Hall07823770168
Bampton School Nursery: School Close, Bampton EX16 9NW01398 331121
Little Owls Nursery at All Saints C of E School, Dulverton01398 324360
SCHOOLS		
All Saints C of E School: Fishers Mead TA22 9EN01398 323231
Bampton CE Primary School: School Close, Bampton EX16 9NW01398 331121
Bampton School Nursery: School Close, Bampton EX16 9NW01398 331121
Brompton Regis Toddlers: Mrs.E. Luxton07766 703566
Cutcombe C of E First School: Wheddon Cross, TA24 7DZ01643 841462
Dulverton Junior School: Barns Close West, TA22 9EE01398 323223
Dulverton Children's Centre: All Saints School, Fishers Mead TA22 9EN01398 324360
Dulverton Family and Toddlers Group:01398 324329
Dunkery PreSchool: Supervisor: Mrs. S. Matravers, Shute Close, Cutcombe, Minehead01643 841008
East Anstey Primary School: East Anstey, Tiverton, Devon, EX16 9JP01398 341369
Exford CofE VC First School:01643 831365
Little Berries Pre School at Exford First School01643 831365
Little Owls Nursery: All Saints School, Fishers Mead TA22 9EN01398 324360
WOMEN'S ORGANISATIONS		
Anstey W.I.: Karen01398 341106
Bampton Ladies Group. Mrs. Diane Holland01398 332755
Bampton Patchwork and Quilting Group. Mrs. Diane Holland01398 332755
Cutcombe & District M.U.: President, Pam Anson01643 851616
Cutcombe & District W.I.: Mrs. Pam Anson01643 851616
Exford Moorhens: Chairman: Mrs. I. Collett01643 831016
Oakford Moorland Ladies Club: Chair: Mrs Jennie Chappell smilerjenniec@hotmail.com01398 351666
YOUTH ORGANISATIONS AND ACTIVITIES		
Bampton Scouts/Cubs/Beaver748s: Tony Weiss01398 331901
Dulverton & District Young People's Project: Chair: John Preston01398 323862
Dulverton Ballet: Mrs Wightmore, Flat 3, Easter House, St. Andrews St. Tiverton01884 253999
Exmoor Community Youth Club: Organiser Laura Tasker, Fridays 6 – 8 pm1643 831125
OTHERS		
Abbeyfield House01398 324136
Bampton Heritage and Visitor Centre (inside St Michael and All Angels Church, Bampton) www.bamptonheritage.org.uk or bamptonheritage@btinternet.com	
Bampton Library and Resource Centre, Station Road01398 332466

If you see something that needs changing in the directory – please do let us know.

Email exmoornews@gmail.com



Brushford Parish Hall: Bookings enquiries@brushfordparishhall.org.uk	07941 139846
Brushford Luncheon Club: Treasurer: Margaret Alberly	01398 324587
Care Direct for help and advice: www.somerset.gov.uk	0300 1232224
Cutcombe Flower & Produce Show: Tracy Beviss	01643 841257
Dulverton Action Group: Magdalena Harding	01398 323 785
Dulverton & Southern Exmoor Twinning: Chair: Steve Ford, Dulverton	01398 323016
Dulverton Bridge Club: Sec. Brian Hughes	www.Bridgewebs.com/dulverton 01398 331219
Dulverton Dance:	01398 341850
Dulverton Ballroom Dance: Sec: Mrs Christine Dubery	01398 323474
Dulverton Development Forum: Sec: Mrs J. Ross	01398 323818
Dulverton Films: Jan Ross	01398 323818
Dulverton Fellowship for Mental Health: Marion Silverlock	01398 341850
Dulverton Gardening Club: Roger Hammond	01398 323954
Dulverton Heritage Centre: Kathy Currie	07493 518350
Dulverton Vets	01398 323285
Dulverton Vintage Films: Magdalena Harding	01398 323785
Dulverton Voluntary Drivers: Mike Beale	07743 885115
Exe Valley Market Bus: Jennie Chappell	smilerjenniec@hotmail.com 01398 351666
Exmoor Patient Group: Chair: Sandra Wilson, W Nightcott, Dulverton TA22 9RT	01398 324687
Exmoor BeeKeepers Association: Sec: Caroline Ralph	exmoorhoneyshow@gmail.com 01984 656240
Exmoor Community Bus Assn:	07925 044 262
Exmoor National Park Centre	01398 323841
Exmoor Pony Centre: Ashwick, Dulverton, Somerset, TA22 9QE	01398 323093
Exmoor Pony Society: Sec: Mrs Jay Gee, Little Ash Farm Cottage, Ash Lane, Withypool, TA24 7RR	01643 851777
Exmoor Rotary Club: Humphrey Berridge (PRO), Station Hse, Luke St, Bampton.	01398 332324
Exmoor U3A: David Newth.	01398 324615
Good Neighbours:	07395 171409
Oakford Village Hall: Bookings: Mrs Dawn Williams	dawnwilliams1@gmail.com 01398 324035
Royal British Legion Dulverton: Peter Donnelly	01398 323030
TA22 Voluntary Lift Scheme (formerly Brushford Voluntary Lifts): Chair: Bart Middleton	07528 326880
Tiverton Model Aero Club: Sec: Mr. P Veale, 9 Higre flih St., Dulverton TA22 9HB	01398 323409
Village Agent Diane Weston	info@somersettrcc.org.uk 07563723884 or 01823 331222
Voices of Exmoor Amanda Taylor	01598 428005
West Somerset Advice Bureau:	01643 704624



Ele Davidson

Painter & Decorator
North Devon Area

07775 600298

eledav1@btinternet.com



painterdecoratorcommissions



We welcome your community information. You can be added to our contributors' email list asking for copy (we send a reminder email prior to deadlines). Just email us to be added.
exmoornews@gmail.com

JANE PENFOLD

Equine Bodywork
The Masterson Method®
Massage
Myofascial Release
Saddle Fitting Advice



www.flexiblehorse.co.uk
07711 130371
jane@flexiblehorse.co.uk



All types
of work
undertaken

Maintaining the building heritage of Exmoor



EXMOOR BUILDERS

CONSTRUCTION + DESIGN

t 01398 324 669

m 07831 252 276

e info@exmoorbuilders.co.uk

w www.exmoorbuilders.co.uk

O M Hines Ltd

Office: 01984 623424
info@omhines.co.uk

Oil Tank Specialist

- ✓ Fuel Recovery
- ✓ Emergency Pump Outs
- ✓ Tank Installations
- ✓ Filter, Firevalves
- ✓ Water Removal
- ✓ Tank Cleaning
- ✓ Tank Suppliers
- ✓ Base / Stand Builders
- ✓ Tank Removal
- ✓ TI/33D Risk Assessments
- ✓ Oil Line Installations
- ✓ Temporary Tanks



Diesel Tanks
More Info Online



www.omhines.co.uk

Unit 19-20 Station Road, Wiveliscombe TA4 2LX

Lance Nicholson Country Pursuits



9 High Street, Dulverton
01398 323409

Shotguns, rifles,
ammunition, clays etc.
All your game fishing needs
plus details of the
Dulverton Angling Association.
Large range of Barbour clothing.

www.lance-nicholson.co.uk



Tel: 01884 257808

- **NEW BUILDS**
- **EXTENSIONS**
- **RENOVATIONS**
- **LOFT CONVERSIONS**

Jimsam View, Canal Hill, Tiverton, Devon EX16 4JE

Tel: 01884 257808

Mobile: 07977 993526

Email: nick6692@sky.com

